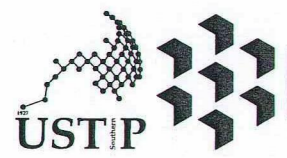


PERSPECTIVES
SCALE: N.D.T.S.

TABLE OF CONTENTS:

<p>ARCHITECTURAL</p> <p>G1-SITE DEVELOPMENT PLAN, VICINITY MAP, LOCATION PLAN A1-PERSPECTIVES A2-FLOOR PLAN ON SITE A3-GROUND FLOOR PLAN, SECOND FLOOR PLAN A4-THIRD FLOOR PLAN, FOURTH FLOOR PLAN A5-FIFTH FLOOR PLAN, ROOF DECK, ROOF PLAN A6-FRONT ELEVATION, LEFT SIDE ELEVATION A7-REAR ELEVATION, RIGHT SIDE ELEVATION A8-SECTION THRU-A, SECTION THRU-B A9-GROUND AND SECOND WALL FINISHES, DRYWALL DETAIL A10-THIRD AND FOURTH WALL FINISHES A11-FIFTH AND ROOF DECK WALL FINISHES GROUND FLOOR FINISHES A12-SECOND AND THIRD FLOOR FINISHES A13-FOURTH, FIFTH AND ROOF DECK FLOOR FINISHES A14-GROUND AND SECOND RCP A15-THIRD AND FOURTH RCP A16-FIFTH AND ROOF DECK RCP MAIN STAIR DETAIL TYPICAL STAIR NOSING DETAIL MAIN STAIR RAILING DETAIL A17-FIRE EXIT STAIR SECTION DETAIL TYPICAL STAIR NOSING DETAIL FIRE EXIT RAILING DETAIL PWD RAMP DETAIL A18-RAILING AND LATTICE DETAILS A19-VENT GRILLE DETAIL DROP LIGHT DETAIL TYPICAL PLANTER BOX DETAIL ELANTER BOX DETAIL-2 THRESHOLD DETAIL ROOF DECK ROOF PLAN ROOF DECK ROOF SECTION DETAIL A20-GUTTER AND ELEVATOR DETAILS A21-TOILET DETAILS A22-SCHEDULE OF DOORS AND WINDOWS A23-SCHEDULE OF WINDOWS A24-SCHEDULE OF WINDOWS A25-SCHEDULE OF WINDOWS, OFFICE SINK DETAIL A26-AVR DETAILS</p> <p>STRUCTURAL</p> <p>S1-GENERAL NOTES SUSPENDED SLABS S2-MAT FOOTING TOP REINFORCEMENT MAT FOOTING BOTTOM REINFORCEMENT FOUNDATION DETAILS MAIN STAIR DETAILS S3-MAT FOOTING LAYOUT MAT FOOTING ISOMETRIC LAYOUT SHEER WALL DETAILS S4-ELEVATOR REINFORCEMENT DETAILS LINTEL AND STIFFENER BEAM DETAILS WALL FOOTING DETAILS SCHEDULE OF COLUMNS FIRE EXIT STAIRCASE DETAILS S5-BEAM LAYOUT TEAM BEAM DETAILS S6-2F BEAM LAYOUT 2F BEAM SCHEDULE 2F TYPICAL SLAB REINFORCEMENT DETAILS S7-3F BEAM LAYOUT 3F BEAM SCHEDULE 3F TYPICAL SLAB REINFORCEMENT DETAILS S8-4F BEAM LAYOUT 4F BEAM SCHEDULE 4F TYPICAL SLAB REINFORCEMENT DETAILS S9-5F BEAM LAYOUT 5F BEAM SCHEDULE 5F TYPICAL SLAB REINFORCEMENT DETAILS S10-ROOF DECK BEAM LAYOUT ROOF DECK BEAM SCHEDULE ROOF DECK TYPICAL SLAB REINFORCEMENT DETAILS S11-ROOF FRAME PLAN, TRUSS 1 DETAILS, TRUSS 2 DETAILS GIRT 1 DETAILS, C-PURLIN DETAILS, COLUMN TO TRUSS CONNECTION, CONCRETE GUTTER DETAILS S12-AVR SUPPORT STRUCTURE, ENTRANCE CANOPY FRAMING PLAN, TRUSS DETAILS, STRUCTURAL CONNECTION DETAILS, STEEL STAIR DETAILS</p> <p>ELECTRICAL</p> <p>E1-GROUND FLOOR PLAN (LIGHTING AND SWITCHING LAYOUT) SECOND FLOOR PLAN (LIGHTING AND SWITCHING LAYOUT) E2-THIRD FLOOR PLAN (LIGHTING AND SWITCHING LAYOUT) FOURTH FLOOR PLAN (LIGHTING AND SWITCHING LAYOUT) E3-FIFTH FLOOR PLAN (LIGHTING AND SWITCHING LAYOUT) ROOF DECK PLAN GROUND FLOOR PLAN (POWER LAYOUT) E4-SECOND FLOOR PLAN (POWER LAYOUT) THIRD FLOOR PLAN (POWER LAYOUT) E5-FOURTH FLOOR PLAN (POWER LAYOUT) FIFTH FLOOR PLAN (POWER LAYOUT) E6-GROUND & SECOND FLOOR EMERGENCY LIGHTING LAYOUT E7-THIRD & FOURTH FLOOR EMERGENCY LIGHTING LAYOUT E8-FIFTH FLOOR & ROOF DECK EMERGENCY LIGHTING LAYOUT E9-SINGLE LINE DIAGRAM, LEGEND AND SYMBOLS E10-TYPICAL GROUND ROD DETAIL TYPICAL C.O. AND TELEPHONE, DATA OUTLETS MOUNTING DETAILS SERVICE PEDESTAL DETAIL VICINITY MAP</p> <p>MECHANICAL</p> <p>M1-GROUND FLOOR-MECHANICAL LAYOUT PLAN SECOND FLOOR-MECHANICAL LAYOUT PLAN M2-THIRD FLOOR-MECHANICAL LAYOUT PLAN FOURTH FLOOR-MECHANICAL LAYOUT PLAN M3-FIFTH FLOOR PLAN-MECHANICAL LAYOUT PLAN M4-ACCU MOUNTING DETAIL REFRIGERANT PIPE HANGER DETAIL REFRIGERANT PIPE INSULATION DETAIL TYPICAL SPLIT-TYPE CONNECTION DETAIL REFRIGERANT PIPE THRU WALL DETAIL VICINITY MAP M5-EQUIPMENT SCHEDULES WALL MOUNTED EXHAUST FAN DETAIL CENTRIFUGAL IN-LINE FAN DETAIL ACU-SUSPENDED TYPE DETAIL PROPELLER FAN WALL MOUNTED DETAIL VENT CAP DETAIL</p> <p>FIRE PROTECTION</p> <p>FP1-FIRE PROTECTION LAYOUT GROUND FLOOR FP2-FIRE PROTECTION LAYOUT SECOND FLOOR FP3-FIRE PROTECTION LAYOUT THIRD FLOOR FP4-FIRE PROTECTION LAYOUT FOURTH FLOOR FP5-FIRE PROTECTION LAYOUT FIFTH FLOOR FP6-FIRE PROTECTION LAYOUT ROOF DECK AND ROOF PLAN FP4-SWAY BRACING DETAIL SIAMESE TWIN ROOF OUTLET DETAIL WATER FLOW SWITCH DETAIL FLUSHING CONNECTION DETAIL SUPERVISORY FLOOR CONTROL VALVE ASSEMBLY AND VALVE HOSE DETAIL FLOW MEASURING DEVICE DETAIL ALARM CHECK VALVE ASSEMBLY (WET TYPE) ALARM MOTOR GONG DETAIL FP5-FIRE STORAGE TANK DETAIL VICINITY MAP & LOCATION PLAN PUMP TEST CONNECTION DETAIL AFSS FIRE DEPT. INLET DETAIL 10 lbs. (4.5kg) PPE PE-36 PORTABLE FIRE EXTINGUISHER FTV/ITC DL CONNECTION TO CATCH BASIN FIRE HOSE CABINET DETAIL FP6-PIPE HANGER DETAIL SPRINKLER HEADS DETAIL DPSS FIRE DEPT. INLET DETAIL FIRE HOSE VALVE DETAIL PADLE FLANGE DETAIL</p>	<p>LOCATION PLAN</p> <p>OUTLET IN SERIES WITH GCFI TYPICAL WIRING CONNECTION DETAIL TYPICAL GROUNDING CONNECTION DETAILS E11-DESIGN ANALYSIS, GENERATOR & TRANSFORMER SIZING E12-20- SCHEDULE OF LOADS E21-VOLTAGE DROP ANALYSIS E22-SHORT CIRCUIT ANALYSIS</p> <p>SANITARY</p> <p>P1-GROUND FLOOR-WASTE LINE LAYOUT SECOND FLOOR-WASTE LINE LAYOUT P2-THIRD & FOURTH FLOOR-WASTE LINE LAYOUT FIFTH FLOOR & ROOF DECK-WASTE LINE LAYOUT P3-GROUND FLOOR-WATER LINE LAYOUT SECOND FLOOR-WATER LINE LAYOUT THIRD FLOOR & FOURTH FLOOR - WATER LINE LAYOUT P4-FIFTH FLOOR & ROOF DECK-WATER LINE LAYOUT GROUND FLOOR-STORM DRAIN LAYOUT P5-SECOND FLOOR-STORM DRAIN LAYOUT THIRD & FOURTH FLOOR-STORM DRAIN LAYOUT FIFTH FLOOR-STORM DRAIN LAYOUT P6-ROOF DECK-STORM LINE LAYOUT ROOF PLAN-STORM LINE LAYOUT P7-ISOMETRIC VIEW-SOIL & WASTE PIPING LAYOUT P8-ISOMETRIC VIEW-WATER LINE LAYOUT P9-ISOMETRIC VIEW-STORM DRAIN P10-BLOWUP ISOMETRIC DETAILS P11- WATER SUPPLY SINGLE LINE DIAGRAM GREASE TRAP DETAIL, SPOT DETAIL "X" METAL MANHOLE COVER DETAIL CATCH BASIN DETAILS GREASE TRAP DETAILS PORTABLE GREASE TRAP CONNECTION P12-VICINITY MAP LOCATION PLAN WATER CISTERN DETAILS AIR VENT DETAILS LADDER RUNG DETAILS P13-SEPTIC VAULT DETAILS: FLOOR PLAN, LONGITUDINAL SECTION DETAIL CROSS SECTION DETAIL MANHOLE BLOW-UP DETAIL P14-TOILET INSTALLATIONS & CONNECTION DETAILS P15-ACU DRAIN GROUND AND SECOND FLOOR PLAN P16-ACU DRAIN THIRD AND FOURTH FLOOR PLAN P17-ACU DRAIN FIFTH FLOOR PLAN</p> <p>ELECTRONICS</p> <p>AUX1-GROUND FLOOR - ECE LAYOUT PLAN SECOND FLOOR - ECE LAYOUT PLAN AUX2-TYPICAL FLOOR - ECE LAYOUT PLAN THIRD FLOOR & FOURTH FLOOR FIFTH FLOOR - ECE LAYOUT PLAN AUX3-VICINITY MAP LOCATION PLAN CCTV SYSTEM RISER DIAGRAM FIRE ALARM SYSTEM RISER DIAGRAM AUX4-TELEPHONE AND INTERNET RISER DIAGRAM</p>
--	--

REPUBLIC OF THE PHILIPPINES INSPECTOR GENERAL OF CONSTRUCTION PIPE SLEEVE DETAIL
LINE AND GRADE
GEODETIC
ARCHITECTURAL
CIVIL
STRUCTURAL
ELECTRICAL
MECHANICAL
ELECTRONICS
PLUMBING/SANITARY
FIRE



REPUBLIC OF THE PHILIPPINES
UNIVERSITY OF SCIENCE AND TECHNOLOGY OF SOUTHERN PHILIPPINES
CAGAYAN DE ORO CAMPUS
INFRASTRUCTURE PLANNING AND FACILITY DEVELOPMENT UNIT
CLARO M. RECTO AVENUE, LAPASAN, CAGAYAN DE ORO CITY 9000
TELEPHONE # (08822) 72-60-65 / (088) 856-1738 / 856-1739 / TELE FAX (088) 856-4696
WEBSITE: www.ustp.edu.ph

FERDINAND A. DUMPA
ARCHITECT OF RECORD
PRC NO. 029328 PIR NO. 6589271
DATE 02-10-2026
TIN 185-092-837 PLACE CAGAYAN DE ORO

PROPOSED CONSTRUCTION OF SMART ACADEMIC BUILDING PHASE 1, JASAAN CAMPUS
LOCATION: USTP JASAAN CAMPUS, MISAMIS ORIENTAL
OWNER: UNIVERSITY OF SCIENCE AND TECHNOLOGY OF SOUTHERN PHILIPPINES

RECOMMENDING APPROVAL:
ENGR. GRACE C. BABA
DIRECTOR, INFRASTRUCTURE PLANNING & FACILITIES DEVELOPMENT OFFICE

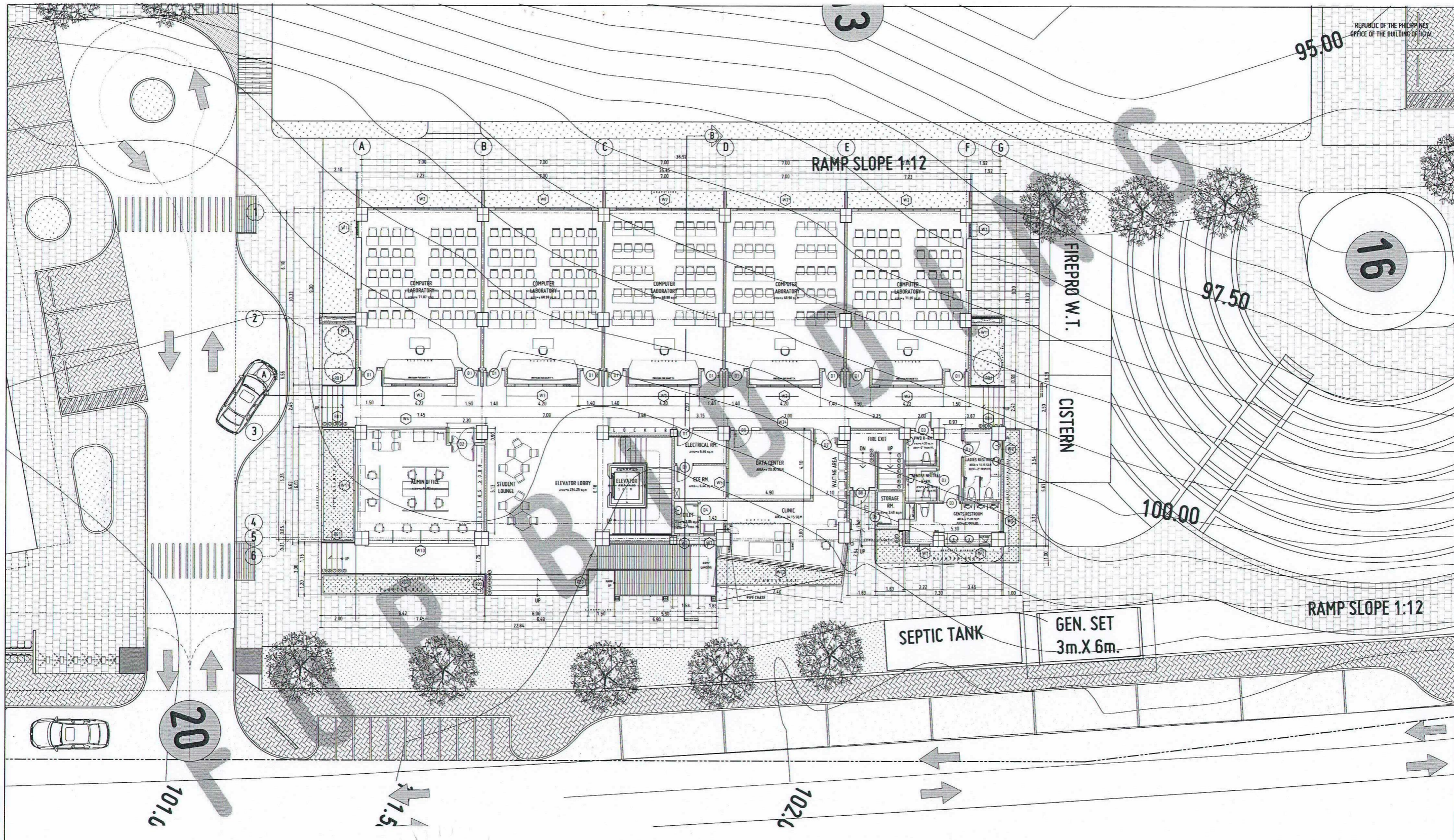
RECOMMENDING APPROVAL:
ATTY. ERWIN B. BUCHO
VP FOR ADMINISTRATION & LEGAL AFFAIRS

APPROVED BY:
DR. AMBROSIO B. CULTURA II
PRESIDENT, USTP SYSTEM

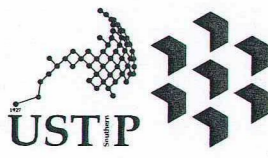
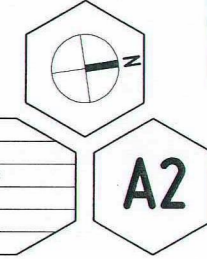
SHEET CONTENTS:
PERSPECTIVES
TABLE OF CONTENTS

DRAWN BY:
DATE DRAWN:
10.01.2025
FNT:

A1



SITE DEVELOPMENT PLAN
SCALE: 1:100 MTS



REPUBLIC OF THE PHILIPPINES
UNIVERSITY OF SCIENCE AND TECHNOLOGY OF SOUTHERN PHILIPPINES
CAGAYAN DE ORO CAMPUS
INFRASTRUCTURE PLANNING AND FACILITY DEVELOPMENT UNIT
CLARO M. RECTO AVENUE, LAPASAN, CAGAYAN DE ORO CITY 9000
TELEPHONE # (08822) 72-60-65 / (088) 856-1738 / 856-1739 | TELE FAX (088) 856-4696
WEBSITE: www.ustp.edu.ph

FERDINAND A. DUMPA
ARCHITECT OF RECORD
PRC NO. 013329 PPR NO. 6589271
DATE 02-10-2026
TIN 185-092-837 PLACE CAGAYAN DE ORO

PROJECT: PROPOSED CONSTRUCTION OF SMART ACADEMIC BUILDING
PHASE 1, JASAAN CAMPUS
LOCATION: USTP JASAAN CAMPUS, MISAMIS ORIENTAL
OWNER: UNIVERSITY OF SCIENCE AND TECHNOLOGY OF SOUTHERN PHILIPPINES

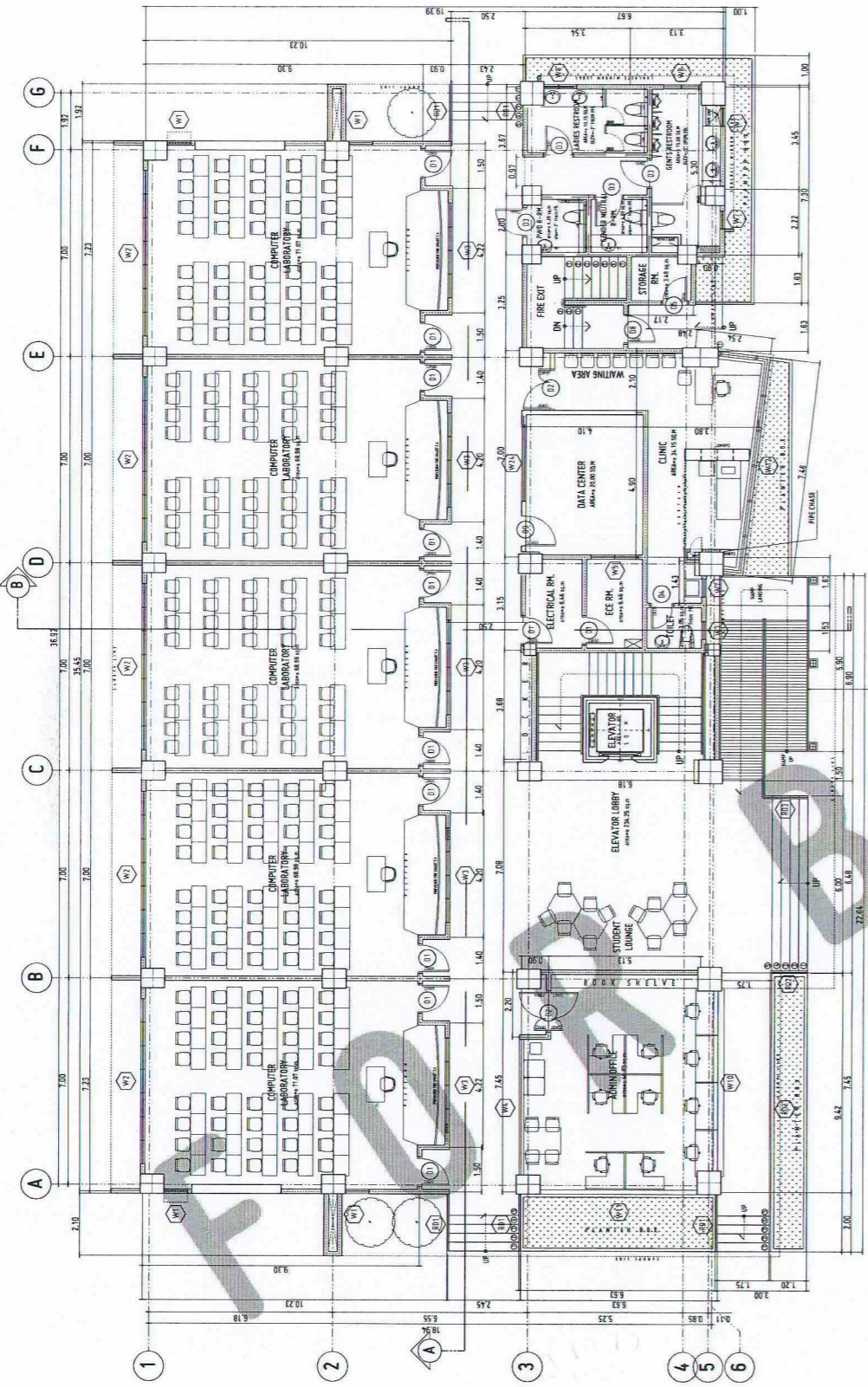
RECOMMENDING APPROVAL:
[Signature]
ENGR. GRACE C. BABA
DIRECTOR, INFRASTRUCTURE PLANNING & FACILITIES DEVELOPMENT OFFICE

RECOMMENDING APPROVAL:
[Signature]
ATTY. ERWIN B. BUCIO
VP FOR ADMINISTRATION & LEGAL AFFAIRS

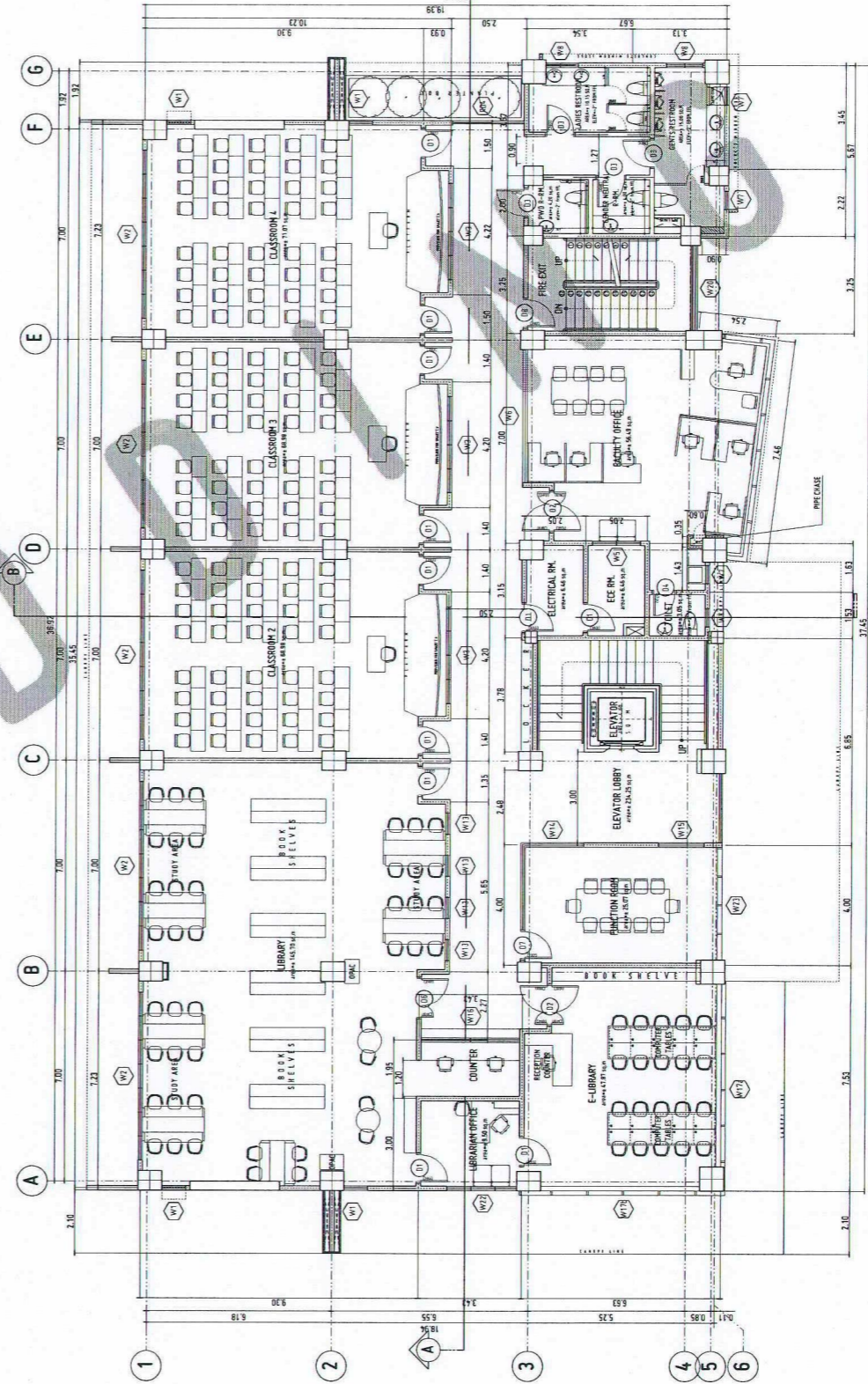
APPROVED BY:
[Signature]
DR. AMBROSIO B. CULTURA II
PRESIDENT, USTP SYSTEM

SHEET CONTENTS:
FLOOR PLAN ON SITE

DRAWN BY:
DATE DRAWN:
10.01.2025
FNT:

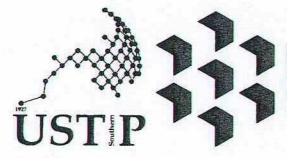


GROUND FLOOR PLAN
SCALE: 1:100 MTS



SECOND FLOOR PLAN
SCALE: 1:100 MTS

- GENERAL NOTES:**
1. FFL - FINISH FLOOR LINE. VERIFY FLOOR FINISHES/MATERIALS.
 2. ALL INTERIOR PARTITIONS AND FURNITURE LAYOUT ARE INDICATIVE ONLY AND MAY CHANGE. VERIFY INTERIOR DESIGN DRAWINGS.
 3. ALL LANDSCAPE ARCHITECTURE ELEMENTS ARE INDICATIVE ONLY AND MAY CHANGE. VERIFY LANDSCAPE ARCHITECTURE DRAWINGS.
 4. DO NOT SCALE DRAWINGS. WRITTEN DIMENSIONS TO GOVERN.
 5. IN CASE OF DISCREPANCY IN THE FIGURES AND DRAWINGS THE MATTER SHALL BE SUBMITTED IMMEDIATELY TO THE ARCHITECT BEFORE ADJUSTMENTS ARE TO BE MADE.
 6. VERIFY ACTUAL TECHNICAL SITE CONDITIONS.
 7. VERIFY ACTUAL ELEVATION MARKS AND LOT BOUNDARIES PRIOR TO COMMENCING WORK.
 8. ALL WORKS HEREIN SHALL BE DONE UNDER THE STRICT SUPERVISION OF DULY LICENSED AND EXPERIENCED ARCHITECT/ENGINEER.
 9. SET AND BUILDING BOUNDARIES SHOULD BE SUPPORTED BY RETAINING WALLS AND FENCES. VERIFY EXISTING HEIGHTS, ELEVATIONS AND OTHER SITE CONDITIONS.
 10. THE GENERAL CONTRACTOR, SUB-CONTRACTORS INCLUDING SPECIALTY CONTRACTORS, SHALL SUBMIT PROPER SHOP DRAWINGS INCLUDING MATERIALS SAMPLE PRIOR TO INSTALLATION FOR ARCHITECTS APPROVAL.
- IMPORTANT NOTES:**
1. CHECK AND VERIFY ACTUAL SITE CONDITION BEFORE CONSTRUCTION. CHECK AND REVIEW PLANS, AND IF THERE ARE CONFLICTS BETWEEN DRAWINGS, BIDDING AND TECHNICAL SPECIFICATIONS, INFORM THE IPDRO THRU RFI, BEFORE PROCUREMENT AND INSTALLATION OF CERTAIN ITEMS AND MATERIALS.
 2. BEFORE INSTALLATION OF MATERIALS, ESPECIALLY ARCHITECTURAL FINISHES OR MATERIALS THAT WILL GREATLY AFFECT THE CONSTRUCTION, INFORM THE IPDRO THRU RFI (FOR INFORMATION) AND RFI FOR MATERIAL APPROVAL BEFORE PROCUREMENT AND INSTALLATION OF CERTAIN ITEMS AND MATERIALS.
 3. FOR ANY CONFLICT BETWEEN ARCHITECTURAL PLANS AND OTHER UTILITIES, INFORM THE IPDRO DESIGN ARCHITECT AND/OR ENGINEERS TO RESOLVE DESIGN ISSUE.



REPUBLIC OF THE PHILIPPINES
UNIVERSITY OF SCIENCE AND TECHNOLOGY OF SOUTHERN PHILIPPINES
CAGAYAN DE ORO CAMPUS
INFRASTRUCTURE PLANNING AND FACILITY DEVELOPMENT UNIT
CLARO M. RECTO AVENUE, LAPASAN, CAGAYAN DE ORO CITY 9000
TELEPHONE # (08822) 72-60-65 / (088) 856-1736 / 856-1739 | TELE FAX (088) 856-4696
WEBSITE: www.ustp.edu.ph

FERDINAND A. DUMPA
ARCHITECT OF RECORD
PRC NO. 013329 PFR NO. 6589271
DATE 02-10-2026
PLACE CAGAYAN DE ORO
TIN 185-092-837

**PROPOSED CONSTRUCTION OF SMART ACADEMIC BUILDING
PHASE 1, JASAAN CAMPUS**
LOCATION
USTP JASAAN CAMPUS, MISAMIS ORIENTAL
OWNER
UNIVERSITY OF SCIENCE AND TECHNOLOGY OF SOUTHERN PHILIPPINES

RECOMMENDING APPROVAL:
[Signature]
ENGR. GRACE C. BABA
DIRECTOR, INFRASTRUCTURE PLANNING & FACILITIES DEVELOPMENT OFFICE

RECOMMENDING APPROVAL:
[Signature]
ATTY. ERWIN B. BUCIO
VP FOR ADMINISTRATION & LEGAL AFFAIRS

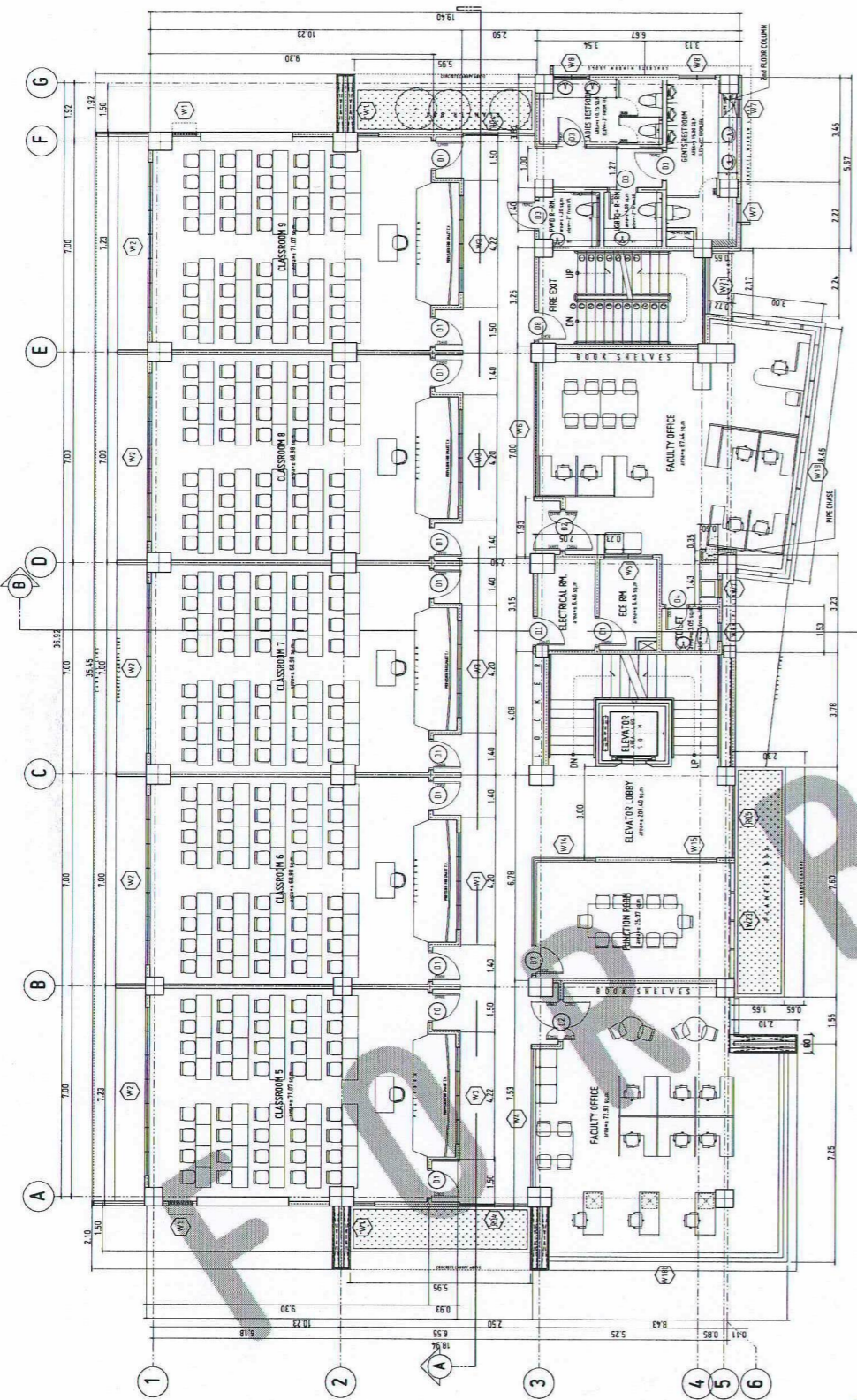
APPROVED BY:
[Signature]
DR. AMBROSIO B. CULTURA II
PRESIDENT, USTP SYSTEM

SHEET CONTENTS:
GROUND FLOOR PLAN
SECOND FLOOR PLAN

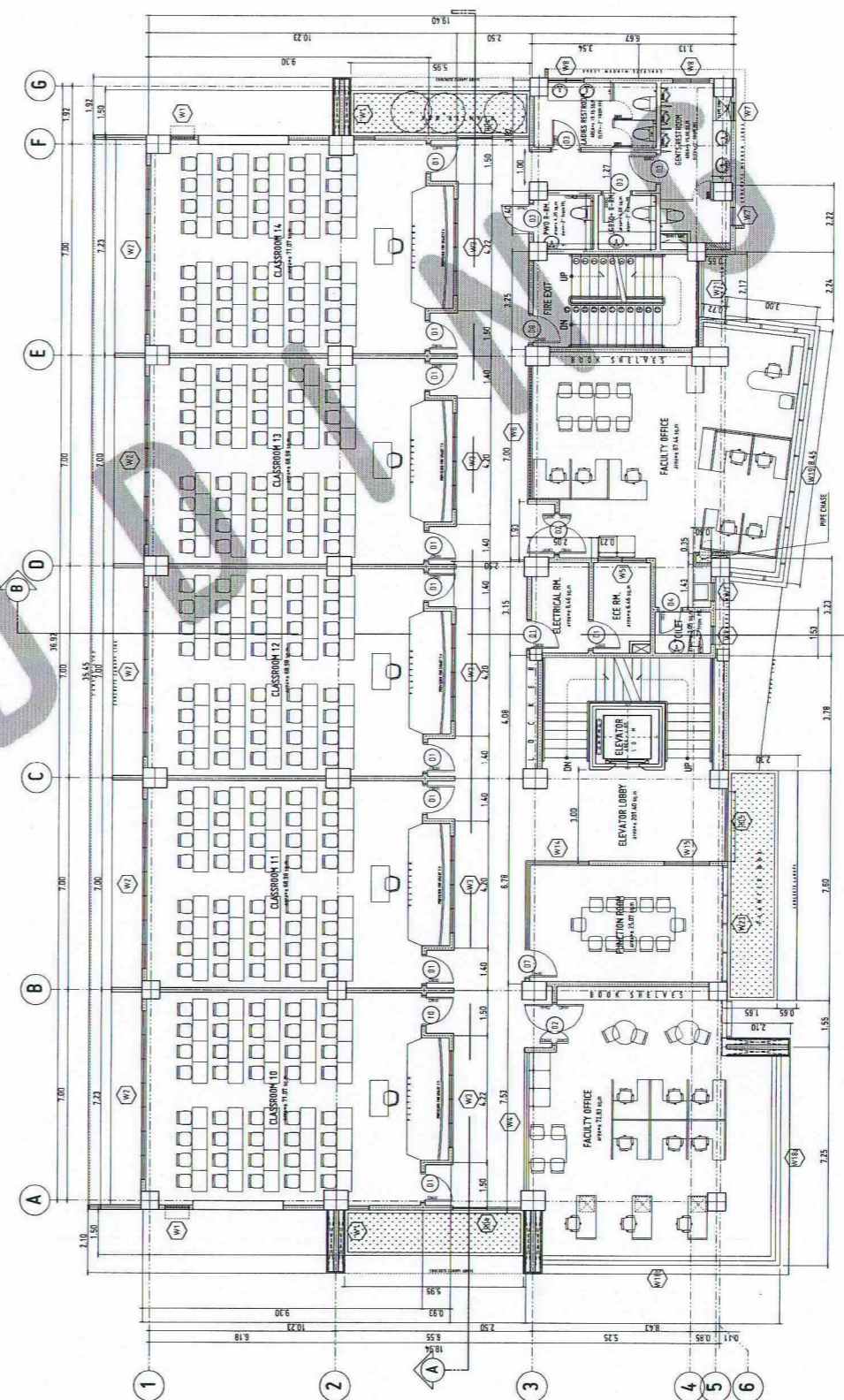
DRAWN BY:
DATE DRAWN:
10.01.2025
FNT:



A3



THIRD FLOOR PLAN
SCALE: 1:100 MTS



FOURTH FLOOR PLAN
SCALE: 1:100 MTS



- GENERAL NOTES:
1. FF = FINISH FLOOR LINE. VERIFY FLOOR FINISHES/MATERIALS.
 2. ALL INTERIOR PARTITIONS AND FURNITURE LAYOUT ARE INDICATIVE ONLY AND MAY CHANGE. VERIFY INTERIOR DESIGN DRAWINGS.
 3. ALL LANDSCAPE ARCHITECTURE ELEMENTS ARE INDICATIVE ONLY AND MAY CHANGE. VERIFY LANDSCAPE ARCHITECTURE DRAWINGS.
 4. DO NOT SCALE DRAWINGS. WRITTEN DIMENSIONS TO GOVERN.
 5. IN CASE OF DISCREPANCY IN THE FIGURES AND DRAWINGS THE MATTER SHALL BE SUBMITTED IMMEDIATELY TO THE ARCHITECT BEFORE ADJUSTMENTS ARE TO BE MADE.
 6. VERIFY ACTUAL TECHNICAL SITE CONDITIONS.
 7. VERIFY ACTUAL ELEVATION MARKS AND LOT BOUNDARIES PRIOR TO COMMENCING WORK.
 8. ALL WORKS HEREIN SHALL BE DONE UNDER THE STRICT SUPERVISION OF DULY LICENSED AND EXPERIENCED ARCHITECT/ENGINEER.
 9. LOT AND BUILDING BOUNDARIES SHOULD BE SUPPORTED BY RETAINING WALLS AND FENCES. VERIFY EXISTING HEIGHTS, ELEVATIONS AND OTHER SITE CONDITIONS.
 10. THE GENERAL CONTRACTOR, SUB-CONTRACTORS INCLUDING SPECIALTY CONTRACTORS, SHALL SUBMIT PROPER SHOP DRAWINGS INCLUDING MATERIALS SAMPLE PRIOR TO INSTALLATIONS FOR ARCHITECT'S APPROVAL.

- IMPORTANT NOTES:
1. CHECK AND VERIFY ACTUAL SITE CONDITION BEFORE CONSTRUCTION.
 2. CHECK AND REVIEW PLANS, AND IF THERE ARE CONFLICTS BETWEEN DRAWINGS, BIDDING, AND TECHNICAL SPECIFICATIONS, NOTIFY THE UPDU THRU RFI BEFORE PROCUREMENT AND INSTALLATION OF CERTAIN ITEMS AND MATERIALS.
 3. BEFORE INSTALLATION OF MATERIALS, ESPECIALLY ARCHITECTURAL FINISHES OR MATERIALS THAT WILL GREATLY AFFECT THE CONSTRUCTION, NOTIFY THE UPDU THRU RFI FOR INFORMATION AND RFA FOR MATERIAL APPROVAL BEFORE PROCUREMENT AND INSTALLATION OF CERTAIN ITEMS AND MATERIALS.
 4. FOR ANY CONFLICT BETWEEN ARCHITECTURAL PLANS AND OTHER UTILITIES, NOTIFY THE UPDU DESIGN ARCHITECT AND/OR ENGINEERS TO RESOLVE DESIGN ISSUE.



REPUBLIC OF THE PHILIPPINES
UNIVERSITY OF SCIENCE AND TECHNOLOGY OF SOUTHERN PHILIPPINES
CAGAYAN DE ORO CAMPUS
INFRASTRUCTURE PLANNING AND FACILITY DEVELOPMENT UNIT
CLARO M. RECTO AVENUE, LAPASAN, CAGAYAN DE ORO CITY 9000
TELEPHONE # (08222) 72-60-65 / (088) 856-1736 / 856-1739 | TELE FAX (088) 856-4696
WEBSITE: www.ustp.edu.ph

Ferdinand A. Dumpa
ARCHITECT OF RECORD
PRC NO. DI 2376 PTR NO. 6569271
DATE 02-10-2026
TIN 185-092-837 PLACE CAGAYAN DE ORO

**PROPOSED CONSTRUCTION OF SMART ACADEMIC BUILDING
PHASE 1, JASAAN CAMPUS**
LOCATION: USTP JASAAN CAMPUS, MISAMIS ORIENTAL
OWNER: UNIVERSITY OF SCIENCE AND TECHNOLOGY OF SOUTHERN PHILIPPINES

RECOMMENDING APPROVAL:
ENGR. GRACE C. BABA
DIRECTOR, INFRASTRUCTURE PLANNING & FACILITIES DEVELOPMENT OFFICE

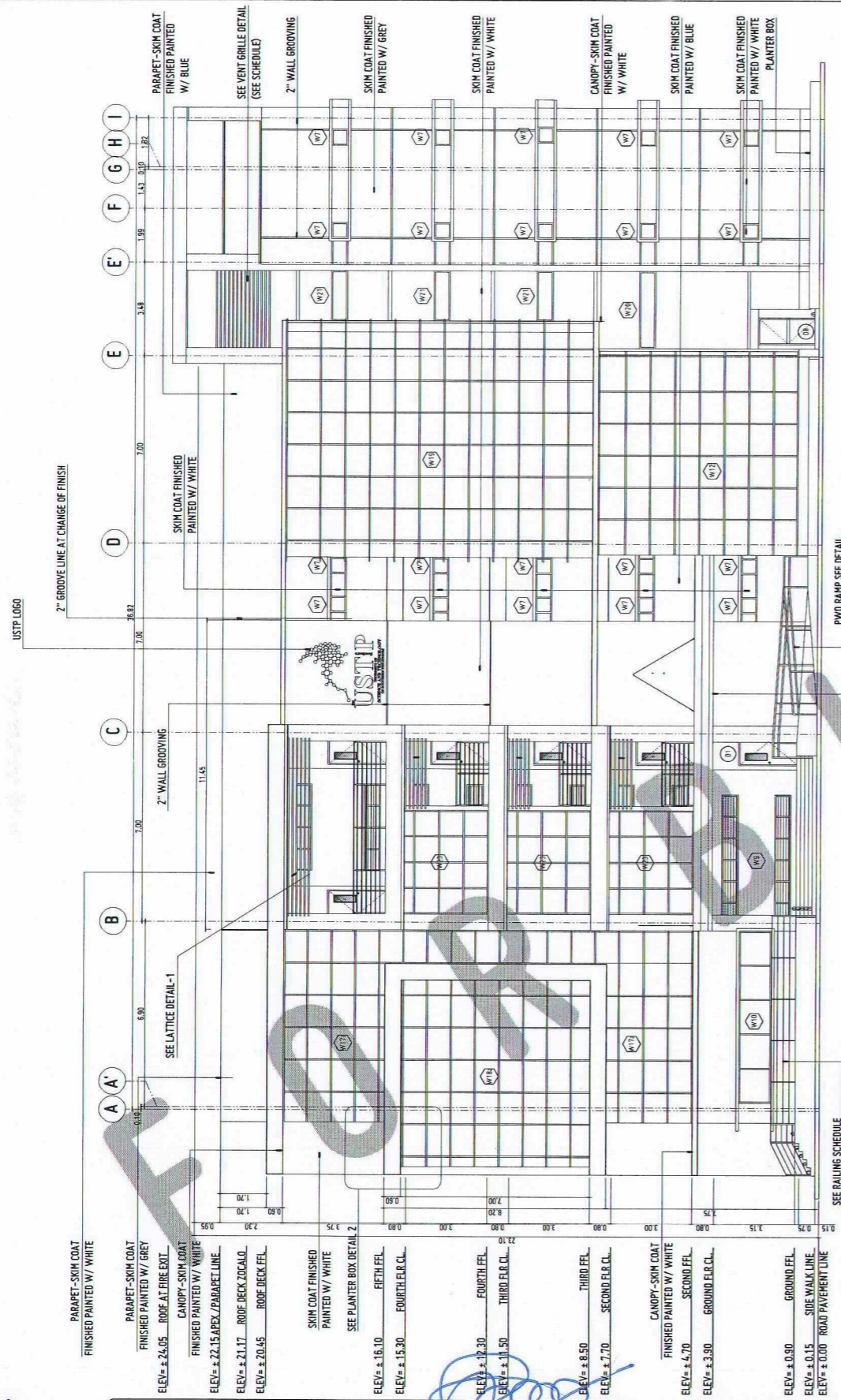
RECOMMENDING APPROVAL:
ATTY. ERWIN B. BUCKO
VP FOR ADMINISTRATION & LEGAL AFFAIRS

APPROVED BY:
DR. AMBROSIO B. CULTURA II
PRESIDENT, USTP SYSTEM

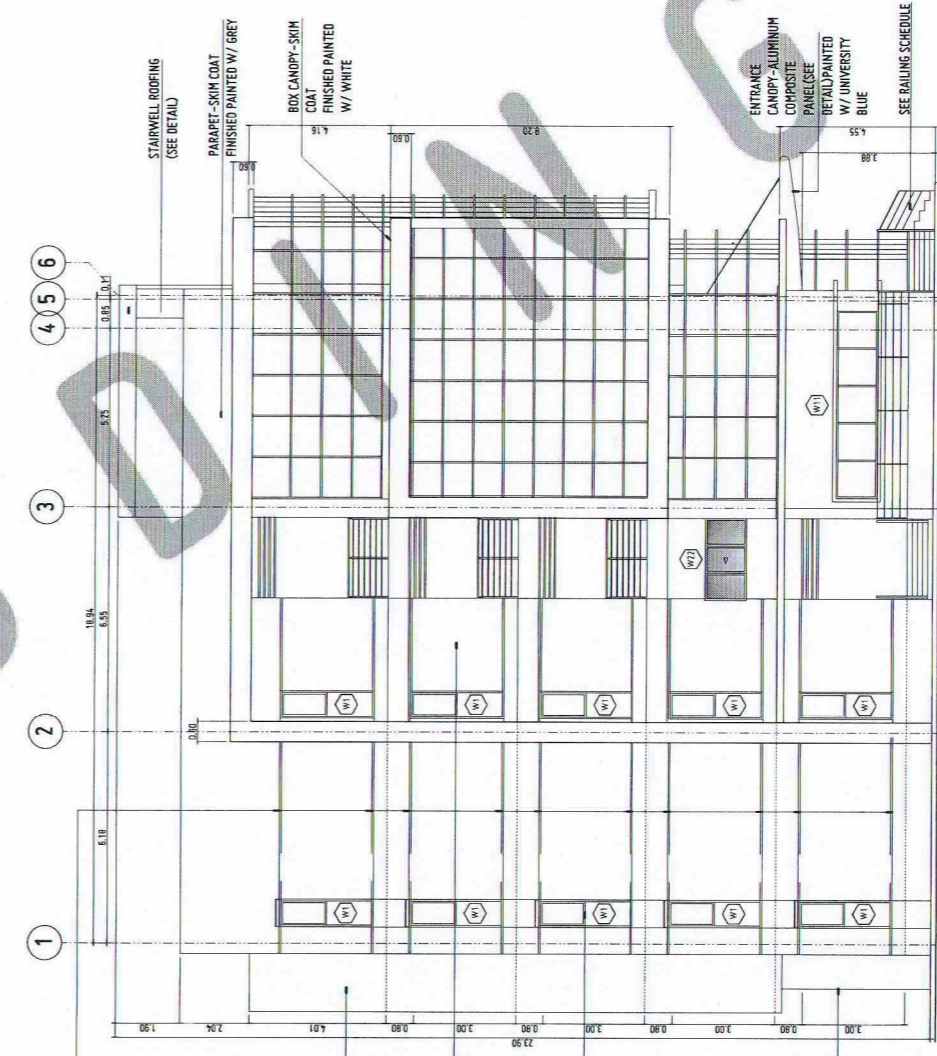
SHEET CONTENTS:
THIRD FLOOR PLAN
FOURTH FLOOR PLAN

DRAWN BY:
DATE DRAWN:
10.01.2025
FNT:

A4



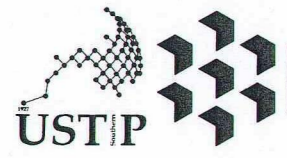
FRONT ELEVATION
SCALE: 1:100 MTS



LEFT SIDE ELEVATION
SCALE: 1:100 MTS

- GENERAL NOTES:
1. FFL = FINISH FLOOR LINE. VERIFY FLOOR FINISHES/MATERIALS.
 2. ALL INTERIOR PARTITIONS AND FURNITURE LAYOUT ARE INDICATIVE ONLY AND MAY CHANGE. VERIFY INTERIOR DESIGN DRAWINGS.
 3. ALL LANDSCAPE ARCHITECTURE ELEMENTS ARE INDICATIVE ONLY AND MAY CHANGE. VERIFY LANDSCAPE ARCHITECTURE DRAWINGS.
 4. DO NOT SCALE DRAWINGS. WRITTEN DIMENSIONS TO GOVERN.
 5. IN CASE OF DISCREPANCY IN THE FIGURES AND DRAWINGS THE MATTER SHALL BE SUBMITTED IMMEDIATELY TO THE ARCHITECT BEFORE ADJUSTMENTS ARE TO BE MADE.
 6. VERIFY ACTUAL TECHNICAL SITE CONDITIONS.
 7. VERIFY ACTUAL ELEVATION MARKS AND LOT BOUNDARIES PRIOR TO COMMENCING WORK.
 8. ALL WORKS HEREIN SHALL BE DONE UNDER THE STRICT SUPERVISION OF BUILT LICENSED AND EXPERIENCED ARCHITECT/ENGINEER.
 9. LOT AND BUILDING BOUNDARIES SHOULD BE SUPPORTED BY RETAINING WALLS AND FENCES. VERIFY EXISTING HEIGHTS, ELEVATIONS AND OTHER SITE CONDITIONS.
 10. THE GENERAL CONTRACTOR, SUB-CONTRACTORS INCLUDING SPECIALTY CONTRACTORS, SHALL SUBMIT PROPER SHOP DRAWINGS INCLUDING MATERIALS SAMPLE PRIOR TO INSTALLATIONS FOR ARCHITECT'S APPROVAL.

- IMPORTANT NOTES:
1. CHECK AND VERIFY ACTUAL SITE CONDITION BEFORE CONSTRUCTION.
 2. CHECK AND REVIEW PLANS, AND IF THERE ARE CONFLICTS BETWEEN DRAWINGS, BIDDING AND TECHNICAL SPECIFICATIONS, NOTIFY THE UPSTU THRU RFI BEFORE PROCUREMENT AND INSTALLATION OF CERTAIN ITEMS AND MATERIALS.
 3. BEFORE INSTALLATION OF MATERIALS, ESPECIALLY ARCHITECTURAL FINISHES OR MATERIALS THAT WILL GREATLY AFFECT THE CONSTRUCTION, NOTIFY THE UPSTU THRU RFI (FOR INFORMATION) AND RFI FOR MATERIAL APPROVAL BEFORE PROCUREMENT AND INSTALLATION OF CERTAIN ITEMS AND MATERIALS.
 4. FOR ANY CONFLICT BETWEEN ARCHITECTURAL PLANS AND OTHER UTILITIES, NOTIFY THE UPSTU DESIGN ARCHITECT AND/OR ENGINEERS TO RESOLVE DESIGN ISSUE.



REPUBLIC OF THE PHILIPPINES
UNIVERSITY OF SCIENCE AND TECHNOLOGY OF SOUTHERN PHILIPPINES
CAGAYAN DE ORO CAMPUS
INFRASTRUCTURE PLANNING AND FACILITY DEVELOPMENT UNIT
CLARDO M. RECTO AVENUE, LAPASAN, CAGAYAN DE ORO CITY 9000
TELEPHONE # (08822) 72-80-85 / (088) 856-1736 / 856-1739 | TELE FAX (088) 856-4696
WEBSITE: www.ustp.edu.ph

FERDINAND A. DUMPA
ARCHITECT OF RECORD
PRC NO. 013329 PTR NO. 6599271
DATE 02-10-2026
PLACE CAGAYAN DE ORO

**PROPOSED CONSTRUCTION OF SMART ACADEMIC BUILDING
PHASE 1, JASAAN CAMPUS**
LOCATION: USTP JASAAN CAMPUS, MISAMIS ORIENTAL
OWNER: UNIVERSITY OF SCIENCE AND TECHNOLOGY OF SOUTHERN PHILIPPINES

RECOMMENDING APPROVAL:
ENGR. GRACE C. BABA
DIRECTOR, INFRASTRUCTURE PLANNING & FACILITIES DEVELOPMENT OFFICE

RECOMMENDING APPROVAL:
ATTY. ERWIN B. BUGIS
VP FOR ADMINISTRATION & LEGAL AFFAIRS

APPROVED BY:
DR. AMBROSIO B. CULTURA II
PRESIDENT, USTP SYSTEM

SHEET CONTENTS:
FRONT ELEVATION
LEFT SIDE ELEVATION

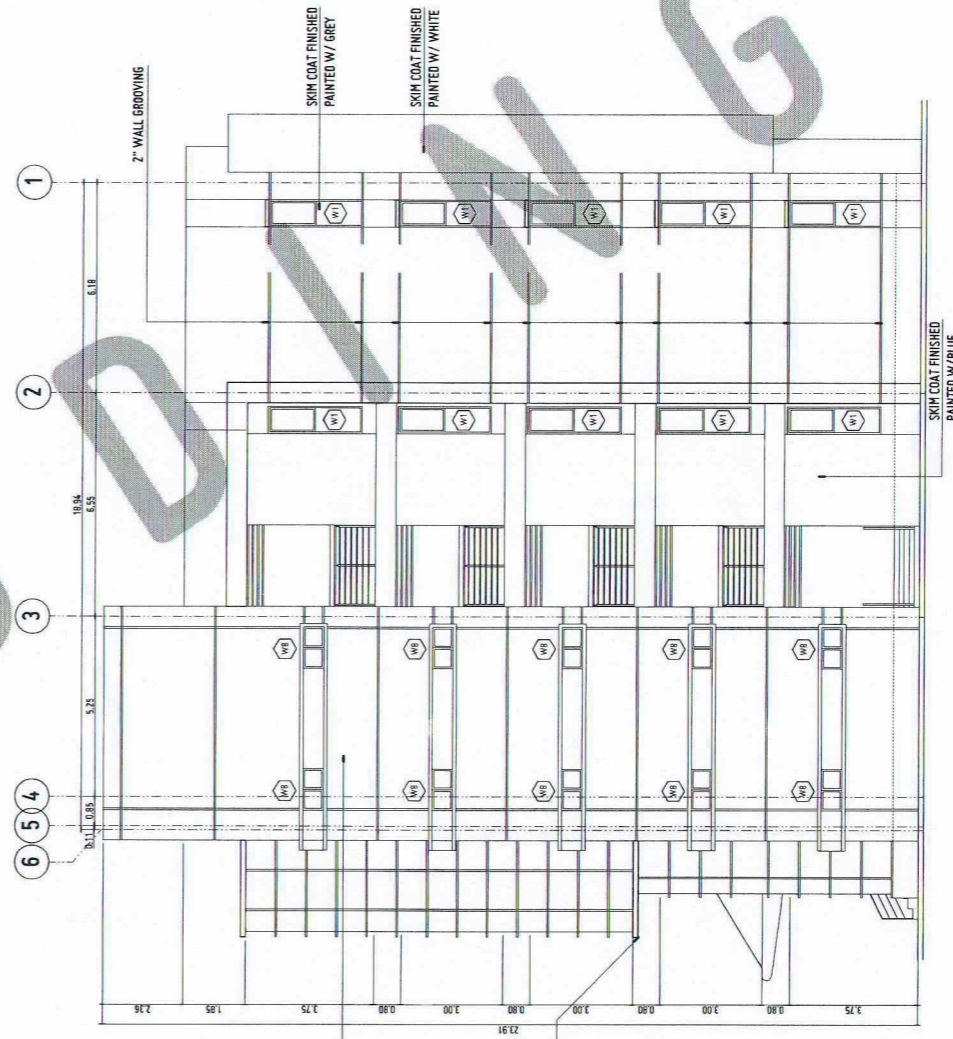
DRAWN BY:
DATE DRAWN:
10.01.2025
FNT:



A6



REAR ELEVATION
SCALE: 1:100 MTS

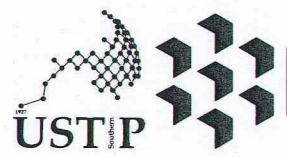


RIGHT SIDE ELEVATION
SCALE: 1:100 MTS

- GENERAL NOTES:
1. FFL = FINISH FLOOR LINE, VERIFY FLOOR FINISHES/MATERIALS.
 2. ALL INTERIOR PARTITIONS AND FURNITURE LAYOUT ARE INDICATIVE ONLY AND MAY CHANGE. VERIFY INTERIOR DESIGN DRAWINGS.
 3. ALL LANDSCAPE ARCHITECTURE ELEMENTS ARE INDICATIVE ONLY AND MAY CHANGE. VERIFY LANDSCAPE ARCHITECTURE DRAWINGS.
 4. DO NOT SCALE DRAWINGS. WRITTEN DIMENSIONS TO GOVERN.
 5. IN CASE OF DISCREPANCY IN THE FIGURES AND DRAWINGS THE MATTER SHALL BE SUBMITTED IMMEDIATELY TO THE ARCHITECT BEFORE ADJUSTMENTS ARE TO BE MADE.
 6. VERIFY ACTUAL TECHNICAL SITE CONDITIONS.
 7. VERIFY ACTUAL ELEVATION MARKS AND LOT BOUNDARIES PRIOR TO COMMENCING WORK.
 8. ALL WORKS HEREON SHALL BE DONE UNDER THE STREET SUPERVISION OF DULY LICENSED AND EXPERIENCED ARCHITECT/ENGINEER.
 9. LOT AND BUILDING BOUNDARIES SHOULD BE SUPPORTED BY RETAINING WALLS AND FENCES. VERIFY EXISTING HEIGHTS, ELEVATIONS AND OTHER SITE CONDITIONS.
 10. THE GENERAL CONTRACTOR, SUB-CONTRACTORS INCLUDING SPECIALTY CONTRACTORS, SHALL SUBMIT PROPER SHOP DRAWINGS INCLUDING MATERIALS SAMPLE PRIOR TO INSTALLATIONS FOR ARCHITECT'S APPROVAL.

- IMPORTANT NOTES:
1. CHECK AND VERIFY ACTUAL SITE CONDITION BEFORE CONSTRUCTION.
 2. CHECK AND REVIEW PLANS AND IF THERE ARE CONFLICTS BETWEEN DRAWINGS, BIDDING AND TECHNICAL SPECIFICATIONS, BEFORE THE IPFU THRU RFL BEFORE PROCUREMENT AND INSTALLATION OF CERTAIN ITEMS AND MATERIALS.
 3. BEFORE INSTALLATION OF MATERIALS, ESPECIALLY ARCHITECTURAL FINISHES OR MATERIALS THAT WILL GREATLY AFFECT THE CONSTRUCTION, INFORM THE IPFU THRU RFL (FOR INFORMATION) AND RFL FOR MATERIAL APPROVAL BEFORE PROCUREMENT AND INSTALLATION OF CERTAIN ITEMS AND MATERIALS.
 4. FOR ANY CONFLICT BETWEEN ARCHITECTURAL PLANS AND OTHER UTILITIES, INFORM THE IPFU DESIGN ARCHITECT AND/OR ENGINEERS TO RESOLVE DESIGN ISSUE.

- 2" WALL GROOVING
ELEV. ± 24.05 ROOF AT FIRE EXIT
- ELEV. ± 22.15 APEX / PARAPET LINE
- ELEV. ± 21.17 ROOF DECK ZOCALO
- ELEV. ± 20.45 ROOF DECK FFL
- SKIM COAT FINISHED PAINTED W/ GREY
ELEV. ± 16.10 FIFTH FFL
ELEV. ± 15.30 FOURTH F.F.L.C.L.
- FOURTH FFL
ELEV. ± 12.30
- THIRD F.F.L.C.L.
ELEV. ± 11.50
- BOX CANOPY-SKIM COAT FINISHED PAINTED W/ WHITE
ELEV. ± 8.50 THIRD FFL
ELEV. ± 7.70 SECOND F.F.L.C.L.
- ELEV. ± 6.70 SECOND FFL
ELEV. ± 3.90 GROUND F.F.L.C.L.
- GROUND FFL
ELEV. ± 0.90
- SIDE WALK LINE
ELEV. ± 0.15
- ROAD PAVEMENT LINE
ELEV. ± 0.00



REPUBLIC OF THE PHILIPPINES
UNIVERSITY OF SCIENCE AND TECHNOLOGY OF SOUTHERN PHILIPPINES
CAGAYAN DE ORO CAMPUS
INFRASTRUCTURE PLANNING AND FACILITY DEVELOPMENT UNIT
CLARO M. RETTO AVENUE, LAPASAN, CAGAYAN DE ORO CITY 9000
TELEPHONE # (08822) 72-60-65 / (088) 856-1738 / 856-1739 | TELE FAX (088) 856-4566
WEBSITE: www.ustp.edu.ph

FERDINAND A. DUMPA
ARCHITECT OF RECORD
PRC NO. 078279 PTR NO. 65892211
DATE 02-10-2026
TIN 185-092-837 PLACE CAGAYAN DE ORO

PROJECT
PROPOSED CONSTRUCTION OF SMART ACADEMIC BUILDING PHASE 1, JASAAN CAMPUS
LOCATION
USTP JASAAN CAMPUS, MISAMIS ORIENTAL
OWNER
UNIVERSITY OF SCIENCE AND TECHNOLOGY OF SOUTHERN PHILIPPINES

RECOMMENDING APPROVAL:
Grace C. Baba
ENGR. GRACE C. BABA
DIRECTOR, INFRASTRUCTURE PLANNING & FACILITIES DEVELOPMENT OFFICE

RECOMMENDING APPROVAL:
Erwin B. Bucio
ATTY. ERWIN B. BUCIO
VP FOR ADMINISTRATION & LEGAL AFFAIRS

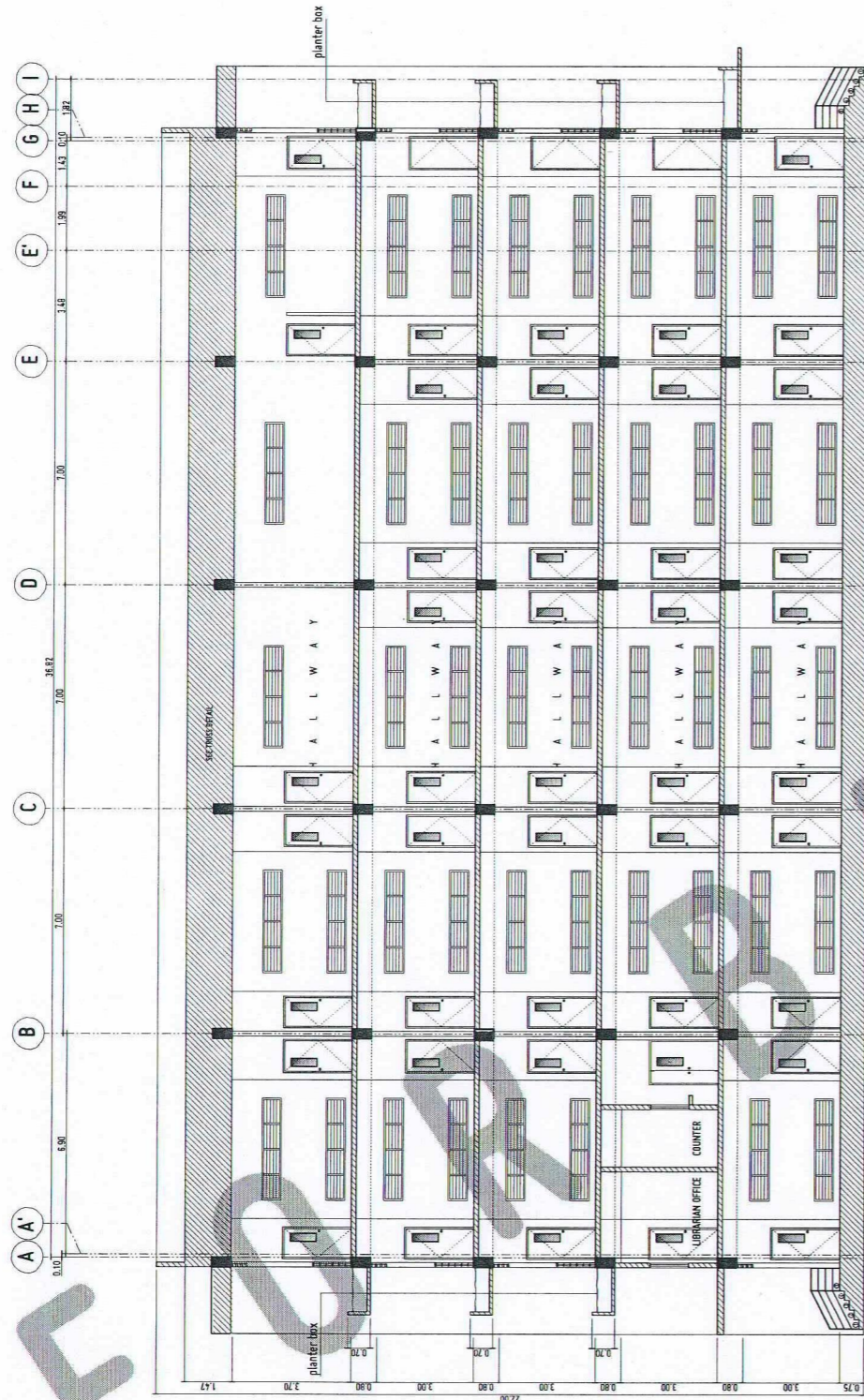
APPROVED BY:
Dr. Amprosio B. Cultura II
DR. AMPROSIO B. CULTURA II
PRESIDENT, USTP SYSTEM

SHEET CONTENTS:
REAR ELEVATION
RIGHT SIDE ELEVATION

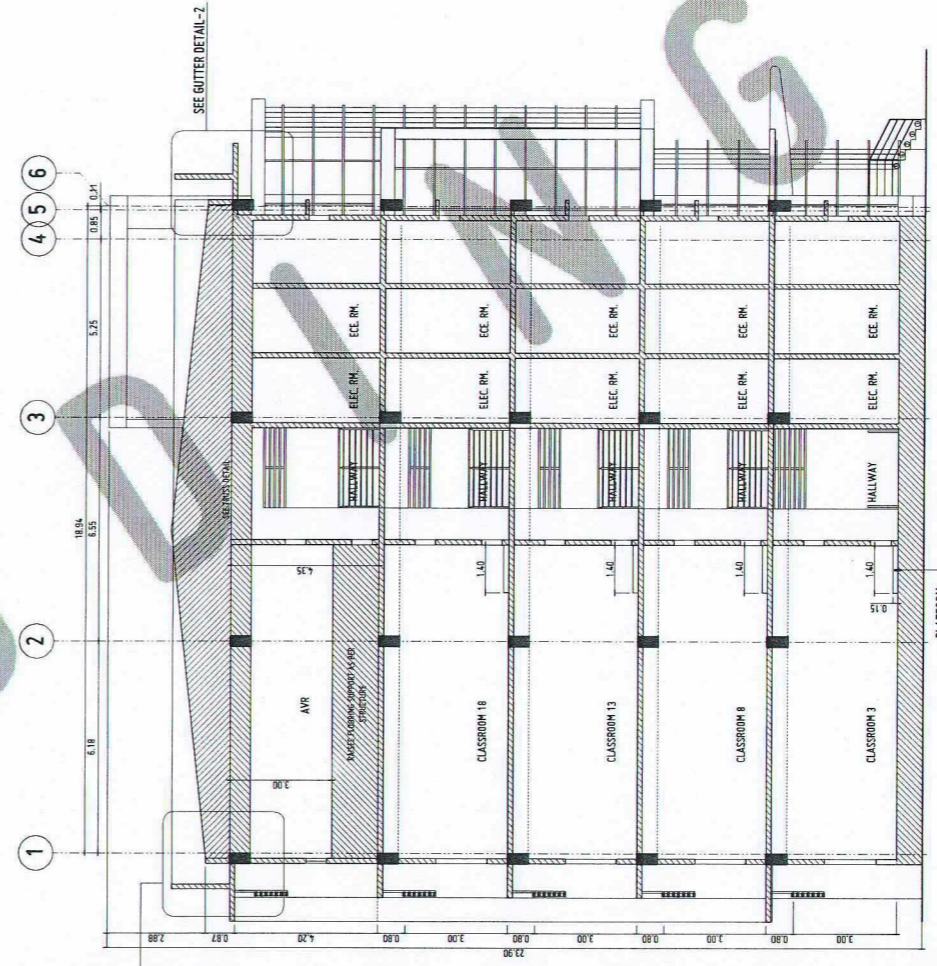
DRAWN BY:
DATE DRAWN:
10.01.2025
FNT:



A7



SECTION THRU-A
SCALE: 1:100 MTS



SECTION THRU-B
SCALE: 1:100 MTS

- GENERAL NOTES:
1. FEL = FINISH FLOOR LINE. VERIFY FLOOR FINISHES/MATERIALS.
 2. ALL INTERIOR PARTITIONS AND FURNITURE LAYOUT ARE INDICATIVE ONLY AND MAY CHANGE. VERIFY INTERIOR DESIGN DRAWINGS.
 3. ALL LANDSCAPE ARCHITECTURE ELEMENTS ARE INDICATIVE ONLY AND MAY CHANGE. VERIFY LANDSCAPE ARCHITECTURE DRAWINGS.
 4. DO NOT SCALE DRAWINGS. WRITTEN DIMENSIONS TO GOVERN.
 5. IN CASE OF DISCREPANCY IN THE FIGURES AND DRAWINGS THE MATTER SHALL BE SUBMITTED IMMEDIATELY TO THE ARCHITECT BEFORE ADJUSTMENTS ARE TO BE MADE.
 6. VERIFY ACTUAL TECHNICAL SITE CONDITIONS.
 7. VERIFY ACTUAL ELEVATION MARKS AND LOT BOUNDARIES PRIOR TO COMMENCING WORK.
 8. ALL WORKS HEREIN SHALL BE DONE UNDER THE STRICT SUPERVISION OF DULY LICENSED AND EXPERIENCED ARCHITECT/ENGINEER.
 9. LOT AND BUILDING BOUNDARIES SHOULD BE SUPPORTED BY RETAINING WALLS AND FENCES. VERIFY EXISTING HEIGHTS, ELEVATIONS AND OTHER SITE CONDITIONS.
 10. THE GENERAL CONTRACTOR, SUB-CONTRACTORS INCLUDING SPECIALTY CONTRACTORS, SHALL SUBMIT PROPER SHOP DRAWINGS INCLUDING MATERIALS SAMPLE PRIOR TO INSTALLATIONS FOR ARCHITECT'S APPROVAL.

- IMPORTANT NOTES:
1. CHECK AND VERIFY ACTUAL SITE CONDITION BEFORE CONSTRUCTION.
 2. CHECK AND REVIEW PLANS, AND IF THERE ARE CONFLICTS BETWEEN DRAWINGS, BIDDING, AND TECHNICAL SPECIFICATIONS, NOTIFY THE PSPU THRU RFL BEFORE PROCUREMENT AND INSTALLATION OF CERTAIN ITEMS AND MATERIALS.
 3. BEFORE INSTALLATION OF MATERIALS, ESPECIALLY ARCHITECTURAL FINISHES OR MATERIALS THAT WILL GREATLY AFFECT THE CONSTRUCTION, NOTIFY THE PSPU THRU RFL FOR INFORMATION AND RFL FOR MATERIAL APPROVAL BEFORE PROCUREMENT AND INSTALLATION OF CERTAIN ITEMS AND MATERIALS.
 4. FOR ANY CONFLICT BETWEEN ARCHITECTURAL PLANS AND OTHER UTILITIES, NOTIFY THE PSPU DESIGN ARCHITECT AND/OR ENGINEERS TO RESOLVE DESIGN ISSUE.

- ELEV. ± 24.05 ROOF AT FIRE EXIT.
- ELEV. ± 22.15 APPEX / PARAPET LINE.
- ELEV. ± 21.17 ROOF DECK ZOCALO.
- ELEV. ± 20.45 ROOF DECK FEL.
- ELEV. ± 16.10 FIFTH FEL.
- ELEV. ± 15.30 FOURTH FEL CL.
- ELEV. ± 11.30 FOURTH FEL.
- ELEV. ± 11.50 THIRD FEL CL.
- ELEV. ± 8.90 THIRD FEL.
- ELEV. ± 7.70 SECOND FEL CL.
- ELEV. ± 6.70 SECOND FEL.
- ELEV. ± 3.90 GROUND FEL CL.
- ELEV. ± 0.90 GROUND FEL.
- ELEV. ± 0.15 SIDE WALK LINE.
- ELEV. ± 0.00 ROAD PAVEMENT LINE.

- ELEV. ± 24.05 ROOF AT FIRE EXIT. SEE GUTTER DETAIL-1
- ELEV. ± 22.15 APPEX / PARAPET LINE.
- ELEV. ± 21.17 ROOF DECK ZOCALO.
- ELEV. ± 20.45 ROOF DECK FEL.
- ELEV. ± 16.10 FIFTH FEL.
- ELEV. ± 15.30 FOURTH FEL CL.
- ELEV. ± 12.20 FOURTH FEL.
- ELEV. ± 11.50 THIRD FEL CL.
- ELEV. ± 8.50 THIRD FEL.
- ELEV. ± 7.70 SECOND FEL CL.
- ELEV. ± 6.70 SECOND FEL.
- ELEV. ± 3.90 GROUND FEL CL.
- ELEV. ± 0.90 GROUND FEL.
- ELEV. ± 0.15 SIDE WALK LINE.
- ELEV. ± 0.00 ROAD PAVEMENT LINE.



REPUBLIC OF THE PHILIPPINES
UNIVERSITY OF SCIENCE AND TECHNOLOGY OF SOUTHERN PHILIPPINES
CAGAYAN DE ORO CAMPUS
INFRASTRUCTURE PLANNING AND FACILITY DEVELOPMENT UNIT
CLARO M. RECTO AVENUE, LAPASAN, CAGAYAN DE ORO CITY 9000
TELEPHONE # (08822) 72-68-65 / (088) 856-1738 / 856-1739 | TELE FAX (088) 856-4696
WEBSITE: www.ustp.edu.ph

FERDINAND A. DUMPA
ARCHITECT OF RECORD
PRC NO. 013329 PTR NO. 6509271
DATE 02-10-2026
TIN 185-092-837 PLACE CAGAYAN DE ORO

PROJECT PROPOSED CONSTRUCTION OF SMART ACADEMIC BUILDING PHASE 1, JASAAN CAMPUS
LOCATION USTP JASAAN CAMPUS, MISAMIS ORIENTAL
OWNER UNIVERSITY OF SCIENCE AND TECHNOLOGY OF SOUTHERN PHILIPPINES

RECOMMENDING APPROVAL:
ENGR. GRACE C. BABA
DIRECTOR, INFRASTRUCTURE PLANNING & FACILITIES DEVELOPMENT OFFICE

RECOMMENDING APPROVAL:
ATTY. ERWIN B. BUCTO
VP FOR ADMINISTRATION & LEGAL AFFAIRS

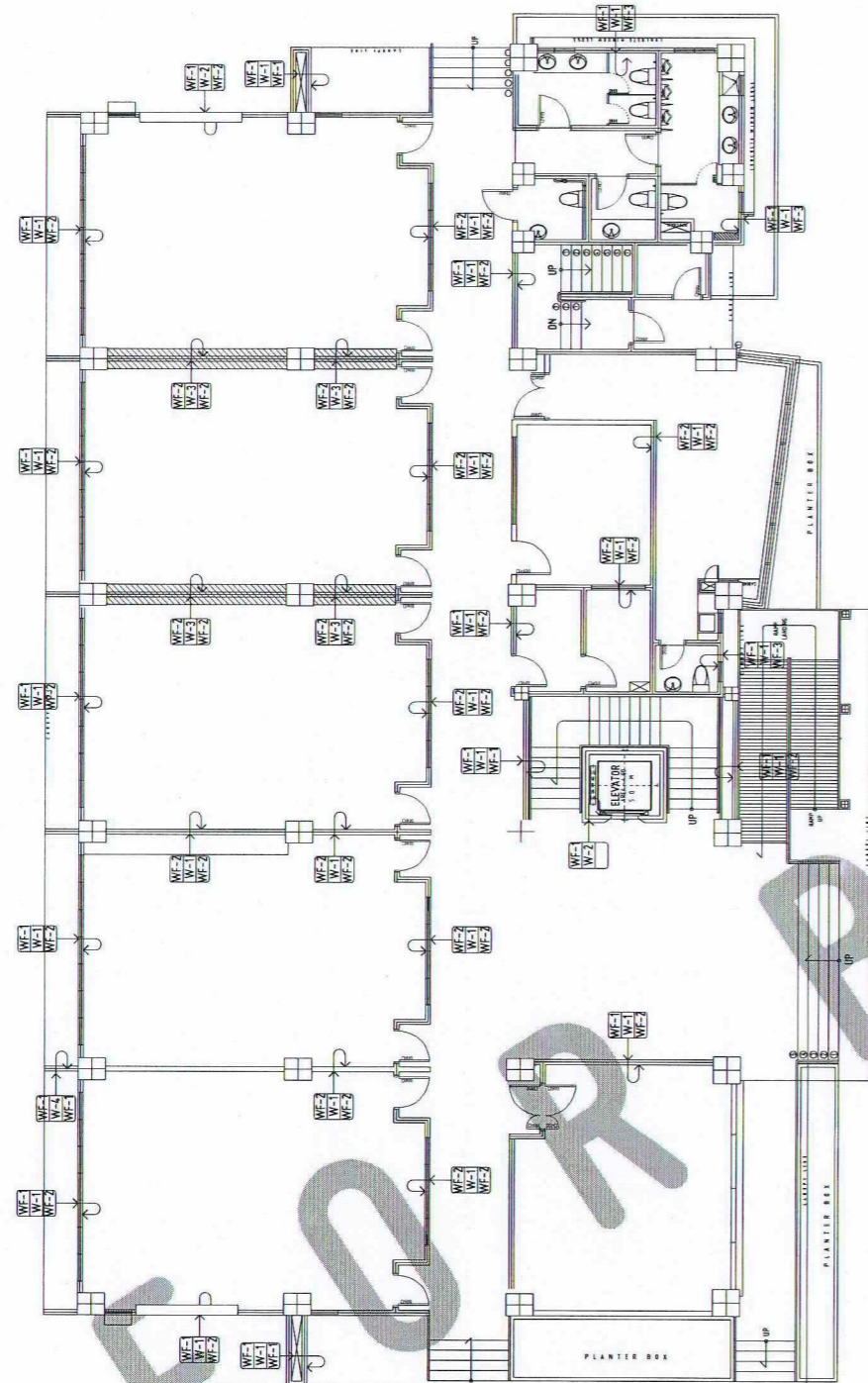
APPROVED BY:
DR. AMBROSIO B. CULTURA II
PRESIDENT, USTP SYSTEM

SHEET CONTENTS:
SECTION THRU-A
SECTION THRU-B

DRAWN BY:
DATE DRAWN:
10.01.2025
PNT:

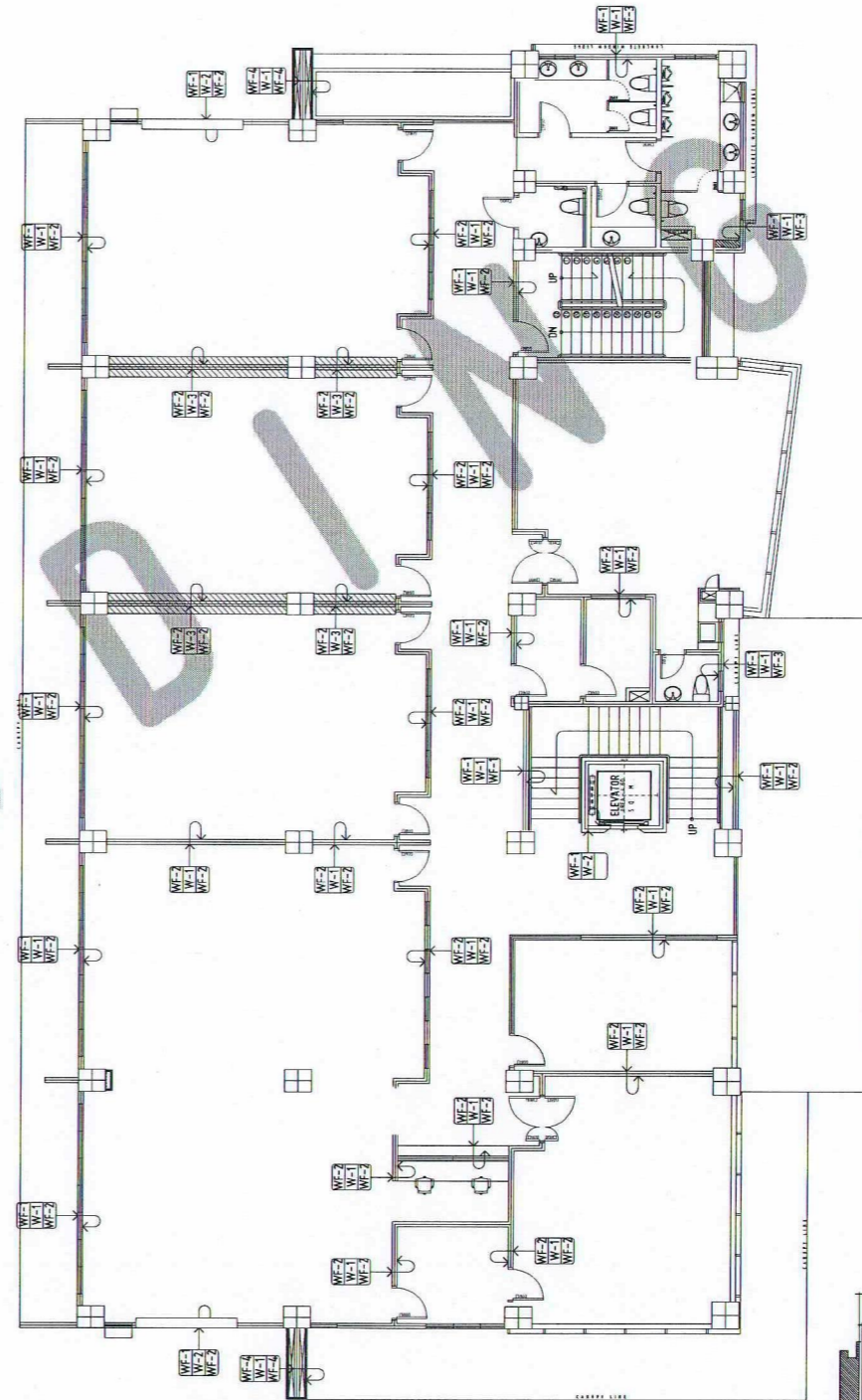


A8



GROUND FLOOR PLAN-WALL FINISHES
SCALE: 1:100 MTS

A 1 9



SECOND FLOOR PLAN-WALL FINISHES
SCALE: 1:100 MTS

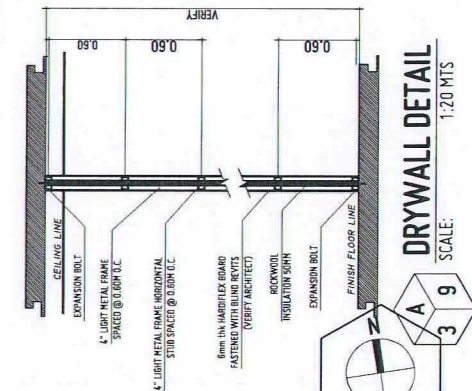
A 2 9

- GENERAL NOTES:
- WF-1 FINISH FLOOR LINE. VERIFY FLOOR FINISHES/MATERIALS.
 - ALL INTERIOR PARTITIONS AND FURNITURE LAYOUT ARE INDICATIVE ONLY AND MAY CHANGE. VERIFY INTERIOR DESIGN DRAWINGS.
 - ALL LANDSCAPE ARCHITECTURE ELEMENTS ARE INDICATIVE ONLY AND MAY CHANGE. VERIFY LANDSCAPE ARCHITECTURE DRAWINGS.
 - DO NOT SCALE DRAWINGS. WRITTEN DIMENSIONS TO GOVERN.
 - IN CASE OF DISCREPANCY IN THE FIGURES AND DRAWINGS THE MASTER SHALL BE SUBMITTED IMMEDIATELY TO THE ARCHITECT BEFORE ADJUSTMENTS ARE TO BE MADE.
 - VERIFY ACTUAL TECHNICAL SITE CONDITIONS.
 - VERIFY ACTUAL ELEVATION MARKS AND LOT BOUNDARIES PRIOR TO COMMENCING WORK.
 - ALL WORKS HEREIN SHALL BE DONE UNDER THE STRICT SUPERVISION OF DULY LICENSED AND EXPERIENCED ARCHITECT/ENGINEER.
 - LOT AND BUILDING BOUNDARIES SHOULD BE SUPPORTED BY RETAINING WALLS AND FENCES. VERIFY EXISTING HEIGHTS, ELEVATIONS AND OTHER SITE CONDITIONS.
 - THE GENERAL CONTRACTOR, SUB-CONTRACTORS INCLUDING SPECIALTY CONTRACTORS, SHALL SUBMIT PROPER SHOP DRAWINGS INCLUDING MATERIALS SAMPLE PRIOR TO INSTALLATIONS FOR ARCHITECT'S APPROVAL.

- IMPORTANT NOTES:
- CHECK AND VERIFY ACTUAL SITE CONDITION BEFORE CONSTRUCTION.
 - CHECK AND REVIEW PLANS, AND IF THERE ARE CONFLICTS BETWEEN DRAWINGS, BOB, BOB, AND TECHNICAL SPECIFICATIONS, INFORM THE PRD/ TRU RPT. BEFORE PROCEEDING AND INSTALLATION OF CERTAIN ITEMS AND MATERIALS.
 - BEFORE INSTALLATION OF MATERIALS, ESPECIALLY ARCHITECTURAL FINISHES OR MATERIALS THAT WILL GREATLY AFFECT THE CONSTRUCTION, INFORM THE PRD/ TRU RPT FOR INFORMATION AND RFA (FOR MATERIAL APPROVAL) BEFORE PROCUREMENT AND INSTALLATION OF CERTAIN ITEMS AND MATERIALS.
 - FOR ANY CONFLICT BETWEEN ARCHITECTURAL PLANS AND OTHER UTILITIES, REFER TO THE PRD/ TRU DESIGN ARCHITECT AND/OR ENGINEERS TO RESOLVE DESIGN ISSUE.

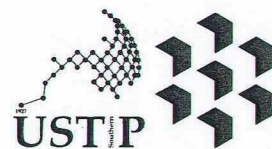
WALL FINISHES	
MARK	DESCRIPTION
WF-1	PLAIN CEMENT PLASTER (SMOOTH FINISH) 12.5MM THICK, OVER BRICKWORK, SAND BED OF 25MM GRANULAR MATERIAL, AND FINISH WITH 1.5MM PLASTER. ANTELOX COLOR EXTENDED.
WF-2	PLAIN CEMENT PLASTER (SMOOTH FINISH) 12.5MM THICK, OVER BRICKWORK, SAND BED OF 25MM GRANULAR MATERIAL, AND FINISH WITH 1.5MM PLASTER. ANTELOX COLOR EXTENDED.
WF-3	PLAIN CEMENT PLASTER (SMOOTH FINISH) 12.5MM THICK, OVER BRICKWORK, SAND BED OF 25MM GRANULAR MATERIAL, AND FINISH WITH 1.5MM PLASTER. ANTELOX COLOR EXTENDED.
WF-4	PLAIN CEMENT PLASTER (SMOOTH FINISH) 12.5MM THICK, OVER BRICKWORK, SAND BED OF 25MM GRANULAR MATERIAL, AND FINISH WITH 1.5MM PLASTER. ANTELOX COLOR EXTENDED.
PARTITION	
MARK	DESCRIPTION
WF-1	150MM THICK CONCRETE PERIMETER & INTERIOR PARTITION WALL
WF-2	150MM THICK CONCRETE PERIMETER & INTERIOR PARTITION WALL
WF-3	150MM THICK CONCRETE PERIMETER & INTERIOR PARTITION WALL
WF-4	150MM THICK CONCRETE PERIMETER & INTERIOR PARTITION WALL
DRAWING SYMBOLS	
	CEILING FINISHES
	FLOOR FINISHES
	WALL FINISHES OF SAME SIDE OF SYMBOL
	WALL FINISHES OF OTHER SIDE

WALL FINISHES	
MARK	DESCRIPTION
WF-1	PLAIN CEMENT PLASTER (SMOOTH FINISH) 12.5MM THICK, OVER BRICKWORK, SAND BED OF 25MM GRANULAR MATERIAL, AND FINISH WITH 1.5MM PLASTER. ANTELOX COLOR EXTENDED.
WF-2	PLAIN CEMENT PLASTER (SMOOTH FINISH) 12.5MM THICK, OVER BRICKWORK, SAND BED OF 25MM GRANULAR MATERIAL, AND FINISH WITH 1.5MM PLASTER. ANTELOX COLOR EXTENDED.
WF-3	PLAIN CEMENT PLASTER (SMOOTH FINISH) 12.5MM THICK, OVER BRICKWORK, SAND BED OF 25MM GRANULAR MATERIAL, AND FINISH WITH 1.5MM PLASTER. ANTELOX COLOR EXTENDED.
WF-4	PLAIN CEMENT PLASTER (SMOOTH FINISH) 12.5MM THICK, OVER BRICKWORK, SAND BED OF 25MM GRANULAR MATERIAL, AND FINISH WITH 1.5MM PLASTER. ANTELOX COLOR EXTENDED.
PARTITION	
MARK	DESCRIPTION
WF-1	150MM THICK CONCRETE PERIMETER & INTERIOR PARTITION WALL
WF-2	150MM THICK CONCRETE PERIMETER & INTERIOR PARTITION WALL
WF-3	150MM THICK CONCRETE PERIMETER & INTERIOR PARTITION WALL
WF-4	150MM THICK CONCRETE PERIMETER & INTERIOR PARTITION WALL
DRAWING SYMBOLS	
	CEILING FINISHES
	FLOOR FINISHES
	WALL FINISHES OF SAME SIDE OF SYMBOL
	WALL FINISHES OF OTHER SIDE



DRYWALL DETAIL
SCALE: 1:20 MTS

A 3 9



REPUBLIC OF THE PHILIPPINES
UNIVERSITY OF SCIENCE AND TECHNOLOGY OF SOUTHERN PHILIPPINES
CAGAYAN DE ORO CAMPUS
INFRASTRUCTURE PLANNING AND FACILITY DEVELOPMENT UNIT
CLARO M. RECTO AVENUE, LAPASAN, CAGAYAN DE ORO CITY 9000
TELEPHONE # (08822) 72-60-65 / (088) 856-1738 / 856-1739 | TELE FAX (088) 856-4896
WEBSITE: www.ustp.edu.ph

FERNANDO A. DUMPA
ARCHITECT OF RECORD
PRC NO. 013325 PTR NO. 6599271
DATE 02-10-2026
PLACE CAGAYAN DE ORO

PROJECT: PROPOSED CONSTRUCTION OF SMART ACADEMIC BUILDING PHASE 1, JASAAN CAMPUS
LOCATION: USTP JASAAN CAMPUS, MISAM ORIENTAL
OWNER: UNIVERSITY OF SCIENCE AND TECHNOLOGY OF SOUTHERN PHILIPPINES

RECOMMENDING APPROVAL:
ENGR. GRACE C. BABA
DIRECTOR, INFRASTRUCTURE PLANNING & FACILITIES DEVELOPMENT OFFICE

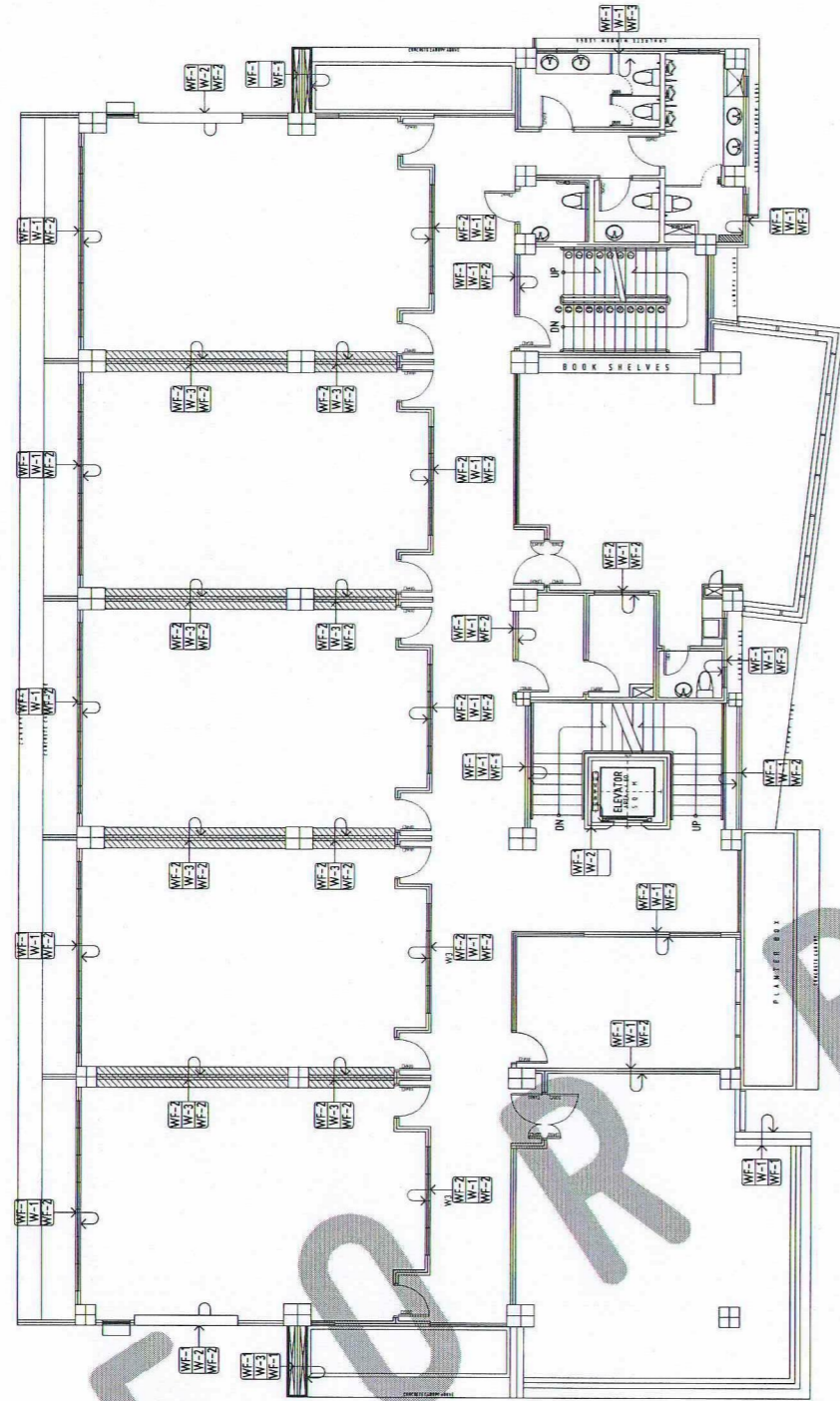
RECOMMENDING APPROVAL:
ATTY. ERWIN B. BUCHO
VP FOR ADMINISTRATION & LEGAL AFFAIRS

APPROVED BY:
DR. AMBROSIO B. CULTURA II
PRESIDENT, USTP SYSTEM

SHEET CONTENTS:
GROUND AND SECOND WALL FINISHES
DRYWALL DETAIL

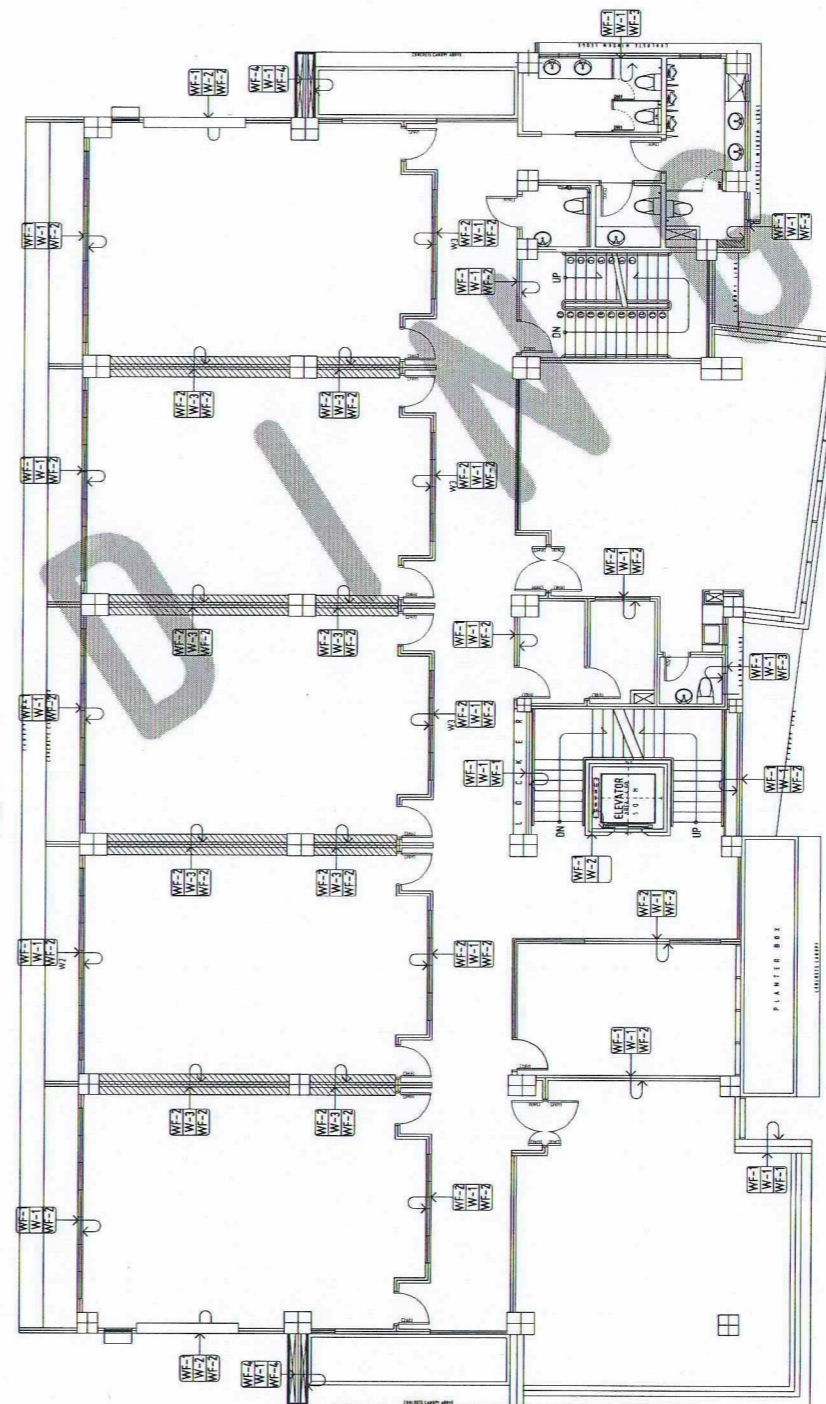
DRAWN BY:
DATE DRAWN:
10.01.2025
FNT:

A9



THIRD FLOOR PLAN - WALL FINISHES

SCALE: 1:100 MTS



FOURTH FLOOR PLAN - WALL FINISHES

SCALE: 1:100 MTS



- GENERAL NOTES:
1. FFL = FINISH FLOOR LINE. VERIFY FLOOR FINISHES/MATERIALS.
 2. ALL INTERIOR PARTITIONS AND FURNITURE LAYOUT ARE INDICATIVE ONLY AND MAY CHANGE. VERIFY INTERIOR DESIGN DRAWINGS.
 3. ALL LANDSCAPE ARCHITECTURAL ELEMENTS ARE INDICATIVE ONLY AND MAY CHANGE. VERIFY LANDSCAPE ARCHITECTURAL DRAWINGS.
 4. DO NOT SCALE DRAWINGS. WRITTEN DIMENSIONS TO GOVERN.
 5. IN CASE OF DISCREPANCY IN THE FIGURES AND DRAWINGS THE MATTER SHALL BE SUBMITTED IMMEDIATELY TO THE ARCHITECT BEFORE ADJUSTMENTS ARE TO BE MADE.
 6. VERIFY ACTUAL TECHNICAL SITE CONDITIONS.
 7. VERIFY ACTUAL ELEVATION MARKS AND LOT BOUNDARIES PRIOR TO COMMENCING WORK.
 8. ALL WORKS HEREIN SHALL BE DONE UNDER THE STRICT SUPERVISION OF DAILY LICENSED AND EXPERIENCED ARCHITECT/ENGINEER.
 9. LOT AND BUILDING BOUNDARIES SHOULD BE SUPPORTED BY RETAINING WALLS AND FENCES. VERIFY EXISTING HEIGHTS, ELEVATIONS AND OTHER SITE CONDITIONS.
 10. THE GENERAL CONTRACTOR, SUB-CONTRACTORS INCLUDING SPECIALTY CONTRACTORS, SHALL SUBMIT PROPER SHOP DRAWINGS INCLUDING MATERIALS SAMPLE PRIOR TO INSTALLATIONS FOR ARCHITECT'S APPROVAL.

- IMPORTANT NOTES:
1. CHECK AND VERIFY ACTUAL SITE CONDITION BEFORE CONSTRUCTION.
 2. CHECK AND REVIEW PLANS, AND IF THERE ARE CONFLICTS BETWEEN DRAWINGS, BOB, BOB, AND TECHNICAL SPECIFICATIONS, INFORM THE UPD THROUGH BFL BEFORE PROCEEDING AND INSTALLATION OF CERTAIN ITEMS AND MATERIALS.
 3. BEFORE INSTALLATION OF MATERIALS, ESPECIALLY ARCHITECTURAL FINISHES OR MATERIALS THAT WILL GREATLY AFFECT THE CONSTRUCTION, INSURE THE UPD THROUGH BFL (FOR INFORMATION) AND BFA (FOR MATERIAL APPROVAL) BEFORE PROCEEDMENT AND INSTALLATION OF CERTAIN ITEMS AND MATERIALS.
 4. FOR ANY CONFLICT BETWEEN ARCHITECTURAL PLANS AND OTHER UTILITIES, INSURE THE UPD DESIGN ARCHITECT AND/OR ENGINEERS TO RESOLVE DESIGN ISSUE.

WALL FINISHES	
MARK	DESCRIPTION
WF-1	PLAIN FINISH PLASTER (SMOOTH FINISH) TO BE APPLIED TO ALL INTERIOR WALLS AND PARTITIONS. FINISH TO BE PAINTED WITH WHITE EMULSION PAINT.
WF-2	PLAIN FINISH PLASTER (SMOOTH FINISH) TO BE APPLIED TO ALL INTERIOR WALLS AND PARTITIONS. FINISH TO BE PAINTED WITH WHITE EMULSION PAINT.
WF-3	PLAIN FINISH PLASTER (SMOOTH FINISH) TO BE APPLIED TO ALL INTERIOR WALLS AND PARTITIONS. FINISH TO BE PAINTED WITH WHITE EMULSION PAINT.
WF-4	PLAIN FINISH PLASTER (SMOOTH FINISH) TO BE APPLIED TO ALL INTERIOR WALLS AND PARTITIONS. FINISH TO BE PAINTED WITH WHITE EMULSION PAINT.

PARTITION	
MARK	DESCRIPTION
WF-1	STANDARD ONE PERSPECTOR & INTERIOR PARTITION WALLS
WF-2	SHEAR WALL
WF-3	DRY WALL
WF-4	2-10 CM THK CONCRETE WALL WITH 5 CM PLASTER

DRAWING SYMBOLS	
SCHEDULE OF FINISHES	
	CEILING FINISHES
	FLOOR FINISHES
	WALL FINISHES OF SAME SIDE OF SYMBOL
	WALL FINISHES OF OTHER SIDE

WALL FINISHES	
MARK	DESCRIPTION
WF-1	PLAIN FINISH PLASTER (SMOOTH FINISH) TO BE APPLIED TO ALL INTERIOR WALLS AND PARTITIONS. FINISH TO BE PAINTED WITH WHITE EMULSION PAINT.
WF-2	PLAIN FINISH PLASTER (SMOOTH FINISH) TO BE APPLIED TO ALL INTERIOR WALLS AND PARTITIONS. FINISH TO BE PAINTED WITH WHITE EMULSION PAINT.
WF-3	PLAIN FINISH PLASTER (SMOOTH FINISH) TO BE APPLIED TO ALL INTERIOR WALLS AND PARTITIONS. FINISH TO BE PAINTED WITH WHITE EMULSION PAINT.
WF-4	PLAIN FINISH PLASTER (SMOOTH FINISH) TO BE APPLIED TO ALL INTERIOR WALLS AND PARTITIONS. FINISH TO BE PAINTED WITH WHITE EMULSION PAINT.

PARTITION	
MARK	DESCRIPTION
WF-1	STANDARD ONE PERSPECTOR & INTERIOR PARTITION WALLS
WF-2	SHEAR WALL
WF-3	DRY WALL
WF-4	2-10 CM THK CONCRETE WALL WITH 5 CM PLASTER

DRAWING SYMBOLS	
SCHEDULE OF FINISHES	
	CEILING FINISHES
	FLOOR FINISHES
	WALL FINISHES OF SAME SIDE OF SYMBOL
	WALL FINISHES OF OTHER SIDE



REPUBLIC OF THE PHILIPPINES
UNIVERSITY OF SCIENCE AND TECHNOLOGY OF SOUTHERN PHILIPPINES
CAGAYAN DE ORO CAMPUS
INFRASTRUCTURE PLANNING AND FACILITY DEVELOPMENT UNIT
CLARO M. RECTO AVENUE, LAPASAN, CAGAYAN DE ORO CITY 9000
TELEPHONE # (08822) 72-60-65 / (088) 856-1736 / 856-1735 | TELE FAX (088) 856-4696
WEBSITE: www.ustp.edu.ph

Ferdinand A. Dumpa
ARCHITECT OF RECORD
PRC NO. 013329 PTR NO. 6585271
DATE 02-10-2026
TIN 185-092-837 PLACE CAGAYAN DE ORO

PROJECT PROPOSED CONSTRUCTION OF SMART ACADEMIC BUILDING PHASE 1, JASAAN CAMPUS
LOCATION USTP JASAAN CAMPUS, MISAMIS ORIENTAL
OWNER UNIVERSITY OF SCIENCE AND TECHNOLOGY OF SOUTHERN PHILIPPINES

RECOMMENDING APPROVAL:
ENGR. GRACE C. BABA
DIRECTOR, INFRASTRUCTURE PLANNING & FACILITIES DEVELOPMENT OFFICE

RECOMMENDING APPROVAL:
ATTY. ERWIN B. BUEKO
VP FOR ADMINISTRATION & LEGAL AFFAIRS

APPROVED BY:
DR. AMBROSIO B. CULTURA II
PRESIDENT, USTP SYSTEM

SHEET CONTENTS:
THIRD AND FOURTH WALL FINISHES

DRAWN BY:
DATE DRAWN:
10.01.2025
FMT:



A10