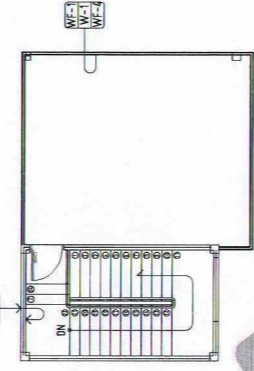


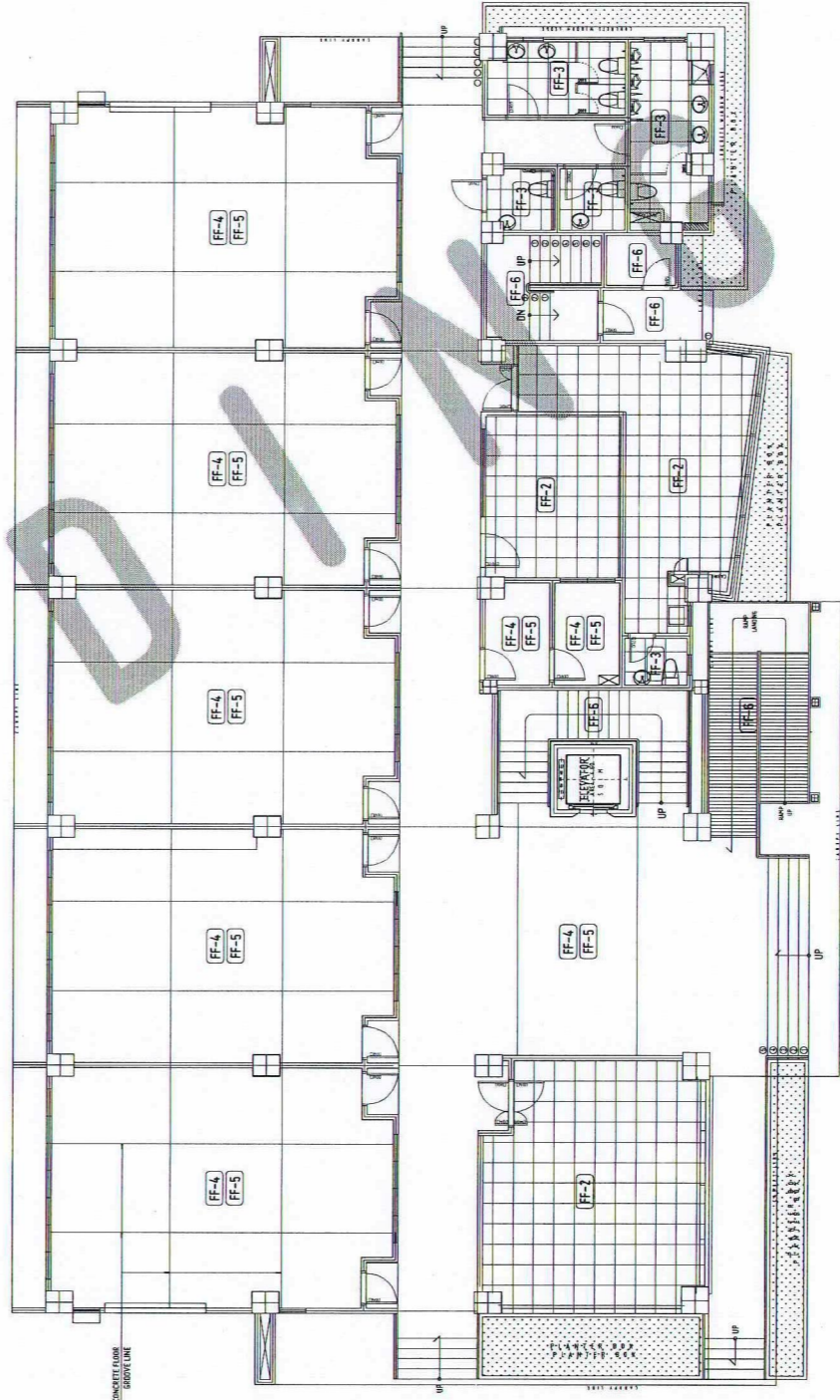
FIFTH FLOOR PLAN - WALL FINISHES
SCALE: 1:100 MTS

A 1 11



ROOF DECK PLAN
SCALE: 1:100 MTS

A 2 11



GROUND FLOOR PLAN - FLOOR FINISHES
SCALE: 1:100 MTS

A 3 11

- GENERAL NOTES:
1. FFL - FINISH FLOOR LINE. VERIFY FLOOR FINISHES/MATERIALS.
 2. ALL INTERIOR PARTITIONS AND FURNITURE LAYOUT ARE INDICATIVE ONLY AND MAY CHANGE. VERIFY INTERIOR DESIGN DRAWINGS.
 3. ALL LANDSCAPE ARCHITECTURE ELEMENTS ARE INDICATIVE ONLY AND MAY CHANGE. VERIFY LANDSCAPE ARCHITECTURE DRAWINGS.
 4. DO NOT SCALE DRAWINGS. WRITTEN DIMENSIONS TO GOVERN.
 5. IN CASE OF DISCREPANCY IN THE FIGURES AND DRAWINGS THE MATTER SHALL BE SUBMITTED IMMEDIATELY TO THE ARCHITECT BEFORE ADJUSTMENTS ARE TO BE MADE.
 6. VERIFY ACTUAL TECHNICAL SITE CONDITIONS.
 7. VERIFY ACTUAL ELEVATION MARKS AND LOT BOUNDARIES PRIOR TO COMMENCING WORK.
 8. ALL WORKS HEREIN SHALL BE DONE UNDER THE STRICT SUPERVISION OF DULY LICENSED AND EXPERIENCED ARCHITECT/ENGINEER.
 9. LOT AND BUILDING BOUNDARIES SHOULD BE SUPPORTED BY RETAINING WALLS AND FENCES. VERIFY EXISTING HEIGHTS, ELEVATIONS AND OTHER SITE CONDITIONS.
 10. THE GENERAL CONTRACTOR, SUB-CONTRACTORS INCLUDING SPECIALTY CONTRACTORS, SHALL SUBMIT PROPER SHOP DRAWINGS INCLUDING MATERIALS SAMPLE PRIOR TO INSTALLATIONS FOR ARCHITECT'S APPROVAL.

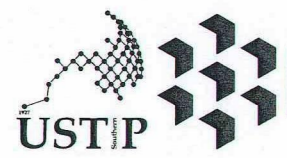
- IMPORTANT NOTES:
1. CHECK AND VERIFY ACTUAL SITE CONDITION BEFORE CONSTRUCTION. CHECK AND REVIEW PLANS, AND IF THERE ARE CONFLICTS BETWEEN DRAWINGS, BIDDING AND TECHNICAL SPECIFICATIONS, INFORM THE UPDOR THRU RFL BEFORE PROCUREMENT AND INSTALLATION OF CERTAIN ITEMS AND MATERIALS.
 2. BEFORE INSTALLATION OF MATERIALS, ESPECIALLY ARCHITECTURAL FINISHES OR MATERIALS THAT WILL GREATLY AFFECT THE CONSTRUCTION, INFORM THE UPDOR THRU RFL (FOR INFORMATION) AND RFL FOR MATERIAL APPROVAL BEFORE PROCUREMENT AND INSTALLATION OF CERTAIN ITEMS AND MATERIALS.
 3. FOR ANY CONFLICT BETWEEN ARCHITECTURAL PLANS AND OTHER UTILITIES, INFORM THE UPDOR DESIGN ARCHITECT AND/OR ENGINEERS TO RESOLVE DESIGN ISSUE.

WALL FINISHES	
MARK	DESCRIPTION
WF-1	PLAIN FINISH PAINTED TRUSS LINDS
WF-2	CONCRETE WALL PAINTED BY SHERWIN WILLIAMS (SHERWIN WILLIAMS) IN INTERIOR WHITE COLOR (EXTERIOR)
WF-3	PLAIN FINISH PAINTED TRUSS LINDS
WF-4	PLAIN FINISH PAINTED TRUSS LINDS

PARTITION	
MARK	DESCRIPTION
WF-1	15MM THK. CGR FIBERGLASS & INTERIOR PARTITION WALLS
WF-2	PLASTER WALL
WF-3	DRY WALL
WF-4	2-10MM THK. CGR WALL WITH 5MM FACELIFTER

DRAWING SYMBOLS	
SYMBOL	DESCRIPTION
(Symbol: Circle with dot)	CEILING FINISHES (FLOOR FINISHES)
(Symbol: Square with dot)	WALL FINISH OF SAME SIZE OF SYMBOL
(Symbol: Triangle with dot)	WALL FINISH OF OTHER SIZE

FLOOR FINISHES	
MARK	DESCRIPTION
FF-1	CONCRETE FLOOR FINISH WITH POLISHED
FF-2	CONCRETE FLOOR FINISH WITH POLISHED
FF-3	CONCRETE FLOOR FINISH WITH POLISHED
FF-4	CONCRETE FLOOR FINISH WITH POLISHED
FF-5	CONCRETE FLOOR FINISH WITH POLISHED
FF-6	CONCRETE FLOOR FINISH WITH POLISHED



REPUBLIC OF THE PHILIPPINES
UNIVERSITY OF SCIENCE AND TECHNOLOGY OF SOUTHERN PHILIPPINES
CAGAYAN DE ORO CAMPUS
INFRASTRUCTURE PLANNING AND FACILITY DEVELOPMENT UNIT
CLARDO M. RECTO AVENUE, LAPASAN, CAGAYAN DE ORO CITY 9000
TELEPHONE # (0822) 72-60-65 / (089) 856-1738 / 856-1739 | TELE FAX (089) 856-4696
WEBSITE: www.ustp.edu.ph

FERDINAND A. DUMPA
ARCHITECT OF RECORD
PRC NO. 013329 | PRC NO. 6589274
DATE 02-10-2026
TIN 185-092-837 | PLACE CAGAYAN DE ORO

PROJECT: PROPOSED CONSTRUCTION OF SMART ACADEMIC BUILDING PHASE 1, JASAAN CAMPUS
LOCATION: USTP JASAAN CAMPUS, MISAMIS ORIENTAL
OWNER: UNIVERSITY OF SCIENCE AND TECHNOLOGY OF SOUTHERN PHILIPPINES

RECOMMENDING APPROVAL:
ENGR. GRACE C. BABA
DIRECTOR, INFRASTRUCTURE PLANNING & FACILITIES DEVELOPMENT OFFICE

RECOMMENDING APPROVAL:
ATTY. ERWIN B. BULTO
VP FOR ADMINISTRATION & LEGAL AFFAIRS

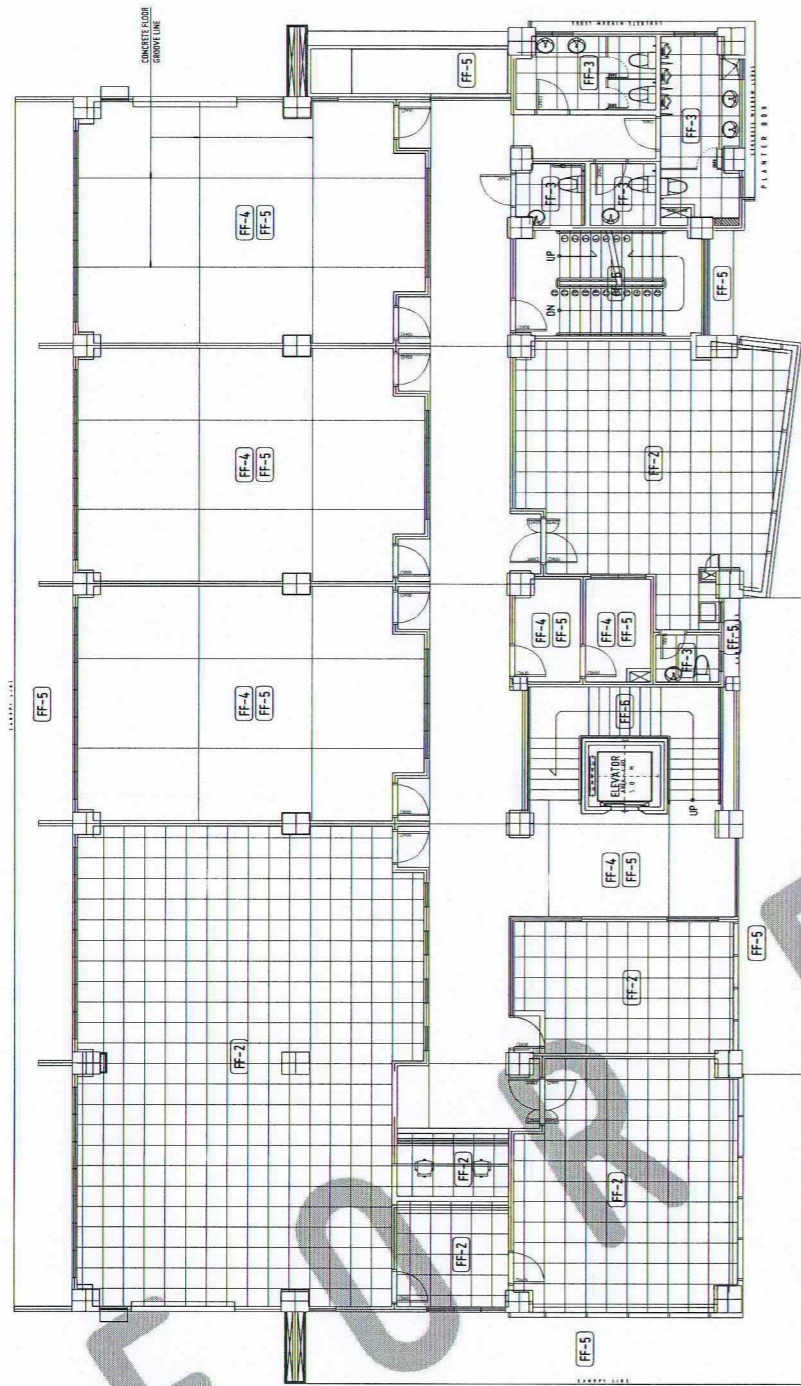
APPROVED BY:
DR. AMBRASIO B. CULTURA II
PRESIDENT, USTP SYSTEM

SHEET CONTENTS:
FIFTH AND ROOF DECK WALL FINISHES
GROUND FLOOR FINISHES

DRAWN BY:
DATE DRAWN:
10.01.2025
FNT:



A11

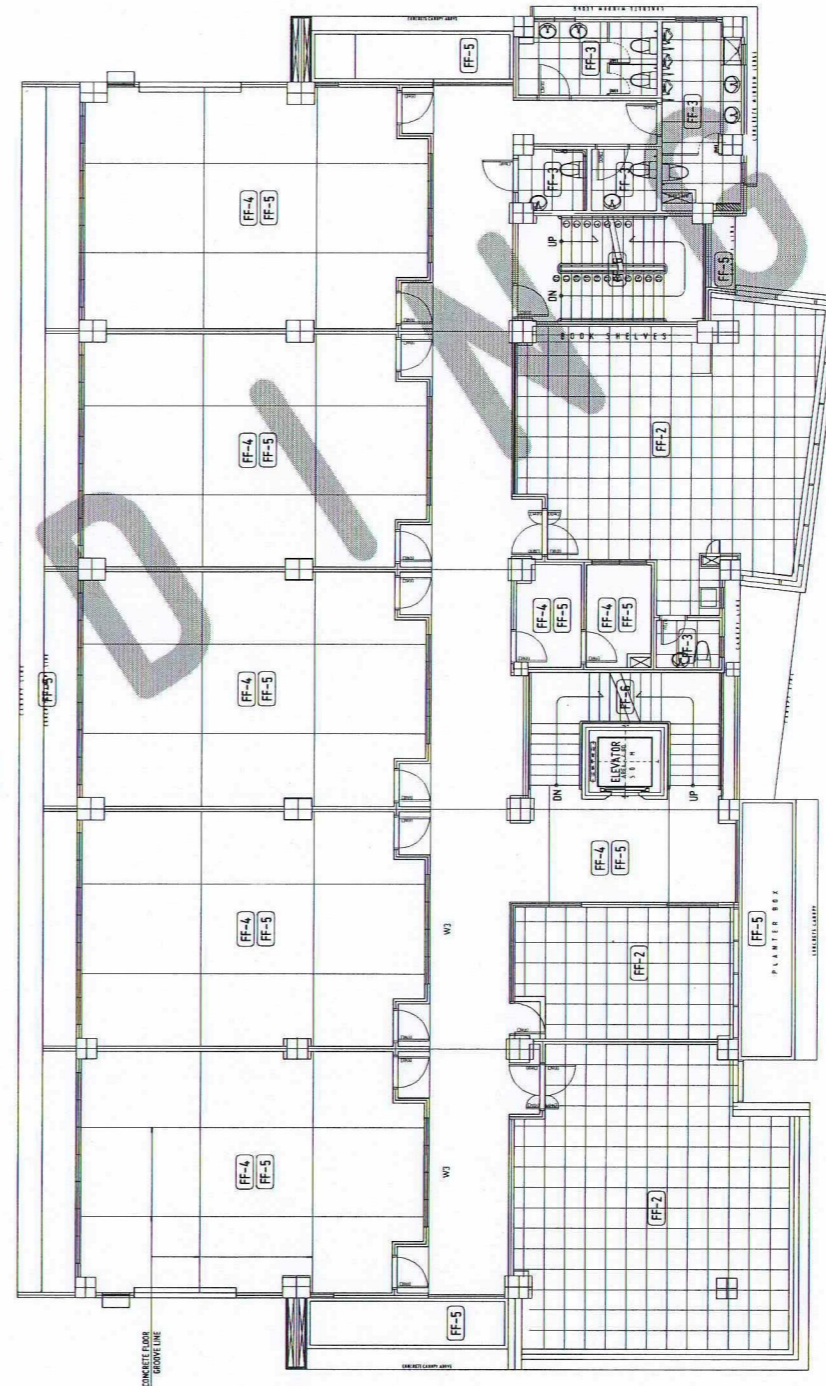


SECOND FLOOR PLAN - FLOOR FINISHES

SCALE: 1:100 MTS

A 1 12

NAME	DESCRIPTION
FF-1	CONCRETE FLOOR FINISH WITH POLISHED FLOOR TILES
FF-2	WOOD GRAB FINISH ON THE FLOOR FINISH WITH POLISHED FLOOR TILES
FF-3	WOOD GRAB FINISH ON THE FLOOR FINISH WITH POLISHED FLOOR TILES
FF-4	CLEAR CONCRETE FLOOR FINISH WITH POLISHED FLOOR TILES
FF-5	WOOD GRAB FINISH ON THE FLOOR FINISH WITH POLISHED FLOOR TILES
FF-6	WOOD GRAB FINISH ON THE FLOOR FINISH WITH POLISHED FLOOR TILES
FF-7	WOOD GRAB FINISH ON THE FLOOR FINISH WITH POLISHED FLOOR TILES
FF-8	WOOD GRAB FINISH ON THE FLOOR FINISH WITH POLISHED FLOOR TILES



THIRD FLOOR PLAN - FLOOR FINISHES

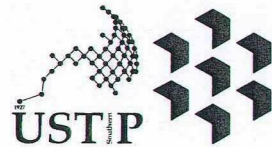
SCALE: 1:100 MTS

A 2 12

NAME	DESCRIPTION
FF-1	CONCRETE FLOOR FINISH WITH POLISHED FLOOR TILES
FF-2	WOOD GRAB FINISH ON THE FLOOR FINISH WITH POLISHED FLOOR TILES
FF-3	WOOD GRAB FINISH ON THE FLOOR FINISH WITH POLISHED FLOOR TILES
FF-4	CLEAR CONCRETE FLOOR FINISH WITH POLISHED FLOOR TILES
FF-5	WOOD GRAB FINISH ON THE FLOOR FINISH WITH POLISHED FLOOR TILES
FF-6	WOOD GRAB FINISH ON THE FLOOR FINISH WITH POLISHED FLOOR TILES
FF-7	WOOD GRAB FINISH ON THE FLOOR FINISH WITH POLISHED FLOOR TILES
FF-8	WOOD GRAB FINISH ON THE FLOOR FINISH WITH POLISHED FLOOR TILES

- GENERAL NOTES:
1. FF - FINISH FLOOR LINE. VERIFY FLOOR FINISHES/MATERIALS.
 2. ALL INTERIOR PARTITIONS AND FURNITURE LAYOUTS ARE INDICATIVE ONLY AND MAY CHANGE. VERIFY INTERIOR DESIGN DRAWINGS.
 3. ALL LANDSCAPE ARCHITECTURE ELEMENTS ARE INDICATIVE ONLY AND MAY CHANGE. VERIFY LANDSCAPE ARCHITECTURE DRAWINGS.
 4. DO NOT SCALE DRAWINGS. WRITTEN DIMENSIONS TO GOVERN.
 5. IN CASE OF DISCREPANCY IN THE FIGURES AND DRAWINGS THE MASTER SHALL BE SUBMITTED IMMEDIATELY TO THE ARCHITECT BEFORE ADJUSTMENTS ARE TO BE MADE.
 6. VERIFY ACTUAL TECHNICAL SITE CONDITIONS.
 7. VERIFY ACTUAL ELEVATION MARKS AND LOT BOUNDARIES PRIOR TO COMMENCING WORK.
 8. ALL WORKS HEREIN SHALL BE DONE UNDER THE STREET SUPERVISION OF DULY LICENSED AND EXPERIENCED ARCHITECT/ENGINEER.
 9. LOT AND BUILDING BOUNDARIES SHOULD BE SUPPORTED BY RETAINING WALLS AND FENCES. VERIFY EXISTING HEIGHTS, ELEVATIONS AND OTHER SITE CONDITIONS.
 10. THE GENERAL CONTRACTOR, SUB-CONTRACTORS INCLUDING SPECIALTY CONTRACTORS, SHALL SUBMIT PROPER SHOP DRAWINGS INCLUDING MATERIALS SAMPLE PRIOR TO INSTALLATIONS FOR ARCHITECT'S APPROVAL.

- IMPORTANT NOTES:
1. CHECK AND VERIFY ACTUAL SITE CONDITION BEFORE CONSTRUCTION.
 2. CHECK AND REVIEW PLANS, AND IF THERE ARE CONFLICTS BETWEEN DRAWINGS, BOB, BOB, AND TECHNICAL SPECIFICATIONS, INFORM THE IPDUI THRU IRI BEFORE PROCUREMENT AND INSTALLATION OF CERTAIN ITEMS AND MATERIALS.
 3. BEFORE INSTALLATION OF MATERIALS, ESPECIALLY ARCHITECTURAL FINISHES OR MATERIALS THAT WILL GREATLY AFFECT THE CONSTRUCTION, INSURE THE IPDUI THRU IRI (FOR INFORMATION) AND IRI (FOR MATERIAL APPROVAL) BEFORE PROCUREMENT AND INSTALLATION OF CERTAIN ITEMS AND MATERIALS.
 4. FOR ANY CONFLICT BETWEEN ARCHITECTURAL PLANS AND OTHER UTILITIES, INFORM THE IPDUI DESIGN ARCHITECT AND/OR ENGINEERS TO RESOLVE DESIGN ISSUE.



REPUBLIC OF THE PHILIPPINES
UNIVERSITY OF SCIENCE AND TECHNOLOGY OF SOUTHERN PHILIPPINES
CAGAYAN DE ORO CAMPUS
INFRASTRUCTURE PLANNING AND FACILITY DEVELOPMENT UNIT
CLARO M. RECTO AVENUE, LAPASAN, CAGAYAN DE ORO CITY 9000
TELEPHONE # (08822) 72-60-65 / (088) 856-1738 / 856-1739 | TELE FAX (088) 856-4696
WEBSITE: www.ustip.edu.ph

FERDINAND A. DUMPA
ARCHITECT OF RECORD
PROJECT
PRC NO. 013329 PTA NO. 6592271 LOCATION
DATE 02-10-2026
TIN 185-092-837 PLACE CAGAYAN DE ORO OWNER

PROPOSED CONSTRUCTION OF SMART ACADEMIC BUILDING
PHASE 1, JASAAAN CAMPUS
USTP JASAAAN CAMPUS, MISAMIS ORIENTAL
UNIVERSITY OF SCIENCE AND TECHNOLOGY OF SOUTHERN PHILIPPINES

RECOMMENDING APPROVAL:
ENGR. GRACE C. BABA
DIRECTOR, INFRASTRUCTURE PLANNING & FACILITIES DEVELOPMENT OFFICE

RECOMMENDING APPROVAL:
ATTY. ERWIN B. BUCIO
VP FOR ADMINISTRATION & LEGAL AFFAIRS

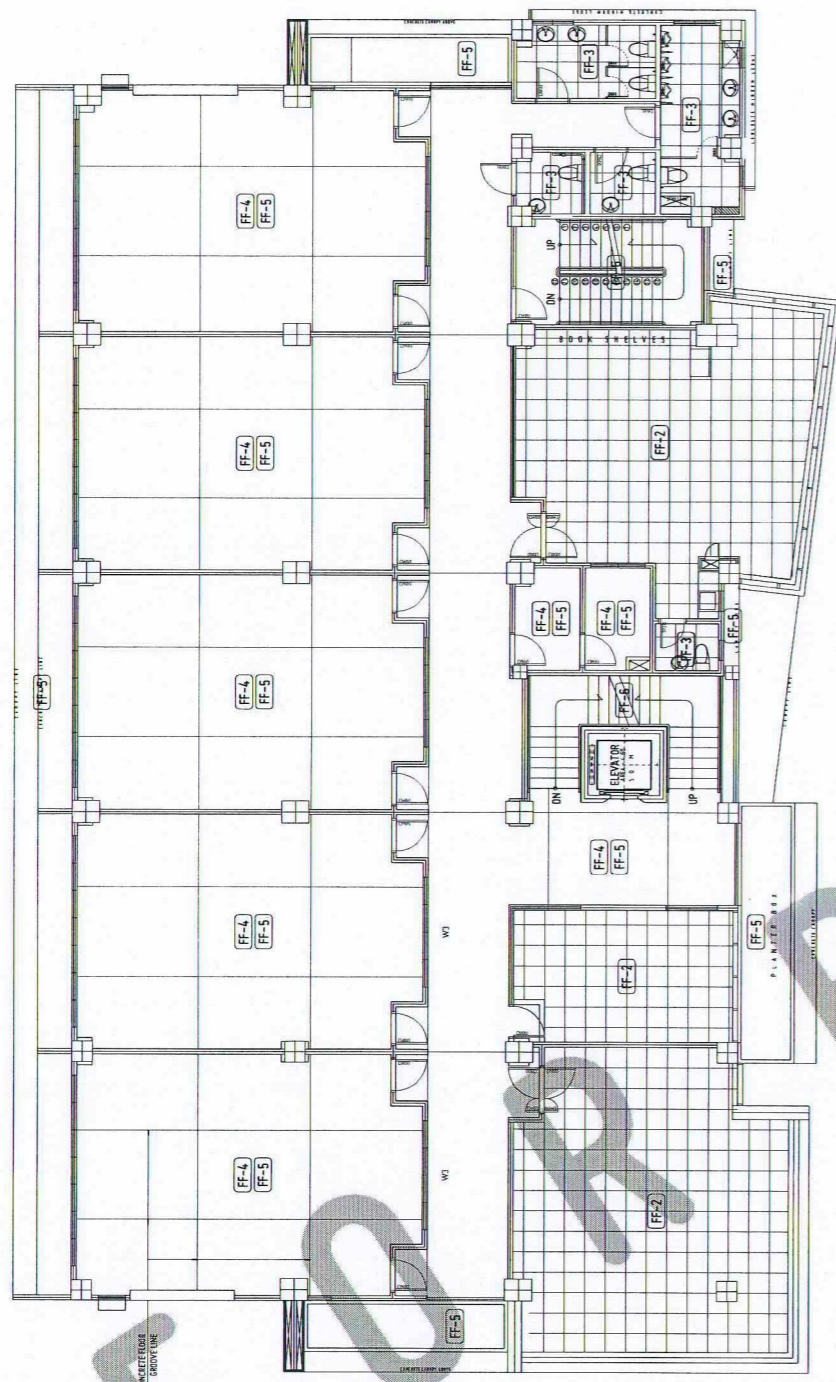
APPROVED BY:
DR. AMBROSIO B. CULTURA II
PRESIDENT, USTP SYSTEM

SHEET CONTENTS:
SECOND AND THIRD FLOOR FINISHES
DATE DRAWN:
10.01.2025
FNT:

DRAWN BY:

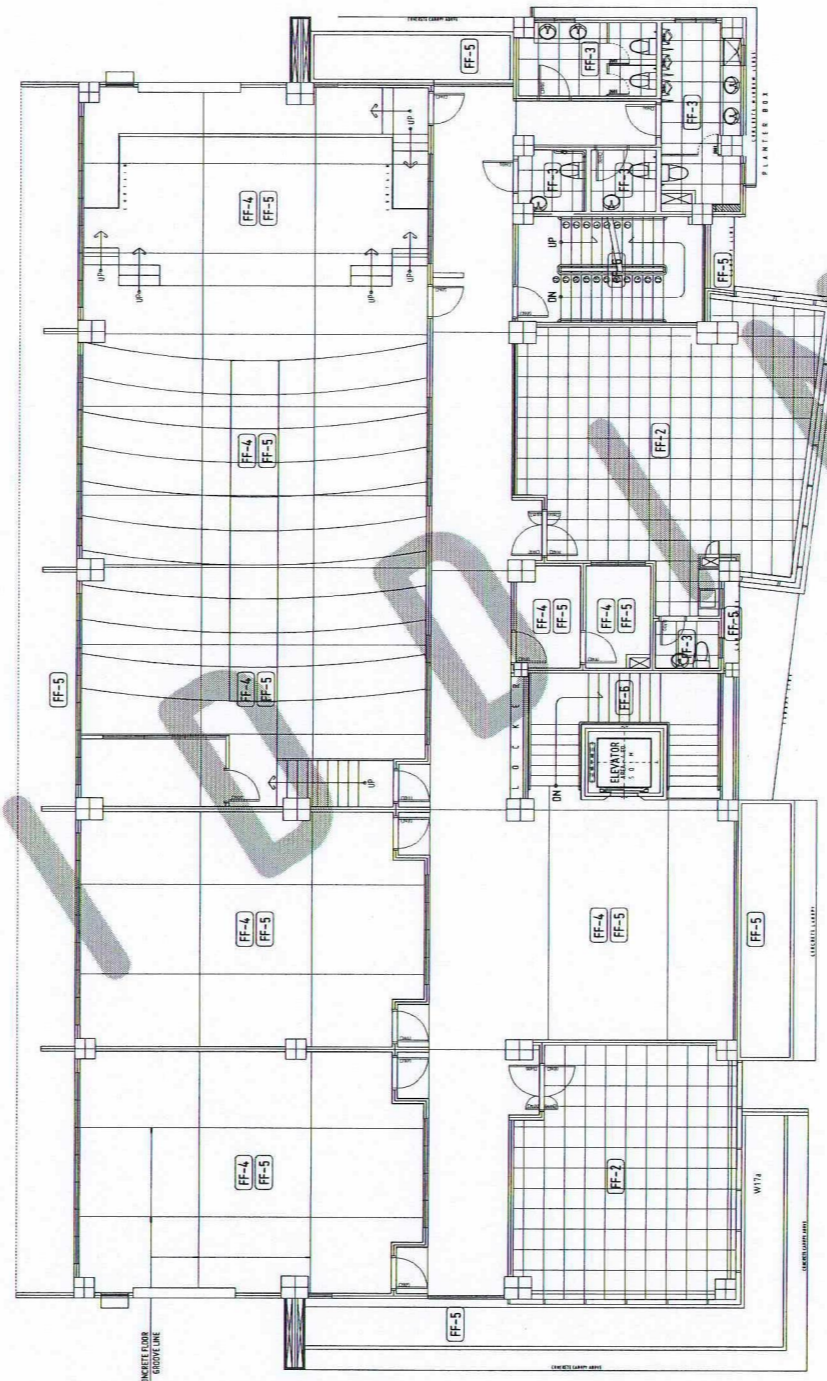


A12



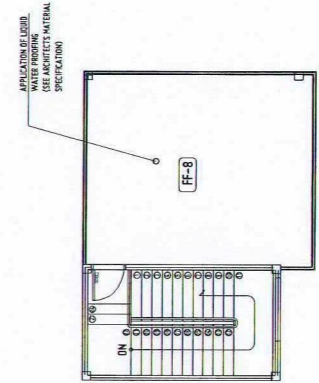
FOURTH FLOOR PLAN - FLOOR FINISHES
SCALE: 1:100 MTS

A 1 13



FIFTH FLOOR PLAN - FLOOR FINISHES
SCALE: 1:100 MTS

A 2 13



ROOF DECK PLAN
SCALE: 1:100 MTS

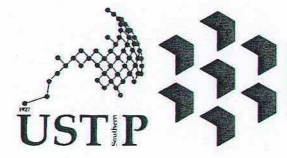
A 3 13

MARK	DESCRIPTION
FF-1	SMOOTH FLOOR FINISHES, EXTERIOR SLIP RESISTANT FLOOR TILE, VITRIFIED CERAMIC
FF-2	SMOOTH FLOOR FINISHES, INTERIOR SLIP RESISTANT FLOOR TILE, VITRIFIED CERAMIC
FF-3	SMOOTH FLOOR FINISHES, INTERIOR SLIP RESISTANT FLOOR TILE, VITRIFIED CERAMIC
FF-4	CLEAR CONCRETE FLOOR FINISHES
FF-5	POURED POLISHED CONCRETE FLOOR FINISHES
FF-6	SAND WASHED FLOOR FINISH WITH RETAINER
FF-7	WOOD GRAIN FINISH CONCRETE FLOOR FINISHES
FF-8	WOOD GRAIN FINISH CONCRETE FLOOR FINISHES

MARK	DESCRIPTION
FF-1	SMOOTH FLOOR FINISHES, EXTERIOR SLIP RESISTANT FLOOR TILE, VITRIFIED CERAMIC
FF-2	SMOOTH FLOOR FINISHES, INTERIOR SLIP RESISTANT FLOOR TILE, VITRIFIED CERAMIC
FF-3	SMOOTH FLOOR FINISHES, INTERIOR SLIP RESISTANT FLOOR TILE, VITRIFIED CERAMIC
FF-4	CLEAR CONCRETE FLOOR FINISHES
FF-5	POURED POLISHED CONCRETE FLOOR FINISHES
FF-6	SAND WASHED FLOOR FINISH WITH RETAINER
FF-7	WOOD GRAIN FINISH CONCRETE FLOOR FINISHES
FF-8	WOOD GRAIN FINISH CONCRETE FLOOR FINISHES

- GENERAL NOTES:
- FF-1 = FINISH FLOOR LINE. VERIFY FLOOR FINISHES/MATERIALS.
 - ALL INTERIOR PARTITIONS AND FURNITURE LAYOUT ARE INDICATIVE ONLY AND MAY CHANGE. VERIFY INTERIOR DESIGN DRAWINGS.
 - ALL LANDSCAPE ARCHITECTURE ELEMENTS ARE INDICATIVE ONLY AND MAY CHANGE. VERIFY LANDSCAPE ARCHITECTURE DRAWINGS.
 - DO NOT SCALE DRAWINGS. WRITTEN DIMENSIONS TO GOVERN.
 - IN CASE OF DISCREPANCY IN THE FIGURES AND DRAWINGS THE MATTER SHALL BE SUBMITTED IMMEDIATELY TO THE ARCHITECT BEFORE ADJUSTMENTS ARE TO BE MADE.
 - VERIFY ACTUAL TECHNICAL SITE CONDITIONS.
 - VERIFY ACTUAL ELEVATION MARKS AND LOT BOUNDARIES PRIOR TO COMMENCING WORK.
 - ALL WORKS HEREIN SHALL BE DONE UNDER THE STRICT SUPERVISION OF DULY LICENSED AND EXPERIENCED ARCHITECT/ENGINEER.
 - LOT AND BUILDING BOUNDARIES SHOULD BE SUPPORTED BY RETAINING WALLS AND FENCES. VERIFY EXISTING HEIGHTS, ELEVATIONS AND OTHER SITE CONDITIONS.
 - THE GENERAL CONTRACTOR, SUB-CONTRACTORS INCLUDING SPECIALTY CONTRACTORS, SHALL SUBMIT PROPER SHOP DRAWINGS INCLUDING MATERIALS SAMPLE PRIOR TO INSTALLATION FOR ARCHITECTS APPROVAL.

- IMPORTANT NOTES:
- CHECK AND VERIFY ACTUAL SITE CONDITION BEFORE CONSTRUCTION. CHECK AND REVIEW PLANS, AND IF THERE ARE CONFLICTS BETWEEN DRAWINGS, BIDDING AND TECHNICAL SPECIFICATIONS, NOTIFY THE UPDRU THRU RFI, BEFORE PROCUREMENT AND INSTALLATION OF CERTAIN ITEMS AND MATERIALS.
 - BEFORE INSTALLATION OF MATERIALS, ESPECIALLY ARCHITECTURAL FINISHES ON MATERIALS THAT WILL GREATLY AFFECT THE CONSTRUCTION, NOTIFY THE UPDRU THRU RFI (FOR INFORMATION) AND RFI FOR MATERIAL APPROVAL BEFORE PROCUREMENT AND INSTALLATION OF CERTAIN ITEMS AND MATERIALS.
 - FOR ANY CONFLICT BETWEEN ARCHITECTURAL PLANS AND OTHER UTILITIES, NOTIFY THE UPDRU DESIGN ARCHITECT AND/OR ENGINEERS TO RESOLVE DESIGN ISSUE.



REPUBLIC OF THE PHILIPPINES
UNIVERSITY OF SCIENCE AND TECHNOLOGY OF SOUTHERN PHILIPPINES
CAGAYAN DE ORO CAMPUS
INFRASTRUCTURE PLANNING AND FACILITY DEVELOPMENT UNIT
CLARDO M. RECTO AVENUE, LAPASAN, CAGAYAN DE ORO CITY 9000
TELEPHONE # (08822) 72-60-65 / (088) 856-1738 / 856-1739 | TELE FAX (088) 856-4696
WEBSITE: www.ustp.edu.ph

FERDINAND A. DUMPA
ARCHITECT OF RECORD
PROJECT
PRC NO. 013823 PIR NO. 6599271
DATE 02-10-2026
TIN 185-092-837 PLACE CAGAYAN DE ORO OWNER

PROPOSED CONSTRUCTION OF SMART ACADEMIC BUILDING
PHASE 1, JASAAN CAMPUS
USTP JASAAN CAMPUS, MISAMIS ORIENTAL
UNIVERSITY OF SCIENCE AND TECHNOLOGY OF SOUTHERN PHILIPPINES

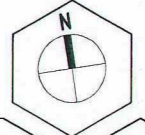
RECOMMENDING APPROVAL:
ENGR. BRACE C. BABA
DIRECTOR, INFRASTRUCTURE PLANNING & FACILITIES DEVELOPMENT OFFICE

RECOMMENDING APPROVAL:
ATTY. ERWIN B. BUCIO
VP FOR ADMINISTRATION & LEGAL AFFAIRS

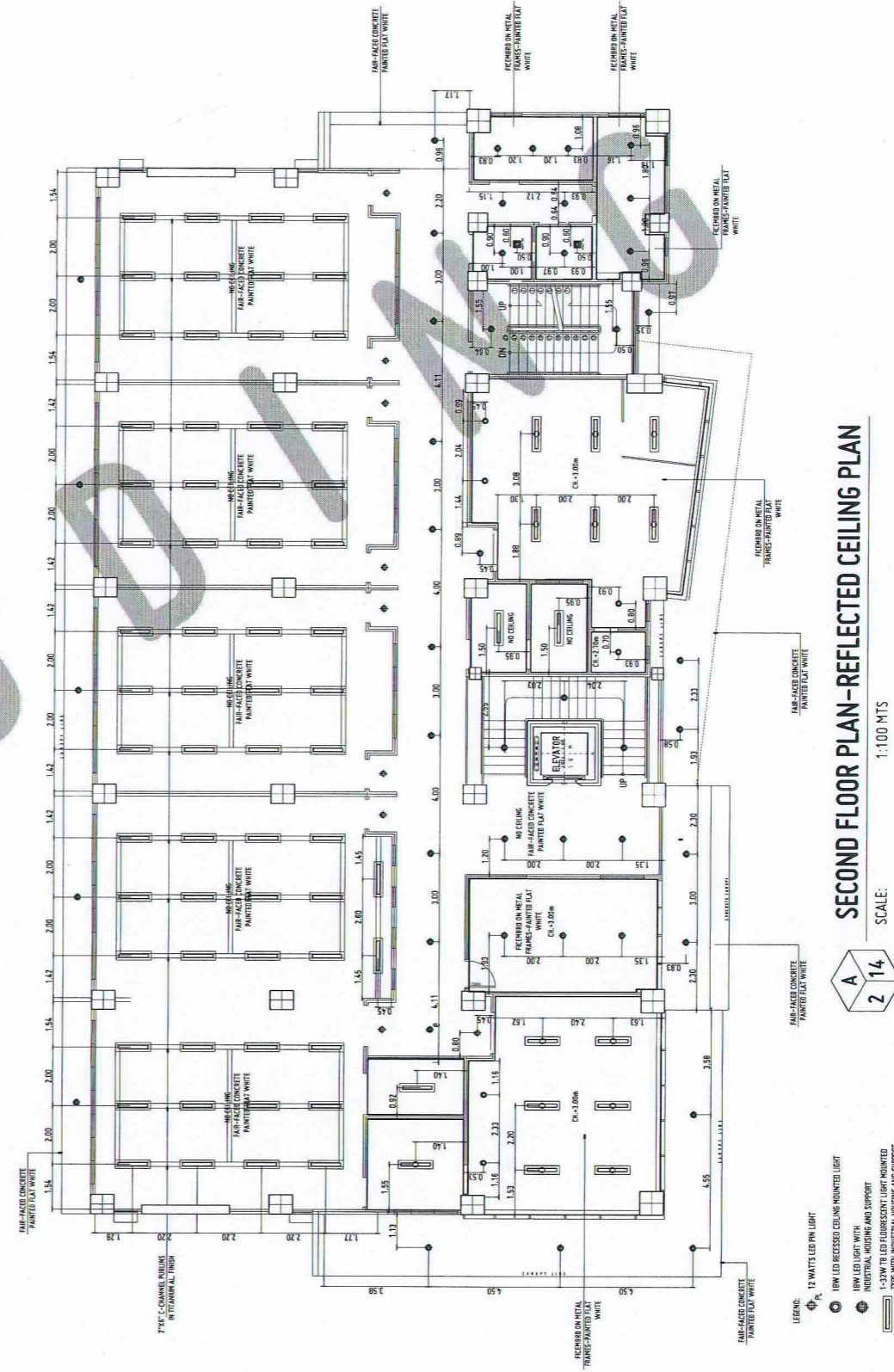
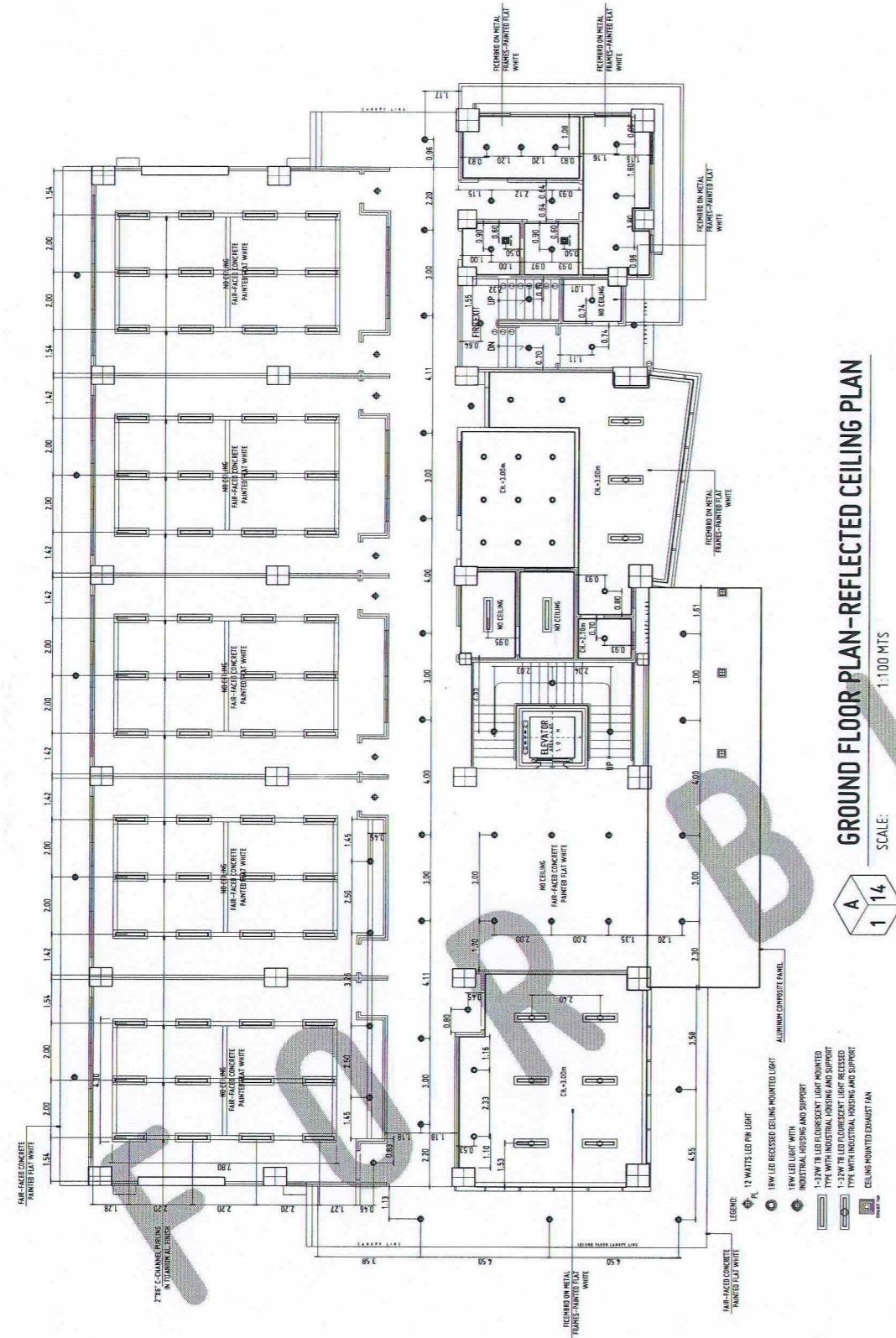
APPROVED BY:
DR. AMBRASIO B. CULTURA II
PRESIDENT, USTP SYSTEM

SHEET CONTENTS:
FOURTH, FIFTH AND ROOF DECK
FLOOR FINISHES

DRAWN BY:
DATE DRAWN:
10.01.2025
FNT:



A13



- GENERAL NOTES:**
1. FFL = FINISH FLOOR LINE. VERIFY FLOOR FINISHES/MATERIALS.
 2. ALL INTERIOR PARTITIONS AND FURNITURE LAYOUT ARE INDICATIVE ONLY AND MAY CHANGE. VERIFY INTERIOR DESIGN DRAWINGS.
 3. ALL LANDSCAPE ARCHITECTURE ELEMENTS ARE INDICATIVE ONLY AND MAY CHANGE. VERIFY LANDSCAPE ARCHITECTURE DRAWINGS.
 4. DO NOT SCALE DRAWINGS. WRITTEN DIMENSIONS TO GOVERN.
 5. IN CASE OF DISCREPANCY IN THE FIGURES AND DRAWINGS THE MATTER SHALL BE SUBMITTED IMMEDIATELY TO THE ARCHITECT BEFORE ADJUSTMENTS ARE TO BE MADE.
 6. VERIFY ACTUAL TECHNICAL SITE CONDITIONS.
 7. VERIFY ACTUAL ELEVATION MARKS AND LOT BOUNDARIES PRIOR TO COMMENCING WORK.
 8. ALL WORKS HEREIN SHALL BE DONE UNDER THE STRICT SUPERVISION OF DULY LICENSED AND EXPERIENCED ARCHITECT/ENGINEER.
 9. LOT AND BUILDING BOUNDARIES SHOULD BE SUPPORTED BY REMAINING WALLS AND FENCES. VERIFY EXISTING HEIGHTS, ELEVATIONS AND OTHER SITE CONDITIONS.
 10. THE GENERAL CONTRACTOR, SUB-CONTRACTORS INCLUDING SPECIALTY CONTRACTORS, SHALL SUBMIT PROPER SHOP DRAWINGS INCLUDING MATERIALS SAMPLE PRIOR TO INSTALLATIONS FOR ARCHITECT'S APPROVAL.

- IMPORTANT NOTES:**
1. CHECK AND VERIFY ACTUAL SITE CONDITION BEFORE CONSTRUCTION.
 2. CHECK AND REVIEW PLANS, AND IF THERE ARE CONFLICTS BETWEEN DRAWINGS, BIDDING, AND TECHNICAL SPECIFICATIONS, INFORM THE IPDU THRU RFI, BEFORE PROCUREMENT AND INSTALLATION OF CERTAIN ITEMS AND MATERIALS.
 3. BEFORE INSTALLATION OF MATERIALS, ESPECIALLY ARCHITECTURAL FINISHES OR MATERIALS THAT WILL GREATLY AFFECT THE CONSTRUCTION, INFORM THE IPDU THRU RFI (FOR INFORMATION) AND RFA (FOR MATERIAL APPROVAL) BEFORE PROCUREMENT AND INSTALLATION OF CERTAIN ITEMS AND MATERIALS.
 4. FOR ANY CONFLICT BETWEEN ARCHITECTURAL PLANS AND OTHER UTILITIES, INFORM THE IPDU DESIGN ARCHITECT AND/OR ENGINEERS TO RESOLVE DESIGN ISSUE.



REPUBLIC OF THE PHILIPPINES
UNIVERSITY OF SCIENCE AND TECHNOLOGY OF SOUTHERN PHILIPPINES
CAGAYAN DE ORO CAMPUS
INFRASTRUCTURE PLANNING AND FACILITY DEVELOPMENT UNIT
CLARO M. RECTO AVENUE, LAPASAN, CAGAYAN DE ORO CITY 9000
TELEPHONE # (08822) 72-60-65 / (088) 856-1736 / 856-1739 | TELE FAX (088) 856-4696
WEBSITE: www.ustp.edu.ph

FERDINAND A. DUMPA
ARCHITECT OF RECORD
PRC NO. 03329 PTR NO. 6589271
DATE 02-10-2026
TIN 185-092-837 PLACE CAGAYAN DE ORO

PROPOSED CONSTRUCTION OF SMART ACADEMIC BUILDING PHASE 1, JASAAN CAMPUS
LOCATION: USTP JASAAN CAMPUS, MISAMIS ORIENTAL
OWNER: UNIVERSITY OF SCIENCE AND TECHNOLOGY OF SOUTHERN PHILIPPINES

RECOMMENDING APPROVAL:
ENGR. GRACE C. BABA
DIRECTOR, INFRASTRUCTURE PLANNING & FACILITIES DEVELOPMENT OFFICE

RECOMMENDING APPROVAL:
ATTY. ERWIN B. BUETO
VP FOR ADMINISTRATION & LEGAL AFFAIRS

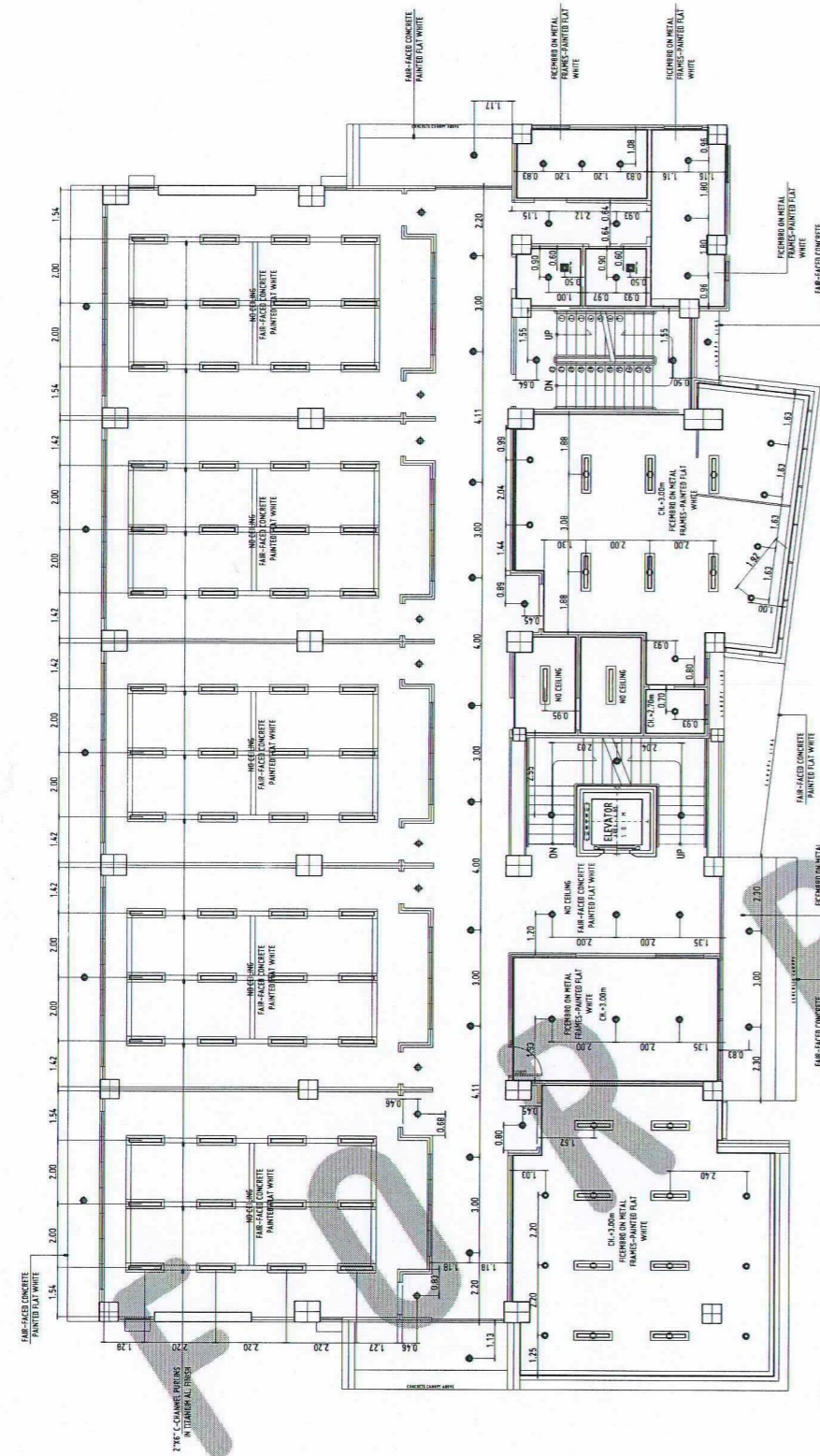
APPROVED BY:
DR. AMBROSIO B. CULTURA II
PRESIDENT, USTP SYSTEM

SHEET CONTENTS:
GROUND AND SECOND RCP

DRAWN BY:
DATE DRAWN:
10.01.2025
FNT:



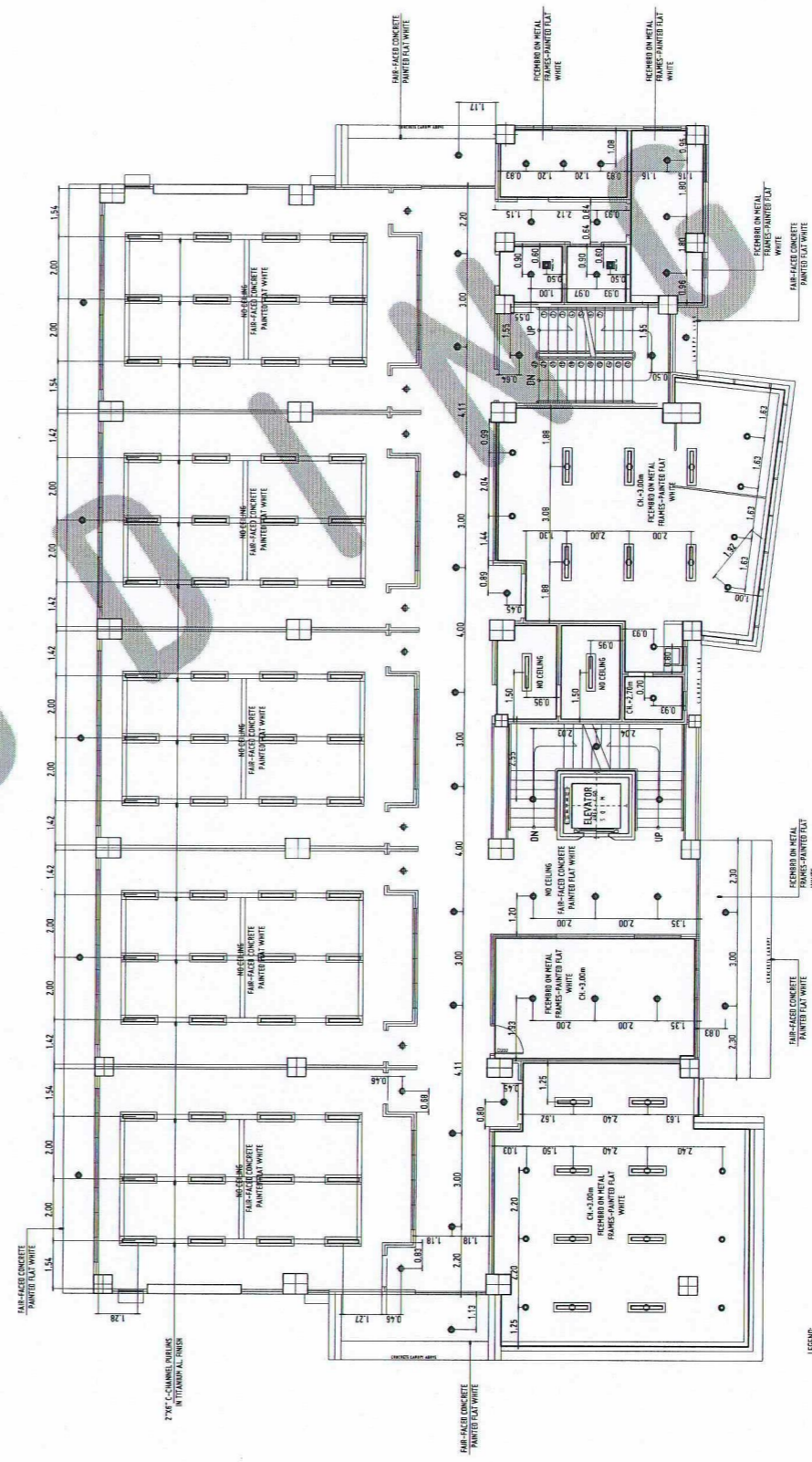
A14



THIRD FLOOR PLAN-REFLECTED CEILING PLAN
SCALE: 1:100 MTS

A
1 15

- LEGEND:
- 12 WATTS LED PIN LIGHT
 - 15W LED RECESSED CEILING MOUNTED LIGHT
 - 15W LED LIGHT WITH INDUSTRIAL HOUSING AND SUPPORT
 - 1-23W T8 LED FLUORESCENT LIGHT MOUNTED TYPE WITH INDUSTRIAL HOUSING AND SUPPORT
 - 1-23W T8 LED FLUORESCENT LIGHT RECESSED TYPE WITH INDUSTRIAL HOUSING AND SUPPORT
 - CEILING MOUNTED EXHAUST FAN

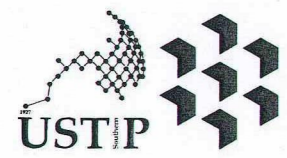


FOURTH FLOOR PLAN-REFLECTED CEILING PLAN
SCALE: 1:100 MTS

A
2 15

- LEGEND:
- 12 WATTS LED PIN LIGHT
 - 15W LED RECESSED CEILING MOUNTED LIGHT
 - 15W LED LIGHT WITH INDUSTRIAL HOUSING AND SUPPORT
 - 1-23W T8 LED FLUORESCENT LIGHT MOUNTED TYPE WITH INDUSTRIAL HOUSING AND SUPPORT
 - 1-23W T8 LED FLUORESCENT LIGHT RECESSED TYPE WITH INDUSTRIAL HOUSING AND SUPPORT
 - CEILING MOUNTED EXHAUST FAN

- GENERAL NOTES:
1. FF = FINISH FLOOR LINE. VERIFY FLOOR FINISHES/MATERIALS.
 2. ALL INTERIOR PARTITIONS AND FURNITURE LAYOUT ARE INDICATIVE ONLY AND MAY CHANGE. VERIFY INTERIOR DESIGN DRAWINGS.
 3. ALL LANDSCAPE ARCHITECTURE ELEMENTS ARE INDICATIVE ONLY AND MAY CHANGE. VERIFY LANDSCAPE ARCHITECTURE DRAWINGS.
 4. DO NOT SCALE DRAWINGS. WRITTEN DIMENSIONS TO GOVERN.
 5. IN CASE OF DISCREPANCY IN THE FIGURES AND DRAWINGS THE MATTER SHALL BE SUBMITTED IMMEDIATELY TO THE ARCHITECT BEFORE ADJUSTMENTS ARE TO BE MADE.
 6. VERIFY ACTUAL TECHNICAL SITE CONDITIONS.
 7. VERIFY ACTUAL ELEVATION MARKS AND LET BOUNDARIES PRIOR TO COMMENCING WORK.
 8. ALL WORKS HEREIN SHALL BE DONE UNDER THE STRICT SUPERVISION OF DULY LICENSED AND EXPERIENCED ARCHITECT/ENGINEER.
 9. LOT AND BUILDING BOUNDARIES SHOULD BE SUPPORTED BY RETAINING WALLS AND FENCES. VERIFY EXISTING HEIGHTS, ELEVATIONS AND OTHER SITE CONDITIONS.
 10. THE GENERAL CONTRACTOR, SUB-CONTRACTORS INCLUDING SPECIALTY CONTRACTORS, SHALL SUBMIT PROPER SHOP DRAWINGS INCLUDING MATERIALS SAMPLE PRIOR TO INSTALLATIONS FOR ARCHITECTS APPROVAL.
- IMPORTANT NOTES:
1. CHECK AND VERIFY ACTUAL SITE CONDITION BEFORE CONSTRUCTION. CHECK AND REVIEW PLANS, AND IF THERE ARE CONFLICTS BETWEEN DRAWINGS, BIDDING, AND TECHNICAL SPECIFICATIONS, INFORM THE PPFD THRU BFO BEFORE PROCUREMENT AND INSTALLATION OF CERTAIN ITEMS AND MATERIALS.
 2. BEFORE INSTALLATION OF MATERIALS, ESPECIALLY ARCHITECTURAL FINISHES OR MATERIALS THAT WILL GREATLY AFFECT THE CONSTRUCTION, INFORM THE PPFD THRU BFO (FOR INFORMATION) AND BFA (FOR MATERIAL APPROVAL) BEFORE PROCUREMENT AND INSTALLATION OF CERTAIN ITEMS AND MATERIALS.
 3. FOR ANY CONFLICT BETWEEN ARCHITECTURAL PLANS AND OTHER UTILITIES, INFORM THE PPFD DESIGN ARCHITECT AND/OR ENGINEERS TO RESOLVE DESIGN ISSUE.



REPUBLIC OF THE PHILIPPINES
UNIVERSITY OF SCIENCE AND TECHNOLOGY OF SOUTHERN PHILIPPINES
CAGAYAN DE ORO CAMPUS
INFRASTRUCTURE PLANNING AND FACILITY DEVELOPMENT UNIT
CLARO M. RECTO AVENUE, LAPASAN, CAGAYAN DE ORO CITY 9000
TELEPHONE # (08822) 72-60-65 / (088) 856-1738 / 856-1739 | TELE FAX (088) 856-4696
WEBSITE: www.ustp.edu.ph

FERDINAND A. DUMPA
ARCHITECT OF RECORD
PRC NO. 013326 EPD NO. 6589271
DATE 02-10-2026
TIN 185-092-837 PLACE CAGAYAN DE ORO

PROJECT: PROPOSED CONSTRUCTION OF SMART ACADEMIC BUILDING PHASE 1, JASAAN CAMPUS
LOCATION: USTP JASAAN CAMPUS, MISAMIS ORIENTAL
OWNER: UNIVERSITY OF SCIENCE AND TECHNOLOGY OF SOUTHERN PHILIPPINES

RECOMMENDING APPROVAL:
ENGR. GRACE C. BABA
DIRECTOR, INFRASTRUCTURE PLANNING & FACILITIES DEVELOPMENT OFFICE

RECOMMENDING APPROVAL:
ATTY. ERWIN B. BUCIO
VP FOR ADMINISTRATION & LEGAL AFFAIRS

APPROVED BY:
DR. AMBROSIO B. CULTURA II
PRESIDENT, USTP SYSTEM

SHEET CONTENTS:
THIRD AND FOURTH RCP

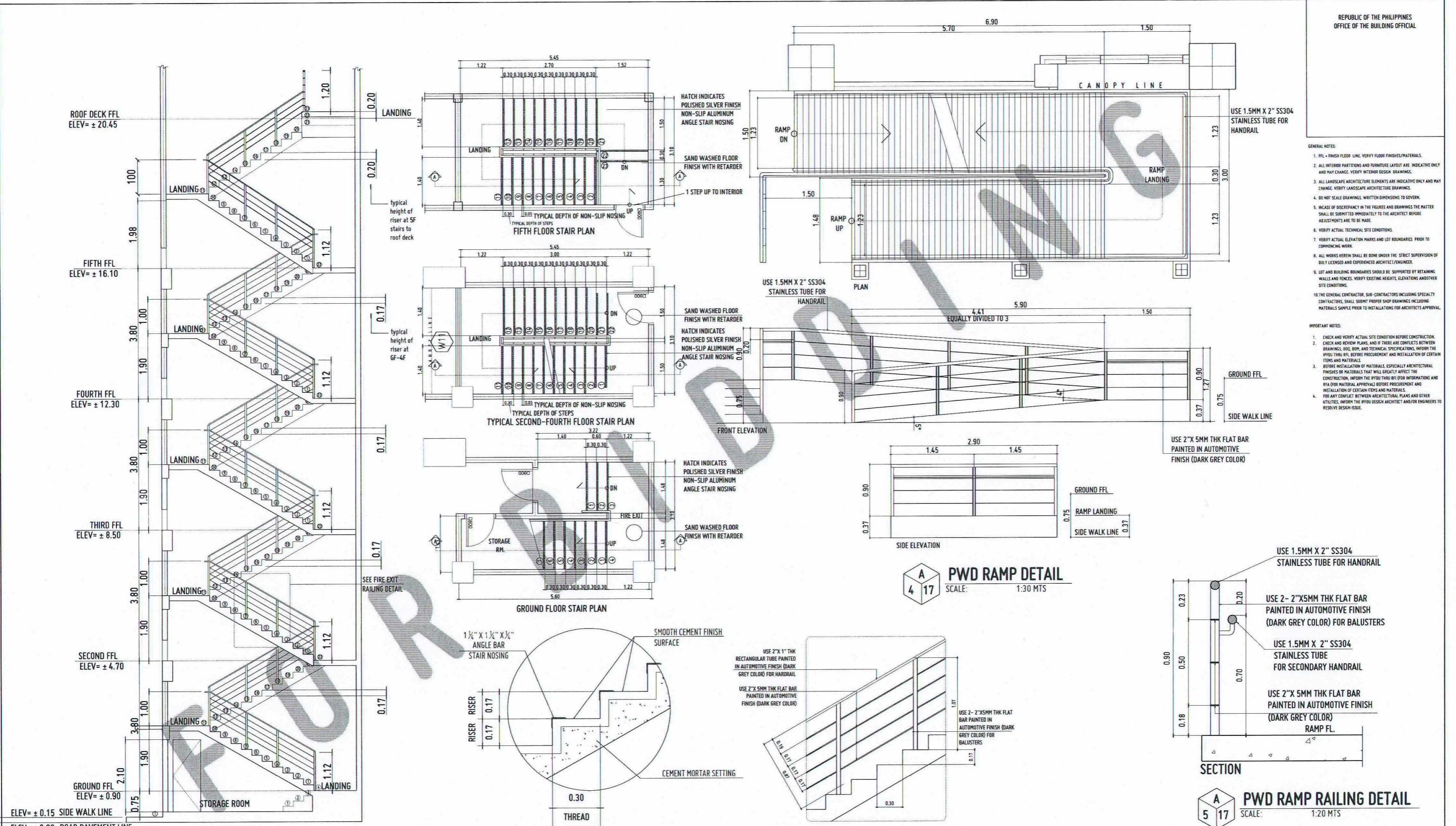
DRAWN BY:
DATE DRAWN:
10.01.2025
FNT:



A15

- GENERAL NOTES:
1. FFL = FINISH FLOOR LINE. VERIFY FLOOR FINISHES/MATERIALS.
 2. ALL INTERIOR PARTITIONS AND FURNITURE LAYOUT ARE INDICATIVE ONLY AND MAY CHANGE. VERIFY INTERIOR DESIGN DRAWINGS.
 3. ALL LANDSCAPE ARCHITECTURE ELEMENTS ARE INDICATIVE ONLY AND MAY CHANGE. VERIFY LANDSCAPE ARCHITECTURE DRAWINGS.
 4. DO NOT SCALE DRAWINGS. WRITTEN DIMENSIONS TO GOVERN.
 5. IN CASE OF DISCREPANCY IN THE FIGURES AND DRAWINGS THE MATTER SHALL BE SUBMITTED IMMEDIATELY TO THE ARCHITECT BEFORE ADJUSTMENTS ARE TO BE MADE.
 6. VERIFY ACTUAL TECHNICAL SITE CONDITIONS.
 7. VERIFY ACTUAL ELEVATION MARKS AND LOT BOUNDARIES PRIOR TO COMMENCING WORK.
 8. ALL WORKS HEREIN SHALL BE DONE UNDER THE STRICT SUPERVISION OF DULY LICENSED AND EXPERIENCED ARCHITECT/ENGINEER.
 9. LOT AND BUILDING BOUNDARIES SHOULD BE SUPPORTED BY RETAINING WALLS AND FENCES. VERIFY EXISTING HEIGHTS, ELEVATIONS AND OTHER SITE CONDITIONS.
 10. THE GENERAL CONTRACTOR, SUB-CONTRACTORS INCLUDING SPECIALTY CONTRACTORS, SHALL SUBMIT PROPER SHOP DRAWINGS INCLUDING MATERIALS SAMPLE PRIOR TO INSTALLATIONS FOR ARCHITECT'S APPROVAL.

- IMPORTANT NOTES:
1. CHECK AND VERIFY ACTUAL SITE CONDITION BEFORE CONSTRUCTION.
 2. CHECK AND REVIEW PLANS, AND IF THERE ARE CONFLICTS BETWEEN DRAWINGS, HSD, BOP, AND TECHNICAL SPECIFICATIONS, INFORM THE PFDD THRU RFI. BEFORE PROCUREMENT AND INSTALLATION OF CERTAIN ITEMS AND MATERIALS.
 3. BEFORE INSTALLATION OF MATERIALS, ESPECIALLY ARCHITECTURAL FINISHES OR MATERIALS THAT WILL GREATLY AFFECT THE CONSTRUCTION, INFORM THE PFDD THRU RFI (FOR INFORMATION) AND RFA (FOR MATERIAL APPROVAL BEFORE PROCUREMENT AND INSTALLATION OF CERTAIN ITEMS AND MATERIALS).
 4. FOR ANY CONFLICT BETWEEN ARCHITECTURAL PLANS AND OTHER UTILITIES, INFORM THE PFDD DESIGN ARCHITECT AND/OR ENGINEERS TO RESOLVE DESIGN ISSUE.



A 1 17 FIRE EXIT STAIR SECTION DETAIL
SCALE: 1:50 MTS

A 2 17 TYPICAL STAIR NOSING DETAIL
SCALE: 1:10 MTS

A 3 17 FIRE EXIT RAILING DETAIL
SCALE: 1:20 MTS

A 5 17 PWD RAMP RAILING DETAIL
SCALE: 1:20 MTS



REPUBLIC OF THE PHILIPPINES
UNIVERSITY OF SCIENCE AND TECHNOLOGY OF SOUTHERN PHILIPPINES
CAGAYAN DE ORO CAMPUS
INFRASTRUCTURE PLANNING AND FACILITY DEVELOPMENT UNIT
CLARO M. RECTO AVENUE, LAPASAN, CAGAYAN DE ORO CITY 9000
TELEPHONE # (08822) 72-60-65 / (088) 856-1738 / 856-1739 | TELE FAX (088) 856-4696
WEBSITE: www.ustp.edu.ph

Ferdinand A. Dumpa
ARCHITECT OF RECORD
PRC NO. 013329 | PRC NO. 659271
DATE 02-10-2026
TIN 185-092-837 | PLACE CAGAYAN DE ORO

PROJECT: PROPOSED CONSTRUCTION OF SMART ACADEMIC BUILDING PHASE 1, JASAAN CAMPUS
LOCATION: USTP JASAAN CAMPUS, MISAMIS ORIENTAL
OWNER: UNIVERSITY OF SCIENCE AND TECHNOLOGY OF SOUTHERN PHILIPPINES

RECOMMENDING APPROVAL:
ENGR. GRACE C. BABA
DIRECTOR, INFRASTRUCTURE PLANNING & FACILITIES DEVELOPMENT OFFICE

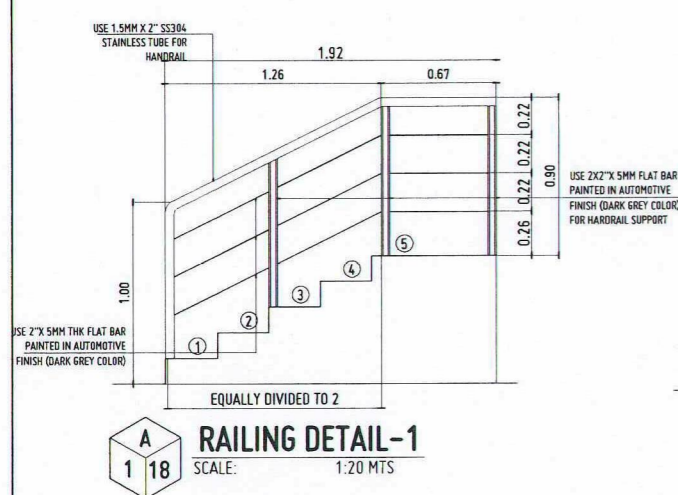
RECOMMENDING APPROVAL:
ATTY. ERWIN B. BUCHS
VP FOR ADMINISTRATION & LEGAL AFFAIRS

APPROVED BY:
DR. AMBROSIO B. CULTURA II
PRESIDENT, USTP SYSTEM

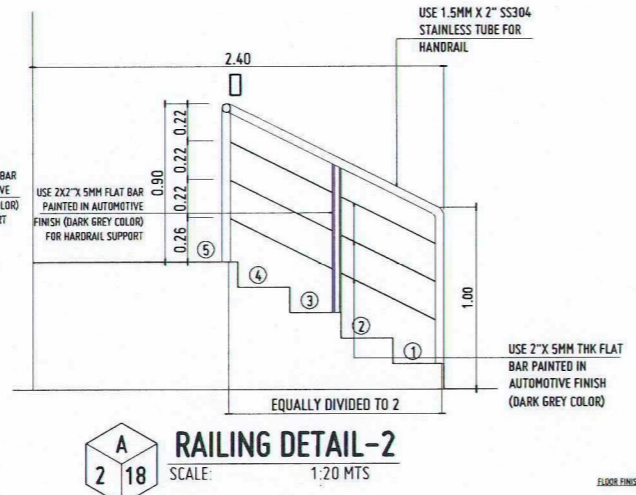
SHEET CONTENTS:
FIRE EXIT STAIR SECTION DETAIL
TYPICAL STAIR NOSING DETAIL
FIRE EXIT RAILING DETAIL
PWD RAMP DETAIL
PWD RAMP RAILING DETAIL

DRAWN BY:
DATE DRAWN:
10.01.2025
PNT:

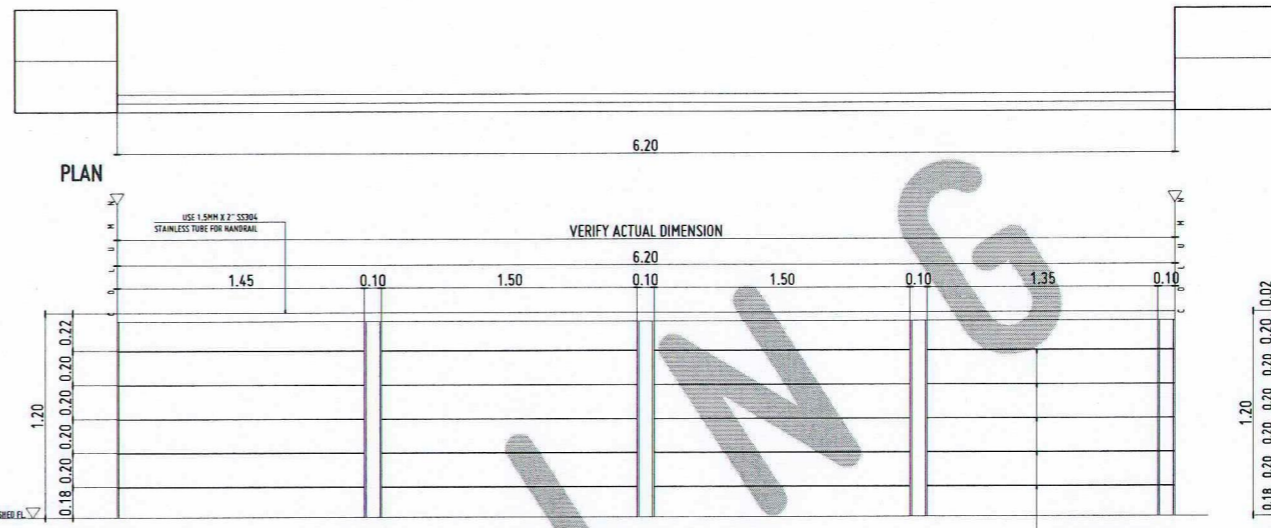
A17



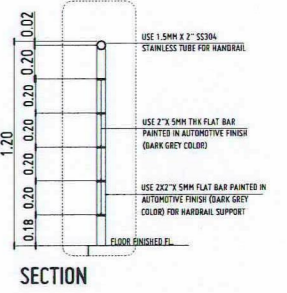
RAILING DETAIL-1
SCALE: 1:20 MTS



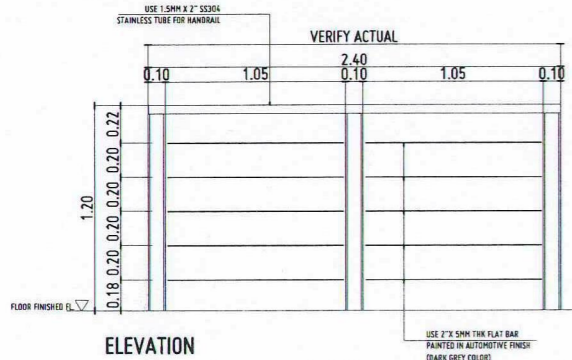
RAILING DETAIL-2
SCALE: 1:20 MTS



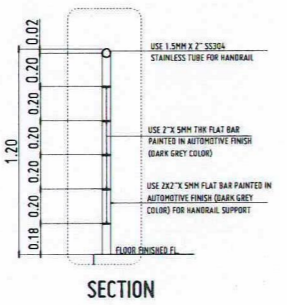
RAILING DETAIL-3
SCALE: 1:20 MTS



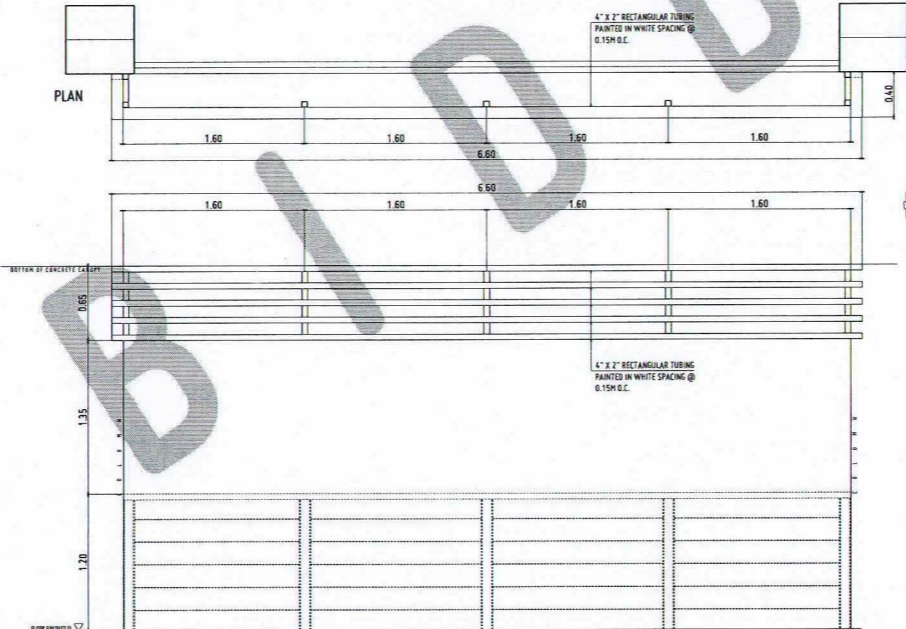
SECTION



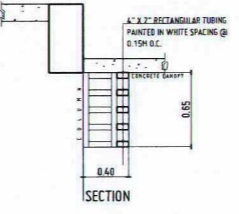
RAILING DETAIL-4
SCALE: 1:20 MTS



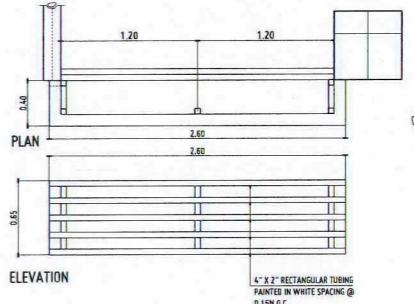
SECTION



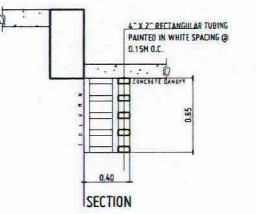
LATTICE DETAIL-1
SCALE: 1:30 MTS



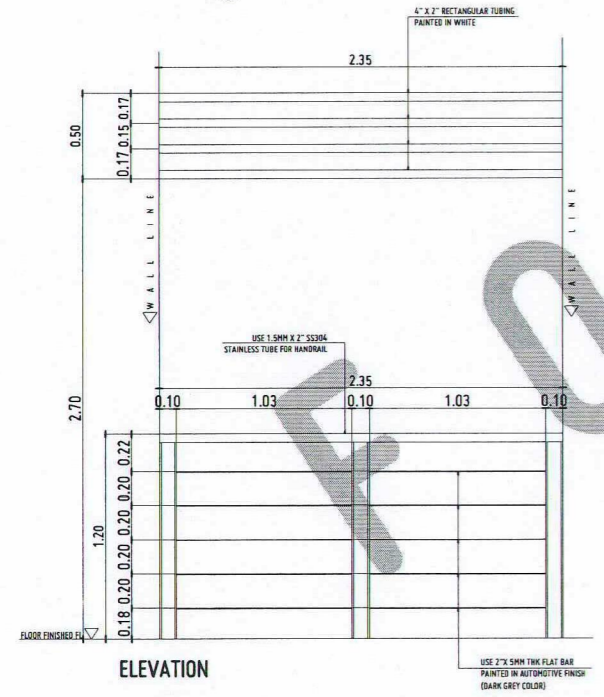
SECTION



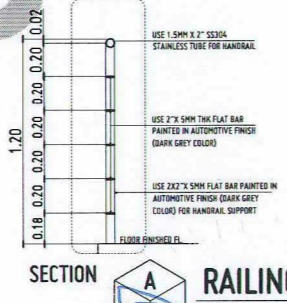
LATTICE DETAIL-2
SCALE: 1:30 MTS



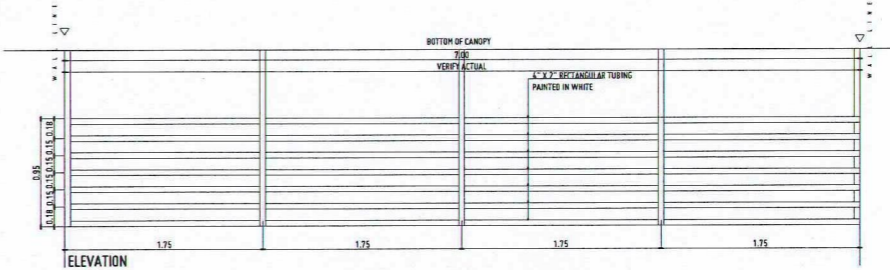
SECTION



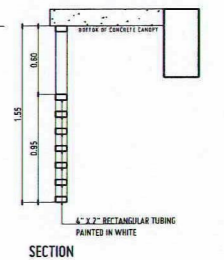
RAILING DETAIL-5
SCALE: 1:20 MTS



SECTION



LATTICE DETAIL-3
SCALE: 1:30 MTS



SECTION



REPUBLIC OF THE PHILIPPINES
UNIVERSITY OF SCIENCE AND TECHNOLOGY OF SOUTHERN PHILIPPINES
CAGAYAN DE ORO CAMPUS
INFRASTRUCTURE PLANNING AND FACILITY DEVELOPMENT UNIT
CLARO M. RECTO AVENUE, LAPASAN, CAGAYAN DE ORO CITY 9000
TELEPHONE # (08822) 72-60-85 / (088) 856-1738 / 856-1739 | TELE FAX (088) 856-4496
WEBSITE: www.ustp.edu.ph

FERDINAND A. DUMPA
ARCHITECT OF RECORD
PRC NO. 013329 PTR NO. 6595271
DATE 02-10-2026
TIN 185-052-837 PLACE CAGAYAN DE ORO

PROPOSED CONSTRUCTION OF SMART ACADEMIC BUILDING
PHASE 1, JASAAN CAMPUS
LOCATION USTP JASAAN CAMPUS, MISAMIS ORIENTAL
OWNER UNIVERSITY OF SCIENCE AND TECHNOLOGY OF SOUTHERN PHILIPPINES

RECOMMENDING APPROVAL:
ENGR. GRACE C. BABA
DIRECTOR, INFRASTRUCTURE PLANNING & FACILITIES DEVELOPMENT OFFICE

RECOMMENDING APPROVAL:
ATTY. ERWIN B. BUCIB
VLCR-ADMINISTRATIVE-Legal Affairs

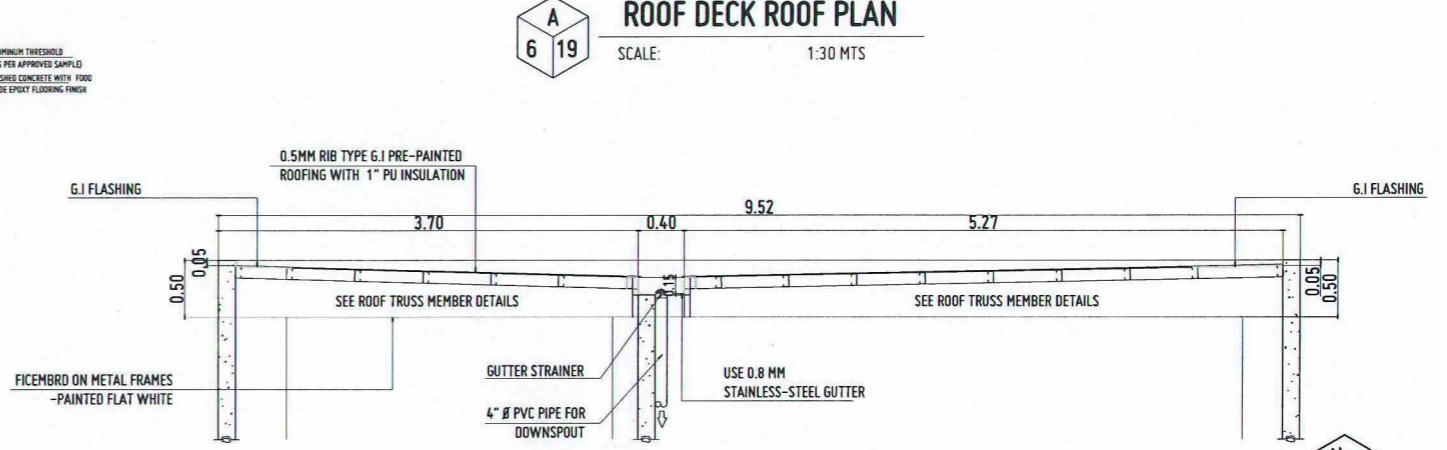
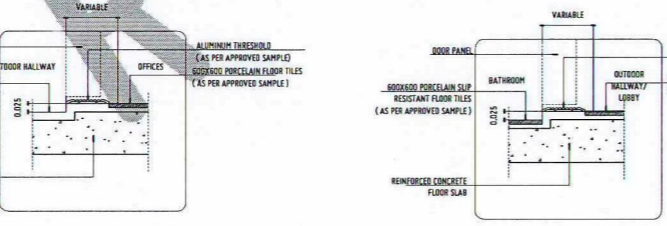
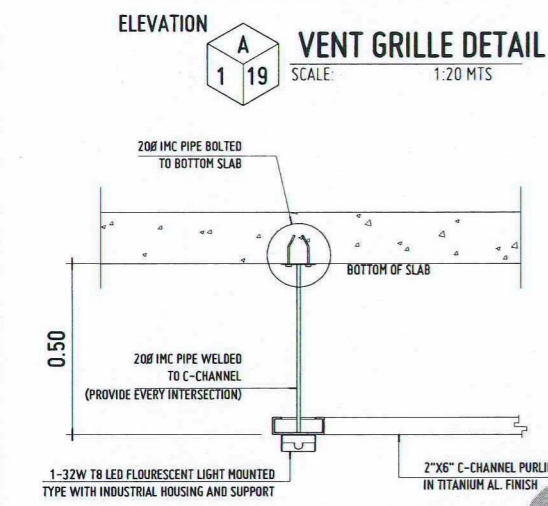
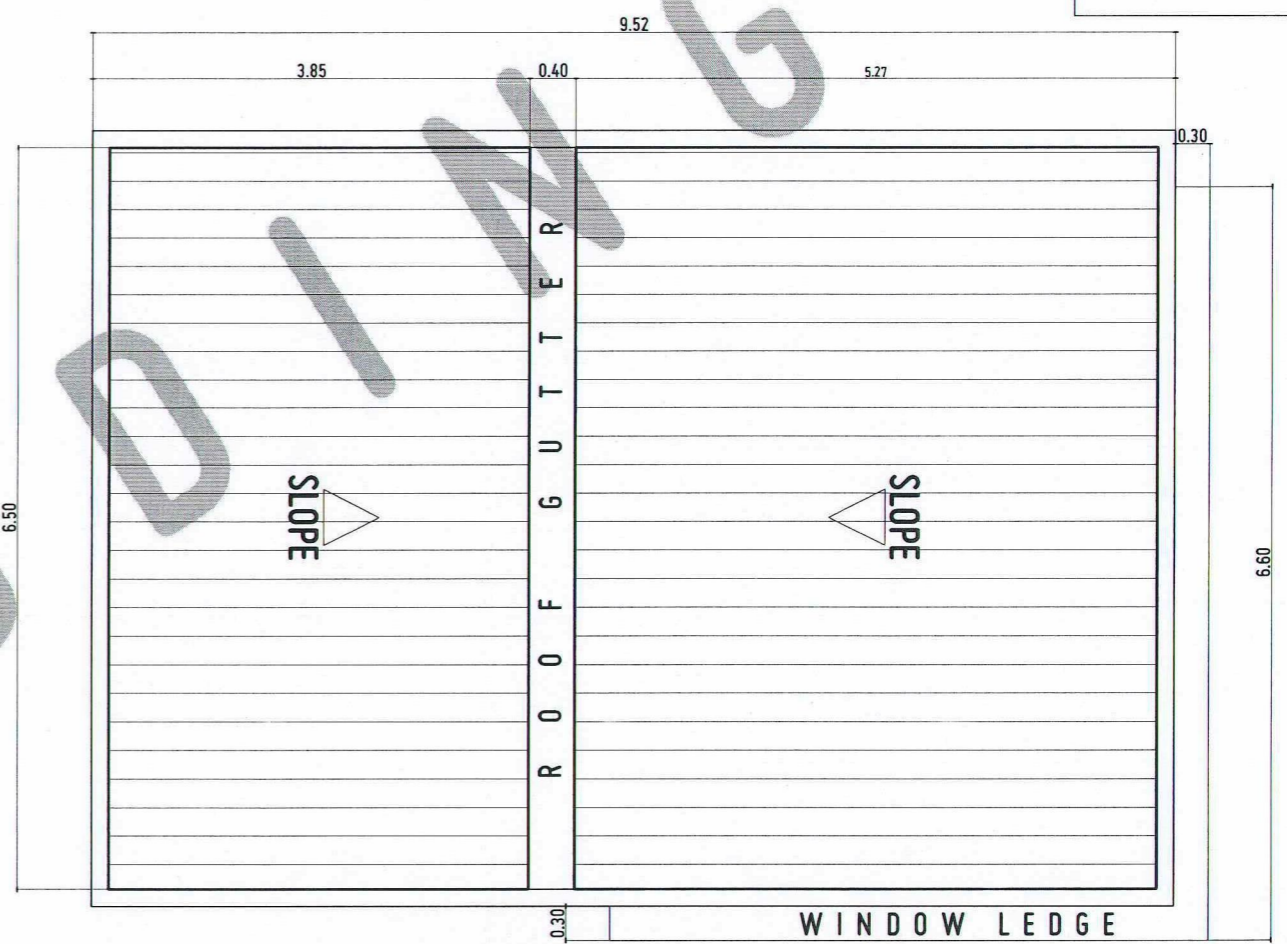
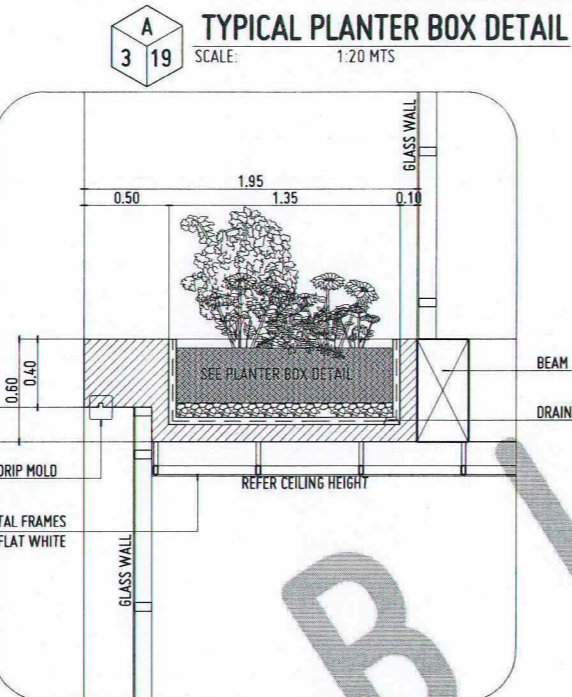
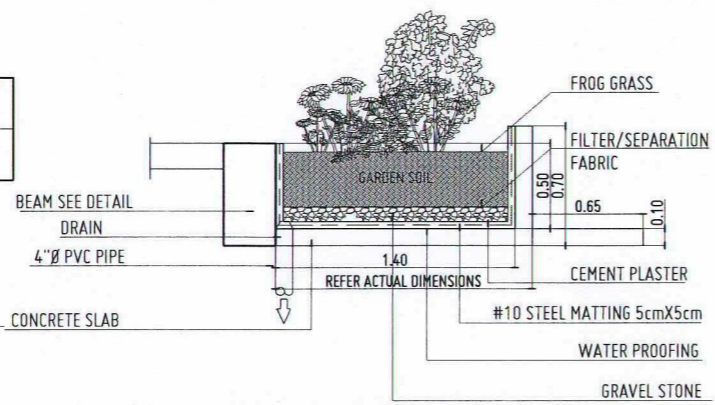
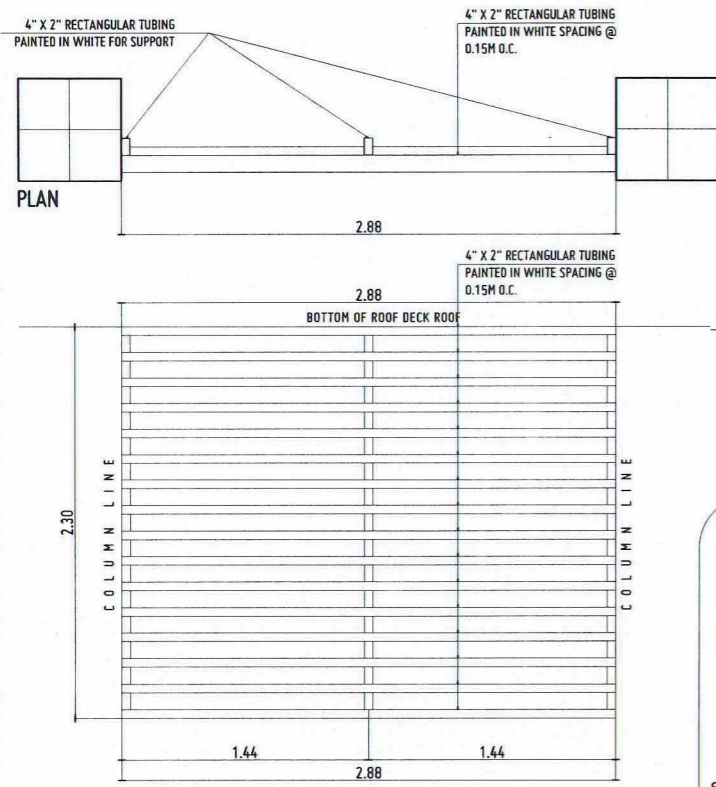
APPROVED BY:
DR. AMBROSIO B. CULTURA II
PRESIDENT, USTP SYSTEM

SHEET CONTENTS:
RAILING AND LATTICE DETAILS

DRAWN BY:
DATE DRAWN:
10.01.2025
PNT:



A18



REPUBLIC OF THE PHILIPPINES
UNIVERSITY OF SCIENCE AND TECHNOLOGY OF SOUTHERN PHILIPPINES
CAGAYAN DE ORO CAMPUS
INFRASTRUCTURE PLANNING AND FACILITY DEVELOPMENT UNIT
CLARO M. RECTO AVENUE, LAPASAN, CAGAYAN DE ORO CITY 9000
TELEPHONE # (08822) 72-60-65 / (088) 856-1739 / 856-1739 | TELE FAX (088) 856-4496
WEBSITE: www.ustp.edu.ph

FERDINAND A. DUMPA
ARCHITECT OF RECORD

PROJECT: PROPOSED CONSTRUCTION OF SMART ACADEMIC BUILDING PHASE 1, JASAAN CAMPUS
LOCATION: USTP JASAAN CAMPUS, MISAMIS ORIENTAL
OWNER: UNIVERSITY OF SCIENCE AND TECHNOLOGY OF SOUTHERN PHILIPPINES

PRC NO. 013325 PTR NO. 6591271
DATE: 02-10-2026
TIN: 185-092-837 PLACE: CAGAYAN DE ORO

RECOMMENDING APPROVAL: ENGR. GRACE C. BABA
DIRECTOR, INFRASTRUCTURE PLANNING & FACILITIES DEVELOPMENT OFFICE

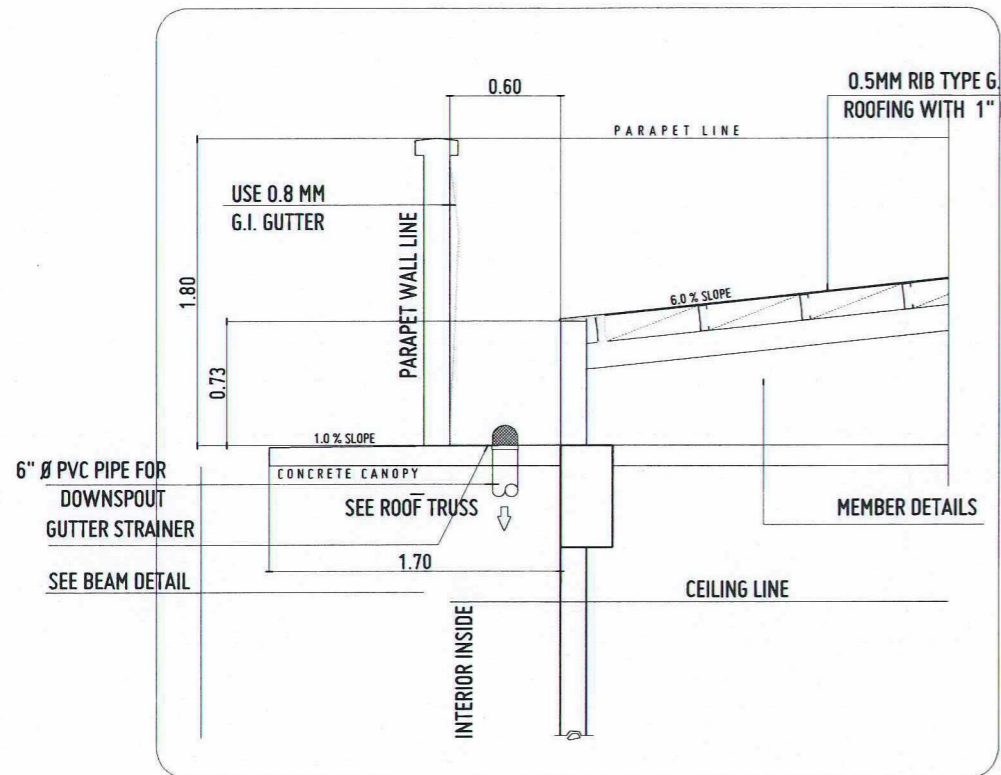
RECOMMENDING APPROVAL: ATTY. ERWIN B. BUCIO
VP FOR ADMINISTRATION & LEGAL AFFAIRS

APPROVED BY: DR. AMBROSIO B. CULTURA II
PRESIDENT, USTP SYSTEM

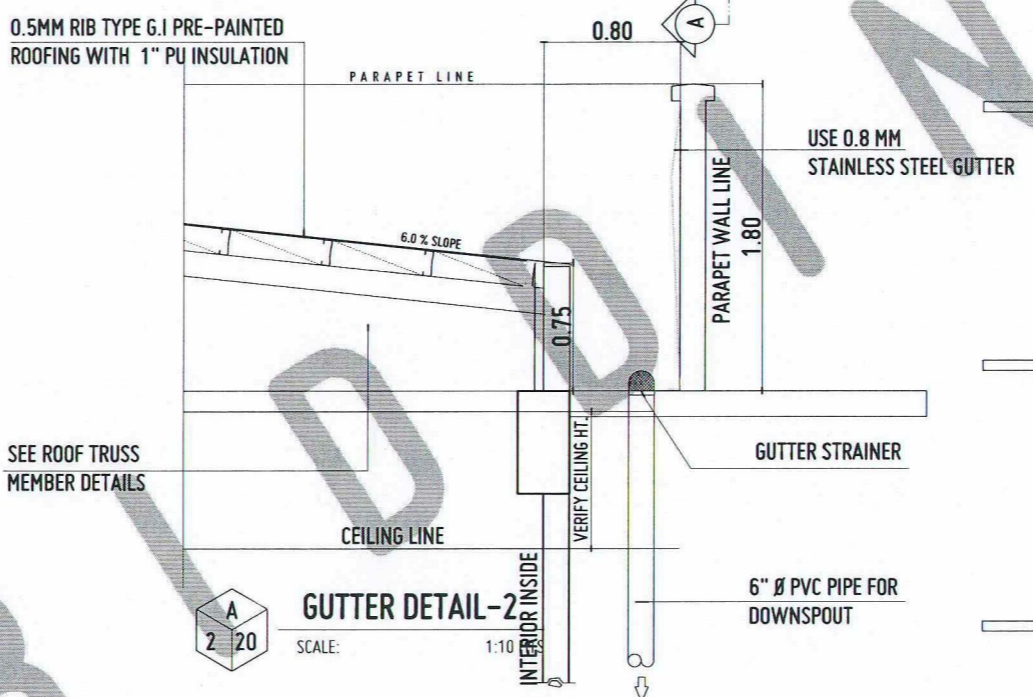
SHEET CONTENTS:
VENT GRILLE DETAIL
DROP LIGHT DETAIL
TYPICAL PLANTER BOX DETAIL
PLANTER BOX DETAIL-2
THRESHOLD DETAIL
ROOF DECK ROOF PLAN
ROOF DECK ROOF SECTION DETAIL

DRAWN BY: [Signature]
DATE DRAWN: 10.01.2025
FNT:

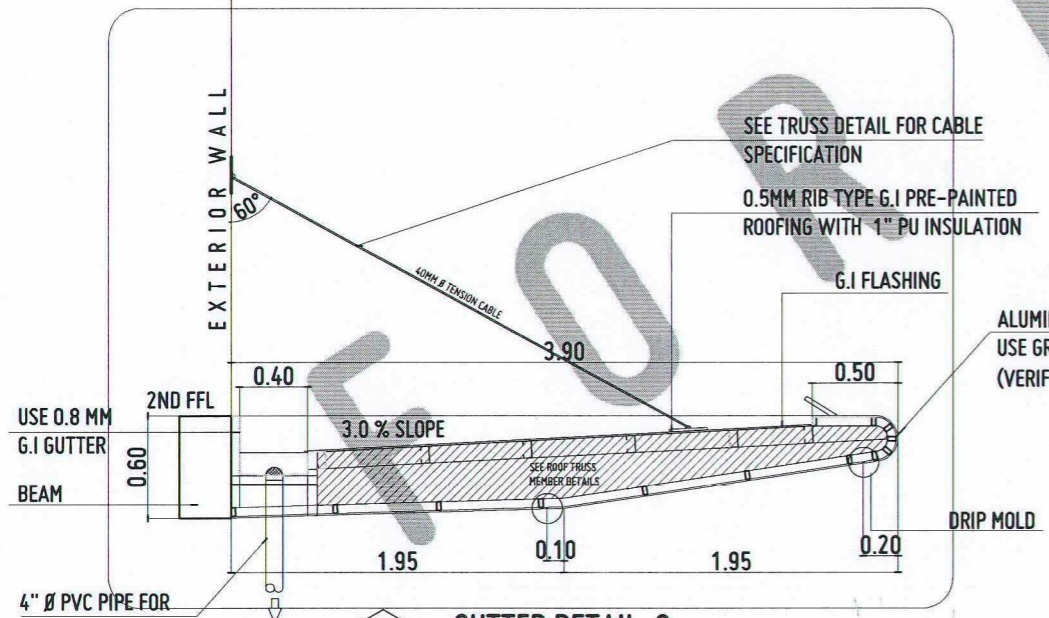
A19



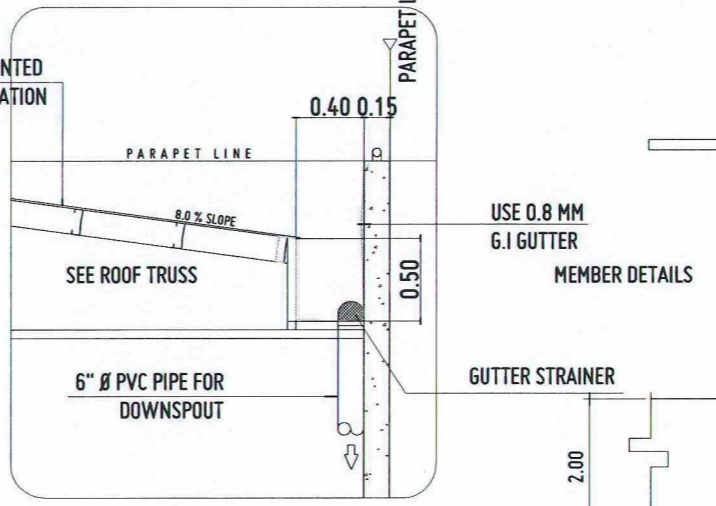
GUTTER DETAIL-1
SCALE: 1:10 MTS



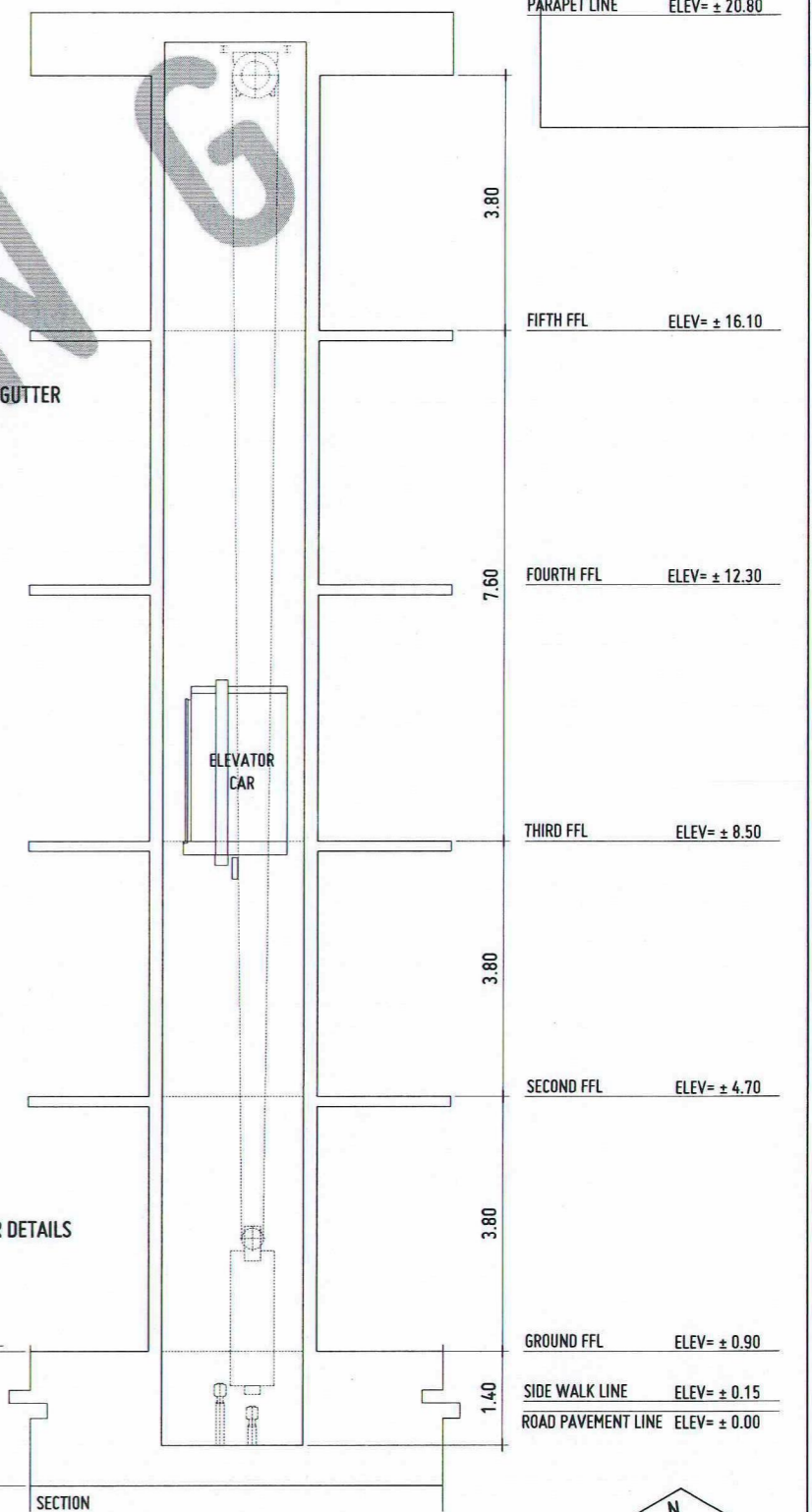
GUTTER DETAIL-2
SCALE: 1:10



GUTTER DETAIL-3
SCALE: 1:10 MTS

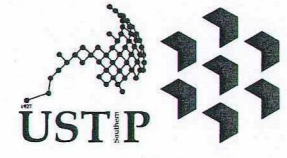


GUTTER DETAIL-4
SCALE: 1:10 MTS



ELEVATOR DETAIL
SCALE: 1:50 MTS

PARAPET LINE	ELEV= ± 20.80
FIFTH FFL	ELEV= ± 16.10
FOURTH FFL	ELEV= ± 12.30
THIRD FFL	ELEV= ± 8.50
SECOND FFL	ELEV= ± 4.70
GROUND FFL	ELEV= ± 0.90
SIDE WALK LINE	ELEV= ± 0.15
ROAD PAVEMENT LINE	ELEV= ± 0.00



REPUBLIC OF THE PHILIPPINES
UNIVERSITY OF SCIENCE AND TECHNOLOGY OF SOUTHERN PHILIPPINES
CAGAYAN DE ORO CAMPUS
INFRASTRUCTURE PLANNING AND FACILITY DEVELOPMENT UNIT
CLARO M. RECTO AVENUE, LAPASAN, CAGAYAN DE ORO CITY 9000
TELEPHONE # (08822) 72-60-65 / (088) 856-1738 / 856-1739 | TELE FAX (088) 856-4898
WEBSITE: www.ustp.edu.ph

FERDINAND A. DUMPA
ARCHITECT OF RECORD
PRC NO. 013329 PFR NO. 658271
DATE 02-10-2026
TIN 185-092-837 PLACE CAGAYAN DE ORO

PROJECT
PROPOSED CONSTRUCTION OF SMART ACADEMIC BUILDING PHASE 1, JASAAN CAMPUS
LOCATION
USTP JASAAN CAMPUS, MISAMIS ORIENTAL
OWNER
UNIVERSITY OF SCIENCE AND TECHNOLOGY OF SOUTHERN PHILIPPINES

RECOMMENDING APPROVAL:
ENGR. GRACE C. BABA
DIRECTOR, INFRASTRUCTURE PLANNING & FACILITIES DEVELOPMENT OFFICE

RECOMMENDING APPROVAL:
ATTY. ERWIN B. BUCIO
VP FOR ADMINISTRATION & LEGAL AFFAIRS

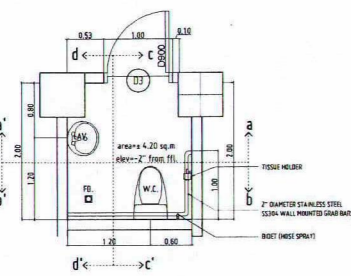
APPROVED BY:
DR. AMBROSIO B. CULTURA II
PRESIDENT, USTP SYSTEM

SHEET CONTENTS:
GUTTER AND ELEVATOR DETAILS

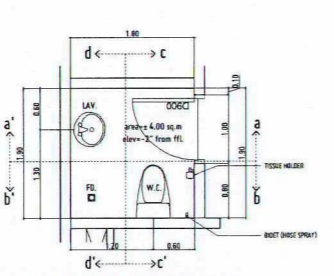
DRAWN BY:
DATE DRAWN:
10.01.2025
FNT:



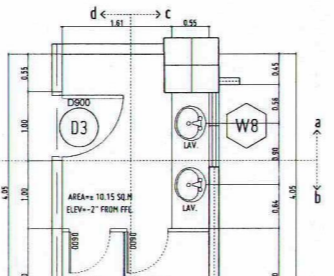
A20



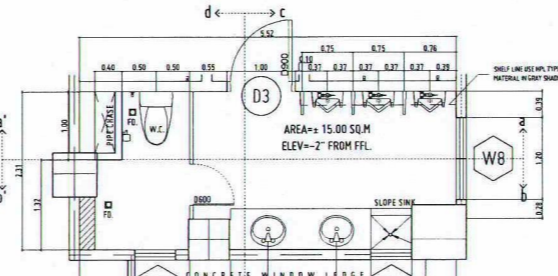
TYPICAL PWD TOILET PLAN



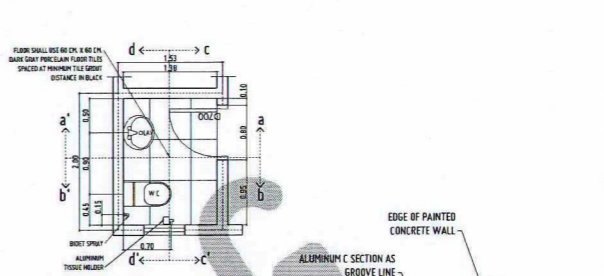
TYPICAL GENDER-NEUTRAL TOILET PLAN



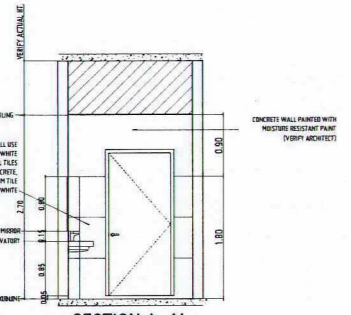
LADIES RESTROOM



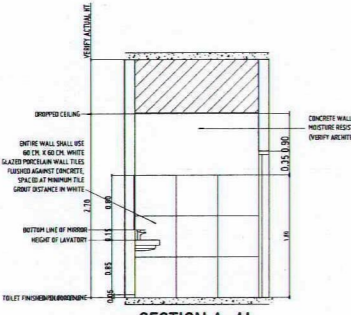
GENTS RESTROOM



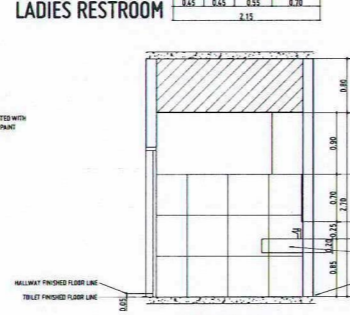
TYPICAL OFFICE TOILET PLAN



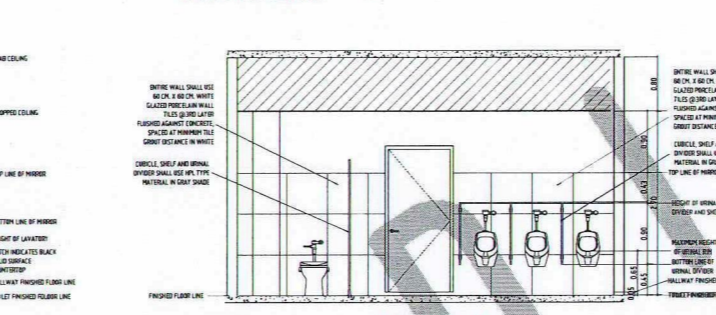
SECTION A-A'



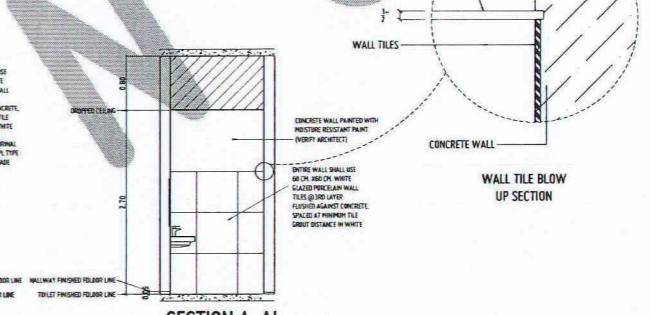
SECTION A-A'



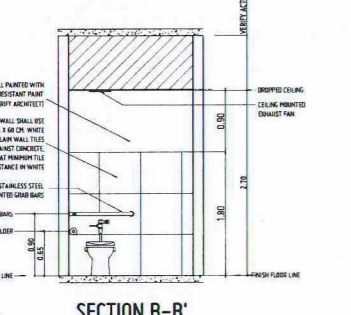
SECTION A-A'



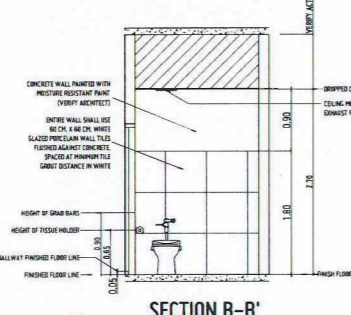
SECTION A-A'



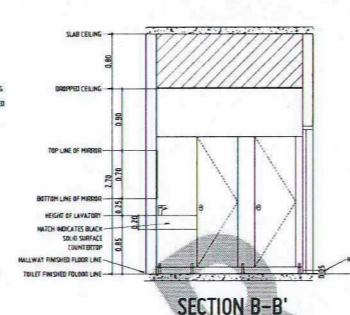
SECTION A-A'



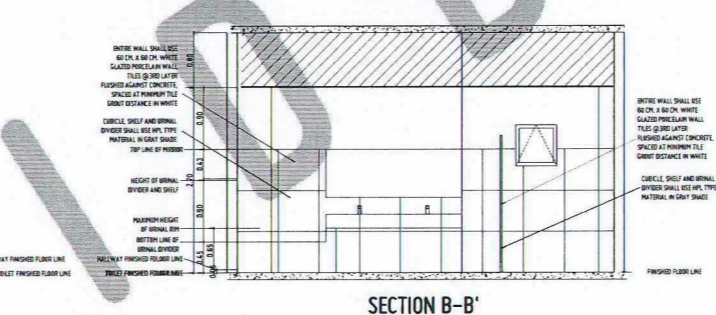
SECTION B-B'



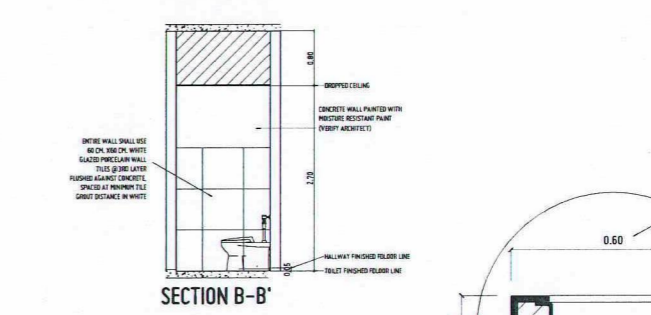
SECTION B-B'



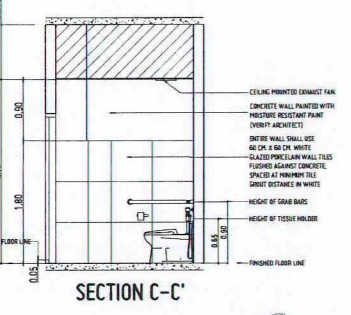
SECTION B-B'



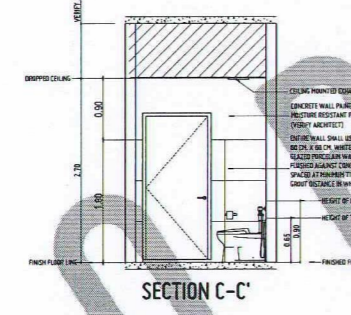
SECTION B-B'



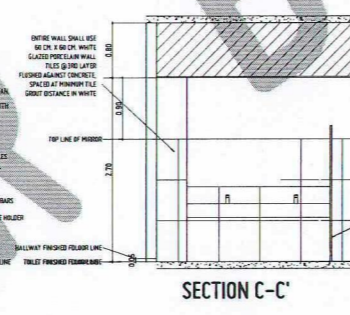
SECTION B-B'



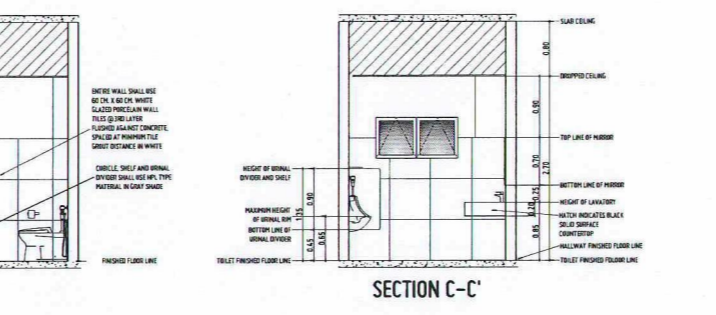
SECTION C-C'



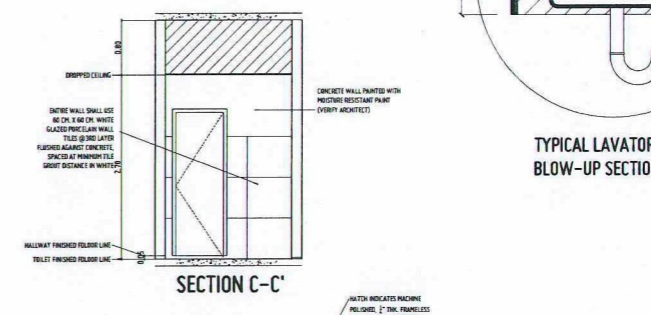
SECTION C-C'



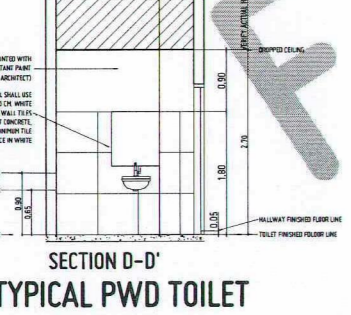
SECTION C-C'



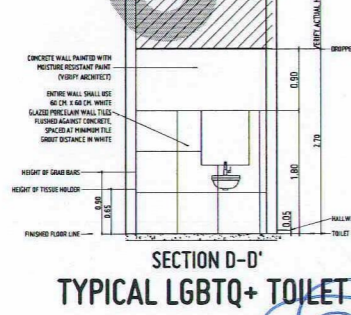
SECTION C-C'



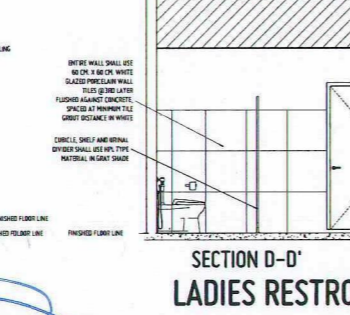
SECTION C-C'



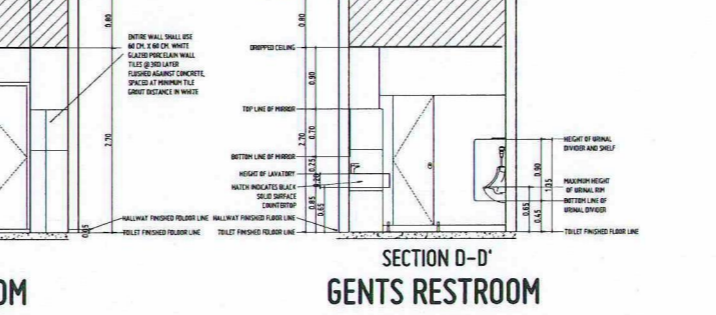
SECTION D-D' TYPICAL PWD TOILET



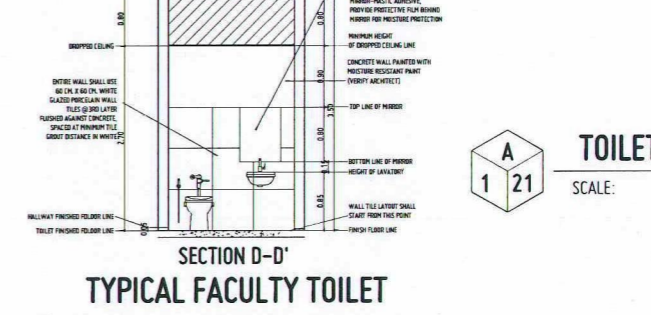
SECTION D-D' TYPICAL LGBTQ+ TOILET



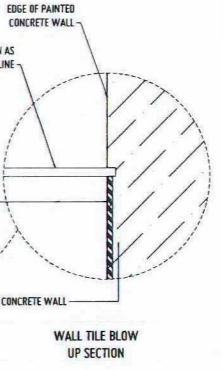
SECTION D-D' LADIES RESTROOM



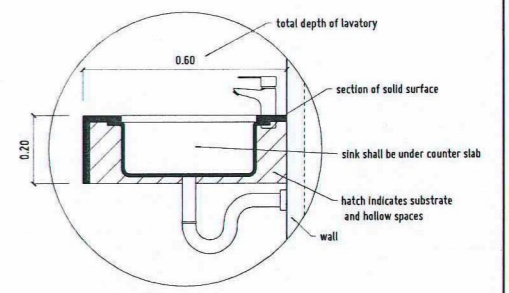
SECTION D-D' GENTS RESTROOM



SECTION D-D' TYPICAL FACULTY TOILET



WALL TILE BLOW UP SECTION



TYPICAL LAVATORY BLOW-UP SECTION

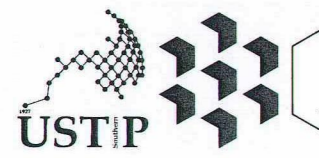
- GENERAL NOTES:
1. FFL = FINISH FLOOR LINE. VERIFY FLOOR FINISHES/MATERIALS.
 2. ALL INTERIOR PARTITIONS AND FURNITURE LAYOUT ARE INDICATIVE ONLY AND MAY CHANGE. VERIFY INTERIOR DESIGN DRAWINGS.
 3. ALL LANDSCAPE ARCHITECTURE ELEMENTS ARE INDICATIVE ONLY AND MAY CHANGE. VERIFY LANDSCAPE ARCHITECTURE DRAWINGS.
 4. DO NOT SCALE DRAWINGS. WRITTEN DIMENSIONS TO GOVERN.
 5. IN CASE OF DISCREPANCY IN THE FIGURES AND DRAWINGS THE MATTER SHALL BE SUBMITTED IMMEDIATELY TO THE ARCHITECT BEFORE ADJUSTMENTS ARE TO BE MADE.
 6. VERIFY ACTUAL TECHNICAL SITE CONDITIONS.
 7. VERIFY ACTUAL ELEVATION MARKS AND LOT BOUNDARIES PRIOR TO COMMENCING WORK.
 8. ALL WORKS HEREIN SHALL BE DONE UNDER THE STRICT SUPERVISION OF DULY LICENSED AND EXPERIENCED ARCHITECT/ENGINEER.
 9. LET AND BUILDING BOUNDARIES SHOULD BE SUPPORTED BY RETAINING WALLS AND FENCES. VERIFY EXISTING HEIGHTS, ELEVATIONS AND OTHER SITE CONDITIONS.
 10. THE GENERAL CONTRACTOR, SUB-CONTRACTORS INCLUDING SPECIALTY CONTRACTORS, SHALL SUBMIT PROPER SHOP DRAWINGS INCLUDING MATERIALS SAMPLE PRIOR TO INSTALLATIONS FOR ARCHITECT'S APPROVAL.
- IMPORTANT NOTES:
1. CHECK AND VERIFY ACTUAL SITE CONDITION BEFORE CONSTRUCTION.
 2. CHECK AND REVIEW PLANS, AND IF THERE ARE CONFLICTS BETWEEN DRAWINGS, BID, BOM, AND TECHNICAL SPECIFICATIONS, NOTIFY THE UPDOR THRU BFL BEFORE PROCUREMENT AND INSTALLATION OF CERTAIN ITEMS AND MATERIALS.
 3. BEFORE INSTALLATION OF MATERIALS, ESPECIALLY ARCHITECTURAL FINISHES OR MATERIALS THAT WILL GREATLY AFFECT THE CONSTRUCTION, NOTIFY THE UPDOR THRU BFL FOR INFORMATION AND SPA (FOR MATERIAL APPROVAL) BEFORE PROCUREMENT AND INSTALLATION OF CERTAIN ITEMS AND MATERIALS.
 4. FOR ANY CONFLICT BETWEEN ARCHITECTURAL PLANS AND OTHER UTILITIES, NOTIFY THE UPDOR DESIGN ARCHITECT AND/OR ENGINEERS TO RESOLVE DESIGN ISSUE.

A
1 21

TOILET DETAILS
SCALE: 1:50 MTS



A21



REPUBLIC OF THE PHILIPPINES
UNIVERSITY OF SCIENCE AND TECHNOLOGY OF SOUTHERN PHILIPPINES
CAGAYAN DE ORO CAMPUS
INFRASTRUCTURE PLANNING AND FACILITY DEVELOPMENT UNIT
CLARDO M. RECTO AVENUE, LAFASAN, CAGAYAN DE ORO CITY 9000
TELEPHONE # (0822) 72-40-45 / (082) 856-1738 / 856-1739 | TELE FAX (082) 856-4696
WEBSITE: www.ustp.edu.ph

FERDINAND A. DUMPA
ARCHITECT OF RECORD
PRC NO. 113879 PDP NO. 6589271
DATE 02-10-2026
TIN 185-052-8371 PLACE CAGAYAN DE ORO

PROPOSED CONSTRUCTION OF SMART ACADEMIC BUILDING
PHASE 1, JASAAN CAMPUS
LOCATION USTP JASAAN CAMPUS, MISAMIS ORIENTAL
OWNER UNIVERSITY OF SCIENCE AND TECHNOLOGY OF SOUTHERN PHILIPPINES

RECOMMENDING APPROVAL:
ENGR. GRACE C. BABA
DIRECTOR, INFRASTRUCTURE PLANNING & FACILITIES DEVELOPMENT OFFICE

RECOMMENDING APPROVAL:
ATTY. ERWIN B. BYCIO
VP FOR ADMINISTRATION & LEGAL AFFAIRS

APPROVED BY:
DR. AMBRONIO B. CULTURA II
PRESIDENT, USTP SYSTEM

SHEET CONTENTS:
TOILET DETAILS

DRAWN BY:
DATE DRAWN:
10.01.2025
FNT: