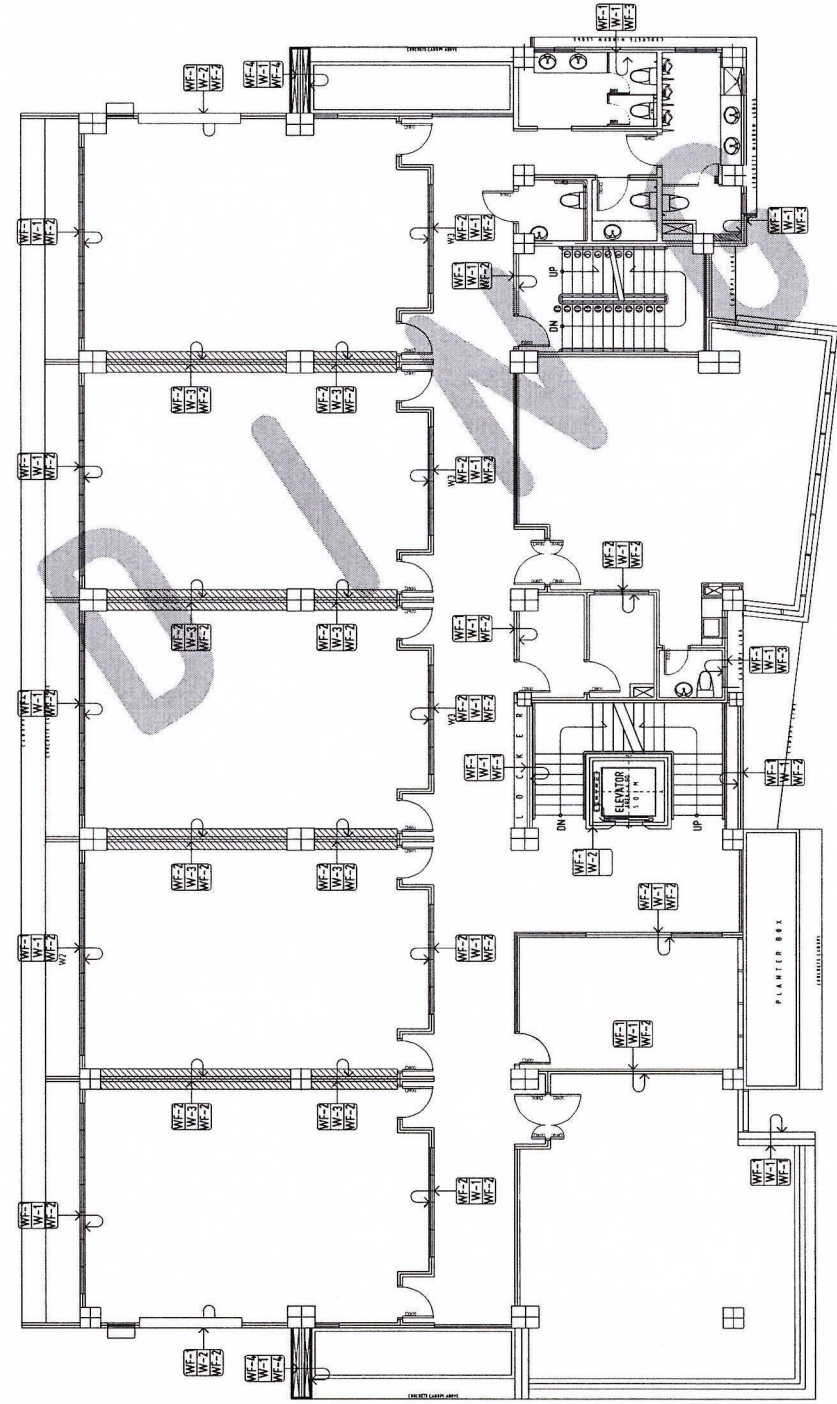


THIRD FLOOR PLAN - WALL FINISHES

SCALE: 1:100 MTS



FOURTH FLOOR PLAN - WALL FINISHES

SCALE: 1:100 MTS



GENERAL NOTES:

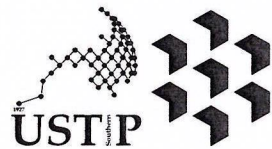
1. FFL = FINISH FLOOR LINE. VERIFY FLOOR FINISHES/MATERIALS.
2. ALL INTERIOR PARTITIONS AND PLUMBING LAYOUT ARE INDICATIVE ONLY AND MAY CHANGE. VERIFY INTERIOR DESIGN DRAWINGS.
3. ALL LANDSCAPE ARCHITECTURE ELEMENTS ARE INDICATIVE ONLY AND MAY CHANGE. VERIFY LANDSCAPE ARCHITECTURE DRAWINGS.
4. DO NOT SCALE DRAWINGS. WRITTEN DIMENSIONS TO GOVERN.
5. IN CASE OF DISCREPANCY IN THE FIGURES AND DRAWINGS THE MATTER SHALL BE SUBMITTED IMMEDIATELY TO THE ARCHITECT BEFORE ADJUSTMENTS ARE TO BE MADE.
6. VERIFY ACTUAL TECHNICAL SITE CONDITIONS.
7. VERIFY ACTUAL ELEVATION MARKS AND LOT BOUNDARIES PRIOR TO COMMENCING WORK.
8. ALL WORKS HEREIN SHALL BE DONE UNDER THE STRICT SUPERVISION OF DULY LICENSED AND EXPERIENCED ARCHITECT/ENGINEER.
9. LOT AND BUILDING BOUNDARIES SHOULD BE SUPPORTED BY RETAINING WALLS AND FENCES. VERIFY EXISTING HEIGHTS, ELEVATIONS AND OTHER SITE CONDITIONS.
10. THE GENERAL CONTRACTOR, SUB-CONTRACTORS INCLUDING SPECIALTY CONTRACTORS, SHALL SUBMIT PROPER SHOP DRAWINGS INCLUDING MATERIALS SAMPLE PRIOR TO INSTALLATIONS FOR ARCHITECT'S APPROVAL.

IMPORTANT NOTES:

1. CHECK AND VERIFY ACTUAL SITE CONDITION BEFORE CONSTRUCTION. CHECK AND REVIEW PLANS, AND IF THERE ARE CONFLICTS BETWEEN DRAWINGS, BOQ, BOB, AND TECHNICAL SPECIFICATIONS, INFORM THE PFO/THRO/RI. BEFORE PROCUREMENT AND INSTALLATION OF CERTAIN ITEMS AND MATERIALS.
2. BEFORE INSTALLATION OF MATERIALS, ESPECIALLY ARCHITECTURAL FINISHES OR MATERIALS THAT WILL GREATLY AFFECT THE CONSTRUCTION, INFORM THE PFO/THRO/RI (FOR INFORMATION) AND RFA (FOR MATERIAL APPROVAL) BEFORE PROCUREMENT AND INSTALLATION OF CERTAIN ITEMS AND MATERIALS.
3. FOR ANY CONFLICT BETWEEN ARCHITECTURAL PLANS AND OTHER UTILITIES, INFORM THE PFO/THRO/RI AND/OR ENGINEERS TO RESOLVE DESIGN ISSUE.

WALL FINISHES	
MARK	DESCRIPTION
WF-1	PLAIN CEILING PLASTER (EMERALD FINISH), PLASTER ON STUDS, 12.5MM THICK. INTERIOR WALLS, PAINT IN INTERIOR. WHITE COLOR EXTERIOR.
WF-2	PLAIN CEILING PLASTER (EMERALD FINISH), PLASTER ON STUDS, 12.5MM THICK. INTERIOR WALLS, PAINT IN INTERIOR. WHITE COLOR EXTERIOR.
WF-3	PLAIN CEILING PLASTER (EMERALD FINISH), PLASTER ON STUDS, 12.5MM THICK. INTERIOR WALLS, PAINT IN INTERIOR. WHITE COLOR EXTERIOR.
WF-4	PLAIN CEILING PLASTER (EMERALD FINISH), PLASTER ON STUDS, 12.5MM THICK. INTERIOR WALLS, PAINT IN INTERIOR. WHITE COLOR EXTERIOR.

WALL FINISHES	
MARK	DESCRIPTION
WF-1	PLAIN CEILING PLASTER (EMERALD FINISH), PLASTER ON STUDS, 12.5MM THICK. INTERIOR WALLS, PAINT IN INTERIOR. WHITE COLOR EXTERIOR.
WF-2	PLAIN CEILING PLASTER (EMERALD FINISH), PLASTER ON STUDS, 12.5MM THICK. INTERIOR WALLS, PAINT IN INTERIOR. WHITE COLOR EXTERIOR.
WF-3	PLAIN CEILING PLASTER (EMERALD FINISH), PLASTER ON STUDS, 12.5MM THICK. INTERIOR WALLS, PAINT IN INTERIOR. WHITE COLOR EXTERIOR.
WF-4	PLAIN CEILING PLASTER (EMERALD FINISH), PLASTER ON STUDS, 12.5MM THICK. INTERIOR WALLS, PAINT IN INTERIOR. WHITE COLOR EXTERIOR.



REPUBLIC OF THE PHILIPPINES
UNIVERSITY OF SCIENCE AND TECHNOLOGY OF SOUTHERN PHILIPPINES
CAGAYAN DE ORO CAMPUS
INFRASTRUCTURE PLANNING AND FACILITY DEVELOPMENT UNIT
CLARO M. RECTO AVENUE, LAPASAN, CAGAYAN DE ORO CITY 9000
TELEPHONE # (08822) 72-60-65 / (088) 856-1736 / 856-1739 | TELE FAX (088) 856-4566
WEBSITE: www.ustp.edu.ph

FERNAND A. BUNPA
ARCHITECT OF RECORD
PRC NO. 013329 PTR NO. 6599271
DATE 02-10-2026
TIN 185-092-837 PLACE CAGAYAN DE ORO

PROJECT: PROPOSED CONSTRUCTION OF SMART ACADEMIC BUILDING PHASE 1, JASAAN CAMPUS
LOCATION: USTP JASAAN CAMPUS, MISAMIS ORIENTAL
OWNER: UNIVERSITY OF SCIENCE AND TECHNOLOGY OF SOUTHERN PHILIPPINES

RECOMMENDING APPROVAL:
ENGR. GRACE C. BABA
DIRECTOR, INFRASTRUCTURE PLANNING & FACILITIES DEVELOPMENT OFFICE

RECOMMENDING APPROVAL:
ATTY. ERWIN B. BUICOG
VP FOR ADMINISTRATION & LEGAL AFFAIRS

APPROVED BY:
DR. AMBROSIO B. CULTURA II
PRESIDENT, USTP SYSTEM

SHEET CONTENTS:
THIRD AND FOURTH WALL FINISHES

DRAWN BY:
DATE DRAWN:
10.01.2025
FNT:



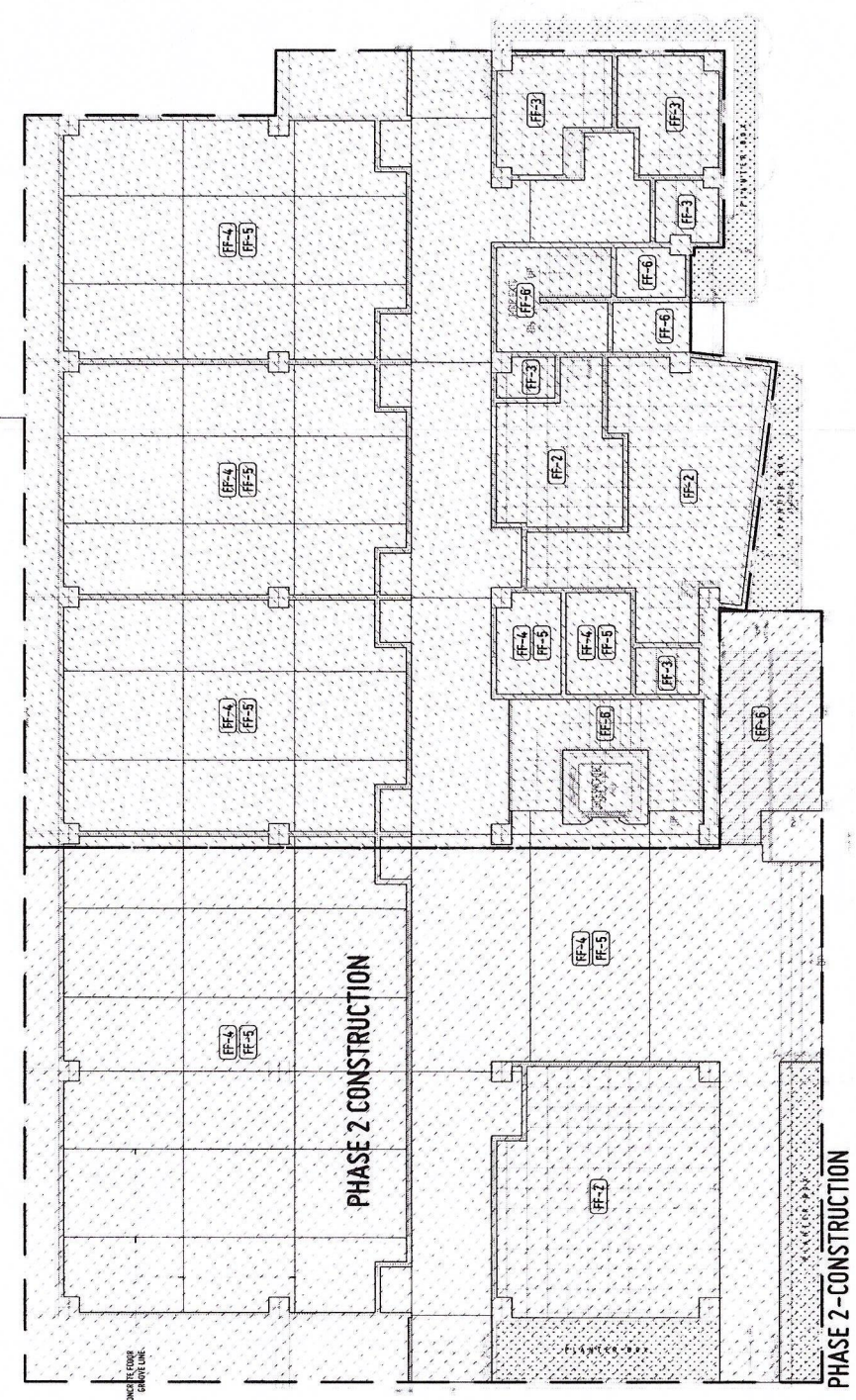
A10

APPROVED BY:

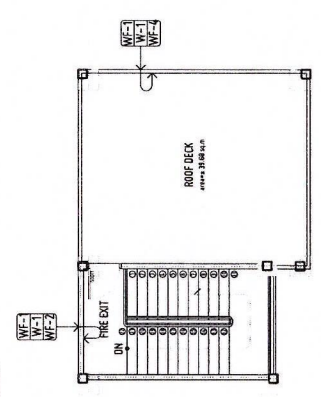
- GENERAL NOTES:
- FFL - FINISH FLOOR LINE. VERIFY FLOOR FINISHES/MATERIALS.
 - ALL INTERIOR PARTITIONS AND FURNITURE LAYOUT ARE INDICATIVE ONLY AND MAY CHANGE. VERIFY INTERIOR DESIGN DRAWINGS.
 - ALL LANDSCAPE ARCHITECTURE ELEMENTS ARE INDICATIVE ONLY AND MAY CHANGE. VERIFY LANDSCAPE ARCHITECTURE DRAWINGS.
 - DO NOT SCALE DRAWINGS. WRITTEN DIMENSIONS TO GOVERN.
 - IN CASE OF DISCREPANCY IN THE FIGURES AND DRAWINGS THE MATTER SHALL BE SUBMITTED IMMEDIATELY TO THE ARCHITECT BEFORE ADJUSTMENTS ARE TO BE MADE.
 - VERIFY ACTUAL TECHNICAL SITE CONDITIONS.
 - VERIFY ACTUAL ELEVATION MARKS AND LOT BOUNDARIES PRIOR TO COMMENCING WORK.
 - ALL WORKS HEREIN SHALL BE DONE UNDER THE STRICT SUPERVISION OF ONLY LICENSED AND EXPERIENCED ARCHITECT/ENGINEER.
 - LOT AND BUILDING BOUNDARIES SHOULD BE SUPPORTED BY RETAINING WALLS AND FENCES. VERIFY EXISTING HEIGHTS, ELEVATIONS AND OTHER SITE CONDITIONS.
 - THE GENERAL CONTRACTOR, SUB-CONTRACTORS INCLUDING SPECIALTY CONTRACTORS, SHALL SUBMIT PROPER SHOP DRAWINGS INCLUDING MATERIALS SAMPLE PRIOR TO INSTALLATIONS FOR ARCHITECT'S APPROVAL.

- IMPORTANT NOTES:
- CHECK AND VERIFY ACTUAL SITE CONDITION BEFORE CONSTRUCTION. CHECK AND REVIEW PLANS, AND IF THERE ARE CONFLICTS BETWEEN DRAWINGS, FOR FORM AND TECHNICAL SPECIFICATIONS, INFORM THE IPFUD THRU XPL BEFORE PROCUREMENT AND INSTALLATION OF CERTAIN ITEMS AND MATERIALS.
 - BEFORE INSTALLATION OF MATERIALS, ESPECIALLY ARCHITECTURAL FINISHES OR MATERIALS THAT WILL GREATLY AFFECT THE CONSTRUCTION, INFORM THE IPFUD THRU XPL FOR INFORMATION AND FOR FURTHER MATERIAL APPROVALS BEFORE PROCUREMENT AND INSTALLATION OF CERTAIN ITEMS AND MATERIALS.
 - FOR ANY CONFLICT BETWEEN ARCHITECTURAL PLANS AND OTHER UTILITIES, INFORM THE IPFUD DESIGN ARCHITECT AND/OR ENGINEERS TO RESOLVE DESIGN ISSUE.

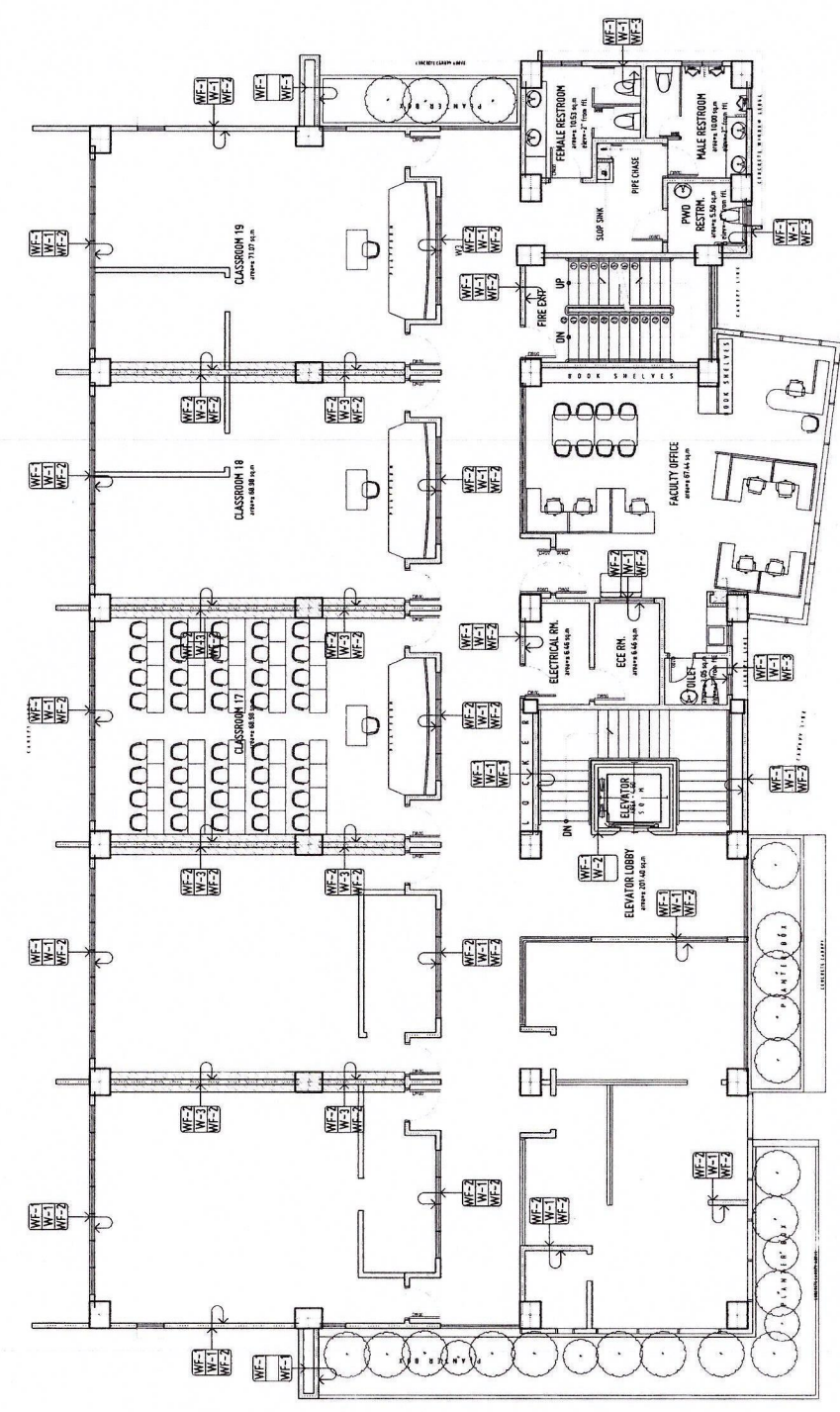
GROUND FLOOR PLAN - FLOOR FINISHES
SCALE: 1:100 MTS



ROOF DECK PLAN
SCALE: 1:100 MTS

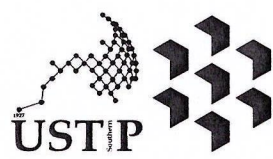


FIFTH FLOOR PLAN - WALL FINISHES
SCALE: 1:100 MTS



WALL FINISHES	
MARK	DESCRIPTION
WF-1	150MM THK. GIB PERIMETER & INTERIOR PARTITION WALLS
WF-2	150MM THK. GIB PERIMETER & INTERIOR PARTITION WALLS
WF-3	150MM THK. GIB PERIMETER & INTERIOR PARTITION WALLS
WF-4	150MM THK. GIB PERIMETER & INTERIOR PARTITION WALLS
WF-5	150MM THK. GIB PERIMETER & INTERIOR PARTITION WALLS
WF-6	150MM THK. GIB PERIMETER & INTERIOR PARTITION WALLS
WF-7	150MM THK. GIB PERIMETER & INTERIOR PARTITION WALLS
WF-8	150MM THK. GIB PERIMETER & INTERIOR PARTITION WALLS
WF-9	150MM THK. GIB PERIMETER & INTERIOR PARTITION WALLS
WF-10	150MM THK. GIB PERIMETER & INTERIOR PARTITION WALLS
WF-11	150MM THK. GIB PERIMETER & INTERIOR PARTITION WALLS
WF-12	150MM THK. GIB PERIMETER & INTERIOR PARTITION WALLS
WF-13	150MM THK. GIB PERIMETER & INTERIOR PARTITION WALLS
WF-14	150MM THK. GIB PERIMETER & INTERIOR PARTITION WALLS
WF-15	150MM THK. GIB PERIMETER & INTERIOR PARTITION WALLS
WF-16	150MM THK. GIB PERIMETER & INTERIOR PARTITION WALLS
WF-17	150MM THK. GIB PERIMETER & INTERIOR PARTITION WALLS
WF-18	150MM THK. GIB PERIMETER & INTERIOR PARTITION WALLS
WF-19	150MM THK. GIB PERIMETER & INTERIOR PARTITION WALLS
WF-20	150MM THK. GIB PERIMETER & INTERIOR PARTITION WALLS
WF-21	150MM THK. GIB PERIMETER & INTERIOR PARTITION WALLS
WF-22	150MM THK. GIB PERIMETER & INTERIOR PARTITION WALLS
WF-23	150MM THK. GIB PERIMETER & INTERIOR PARTITION WALLS
WF-24	150MM THK. GIB PERIMETER & INTERIOR PARTITION WALLS
WF-25	150MM THK. GIB PERIMETER & INTERIOR PARTITION WALLS
WF-26	150MM THK. GIB PERIMETER & INTERIOR PARTITION WALLS
WF-27	150MM THK. GIB PERIMETER & INTERIOR PARTITION WALLS
WF-28	150MM THK. GIB PERIMETER & INTERIOR PARTITION WALLS
WF-29	150MM THK. GIB PERIMETER & INTERIOR PARTITION WALLS
WF-30	150MM THK. GIB PERIMETER & INTERIOR PARTITION WALLS
WF-31	150MM THK. GIB PERIMETER & INTERIOR PARTITION WALLS
WF-32	150MM THK. GIB PERIMETER & INTERIOR PARTITION WALLS
WF-33	150MM THK. GIB PERIMETER & INTERIOR PARTITION WALLS
WF-34	150MM THK. GIB PERIMETER & INTERIOR PARTITION WALLS
WF-35	150MM THK. GIB PERIMETER & INTERIOR PARTITION WALLS
WF-36	150MM THK. GIB PERIMETER & INTERIOR PARTITION WALLS
WF-37	150MM THK. GIB PERIMETER & INTERIOR PARTITION WALLS
WF-38	150MM THK. GIB PERIMETER & INTERIOR PARTITION WALLS
WF-39	150MM THK. GIB PERIMETER & INTERIOR PARTITION WALLS
WF-40	150MM THK. GIB PERIMETER & INTERIOR PARTITION WALLS
WF-41	150MM THK. GIB PERIMETER & INTERIOR PARTITION WALLS
WF-42	150MM THK. GIB PERIMETER & INTERIOR PARTITION WALLS
WF-43	150MM THK. GIB PERIMETER & INTERIOR PARTITION WALLS
WF-44	150MM THK. GIB PERIMETER & INTERIOR PARTITION WALLS
WF-45	150MM THK. GIB PERIMETER & INTERIOR PARTITION WALLS
WF-46	150MM THK. GIB PERIMETER & INTERIOR PARTITION WALLS
WF-47	150MM THK. GIB PERIMETER & INTERIOR PARTITION WALLS
WF-48	150MM THK. GIB PERIMETER & INTERIOR PARTITION WALLS
WF-49	150MM THK. GIB PERIMETER & INTERIOR PARTITION WALLS
WF-50	150MM THK. GIB PERIMETER & INTERIOR PARTITION WALLS
WF-51	150MM THK. GIB PERIMETER & INTERIOR PARTITION WALLS
WF-52	150MM THK. GIB PERIMETER & INTERIOR PARTITION WALLS
WF-53	150MM THK. GIB PERIMETER & INTERIOR PARTITION WALLS
WF-54	150MM THK. GIB PERIMETER & INTERIOR PARTITION WALLS
WF-55	150MM THK. GIB PERIMETER & INTERIOR PARTITION WALLS
WF-56	150MM THK. GIB PERIMETER & INTERIOR PARTITION WALLS
WF-57	150MM THK. GIB PERIMETER & INTERIOR PARTITION WALLS
WF-58	150MM THK. GIB PERIMETER & INTERIOR PARTITION WALLS
WF-59	150MM THK. GIB PERIMETER & INTERIOR PARTITION WALLS
WF-60	150MM THK. GIB PERIMETER & INTERIOR PARTITION WALLS
WF-61	150MM THK. GIB PERIMETER & INTERIOR PARTITION WALLS
WF-62	150MM THK. GIB PERIMETER & INTERIOR PARTITION WALLS
WF-63	150MM THK. GIB PERIMETER & INTERIOR PARTITION WALLS
WF-64	150MM THK. GIB PERIMETER & INTERIOR PARTITION WALLS
WF-65	150MM THK. GIB PERIMETER & INTERIOR PARTITION WALLS
WF-66	150MM THK. GIB PERIMETER & INTERIOR PARTITION WALLS
WF-67	150MM THK. GIB PERIMETER & INTERIOR PARTITION WALLS
WF-68	150MM THK. GIB PERIMETER & INTERIOR PARTITION WALLS
WF-69	150MM THK. GIB PERIMETER & INTERIOR PARTITION WALLS
WF-70	150MM THK. GIB PERIMETER & INTERIOR PARTITION WALLS
WF-71	150MM THK. GIB PERIMETER & INTERIOR PARTITION WALLS
WF-72	150MM THK. GIB PERIMETER & INTERIOR PARTITION WALLS
WF-73	150MM THK. GIB PERIMETER & INTERIOR PARTITION WALLS
WF-74	150MM THK. GIB PERIMETER & INTERIOR PARTITION WALLS
WF-75	150MM THK. GIB PERIMETER & INTERIOR PARTITION WALLS
WF-76	150MM THK. GIB PERIMETER & INTERIOR PARTITION WALLS
WF-77	150MM THK. GIB PERIMETER & INTERIOR PARTITION WALLS
WF-78	150MM THK. GIB PERIMETER & INTERIOR PARTITION WALLS
WF-79	150MM THK. GIB PERIMETER & INTERIOR PARTITION WALLS
WF-80	150MM THK. GIB PERIMETER & INTERIOR PARTITION WALLS
WF-81	150MM THK. GIB PERIMETER & INTERIOR PARTITION WALLS
WF-82	150MM THK. GIB PERIMETER & INTERIOR PARTITION WALLS
WF-83	150MM THK. GIB PERIMETER & INTERIOR PARTITION WALLS
WF-84	150MM THK. GIB PERIMETER & INTERIOR PARTITION WALLS
WF-85	150MM THK. GIB PERIMETER & INTERIOR PARTITION WALLS
WF-86	150MM THK. GIB PERIMETER & INTERIOR PARTITION WALLS
WF-87	150MM THK. GIB PERIMETER & INTERIOR PARTITION WALLS
WF-88	150MM THK. GIB PERIMETER & INTERIOR PARTITION WALLS
WF-89	150MM THK. GIB PERIMETER & INTERIOR PARTITION WALLS
WF-90	150MM THK. GIB PERIMETER & INTERIOR PARTITION WALLS
WF-91	150MM THK. GIB PERIMETER & INTERIOR PARTITION WALLS
WF-92	150MM THK. GIB PERIMETER & INTERIOR PARTITION WALLS
WF-93	150MM THK. GIB PERIMETER & INTERIOR PARTITION WALLS
WF-94	150MM THK. GIB PERIMETER & INTERIOR PARTITION WALLS
WF-95	150MM THK. GIB PERIMETER & INTERIOR PARTITION WALLS
WF-96	150MM THK. GIB PERIMETER & INTERIOR PARTITION WALLS
WF-97	150MM THK. GIB PERIMETER & INTERIOR PARTITION WALLS
WF-98	150MM THK. GIB PERIMETER & INTERIOR PARTITION WALLS
WF-99	150MM THK. GIB PERIMETER & INTERIOR PARTITION WALLS
WF-100	150MM THK. GIB PERIMETER & INTERIOR PARTITION WALLS

FLOOR FINISHES	
MARK	DESCRIPTION
FF-1	200MM GROUT SAND ON 100MM POLYMER SAND
FF-2	200MM GROUT SAND ON 100MM POLYMER SAND
FF-3	200MM GROUT SAND ON 100MM POLYMER SAND
FF-4	200MM GROUT SAND ON 100MM POLYMER SAND
FF-5	200MM GROUT SAND ON 100MM POLYMER SAND
FF-6	200MM GROUT SAND ON 100MM POLYMER SAND
FF-7	200MM GROUT SAND ON 100MM POLYMER SAND
FF-8	200MM GROUT SAND ON 100MM POLYMER SAND
FF-9	200MM GROUT SAND ON 100MM POLYMER SAND
FF-10	200MM GROUT SAND ON 100MM POLYMER SAND
FF-11	200MM GROUT SAND ON 100MM POLYMER SAND
FF-12	200MM GROUT SAND ON 100MM POLYMER SAND
FF-13	200MM GROUT SAND ON 100MM POLYMER SAND
FF-14	200MM GROUT SAND ON 100MM POLYMER SAND
FF-15	200MM GROUT SAND ON 100MM POLYMER SAND
FF-16	200MM GROUT SAND ON 100MM POLYMER SAND
FF-17	200MM GROUT SAND ON 100MM POLYMER SAND
FF-18	200MM GROUT SAND ON 100MM POLYMER SAND
FF-19	200MM GROUT SAND ON 100MM POLYMER SAND
FF-20	200MM GROUT SAND ON 100MM POLYMER SAND
FF-21	200MM GROUT SAND ON 100MM POLYMER SAND
FF-22	200MM GROUT SAND ON 100MM POLYMER SAND
FF-23	200MM GROUT SAND ON 100MM POLYMER SAND
FF-24	200MM GROUT SAND ON 100MM POLYMER SAND
FF-25	200MM GROUT SAND ON 100MM POLYMER SAND
FF-26	200MM GROUT SAND ON 100MM POLYMER SAND
FF-27	200MM GROUT SAND ON 100MM POLYMER SAND
FF-28	200MM GROUT SAND ON 100MM POLYMER SAND
FF-29	200MM GROUT SAND ON 100MM POLYMER SAND
FF-30	200MM GROUT SAND ON 100MM POLYMER SAND
FF-31	200MM GROUT SAND ON 100MM POLYMER SAND
FF-32	200MM GROUT SAND ON 100MM POLYMER SAND
FF-33	200MM GROUT SAND ON 100MM POLYMER SAND
FF-34	200MM GROUT SAND ON 100MM POLYMER SAND
FF-35	200MM GROUT SAND ON 100MM POLYMER SAND
FF-36	200MM GROUT SAND ON 100MM POLYMER SAND
FF-37	200MM GROUT SAND ON 100MM POLYMER SAND
FF-38	200MM GROUT SAND ON 100MM POLYMER SAND
FF-39	200MM GROUT SAND ON 100MM POLYMER SAND
FF-40	200MM GROUT SAND ON 100MM POLYMER SAND
FF-41	200MM GROUT SAND ON 100MM POLYMER SAND
FF-42	200MM GROUT SAND ON 100MM POLYMER SAND
FF-43	200MM GROUT SAND ON 100MM POLYMER SAND
FF-44	200MM GROUT SAND ON 100MM POLYMER SAND
FF-45	200MM GROUT SAND ON 100MM POLYMER SAND
FF-46	200MM GROUT SAND ON 100MM POLYMER SAND
FF-47	200MM GROUT SAND ON 100MM POLYMER SAND
FF-48	200MM GROUT SAND ON 100MM POLYMER SAND
FF-49	200MM GROUT SAND ON 100MM POLYMER SAND
FF-50	200MM GROUT SAND ON 100MM POLYMER SAND
FF-51	200MM GROUT SAND ON 100MM POLYMER SAND
FF-52	200MM GROUT SAND ON 100MM POLYMER SAND
FF-53	200MM GROUT SAND ON 100MM POLYMER SAND
FF-54	200MM GROUT SAND ON 100MM POLYMER SAND
FF-55	200MM GROUT SAND ON 100MM POLYMER SAND
FF-56	200MM GROUT SAND ON 100MM POLYMER SAND
FF-57	200MM GROUT SAND ON 100MM POLYMER SAND
FF-58	200MM GROUT SAND ON 100MM POLYMER SAND
FF-59	200MM GROUT SAND ON 100MM POLYMER SAND
FF-60	200MM GROUT SAND ON 100MM POLYMER SAND
FF-61	200MM GROUT SAND ON 100MM POLYMER SAND
FF-62	200MM GROUT SAND ON 100MM POLYMER SAND
FF-63	200MM GROUT SAND ON 100MM POLYMER SAND
FF-64	200MM GROUT SAND ON 100MM POLYMER SAND
FF-65	200MM GROUT SAND ON 100MM POLYMER SAND
FF-66	200MM GROUT SAND ON 100MM POLYMER SAND
FF-67	200MM GROUT SAND ON 100MM POLYMER SAND
FF-68	200MM GROUT SAND ON 100MM POLYMER SAND
FF-69	200MM GROUT SAND ON 100MM POLYMER SAND
FF-70	200MM GROUT SAND ON 100MM POLYMER SAND
FF-71	200MM GROUT SAND ON 100MM POLYMER SAND
FF-72	200MM GROUT SAND ON 100MM POLYMER SAND
FF-73	200MM GROUT SAND ON 100MM POLYMER SAND
FF-74	200MM GROUT SAND ON 100MM POLYMER SAND
FF-75	200MM GROUT SAND ON 100MM POLYMER SAND
FF-76	200MM GROUT SAND ON 100MM POLYMER SAND
FF-77	200MM GROUT SAND ON 100MM POLYMER SAND
FF-78	200MM GROUT SAND ON 100MM POLYMER SAND
FF-79	200MM GROUT SAND ON 100MM POLYMER SAND
FF-80	200MM GROUT SAND ON 100MM POLYMER SAND
FF-81	200MM GROUT SAND ON 100MM POLYMER SAND
FF-82	200MM GROUT SAND ON 100MM POLYMER SAND
FF-83	200MM GROUT SAND ON 100MM POLYMER SAND
FF-84	200MM GROUT SAND ON 100MM POLYMER SAND
FF-85	200MM GROUT SAND ON 100MM POLYMER SAND
FF-86	200MM GROUT SAND ON 100MM POLYMER SAND
FF-87	200MM GROUT SAND ON 100MM POLYMER SAND
FF-88	200MM GROUT SAND ON 100MM POLYMER SAND
FF-89	200MM GROUT SAND ON 100MM POLYMER SAND
FF-90	200MM GROUT SAND ON 100MM POLYMER SAND
FF-91	200MM GROUT SAND ON 100MM POLYMER SAND
FF-92	200MM GROUT SAND ON 100MM POLYMER SAND
FF-93	200MM GROUT SAND ON 100MM POLYMER SAND
FF-94	200MM GROUT SAND ON 100MM POLYMER SAND
FF-95	200MM GROUT SAND ON 100MM POLYMER SAND
FF-96	200MM GROUT SAND ON 100MM POLYMER SAND
FF-97	200MM GROUT SAND ON 100MM POLYMER SAND
FF-98	200MM GROUT SAND ON 100MM POLYMER SAND
FF-99	200MM GROUT SAND ON 100MM POLYMER SAND
FF-100	200MM GROUT SAND ON 100MM POLYMER SAND



REPUBLIC OF THE PHILIPPINES
UNIVERSITY OF SCIENCE AND TECHNOLOGY OF SOUTHERN PHILIPPINES
CAGAYAN DE ORO CAMPUS
INFRASTRUCTURE PLANNING AND FACILITY DEVELOPMENT UNIT
CLARO M. RECTO AVENUE, LAPASAN, CAGAYAN DE ORO CITY 9000
TELEPHONE # (0822) 72-40-45 / (0880) 858-1738 / 856-1738 | TELE FAX (0880) 856-4498
WEBSITE: www.ustp.edu.ph

PERDINAND A. DUMAPA
ARCHITECT OF RECORD
PRC NO. 01332-A
TIN NO. 185-092-60
DATE: 02-19-2025
PLACE: CAGAYAN DE ORO

CONSTRUCTION OF 21ST CENTURY CLASSROOM BUILDINGS PHASE III, VILLANUEVA CAMPUS
LOCATION: USTP VILLANUEVA CAMPUS, MISAMIS ORIENTAL
OWNER: UNIVERSITY OF SCIENCE AND TECHNOLOGY OF SOUTHERN PHILIPPINES

RECOMMENDING APPROVAL:
ENGR. GRACE C. BABA
DIRECTOR, IPFUD

RECOMMENDING APPROVAL:
ATTY. ERWIN B. BUENO
VP FOR ADMINISTRATION & LEGAL AFFAIRS

APPROVED BY:
DR. AMBROSIO B. CULTURA II
PRESIDENT, USTP SYSTEM

SHEET CONTENTS:
FIFTH AND ROOF DECK WALL FINISHES
GROUND FLOOR FINISHES

DRAWN BY: KRUI, JZOP
DATE DRAWN: SEPTEMBER 2025
FNT:

A11

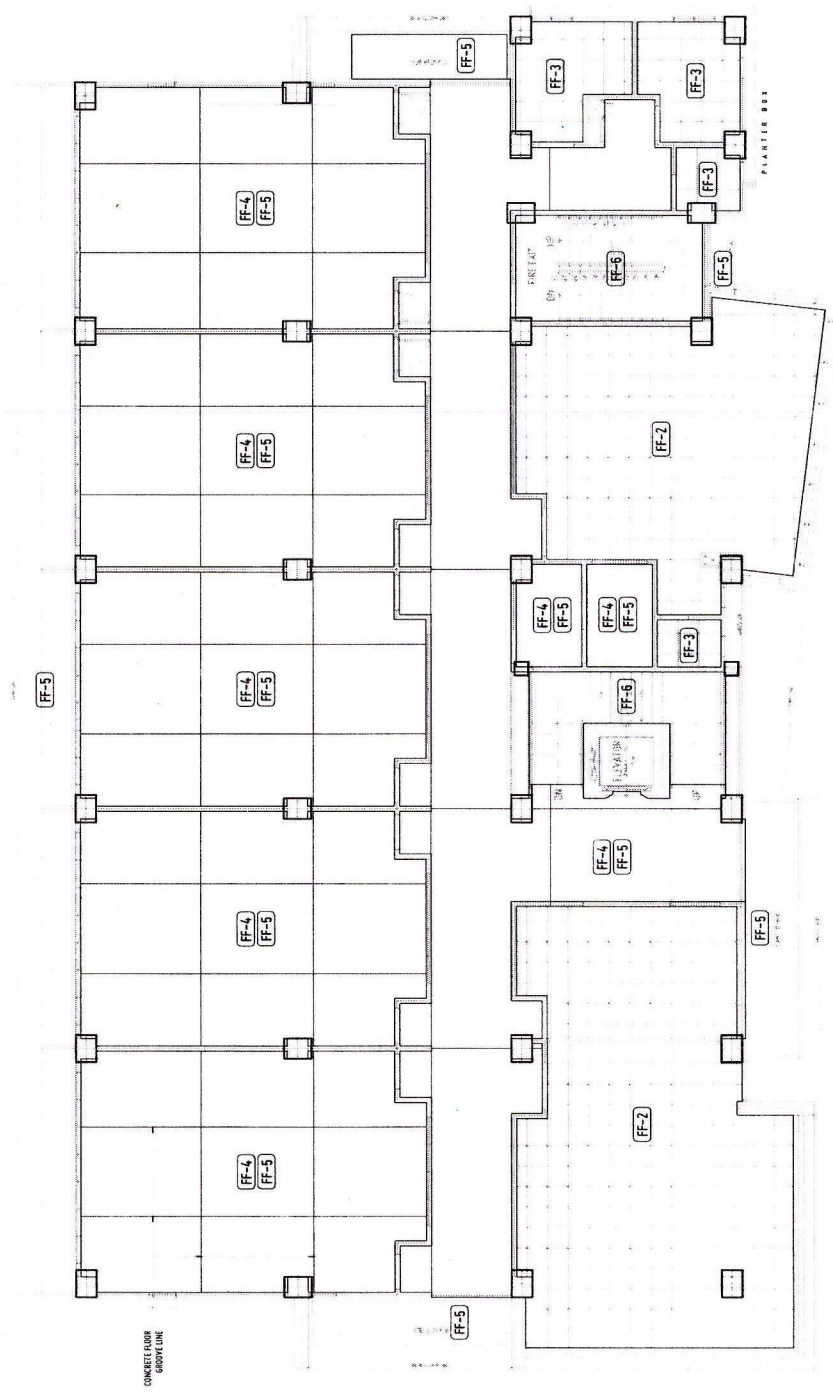
APPROVED BY:

- GENERAL NOTES:
- FF-4 = FINISH FLOOR LINE. VERIFY FLOOR FINISHES/MATERIALS.
 - ALL INTERIOR PARTITIONS AND FURNITURE LAYOUT ARE INDICATIVE ONLY AND MAY CHANGE. VERIFY INTERIOR DESIGN DRAWINGS.
 - ALL LANDSCAPE ARCHITECTURE ELEMENTS ARE INDICATIVE ONLY AND MAY CHANGE. VERIFY LANDSCAPE ARCHITECTURE DRAWINGS.
 - DO NOT SCALE DRAWINGS. WRITTEN DIMENSIONS TO GOVERN.
 - IN CASE OF DISCREPANCY IN THE FIGURES AND DRAWINGS THE MATTER SHALL BE SUBMITTED IMMEDIATELY TO THE ARCHITECT BEFORE ADJUSTMENTS ARE TO BE MADE.
 - VERIFY ACTUAL TECHNICAL SITE CONDITIONS.
 - VERIFY ACTUAL ELEVATION MARKS AND LOT BOUNDARIES PRIOR TO COMMENCING WORK.
 - ALL WORKS HEREIN SHALL BE DONE UNDER THE STRICT SUPERVISION OF DULY LICENSED AND EXPERIENCED ARCHITECT/ENGINEER.
 - LOT AND BUILDING BOUNDARIES SHOULD BE SUPPORTED BY RETAINING WALLS AND FENCES. VERIFY EXISTING HEIGHTS, ELEVATIONS AND OTHER SITE CONDITIONS.
 - TO THE GENERAL CONTRACTOR, SUB-CONTRACTORS INCLUDING SPECIALTY CONTRACTORS, SHALL SUBMIT PROPOSED DRAWINGS INCLUDING MATERIALS SAMPLE PRIOR TO INSTALLATIONS FOR ARCHITECT'S APPROVAL.

- IMPORTANT NOTES:
- CHECK AND VERIFY ACTUAL SITE CONDITION BEFORE CONSTRUCTION. CHECK AND REVIEW PLANS, AND IF THERE ARE CONFLICTS BETWEEN DRAWINGS, BOQ, BOB, AND TECHNICAL SPECIFICATIONS, INFORM THE IPFDD THIRD AIR, BEFORE PROCUREMENT AND INSTALLATION OF CERTAIN ITEMS AND MATERIALS.
 - BEFORE INSTALLATION OF MATERIALS, ESPECIALLY ARCHITECTURAL FINISHES OR MATERIALS THAT WILL GREATLY AFFECT THE CONSTRUCTION, INFORM THE IPFDD THIRD AIR FOR INSPECTION AND RFA (FOR MATERIAL APPROVAL) BEFORE PROCUREMENT AND INSTALLATION OF CERTAIN ITEMS AND MATERIALS.
 - FOR ANY CONFLICT BETWEEN ARCHITECTURAL PLANS AND OTHER UTILITIES, INFORM THE IPFDD DESIGN ARCHITECT AND/OR ENGINEERS TO RESOLVE DESIGN ISSUE.

THIRD FLOOR PLAN-FLOOR FINISHES-for future development

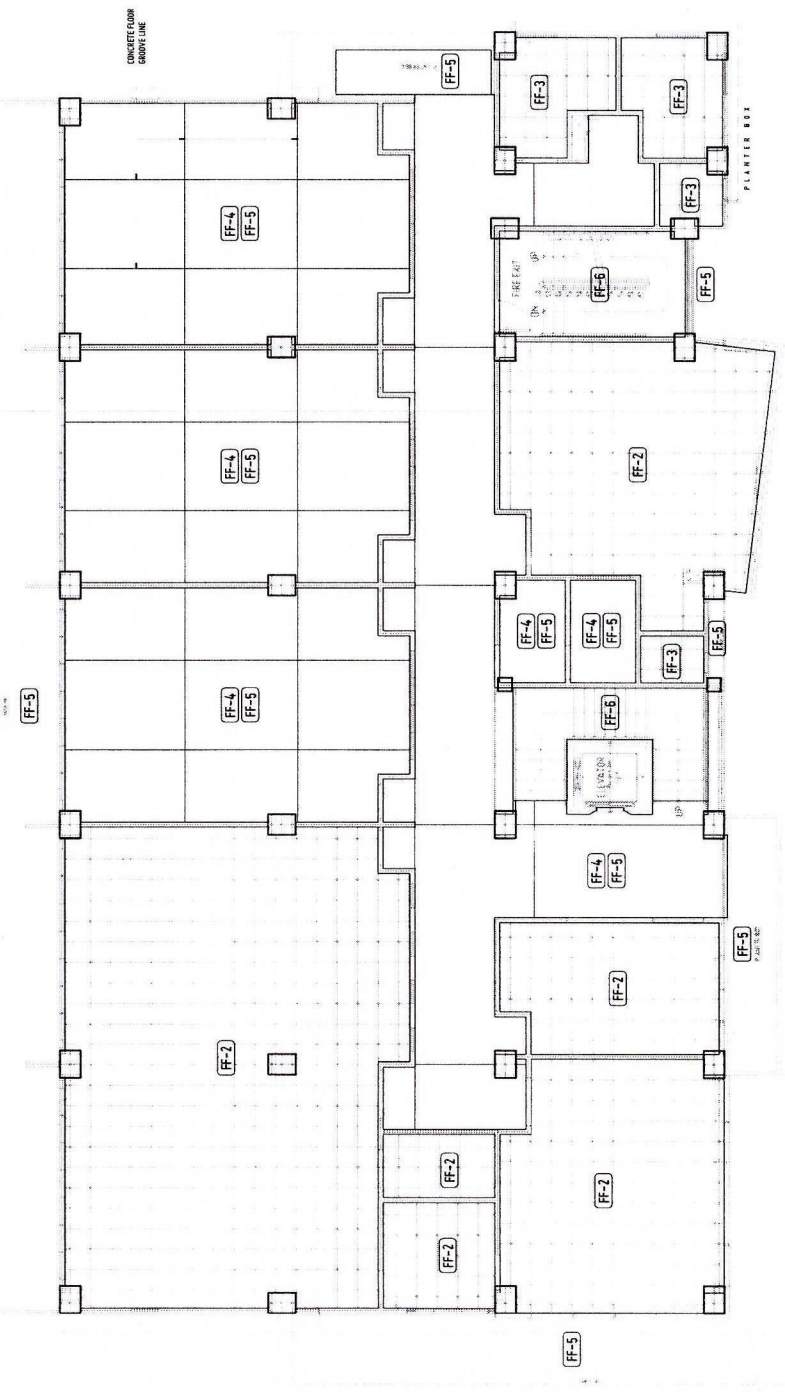
SCALE: 1:100 MTS



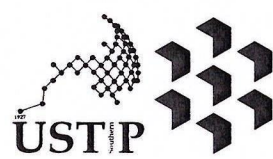
MARK	DESCRIPTION
FF-1	GRANITE BROWN MARBLES, RECTANGULAR POLISHED FLOOR TILES, VERIFY ARCHITECT
FF-2	GRANITE BROWN MARBLES, SQUARED FLOOR TILES, VERIFY ARCHITECT
FF-3	GRANITE BROWN MARBLES, SQUARED FLOOR TILES, VERIFY ARCHITECT
FF-4	PLAIN CONCRETE, HARDENED/POSTPROMER FLOOR
FF-5	PLAIN CONCRETE, HARDENED/POSTPROMER FLOOR
FF-6	PLAIN CONCRETE, HARDENED/POSTPROMER FLOOR
FF-7	PLAIN CONCRETE, HARDENED/POSTPROMER FLOOR
FF-8	PLAIN CONCRETE, HARDENED/POSTPROMER FLOOR

SECOND FLOOR PLAN-FLOOR FINISHES-for future development

SCALE: 1:100 MTS



MARK	DESCRIPTION
FF-1	GRANITE BROWN MARBLES, RECTANGULAR POLISHED FLOOR TILES, VERIFY ARCHITECT
FF-2	GRANITE BROWN MARBLES, SQUARED FLOOR TILES, VERIFY ARCHITECT
FF-3	GRANITE BROWN MARBLES, SQUARED FLOOR TILES, VERIFY ARCHITECT
FF-4	PLAIN CONCRETE, HARDENED/POSTPROMER FLOOR
FF-5	PLAIN CONCRETE, HARDENED/POSTPROMER FLOOR
FF-6	PLAIN CONCRETE, HARDENED/POSTPROMER FLOOR
FF-7	PLAIN CONCRETE, HARDENED/POSTPROMER FLOOR
FF-8	PLAIN CONCRETE, HARDENED/POSTPROMER FLOOR



REPUBLIC OF THE PHILIPPINES
UNIVERSITY OF SCIENCE AND TECHNOLOGY OF SOUTHERN PHILIPPINES
CAGAYAN DE ORO CAMPUS
INFRASTRUCTURE PLANNING AND FACILITY DEVELOPMENT UNIT
CLAUDIO M. RECTO AVENUE, LAPASAK, CAGAYAN DE ORO CITY 8000
TELEPHONE # (08822) 72-00-85 / (088) 856-1738 / 856-1739 | TELEFAX (088) 856-4486
WEBSITE: www.ustp.edu.ph

PERDINAND A. BUNPA
ARCHITECT OF RECORD
PRC NO. 11932-B PIP NO. 5820170-A
DATE 02-19-2025
TIN NO. 185-092-837 PLACE CAGAYAN DE ORO

PROJECT: CONSTRUCTION OF 21ST CENTURY CLASSROOM BUILDINGS PHASE III, VILLANUEVA CAMPUS
LOCATION: USTP VILLANUEVA CAMPUS, MISAMIS ORIENTAL
OWNER: UNIVERSITY OF SCIENCE AND TECHNOLOGY OF SOUTHERN PHILIPPINES

RECOMMENDING APPROVAL:
ENGR. GRACE C. BABA
DIRECTOR, IPFDD

RECOMMENDING APPROVAL:
ATTY. ERWIN B. BUSIO
VP FOR ADMINISTRATION & LEGAL AFFAIRS

APPROVED BY:
DR. AMBROSIO B. CULTURA II
PRESIDENT, USTP SYSTEM

SHEET CONTENTS:
SECOND AND THIRD FLOOR FINISHES

DRAWN BY: KRUI, JZDP
DATE DRAWN: SEPTEMBER 2025
FNT:

A12

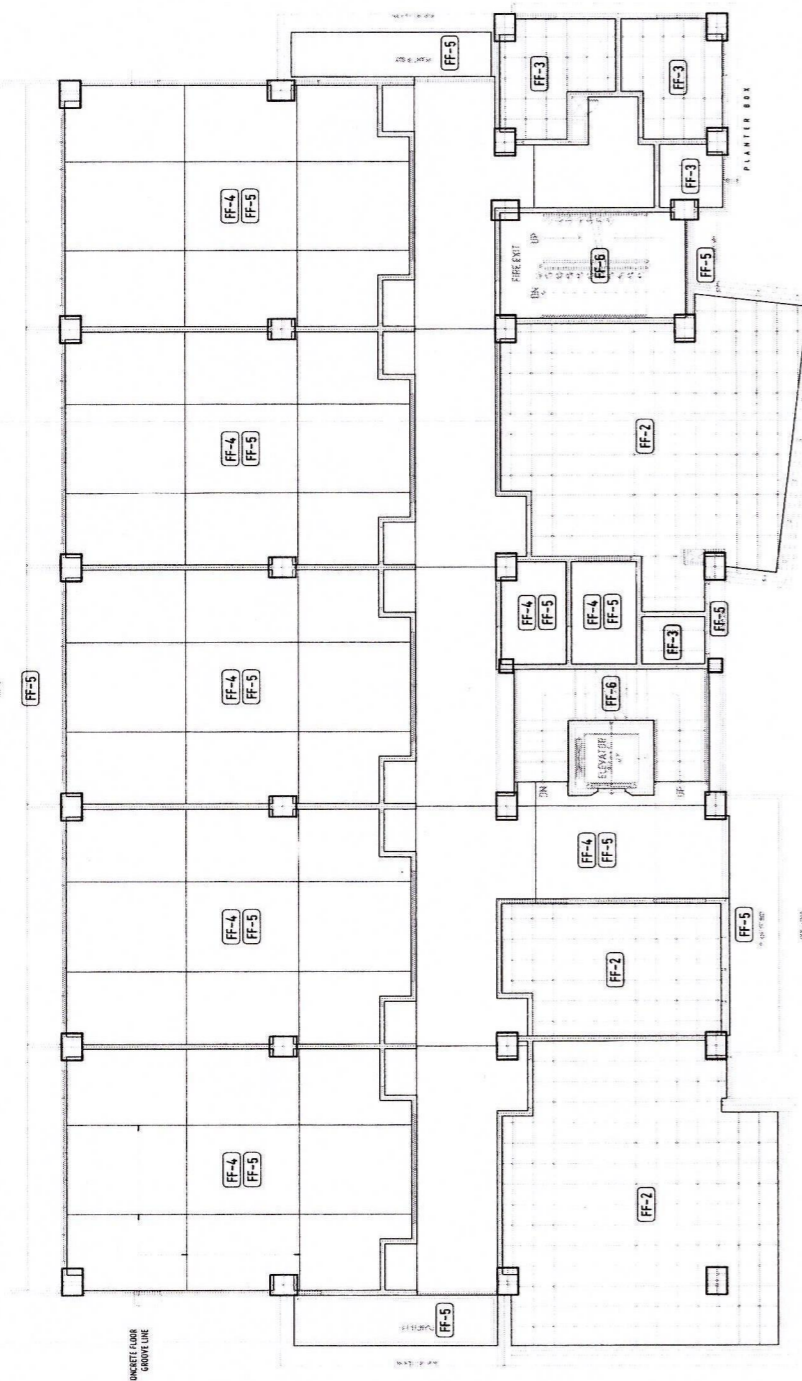
APPROVED BY:

GENERAL NOTES:

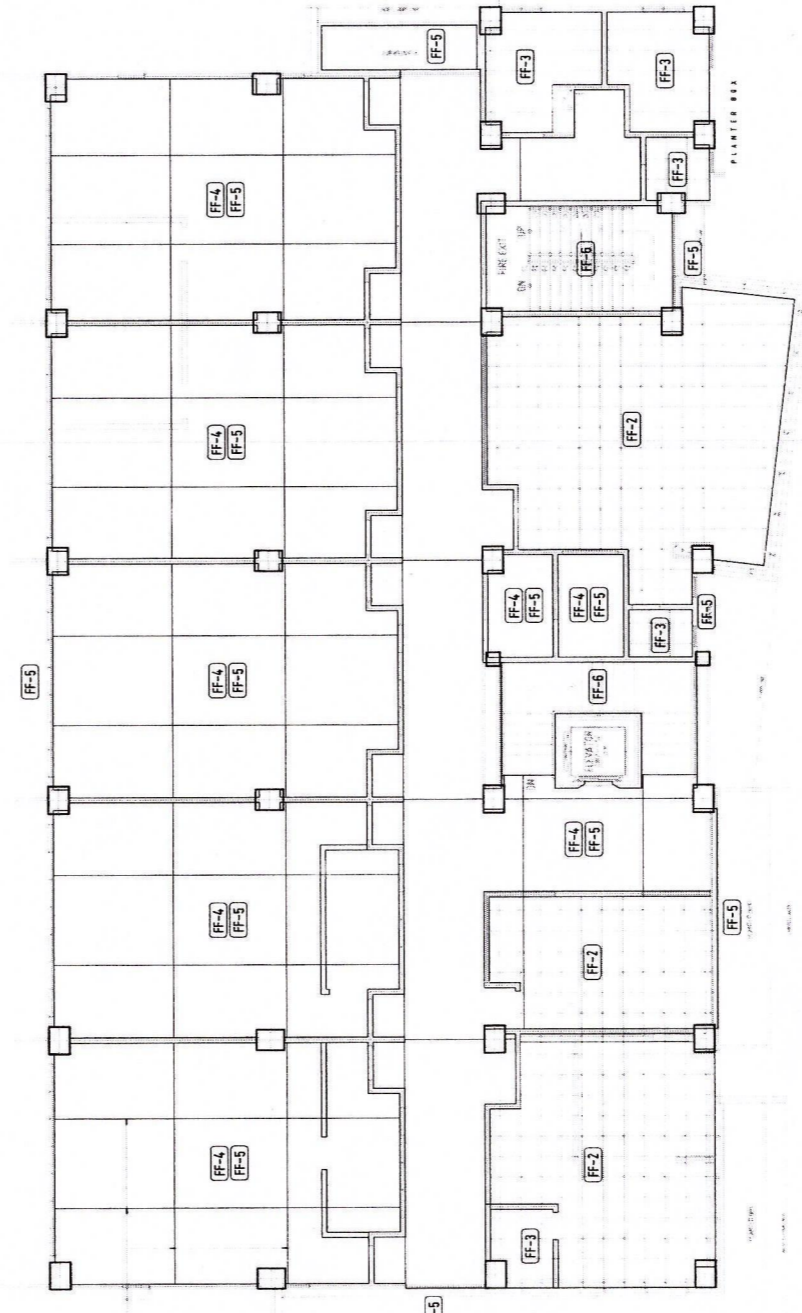
1. FFL - FINISH FLOOR LINE. VERIFY FLOOR FINISHES/MATERIALS.
2. ALL INTERIOR PARTITIONS AND FURNITURE LAYOUT ARE INDICATIVE ONLY AND MAY CHANGE. VERIFY INTERIOR DESIGN DRAWINGS.
3. ALL LANDSCAPE ARCHITECTURE ELEMENTS ARE INDICATIVE ONLY AND MAY CHANGE. VERIFY LANDSCAPE ARCHITECTURE DRAWINGS.
4. DO NOT SCALE DRAWINGS. WRITTEN DIMENSIONS TO GOVERN.
5. IN CASE OF DISCREPANCY IN THE FIGURES AND DRAWINGS THE MATTER SHALL BE SUBMITTED IMMEDIATELY TO THE ARCHITECT BEFORE ADJUSTMENTS ARE TO BE MADE.
6. VERIFY ACTUAL TECHNICAL SITE CONDITIONS.
7. VERIFY ACTUAL ELEVATION MARKS AND LOT BOUNDARIES PRIOR TO COMMENCING WORK.
8. ALL WORKS HEREIN SHALL BE DONE UNDER THE STRICT SUPERVISION OF DULY LICENSED AND EXPERIENCED ARCHITECT/ENGINEER.
9. LOT AND BUILDING BOUNDARIES SHOULD BE SUPPORTED BY RETAINING WALLS AND FENCES. VERIFY EASING HEIGHTS, ELEVATIONS AND OTHER SITE CONDITIONS.
10. THE GENERAL CONTRACTOR, SUB-CONTRACTORS INCLUDING SPECIALTY CONTRACTORS, SHALL SUBMIT PROPER SHOP DRAWINGS INCLUDING MATERIALS SAMPLE PRIOR TO INSTALLATIONS FOR ARCHITECT'S APPROVAL.

IMPORTANT NOTES:

1. CHECK AND VERIFY ACTUAL SITE CONDITION BEFORE CONSTRUCTION.
2. CHECK AND REVIEW PLANS, AND IF THERE ARE CONFLICTS BETWEEN DRAWINGS, BIDDING AND TECHNICAL SPECIFICATIONS, INFORM THE IPFOU THRU BIR BEFORE PROCUREMENT AND INSTALLATION OF CERTAIN ITEMS AND MATERIALS.
3. BEFORE INSTALLATION OF MATERIALS, ESPECIALLY ARCHITECTURAL FINISHES OR MATERIALS THAT WILL GREATLY AFFECT THE CONSTRUCTION, INFORM THE IPFOU THRU BIR (FOR INFORMATION) AND RFA (FOR MATERIAL APPROVAL) BEFORE PROCUREMENT AND INSTALLATION OF CERTAIN ITEMS AND MATERIALS.
4. FOR ANY CONFLICT BETWEEN ARCHITECTURAL PLANS AND OTHER UTILITIES, INFORM THE IPFOU DESIGN ARCHITECT AND/OR ENGINEERS TO RESOLVE DESIGN ISSUE.



FOURTH FLOOR PLAN - FLOOR FINISHES
SCALE: 1:100 MTS



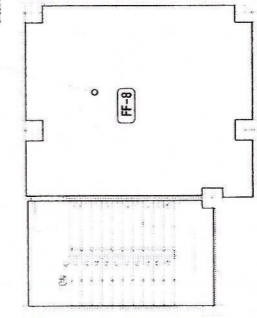
FIFTH FLOOR PLAN - FLOOR FINISHES
SCALE: 1:100 MTS



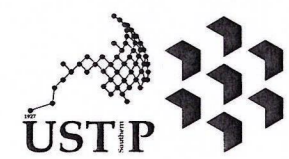
MARK	DESCRIPTION
FF-1	WOOD & BROWN OBERONIC, 200X200 SQ. METERS, 12MM TILE, VENEER ARCHITECT
FF-2	WOOD & BROWN OBERONIC, 200X200 SQ. METERS, 12MM TILE, VENEER ARCHITECT
FF-3	WOOD & BROWN OBERONIC, 200X200 SQ. METERS, 12MM TILE, VENEER ARCHITECT
FF-4	WOOD & BROWN OBERONIC, 200X200 SQ. METERS, 12MM TILE, VENEER ARCHITECT
FF-5	WOOD & BROWN OBERONIC, 200X200 SQ. METERS, 12MM TILE, VENEER ARCHITECT
FF-6	WOOD & BROWN OBERONIC, 200X200 SQ. METERS, 12MM TILE, VENEER ARCHITECT
FF-7	WOOD & BROWN OBERONIC, 200X200 SQ. METERS, 12MM TILE, VENEER ARCHITECT
FF-8	WOOD & BROWN OBERONIC, 200X200 SQ. METERS, 12MM TILE, VENEER ARCHITECT

MARK	DESCRIPTION
FF-1	WOOD & BROWN OBERONIC, 200X200 SQ. METERS, 12MM TILE, VENEER ARCHITECT
FF-2	WOOD & BROWN OBERONIC, 200X200 SQ. METERS, 12MM TILE, VENEER ARCHITECT
FF-3	WOOD & BROWN OBERONIC, 200X200 SQ. METERS, 12MM TILE, VENEER ARCHITECT
FF-4	WOOD & BROWN OBERONIC, 200X200 SQ. METERS, 12MM TILE, VENEER ARCHITECT
FF-5	WOOD & BROWN OBERONIC, 200X200 SQ. METERS, 12MM TILE, VENEER ARCHITECT
FF-6	WOOD & BROWN OBERONIC, 200X200 SQ. METERS, 12MM TILE, VENEER ARCHITECT
FF-7	WOOD & BROWN OBERONIC, 200X200 SQ. METERS, 12MM TILE, VENEER ARCHITECT
FF-8	WOOD & BROWN OBERONIC, 200X200 SQ. METERS, 12MM TILE, VENEER ARCHITECT

APPLICATION OF LOAD WATER PROOFING USE ARCHITECT'S MATERIAL SPECIFICATION



ROOF DECK PLAN
SCALE: 1:100 MTS



REPUBLIC OF THE PHILIPPINES
UNIVERSITY OF SCIENCE AND TECHNOLOGY OF SOUTHERN PHILIPPINES
CAGAYAN DE ORO CAMPUS
INFRASTRUCTURE PLANNING AND FACILITY DEVELOPMENT UNIT
CLARO H. RECTO AVENUE, LAPASAKAN, CAGAYAN DE ORO CITY 9000
TELEPHONE # (08622) 72-50-55 / (0860) 858-1738 / 858-1739 | TELE FAX (0860) 858-4896
WEBSITE: www.ustp.edu.ph

Ferdinand A. Bumba
ARCHITECT OF RECORD
PROJECT: CONSTRUCTION OF 21ST CENTURY CLASSROOM BUILDINGS PHASE III, VILLANUEVA CAMPUS
LOCATION: USTP VILLANUEVA CAMPUS, MISAMIS ORIENTAL
OWNER: UNIVERSITY OF SCIENCE AND TECHNOLOGY OF SOUTHERN PHILIPPINES
PRC NO. 03329 PTR NO. 5820170 A
DATE: 02-19-2025
TIN NO. 115-092-837 PLACE: CAGAYAN DE ORO

RECOMMENDING APPROVAL:
ENGR. GRACE C. BABA
DIRECTOR, IPFOU

RECOMMENDING APPROVAL:
ATTY. ERWIN B. RUCIO
VP FOR ADMINISTRATION & LEGAL AFFAIRS

APPROVED BY:
DR. AMBROSIO B. CULTURA II
PRESIDENT, USTP SYSTEM

SHEET CONTENTS:
FOURTH, FIFTH AND ROOF DECK FLOOR FINISHES

DRAWN BY:
XRU, J2DP
DATE DRAWN:
SEPTEMBER 2025
FMT:

A13

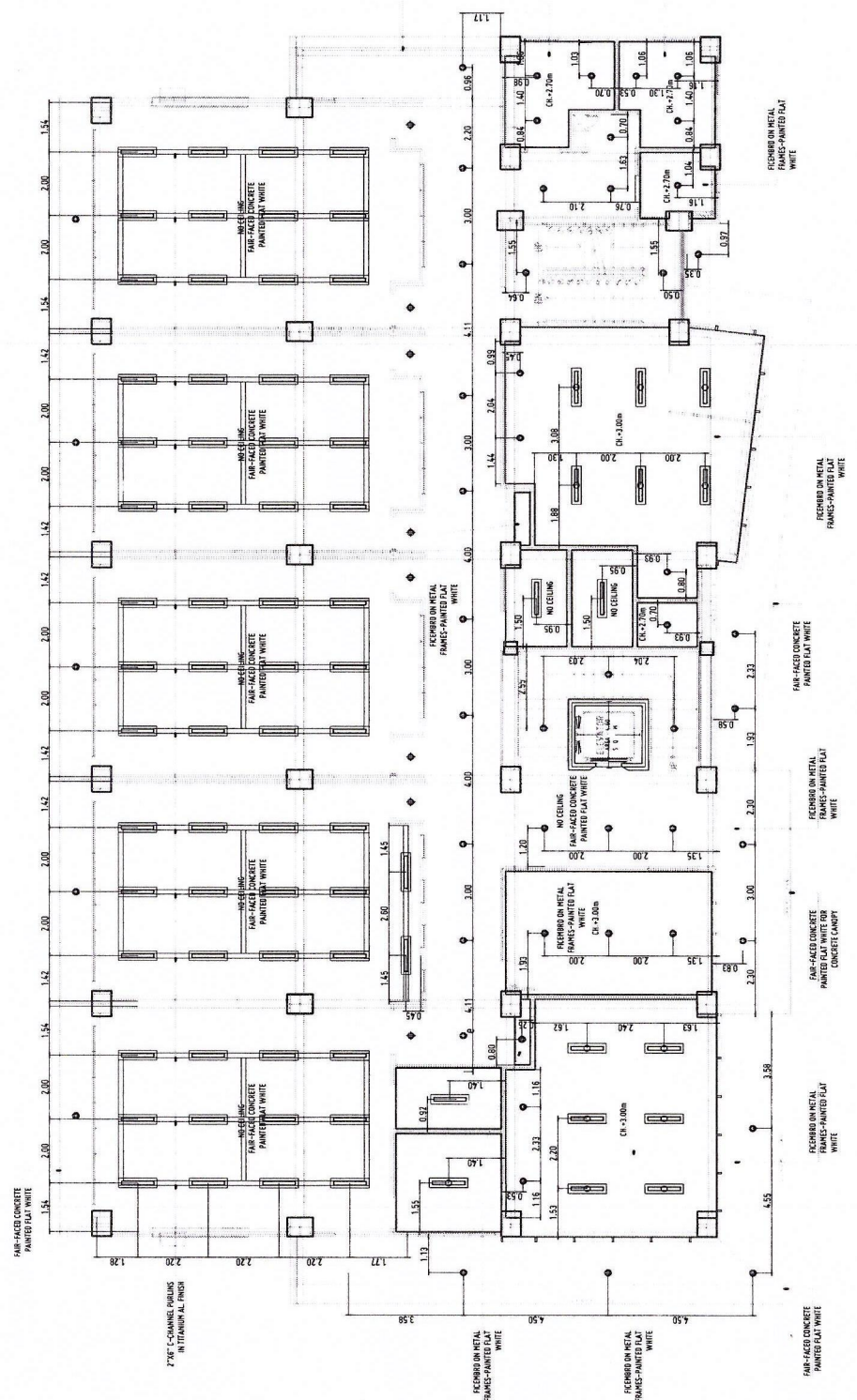
APPROVED BY:

- GENERAL NOTES:
1. FFL - FINISH FLOOR LINE. VERIFY FLOOR FINISHES/MATERIALS.
 2. ALL INTERIOR PARTITIONS AND FURNITURE LAYOUT ARE INDICATIVE ONLY AND MAY CHANGE. VERIFY INTERIOR DESIGN DRAWINGS.
 3. ALL LANDSCAPE ARCHITECTURE ELEMENTS ARE INDICATIVE ONLY AND MAY CHANGE. VERIFY LANDSCAPE ARCHITECTURE DRAWINGS.
 4. DO NOT SCALE DRAWINGS. WRITTEN DIMENSIONS TO GOVERN.
 5. IN CASE OF DISCREPANCY IN THE FIGURES AND DRAWINGS THE MATTER SHALL BE SUBMITTED IMMEDIATELY TO THE ARCHITECT BEFORE ADJUSTMENTS ARE TO BE MADE.
 6. VERIFY ACTUAL TECHNICAL SITE CONDITIONS.
 7. VERIFY ACTUAL ELEVATION MARKS AND LOT BOUNDARIES PRIOR TO COMMENCING WORK.
 8. ALL WORKS HEREIN SHALL BE DONE UNDER THE STREET SUPERVISION OF BUREAU ENGINEER AND EXPERIENCED ARCHITECT/ENGINEER.
 9. LOT AND BUILDING BOUNDARIES SHOULD BE SUPPORTED BY RETAINING WALLS AND FENCES. VERIFY EXISTING HEIGHTS, ELEVATIONS AND OTHER SITE CONDITIONS.
 10. THE GENERAL CONTRACTOR, SUB-CONTRACTORS INCLUDING SPECIALTY CONTRACTORS, SHALL SUBMIT PROPER SHOP DRAWINGS INCLUDING MATERIALS SAMPLE PRIOR TO INSTALLATIONS FOR ARCHITECT'S APPROVAL.

- IMPORTANT NOTES:
1. CHECK AND VERIFY ACTUAL SITE CONDITION BEFORE CONSTRUCTION.
 2. CHECK AND REVIEW PLANS, AND IF THERE ARE CONFLICTS BETWEEN DRAWINGS, BIDDING AND TECHNICAL SPECIFICATIONS, INFORM THE IPROD THRU RFL BEFORE PROCUREMENT AND INSTALLATION OF CERTAIN ITEMS AND MATERIALS.
 3. BEFORE INSTALLATION OF MATERIALS, ESPECIALLY ARCHITECTURAL FINISHES OR MATERIALS THAT WILL GREATLY AFFECT THE CONSTRUCTION, INFORM THE IPROD THRU RFL FOR INFORMATION AND RFL FOR MATERIAL APPROVAL BEFORE PROCUREMENT AND INSTALLATION OF CERTAIN ITEMS AND MATERIALS.
 4. FOR ANY CONFLICT BETWEEN ARCHITECTURAL PLANS AND OTHER UTILITIES, INFORM THE IPROD DESIGN ARCHITECT AND/OR ENGINEERS TO RESOLVE DESIGN ISSUE.

SECOND FLOOR PLAN-REFLECTED CEILING PLAN-for future development

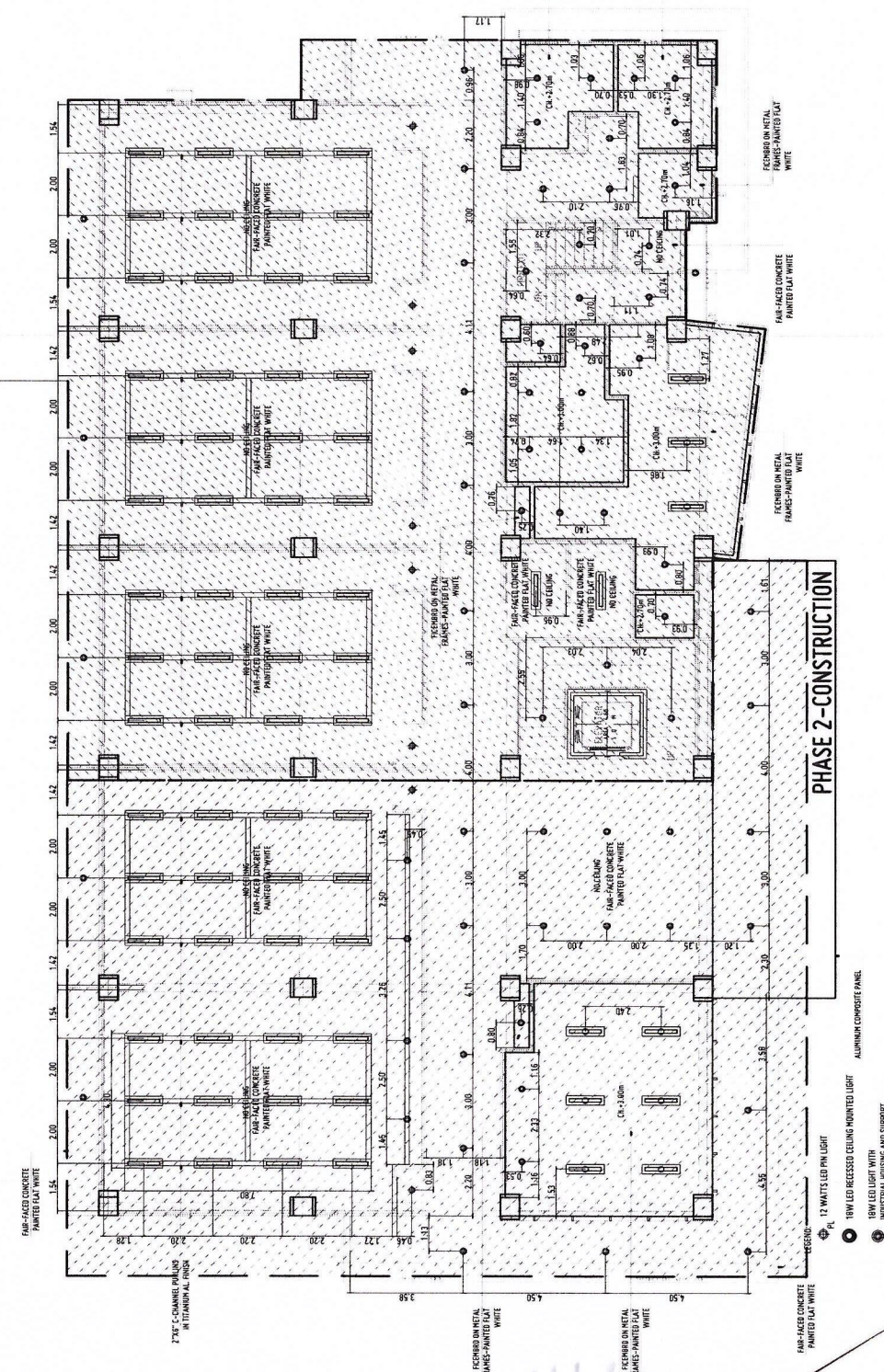
1:100 MTS SCALE



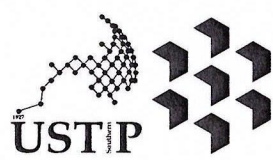
- LEGEND:
- 12 WATTS LED PNL LIGHT
 - 18W LED RECESSED CEILING MOUNTED LIGHT
 - 18W LED LIGHT WITH INDUSTRIAL HOUSING AND SUPPORT
 - 1-23W T8 LED FLUORESCENT LIGHT RECESSED TYPE WITH INDUSTRIAL HOUSING AND SUPPORT
 - 1-23W T8 LED FLUORESCENT LIGHT RECESSED TYPE WITH INDUSTRIAL HOUSING AND SUPPORT

GROUND FLOOR PLAN-REFLECTED CEILING PLAN-Phase 1 & 2 Construction

1:100 MTS SCALE



- LEGEND:
- 12 WATTS LED PNL LIGHT
 - 18W LED RECESSED CEILING MOUNTED LIGHT
 - 18W LED LIGHT WITH INDUSTRIAL HOUSING AND SUPPORT
 - 1-23W T8 LED FLUORESCENT LIGHT MOUNTED TYPE WITH INDUSTRIAL HOUSING AND SUPPORT
 - 1-23W T8 LED FLUORESCENT LIGHT RECESSED TYPE WITH INDUSTRIAL HOUSING AND SUPPORT



REPUBLIC OF THE PHILIPPINES
UNIVERSITY OF SCIENCE AND TECHNOLOGY OF SOUTHERN PHILIPPINES
CAGAYAN DE ORO CAMPUS
INFRASTRUCTURE PLANNING AND FACILITY DEVELOPMENT UNIT
CLARO M. RECTO AVENUE, LAPASAN, CAGAYAN DE ORO CITY 9000
TELEPHONE # (08822) 72-40-55 / (088) 856-1739 / 856-1139 | TELE FAX (088) 856-4595
WEBSITE: www.ustp.edu.ph

BERNARD A. DUMPER
ARCHITECT DE REGIDO
PRC NO. 013329 PIR NO. 5820170 A LOCATION
DATE 02-19-2025
TIN NO. 43-092-834 PLACE CAGAYAN DE ORO OWNER

CONSTRUCTION OF 21ST CENTURY CLASSROOM BUILDINGS PHASE III,
VILLANUEVA CAMPUS
USTP VILLANUEVA CAMPUS, MISAMIS ORIENTAL
UNIVERSITY OF SCIENCE AND TECHNOLOGY OF SOUTHERN PHILIPPINES

RECOMMENDING APPROVAL:
ENGR. GRACE C. BABA
DIRECTOR, IPROD

RECOMMENDING APPROVAL:
ATTY. ERWIN B. BUCHO
VP FOR ADMINISTRATION & LEGAL AFFAIRS

APPROVED BY:
DR. AMBROSIO B. CULTURA II
PRESIDENT, USTP SYSTEM

SHEET CONTENTS:
GROUND AND SECOND RCP

DRAWN BY:
KRU, JZDP
DATE DRAWN:
SEPTEMBER 2025
FMT:

A14

APPROVED BY:

- GENERAL NOTES:
1. FFL = FINISH FLOOR LINE. VERIFY FLOOR FINISHES/MATERIALS.
 2. ALL INTERIOR PARTITIONS AND FURNITURE LAYOUT ARE INDICATIVE ONLY AND MAY CHANGE. VERIFY INTERIOR DESIGN DRAWINGS.
 3. ALL LANDSCAPE ARCHITECTURE ELEMENTS ARE INDICATIVE ONLY AND MAY CHANGE. VERIFY LANDSCAPE ARCHITECTURE DRAWINGS.
 4. DO NOT SCALE DRAWINGS. WRITTEN DIMENSIONS TO GOVERN.
 5. IN CASE OF DISCREPANCY IN THE FIGURES AND DRAWINGS THE MATTER SHALL BE SUBMITTED IMMEDIATELY TO THE ARCHITECT BEFORE ADJUSTMENTS ARE TO BE MADE.
 6. VERIFY ACTUAL TECHNICAL SITE CONDITIONS.
 7. VERIFY ACTUAL ELEVATION MARKS AND LOT BOUNDARIES PRIOR TO COMMENCING WORK.
 8. ALL WORKS HEREIN SHALL BE DONE UNDER THE STRICT SUPERVISION OF FULLY LICENSED AND EXPERIENCED ARCHITECT/ENGINEER.
 9. LOT AND BUILDING BOUNDARIES SHOULD BE SUPPORTED BY RETAINING WALLS AND FENCES. VERIFY EXISTING HEIGHTS, ELEVATIONS AND OTHER SITE CONDITIONS.
 10. THE GENERAL CONTRACTOR, SUB-CONTRACTORS INCLUDING SPECIALTY CONTRACTORS, SHALL SUBMIT PROPER SHOP DRAWINGS INCLUDING MATERIALS SAMPLE PRIOR TO INSTALLATIONS FOR ARCHITECT'S APPROVAL.

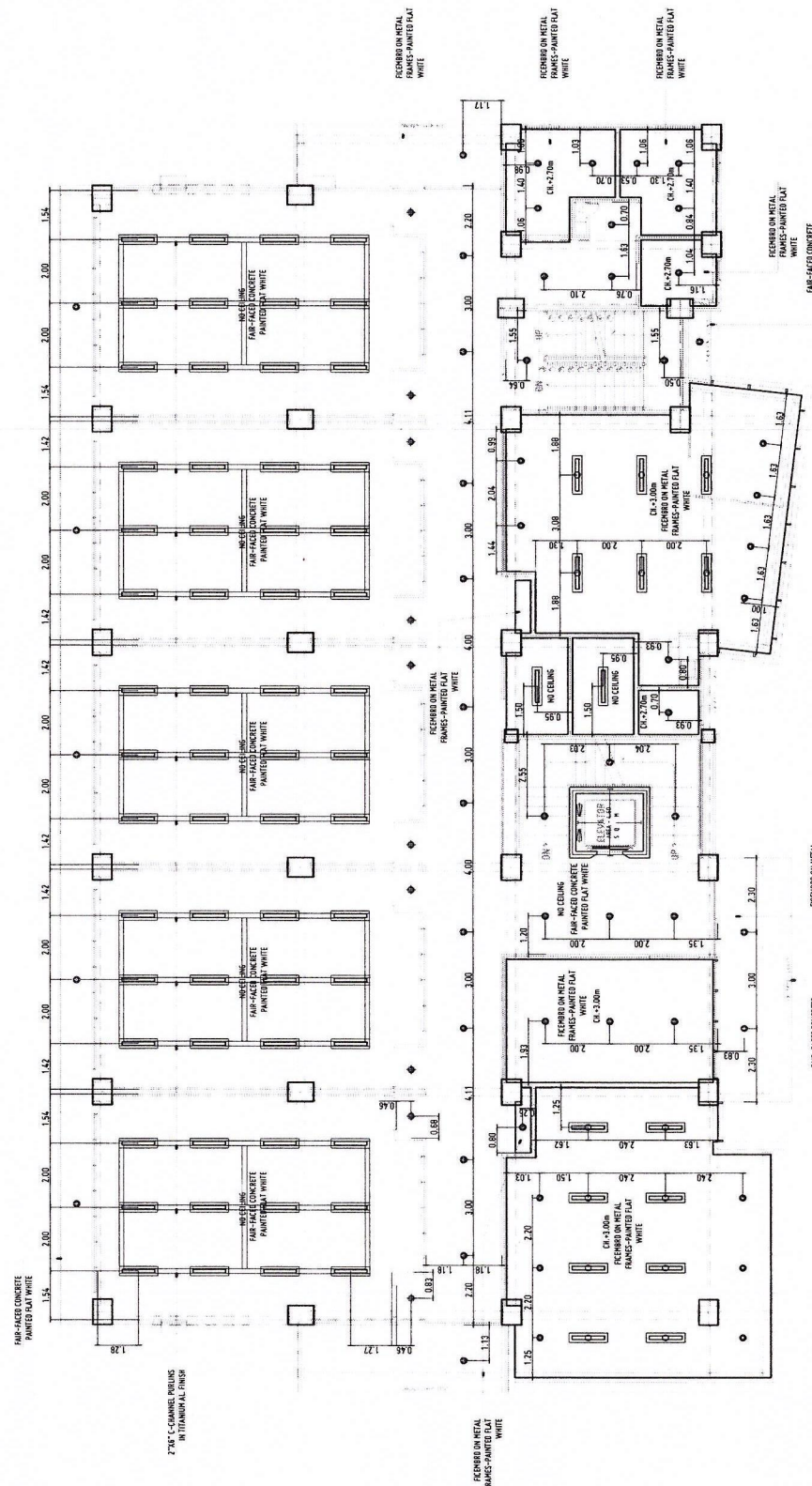
- IMPORTANT NOTES:
1. CHECK AND VERIFY ACTUAL SITE CONDITION BEFORE CONSTRUCTION. CHECK AND REVIEW PLANS, AND IF THERE ARE CONFLICTS BETWEEN DRAWINGS, BOQ, BOB, AND TECHNICAL SPECIFICATIONS, REFER THE UPPO THRU RFP BEFORE PROCUREMENT AND INSTALLATION OF CERTAIN ITEMS AND MATERIALS.
 2. BEFORE INSTALLATION OF MATERIALS, ESPECIALLY ARCHITECTURAL FINISHES OF MATERIALS THAT WILL GREATLY AFFECT THE CONSTRUCTION, INFORM THE UPPO THRU RFP FOR INFORMATION AND BOQ FOR MATERIAL APPROVALS BEFORE PROCUREMENT AND INSTALLATION OF CERTAIN ITEMS AND MATERIALS.
 3. FOR ANY CONFLICT BETWEEN ARCHITECTURAL PLANS AND OTHER UTILITIES, INFORM THE UPPO DESIGN ARCHITECT AND/OR ENGINEERS TO RESOLVE DESIGN ISSUE.

FOURTH FLOOR PLAN-REFLECTED CEILING PLAN-for future development

SCALE: 1:100 MTS



- LEGEND:
- 12 WATTS LED PM LIGHT
 - 18W LED RECESSED CEILING MOUNTED LIGHT
 - 18W LED LIGHT WITH INDUSTRIAL HOUSING AND SUPPORT
 - 1-23W T8 LED FLUORESCENT LIGHT MOUNTED TYPE WITH INDUSTRIAL HOUSING AND SUPPORT
 - 1-23W T8 LED FLUORESCENT LIGHT RECESSED TYPE WITH INDUSTRIAL HOUSING AND SUPPORT

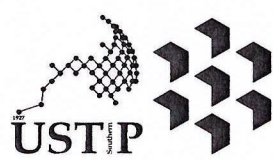
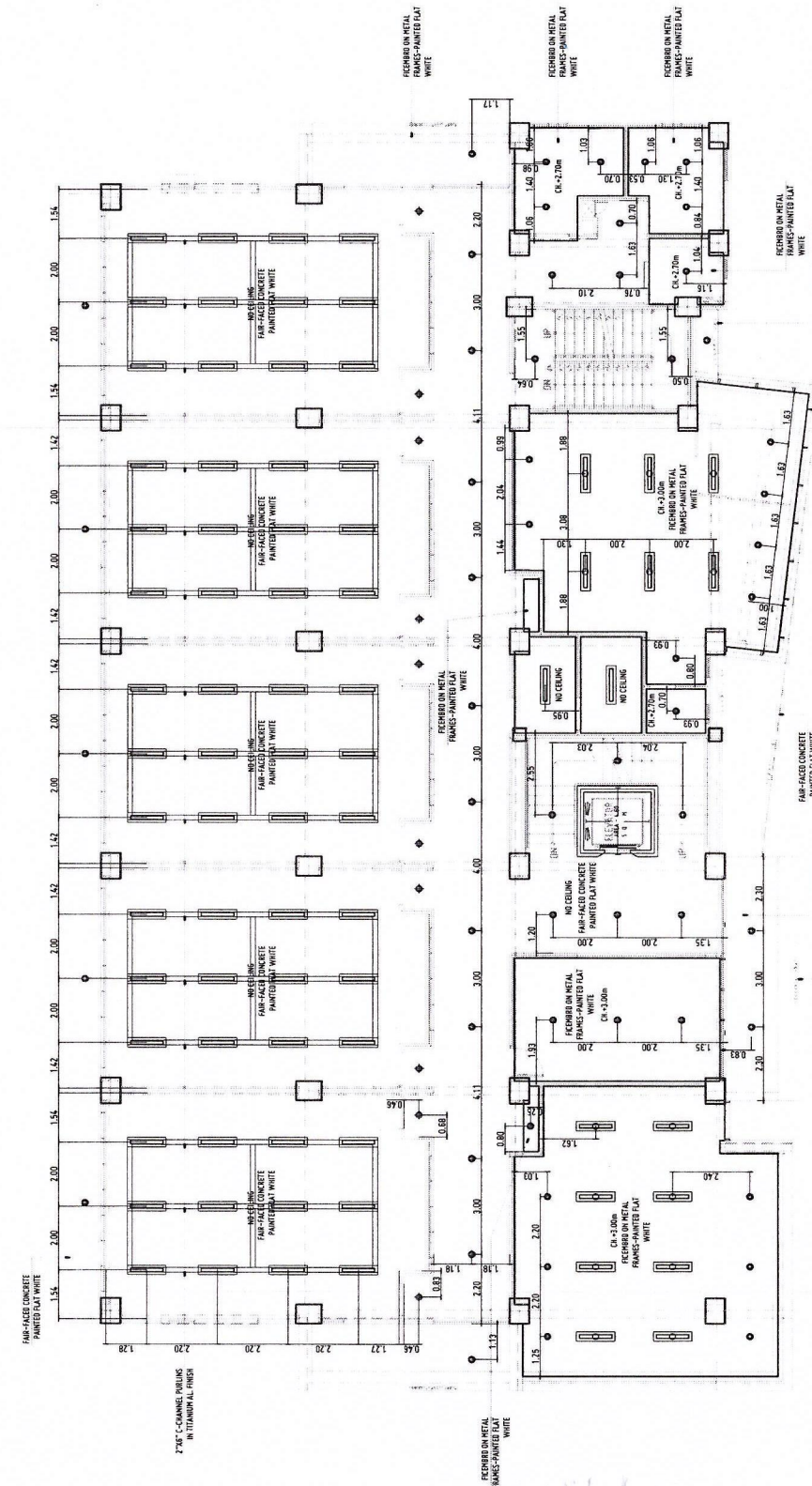


THIRD FLOOR PLAN-REFLECTED CEILING PLAN-for future development

SCALE: 1:100 MTS



- LEGEND:
- 12 WATTS LED PM LIGHT
 - 18W LED RECESSED CEILING MOUNTED LIGHT
 - 18W LED LIGHT WITH INDUSTRIAL HOUSING AND SUPPORT
 - 1-23W T8 LED FLUORESCENT LIGHT MOUNTED TYPE WITH INDUSTRIAL HOUSING AND SUPPORT
 - 1-23W T8 LED FLUORESCENT LIGHT RECESSED TYPE WITH INDUSTRIAL HOUSING AND SUPPORT



REPUBLIC OF THE PHILIPPINES
UNIVERSITY OF SCIENCE AND TECHNOLOGY OF SOUTHERN PHILIPPINES
CAGAYAN DE ORO CAMPUS
INFRASTRUCTURE PLANNING AND FACILITY DEVELOPMENT UNIT
CLARO M. RETIO AVENUE, LAPASAN, CAGAYAN DE ORO CITY 9000
TELEPHONE # (08822) 72-40-85 / (088) 856-1138 / 856-1139 | TELE FAX (088) 856-4498
WEBSITE: www.ustp.edu.ph

FERNANDO A. DUMPA
ARCHITECT OF RECORD
PRC NO. 014329 PPR NO. 5420120-A
DATE: 02-19-2025
TIN NO. 185-892-837 PLACE: CAGAYAN DE ORO

PROJECT: CONSTRUCTION OF 21ST CENTURY CLASSROOM BUILDINGS PHASE III, VILLANUEVA CAMPUS
LOCATION: USTP VILLANUEVA CAMPUS, MISAMIS ORIENTAL
OWNER: UNIVERSITY OF SCIENCE AND TECHNOLOGY OF SOUTHERN PHILIPPINES

RECOMMENDING APPROVAL:
ENGR. GRACE C. BABA
DIRECTOR, IPFDD

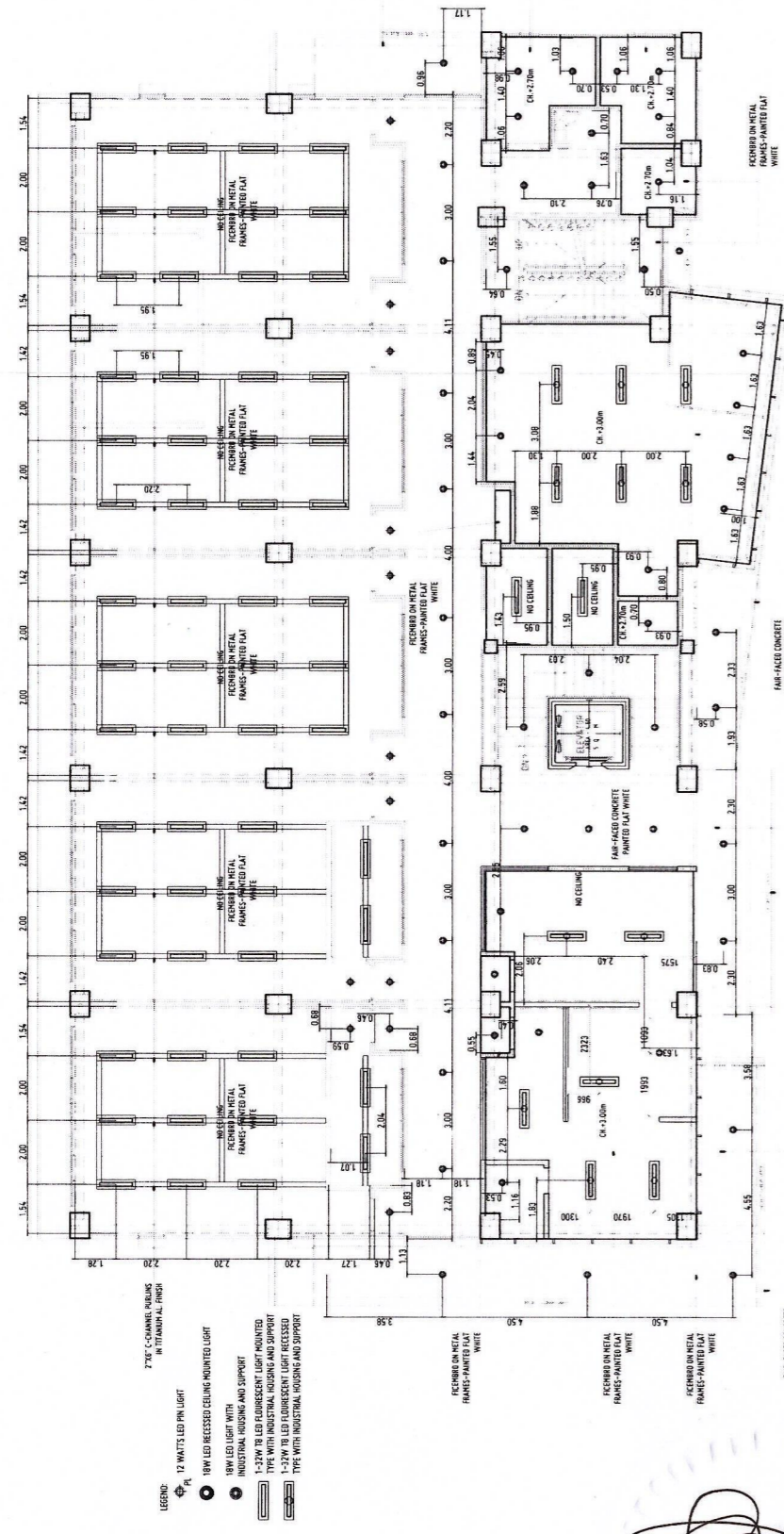
RECOMMENDING APPROVAL:
ATTY. ERWIN B. BUCIO
FOR ADMINISTRATION & LEGAL AFFAIRS

APPROVED BY:
DR. AMBROSIO B. CULTURA II
PRESIDENT, USTP SYSTEM

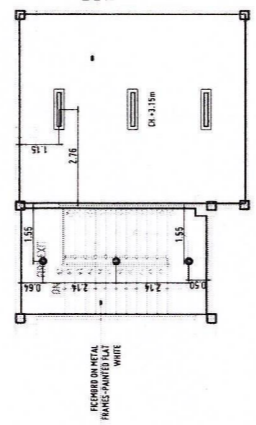
SHEET CONTENTS:
THIRD AND FOURTH RCP

DRAWN BY:
KRU, JZOP
DATE DRAWN:
SEPTEMBER 2025
FNT:

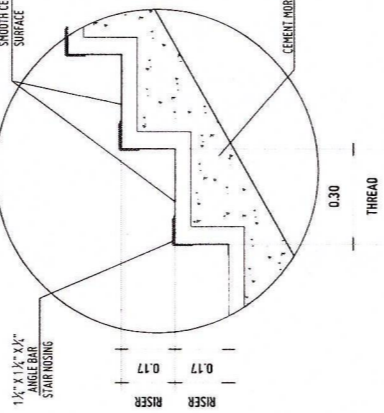
A15



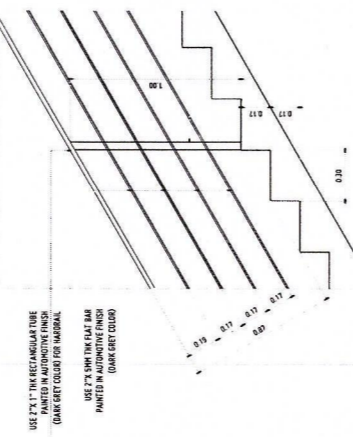
FIFTH FLOOR PLAN - REFLECTED CEILING PLAN-for future development
SCALE: 1:100 MTS



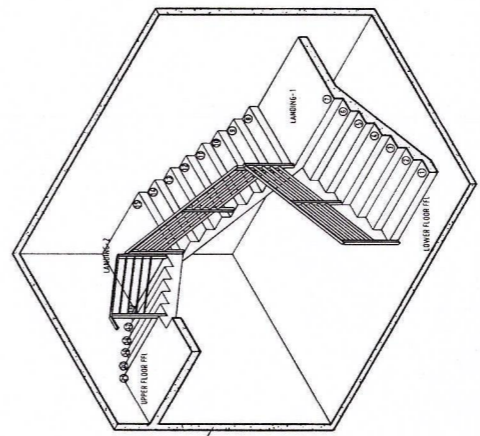
ROOF DECK PLAN
SCALE: 1:100 MTS



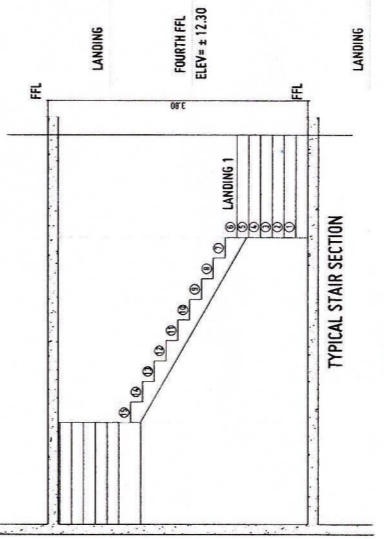
TYPICAL STAIR NOSING DETAIL
SCALE: 1:10 MTS



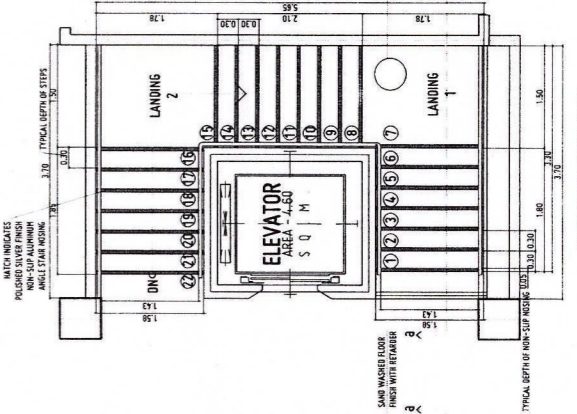
MAIN STAIR RAILING DETAIL
SCALE: 1:20 MTS



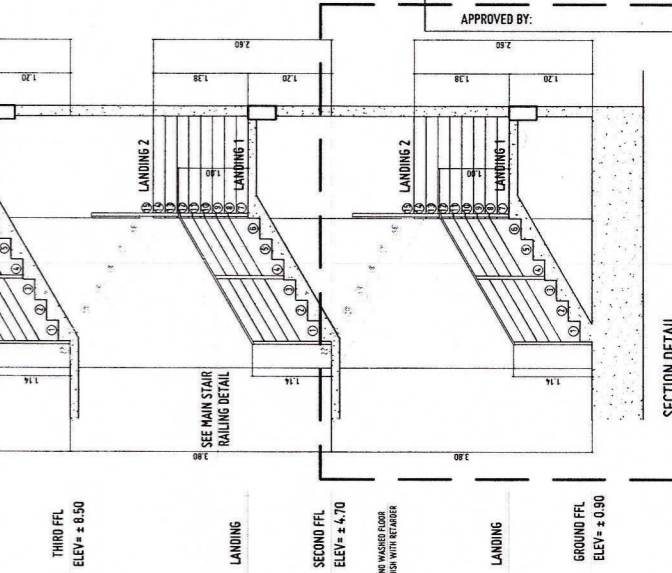
MAIN STAIR ISOMETRIC VIEW
SCALE: NDIS



TYPICAL STAIR SECTION
SCALE: 1:10 MTS

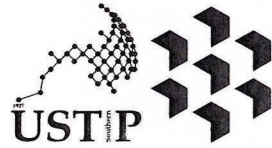
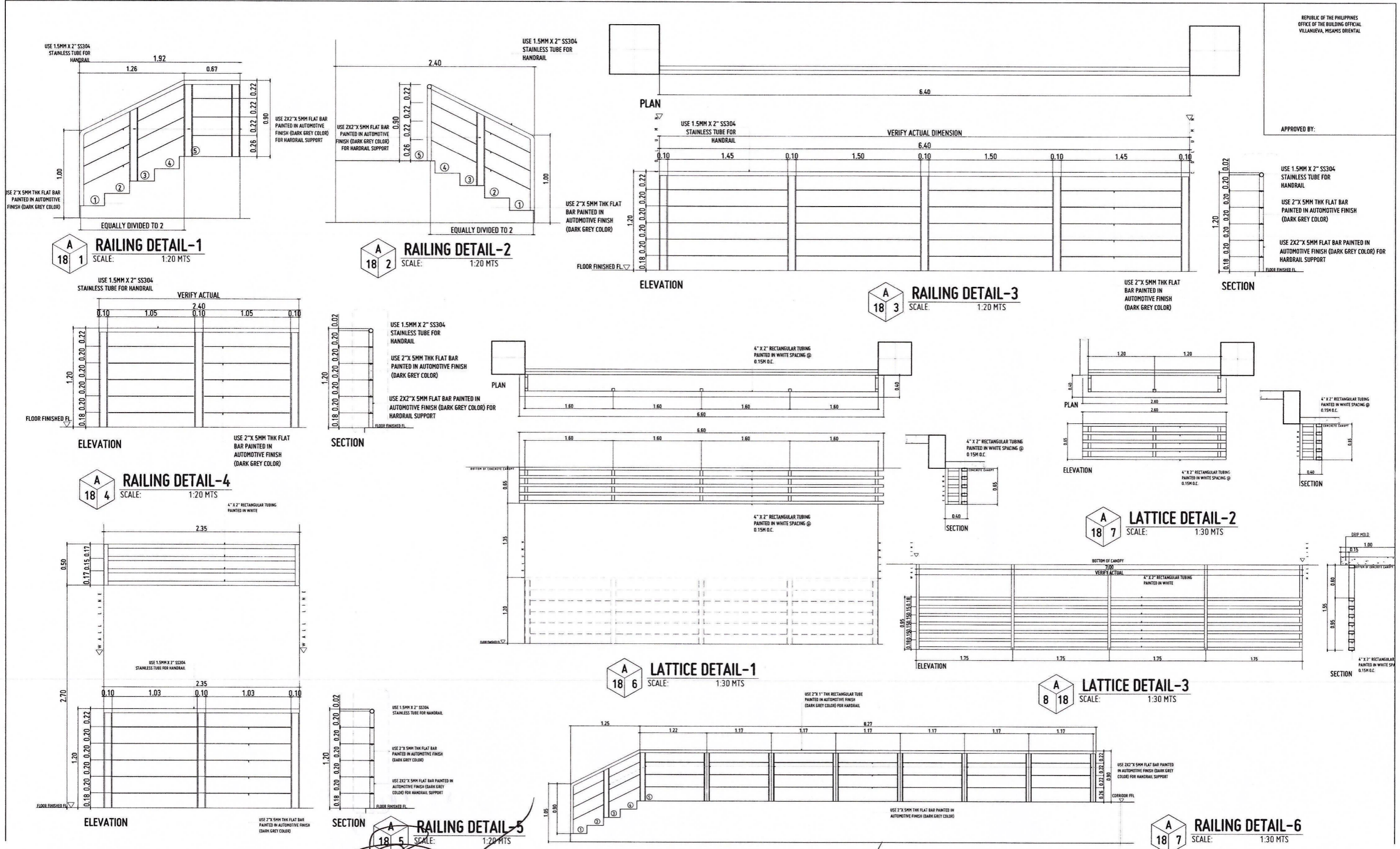


TYPICAL GROUND-FOURTH FLOOR STAIR PLAN
SCALE: 1:50 MTS



SECTION DETAIL

APPROVED BY:



REPUBLIC OF THE PHILIPPINES
UNIVERSITY OF SCIENCE AND TECHNOLOGY OF SOUTHERN PHILIPPINES
INFRASTRUCTURE PLANNING AND FACILITY DEVELOPMENT UNIT
CLARO M. RECTO AVENUE, LAPASAN, CAGAYAN DE ORO CITY 9000
TELEPHONE # (08822) 72-60-65 / (0880) 856-1738 / 856-1739 | TELE FAX (0880) 856-4886
WEBSITE: www.ustp.edu.ph

ARCHITECT OF RECORD
PRC NO. 01332
TIN NO. 185-092-83
DATE: 02-19-2025
PLACE: CAGAYAN DE ORO

PROJECT
CONSTRUCTION OF 21ST CENTURY CLASSROOM BUILDINGS PHASE III,
VILLANUEVA CAMPUS
UNIVERSITY OF SCIENCE AND TECHNOLOGY OF SOUTHERN PHILIPPINES

LOCATION
USTP VILLANUEVA CAMPUS, MISAMIS ORIENTAL

OWNER
UNIVERSITY OF SCIENCE AND TECHNOLOGY OF SOUTHERN PHILIPPINES

RECOMMENDING APPROVAL:
ENGR. GRACE C. BABA
DIRECTOR, IPFDO

RECOMMENDING APPROVAL:
ATY. ERWIN B. BUCIO
VP FOR ADMINISTRATION & LEGAL AFFAIRS

APPROVED BY:
DR. AMBROSIO B. CULTURA II
PRESIDENT, USTP SYSTEM

SHEET CONTENTS:
RAILING AND LATTICE DETAILS

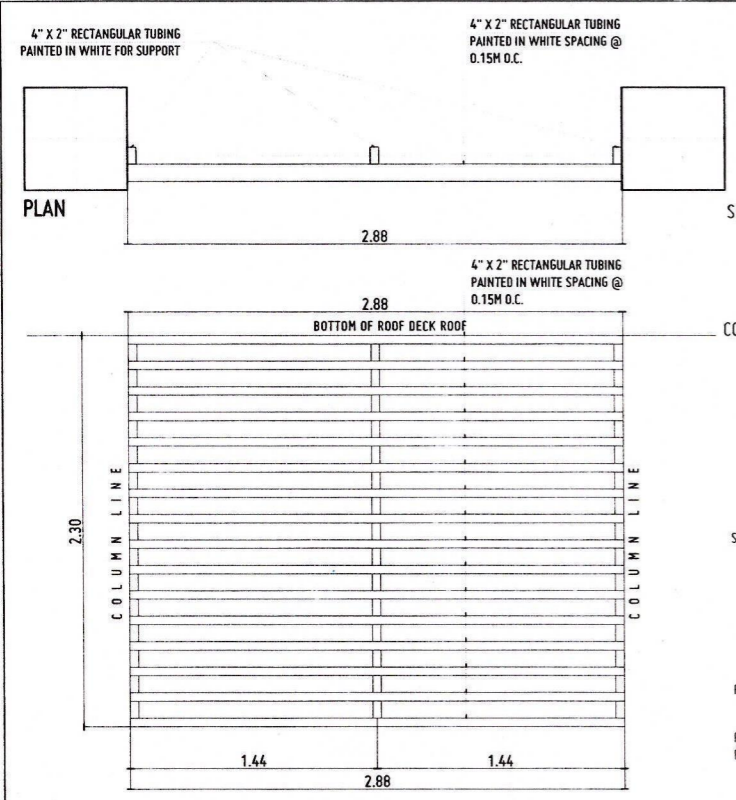
DRAWN BY:
KRII, JZDP

DATE DRAWN:
SEPTEMBER 2025

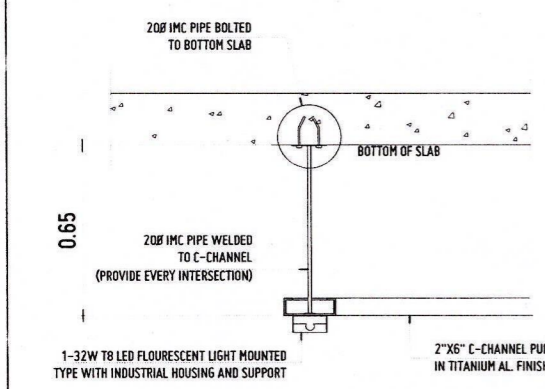
FNT:

A18

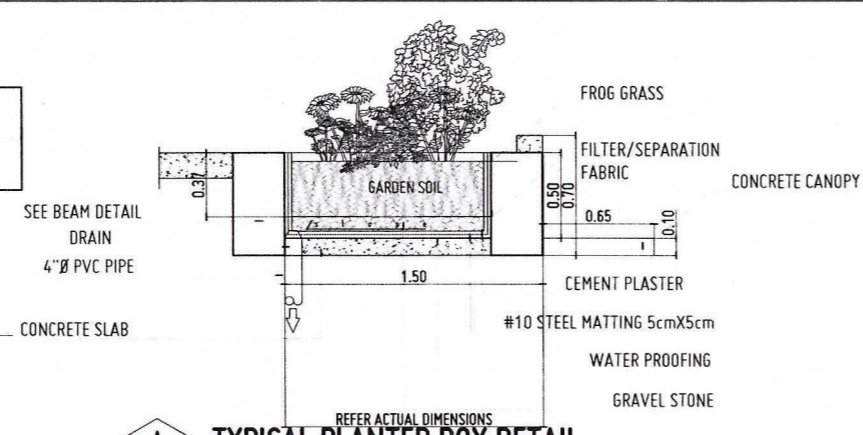
APPROVED BY:



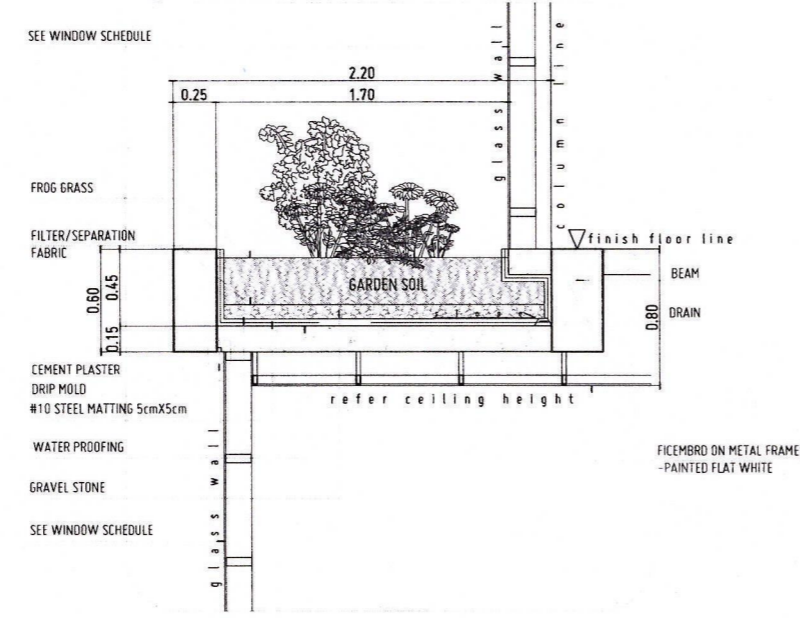
A 19 1 VENT GRILLE DETAIL
SCALE: 1:20 MTS



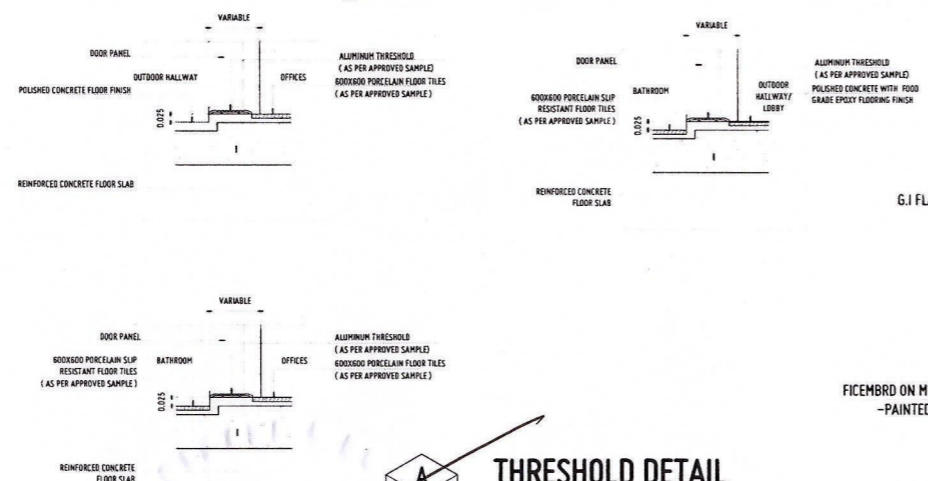
A 19 2 DROP LIGHT DETAIL
SCALE: 1:10 MTS



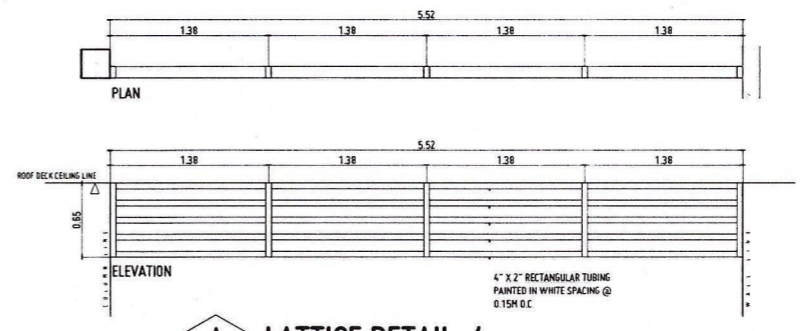
A 19 3 TYPICAL PLANTER BOX DETAIL
SCALE: 1:20 MTS



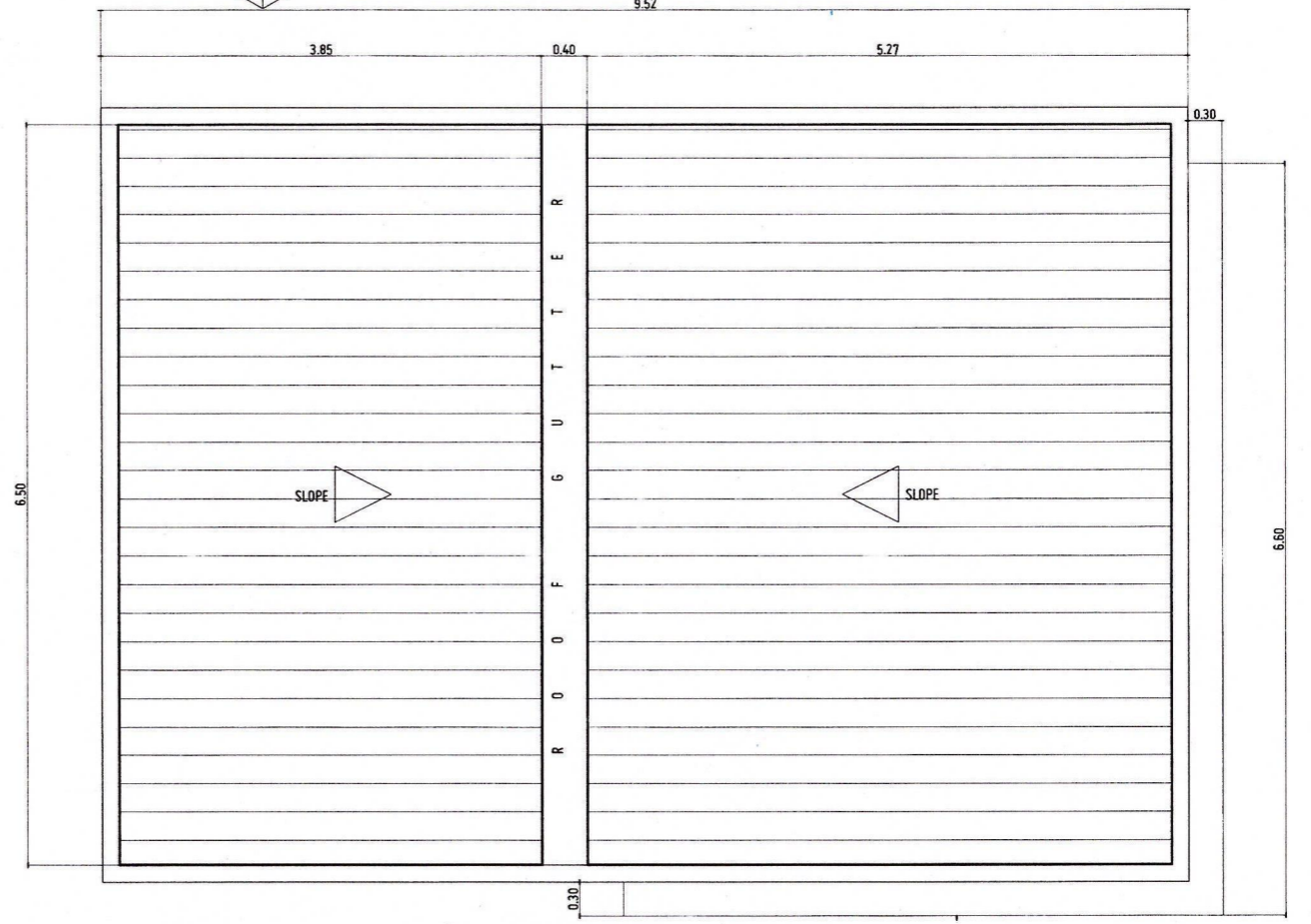
A 19 4 PLANTER BOX DETAIL-2
SCALE: 1:20 MTS



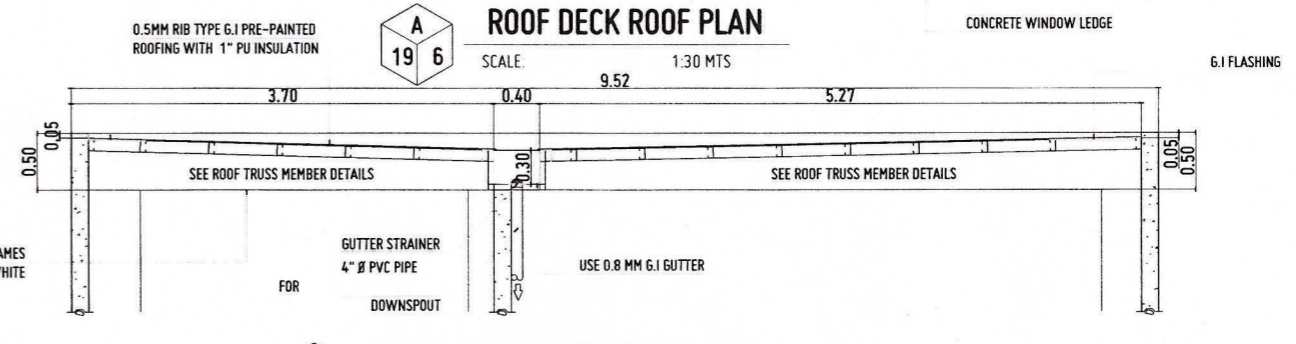
A 19 5 THRESHOLD DETAIL
SCALE: 1:10 MTS



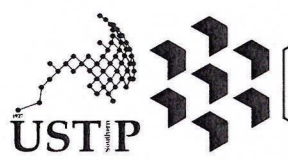
A 19 6 LATTICE DETAIL-4
SCALE: 1:30 MTS



A 19 6 ROOF DECK ROOF PLAN
SCALE: 1:30 MTS



A 19 7 ROOF DECK ROOF SECTION DETAIL
SCALE: 1:30 MTS



REPUBLIC OF THE PHILIPPINES
UNIVERSITY OF SCIENCE AND TECHNOLOGY OF SOUTHERN PHILIPPINES
CAGAYAN DE ORO CAMPUS
INFRASTRUCTURE PLANNING AND FACILITY DEVELOPMENT UNIT
CLARO M. RECTO AVENUE, LAPASAN, CAGAYAN DE ORO CITY 9000
TELEPHONE # (0882) 712-80-85 / (088) 856-1738 / 455-1739 | TEL FAX (088) 856-4656
WEBSITE: www.ustp.edu.ph

FERDINAND A. DUMPA
ARCHITECT OF RECORD
PROJECT: CONSTRUCTION OF 21ST CENTURY CLASSROOM BUILDINGS PHASE III, VILLANUEVA CAMPUS
LOCATION: USTP VILLANUEVA CAMPUS, MISAMIS ORIENTAL
OWNER: UNIVERSITY OF SCIENCE AND TECHNOLOGY OF SOUTHERN PHILIPPINES

RECOMMENDING APPROVAL:
ENGR. GRACE C. BABA
DIRECTOR, IPFDD

RECOMMENDING APPROVAL:
ATTY. ERWIN B. BUCIO
VP FOR ADMINISTRATION & LEGAL AFFAIRS

APPROVED BY:
DR. AMBROSIO B. CULTURA II
PRESIDENT, USTP SYSTEM

SHEET CONTENTS:
VENT GRILLE DETAIL
DROP LIGHT DETAIL
TYPICAL PLANTER BOX DETAIL
PLANTER BOX DETAIL-2
THRESHOLD DETAIL
ROOF DECK ROOF PLAN
ROOF DECK ROOF SECTION DETAIL

DRAWN BY:
KRU, JZOP
DATE DRAWN:
SEPTEMBER 2025
FNT: