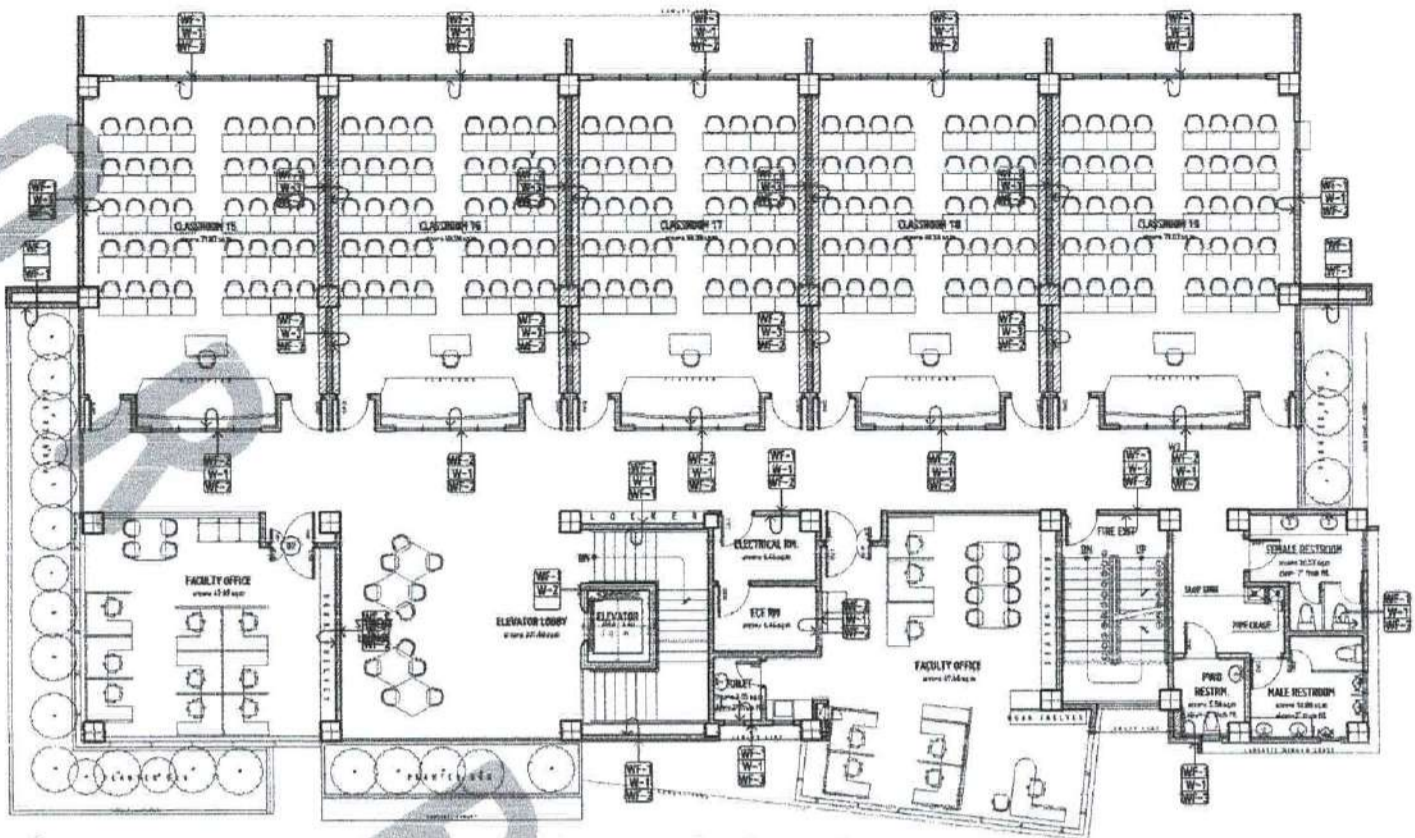


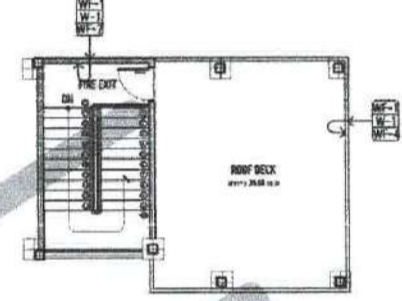
WALL FINISHES	
MARK	DESCRIPTION
WF-1	PLASTER OF PARIS (POP) FINISH, INTERIOR WALLS
WF-2	PLASTER OF PARIS (POP) FINISH, EXTERIOR WALLS
WF-3	PLASTER OF PARIS (POP) FINISH, INTERIOR WALLS, WITH WATERPROOFING
WF-4	PLASTER OF PARIS (POP) FINISH, INTERIOR WALLS, WITH WATERPROOFING AND INSULATION
WF-5	PLASTER OF PARIS (POP) FINISH, INTERIOR WALLS, WITH WATERPROOFING AND INSULATION, WITH GLASS BLOCK
WF-6	PLASTER OF PARIS (POP) FINISH, INTERIOR WALLS, WITH WATERPROOFING AND INSULATION, WITH GLASS BLOCK AND GLASS CURTAIN WALL
WF-7	PLASTER OF PARIS (POP) FINISH, INTERIOR WALLS, WITH WATERPROOFING AND INSULATION, WITH GLASS BLOCK AND GLASS CURTAIN WALL, WITH ALUMINUM CURTAIN WALL
WF-8	PLASTER OF PARIS (POP) FINISH, INTERIOR WALLS, WITH WATERPROOFING AND INSULATION, WITH GLASS BLOCK AND GLASS CURTAIN WALL, WITH ALUMINUM CURTAIN WALL AND GLASS BLOCK

PARTITION	
MARK	DESCRIPTION
PF-1	FORMER BRICK AND PLASTER PARTITION WALLS
PF-2	GLASS WALL
PF-3	GLASS WALL
PF-4	GLASS WALL WITH WATERPROOFING AND INSULATION
PF-5	GLASS WALL WITH WATERPROOFING AND INSULATION, WITH ALUMINUM CURTAIN WALL
PF-6	GLASS WALL WITH WATERPROOFING AND INSULATION, WITH ALUMINUM CURTAIN WALL AND GLASS BLOCK

DRAWING SYMBOLS	
SYMBOL	DESCRIPTION
(Symbol)	CEILING FINISHES
(Symbol)	FLOOR FINISHES
(Symbol)	WALL FINISHES
(Symbol)	WALL FINISHES
(Symbol)	WALL FINISHES

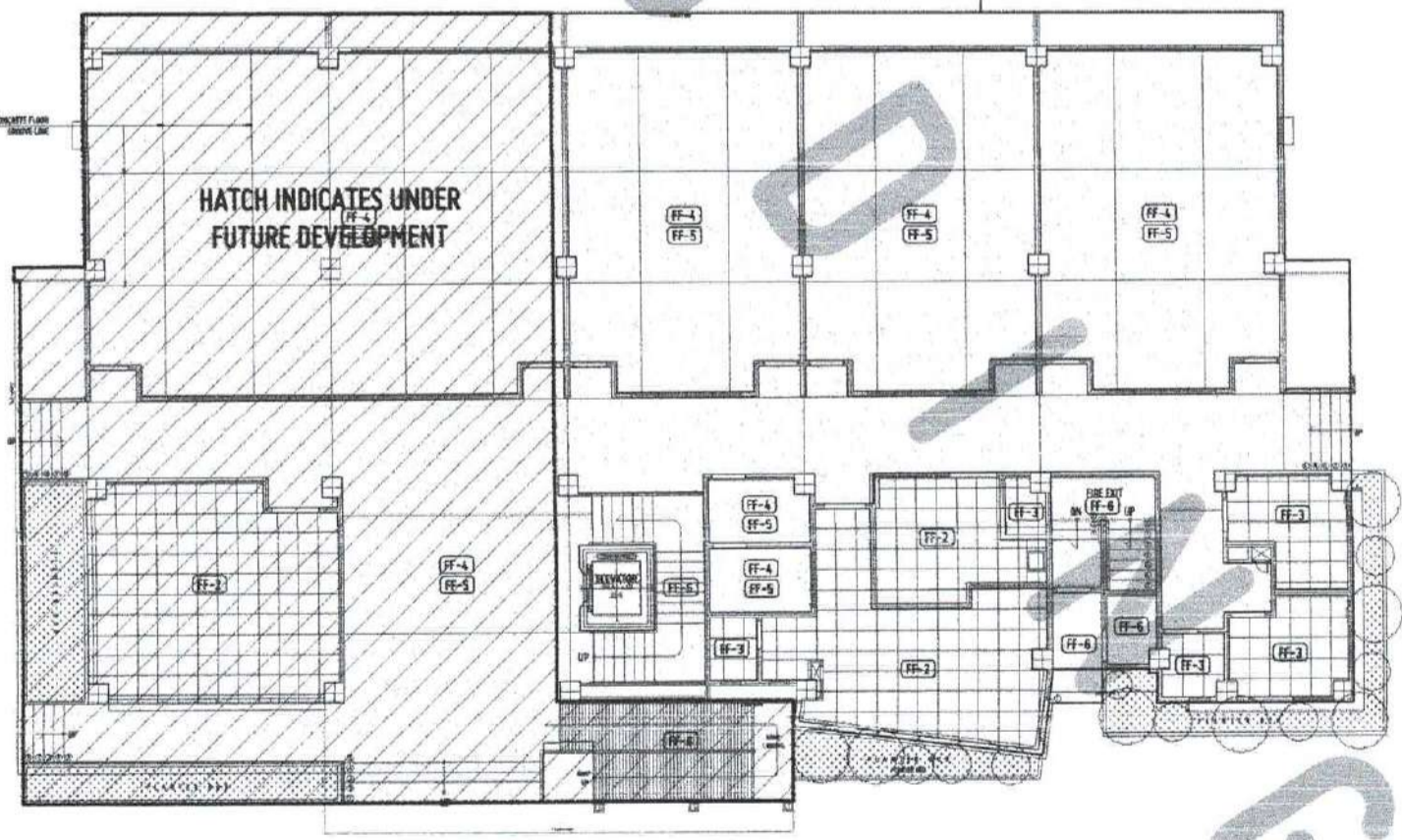


FIFTH FLOOR PLAN - WALL FINISHES - for future development
 SCALE: 1:100 MTS



ROOF DECK PLAN
 SCALE: 1:100 MTS

FLOOR FINISHES	
MARK	DESCRIPTION
FF-1	CONCRETE SLAB FINISH, INTERIOR FLOORS
FF-2	CONCRETE SLAB FINISH, EXTERIOR FLOORS
FF-3	CONCRETE SLAB FINISH, INTERIOR FLOORS, WITH WATERPROOFING
FF-4	CONCRETE SLAB FINISH, INTERIOR FLOORS, WITH WATERPROOFING AND INSULATION
FF-5	CONCRETE SLAB FINISH, INTERIOR FLOORS, WITH WATERPROOFING AND INSULATION, WITH CERAMIC TILE
FF-6	CONCRETE SLAB FINISH, INTERIOR FLOORS, WITH WATERPROOFING AND INSULATION, WITH CERAMIC TILE AND POLISHED CONCRETE
FF-7	CONCRETE SLAB FINISH, INTERIOR FLOORS, WITH WATERPROOFING AND INSULATION, WITH CERAMIC TILE AND POLISHED CONCRETE, WITH ALUMINUM CURTAIN WALL
FF-8	CONCRETE SLAB FINISH, INTERIOR FLOORS, WITH WATERPROOFING AND INSULATION, WITH CERAMIC TILE AND POLISHED CONCRETE, WITH ALUMINUM CURTAIN WALL AND GLASS BLOCK



GROUND FLOOR PLAN - FLOOR FINISHES - Phase 1 Construction
 SCALE: 1:100 MTS

REVISIONS:

1. REVISED TO SHOW REVISIONS TO THE PLAN.
2. REVISED TO SHOW REVISIONS TO THE PLAN.
3. REVISED TO SHOW REVISIONS TO THE PLAN.
4. REVISED TO SHOW REVISIONS TO THE PLAN.
5. REVISED TO SHOW REVISIONS TO THE PLAN.
6. REVISED TO SHOW REVISIONS TO THE PLAN.
7. REVISED TO SHOW REVISIONS TO THE PLAN.
8. REVISED TO SHOW REVISIONS TO THE PLAN.
9. REVISED TO SHOW REVISIONS TO THE PLAN.
10. REVISED TO SHOW REVISIONS TO THE PLAN.

APPROVED BY: _____



UNIVERSITY OF SCIENCE AND TECHNOLOGY OF SOUTHERN PHILIPPINES
 INFRASTRUCTURE PLANNING AND FACILITY DEVELOPMENT UNIT
 CAMPUS 2, 3RD FLOOR, JUAN DELA CRUZ DRIVE, DAVAO CITY
 TELEPHONE: (81) 821-4111, 821-4112, 821-4113 | FAX: (81) 821-4114
 WEBSITE: www.ustp.edu.ph

REPUBLIC OF THE PHILIPPINES
 OFFICE OF THE ARCHITECT
 ARCHITECT'S REGISTER NO. 1181
 DATE: 01-24-2024
 PLACE: DAVAO CITY

PROJECT: PROPOSED 21ST CENTURY 5 STOREY CLASSROOM BUILDING
 LOCATION: USTP VILLASANTA CAMPUS, MISAMIS ORIENTAL
 OWNER: UNIVERSITY OF SCIENCE AND TECHNOLOGY OF SOUTHERN PHILIPPINES

RECOMMENDING APPROVAL
 ARCHITECT: **ATTY. ERWIN P. BUENOS**
 DIRECTOR, PROFESSIONAL REGULATION & STANDARDS DIVISION

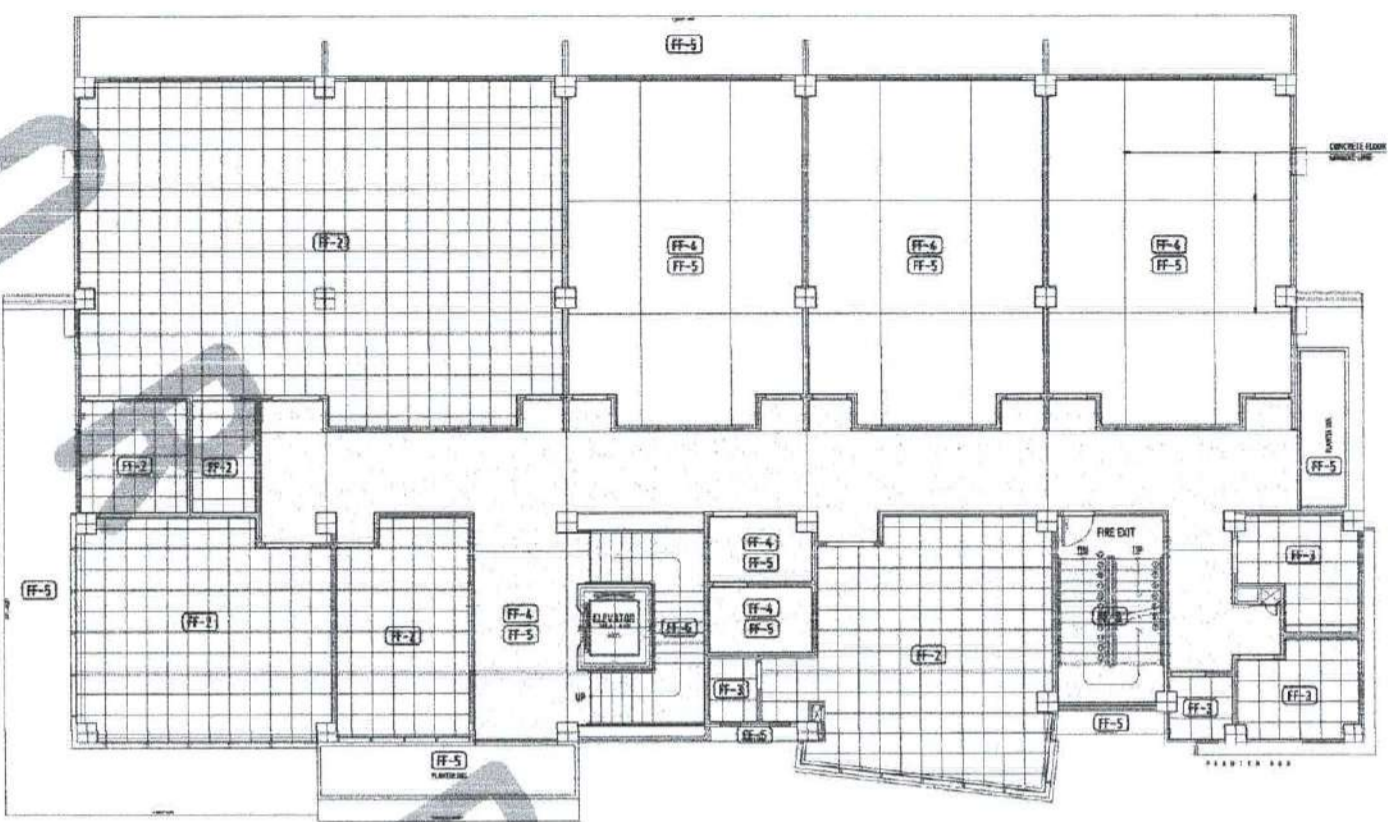
RECOMMENDING APPROVAL
 ARCHITECT: **DR. AMERSON B. CULTURA II**
 PRESIDENT, USTP SYSTEM

APPROVED BY: _____

SHEET CONTENTS:
 SECOND AND THIRD FLOOR FINISHES

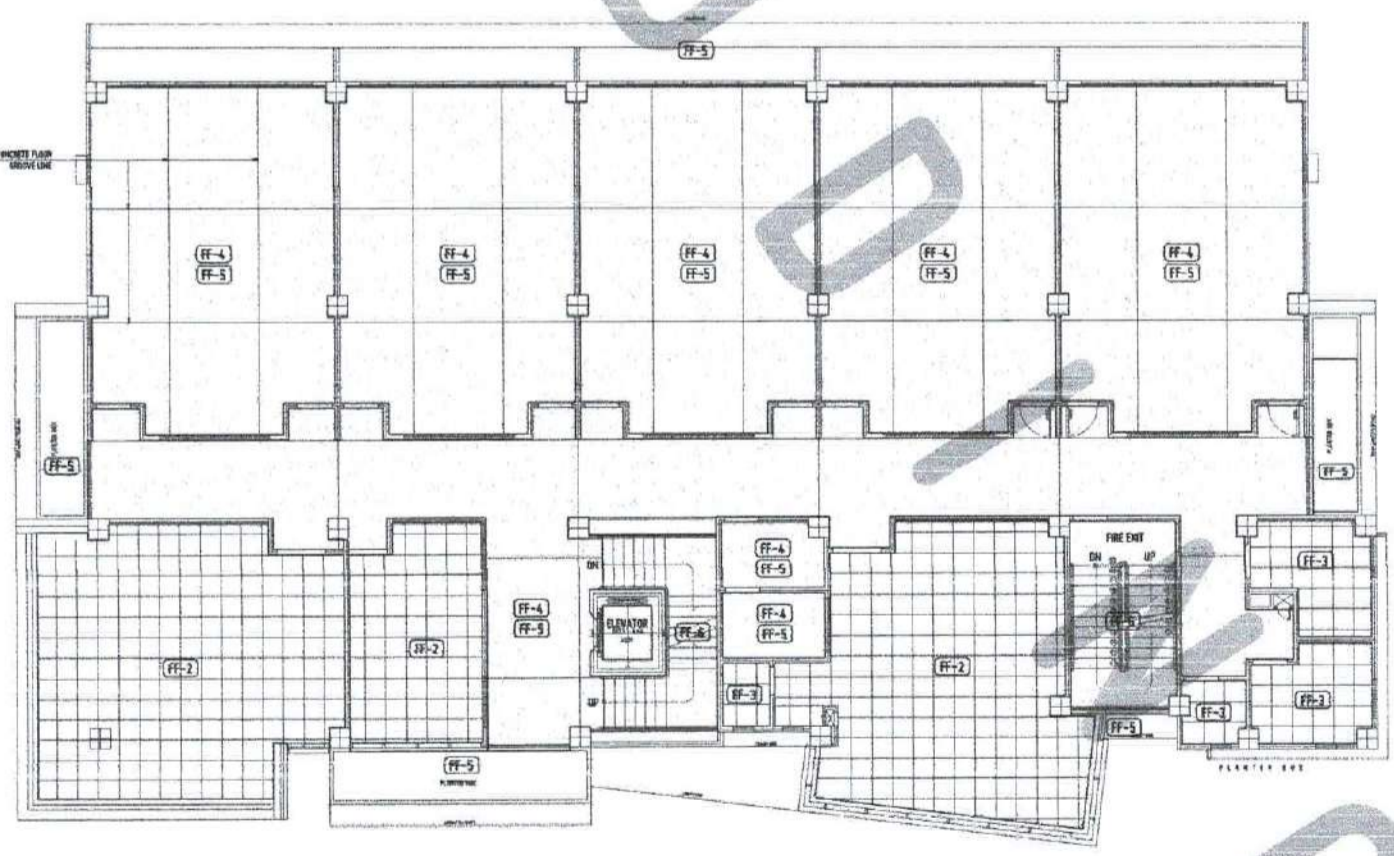
DATE: _____
 SHEET NO.: **A12**

FLOOR FINISHES	
MARK	DESCRIPTION
FF-1	EXPOSED CONCRETE FINISH, POLISHED AND DUSTED WITH POLYURETHANE FINISH
FF-2	EXPOSED CONCRETE FINISH, POLISHED AND DUSTED WITH POLYURETHANE FINISH
FF-3	EXPOSED CONCRETE FINISH, POLISHED AND DUSTED WITH POLYURETHANE FINISH
FF-4	PLAIN CONCRETE FINISH, POLISHED AND DUSTED WITH POLYURETHANE FINISH
FF-5	EXPOSED CONCRETE FINISH, POLISHED AND DUSTED WITH POLYURETHANE FINISH
FF-6	PLAIN CONCRETE FINISH, POLISHED AND DUSTED WITH POLYURETHANE FINISH
FF-7	PLAIN CONCRETE FINISH, POLISHED AND DUSTED WITH POLYURETHANE FINISH
FF-8	PLAIN CONCRETE FINISH, POLISHED AND DUSTED WITH POLYURETHANE FINISH



SECOND FLOOR PLAN-FLOOR FINISHES-for future development
 SCALE: 1:100 MTS

FLOOR FINISHES	
MARK	DESCRIPTION
FF-1	EXPOSED CONCRETE FINISH, POLISHED AND DUSTED WITH POLYURETHANE FINISH
FF-2	EXPOSED CONCRETE FINISH, POLISHED AND DUSTED WITH POLYURETHANE FINISH
FF-3	EXPOSED CONCRETE FINISH, POLISHED AND DUSTED WITH POLYURETHANE FINISH
FF-4	PLAIN CONCRETE FINISH, POLISHED AND DUSTED WITH POLYURETHANE FINISH
FF-5	EXPOSED CONCRETE FINISH, POLISHED AND DUSTED WITH POLYURETHANE FINISH
FF-6	PLAIN CONCRETE FINISH, POLISHED AND DUSTED WITH POLYURETHANE FINISH
FF-7	PLAIN CONCRETE FINISH, POLISHED AND DUSTED WITH POLYURETHANE FINISH
FF-8	PLAIN CONCRETE FINISH, POLISHED AND DUSTED WITH POLYURETHANE FINISH



THIRD FLOOR PLAN-FLOOR FINISHES-for future development
 SCALE: 1:100 MTS

APPROVED BY: _____

REPUBLIC OF THE PHILIPPINES
 OFFICE OF THE ARCHITECT
 VILLASANTA, MISAMIS ORIENTAL

1. TO BE USED IN ACCORDANCE WITH THE NATIONAL BUILDING CODE (NBC) AND OTHER APPLICABLE LAWS, DECREES, REGULATIONS, ORDINANCES, AND LOCAL ORDINANCES.
 2. TO BE USED IN ACCORDANCE WITH THE NATIONAL ELECTRICAL CODE (NEC) AND OTHER APPLICABLE LAWS, DECREES, REGULATIONS, ORDINANCES, AND LOCAL ORDINANCES.
 3. TO BE USED IN ACCORDANCE WITH THE NATIONAL MECHANICAL CODE (NMC) AND OTHER APPLICABLE LAWS, DECREES, REGULATIONS, ORDINANCES, AND LOCAL ORDINANCES.
 4. TO BE USED IN ACCORDANCE WITH THE NATIONAL PLUMBING CODE (NPC) AND OTHER APPLICABLE LAWS, DECREES, REGULATIONS, ORDINANCES, AND LOCAL ORDINANCES.
 5. TO BE USED IN ACCORDANCE WITH THE NATIONAL SANITARY CODE (NSC) AND OTHER APPLICABLE LAWS, DECREES, REGULATIONS, ORDINANCES, AND LOCAL ORDINANCES.
 6. TO BE USED IN ACCORDANCE WITH THE NATIONAL FIRE PROTECTION CODE (NFPC) AND OTHER APPLICABLE LAWS, DECREES, REGULATIONS, ORDINANCES, AND LOCAL ORDINANCES.
 7. TO BE USED IN ACCORDANCE WITH THE NATIONAL SAFETY CODE (NSC) AND OTHER APPLICABLE LAWS, DECREES, REGULATIONS, ORDINANCES, AND LOCAL ORDINANCES.
 8. TO BE USED IN ACCORDANCE WITH THE NATIONAL HEALTH CODE (NHC) AND OTHER APPLICABLE LAWS, DECREES, REGULATIONS, ORDINANCES, AND LOCAL ORDINANCES.
 9. TO BE USED IN ACCORDANCE WITH THE NATIONAL ENVIRONMENTAL CODE (NEC) AND OTHER APPLICABLE LAWS, DECREES, REGULATIONS, ORDINANCES, AND LOCAL ORDINANCES.
 10. TO BE USED IN ACCORDANCE WITH THE NATIONAL OCCUPATIONAL SAFETY AND HEALTH CODE (NOSHA) AND OTHER APPLICABLE LAWS, DECREES, REGULATIONS, ORDINANCES, AND LOCAL ORDINANCES.



UNIVERSITY OF SCIENCE AND TECHNOLOGY OF SOUTHERN PHILIPPINES
 INFRASTRUCTURE PLANNING AND FACILITY DEVELOPMENT UNIT
 CAMPUS 2, SEPTANGI, LAKHAN, CAGAYAN DE ORO CITY
 TELEPHONE: (088) 222-2400; FAX: (088) 222-2400; WEBSITE: www.ustip.edu.ph

REPUBLIC OF THE PHILIPPINES
 OFFICE OF THE PRESIDENT
 MALACANANG, MANILA

PROPOSED 21ST CENTURY 5 STOREY CLASSROOM BUILDING
 USTP WILLAMENA CAMPUS, NEGROS ORIENTAL
 UNIVERSITY OF SCIENCE AND TECHNOLOGY OF SOUTHERN PHILIPPINES

RECOMMENDING OFFICIAL
 ARCHITECTURAL DESIGNER
 DR. ANTONIO M. BARRERA

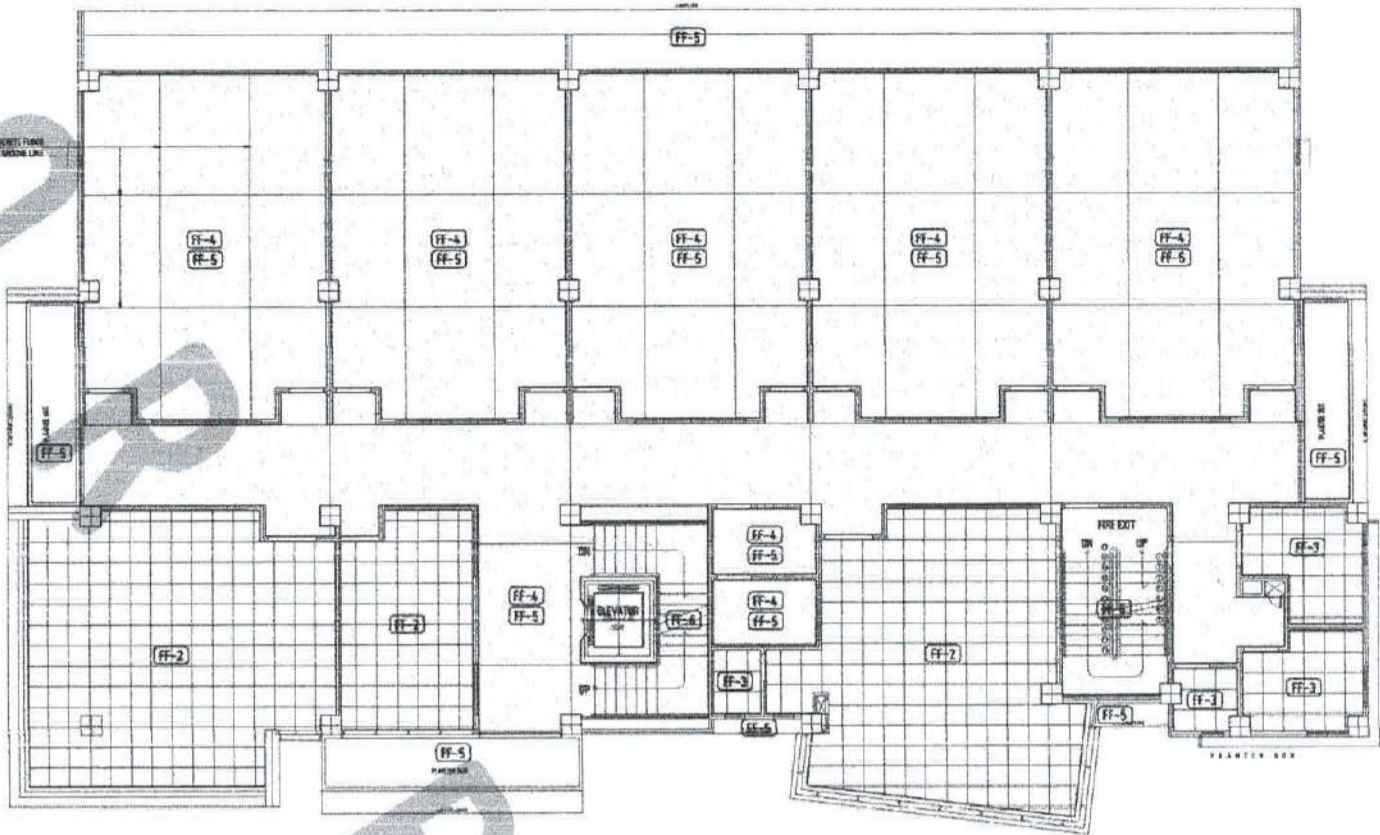
RECOMMENDING APPROVAL
 DR. ANTONIO M. BARRERA
 PRESIDENT, USTP SYSTEM

APPROVED BY
 DR. AMBROSIO M. CULTURA II
 PRESIDENT, USTP SYSTEM

SHEET CONTENTS:
 FOUNDATION AND ROOF DECK
 FLOOR FINISHES

DATE DRAWN:
 10/1/2013
 A13

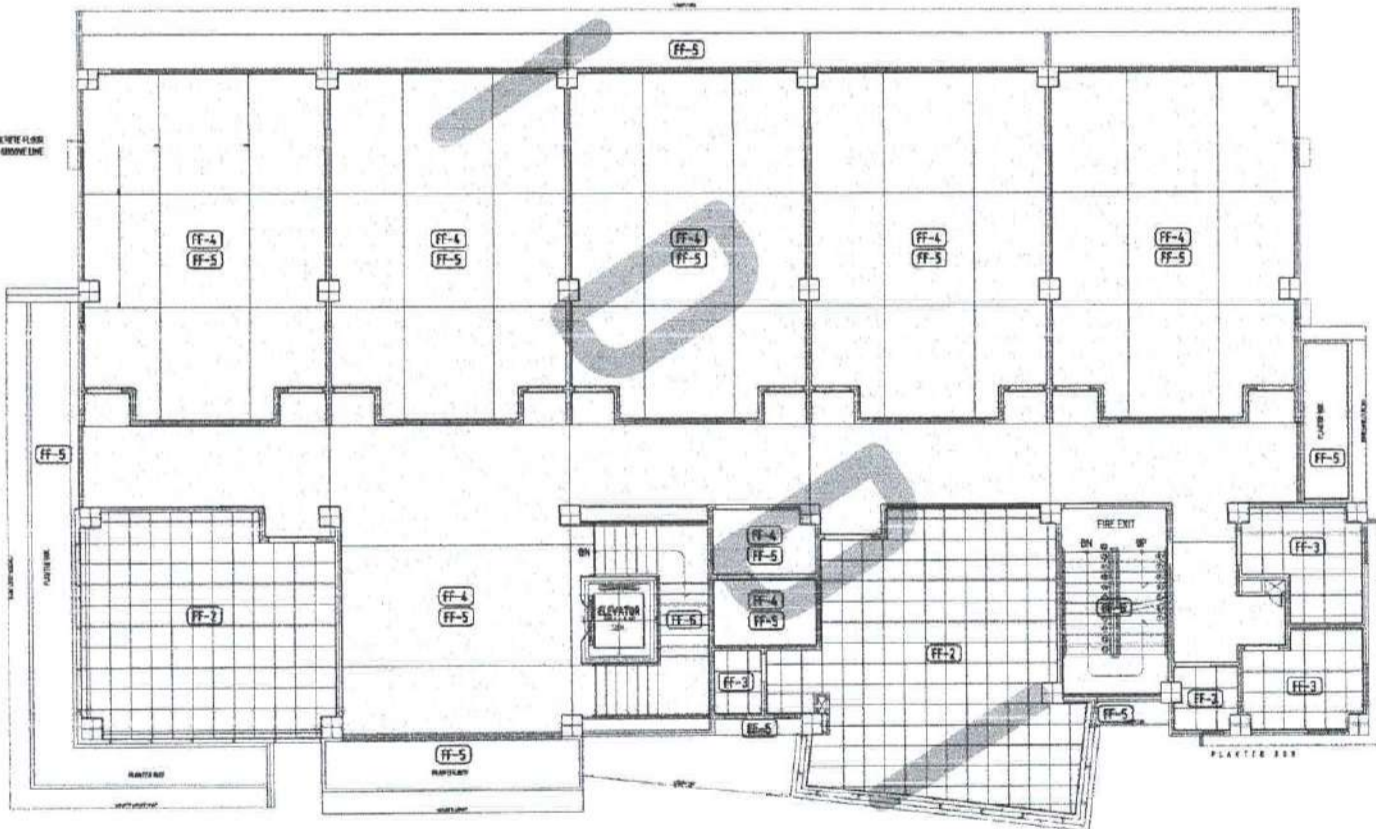
MARK	DESCRIPTION
FF-1	SMOOTH & GLOSS POLISHED, POLISHED CONCRETE FLOOR WITH POLISHED FINISH
FF-2	SMOOTH & GLOSS POLISHED, POLISHED CONCRETE FLOOR WITH POLISHED FINISH
FF-3	SMOOTH & GLOSS POLISHED, POLISHED CONCRETE FLOOR WITH POLISHED FINISH
FF-4	SMOOTH & GLOSS POLISHED, POLISHED CONCRETE FLOOR WITH POLISHED FINISH
FF-5	SMOOTH & GLOSS POLISHED, POLISHED CONCRETE FLOOR WITH POLISHED FINISH
FF-6	SMOOTH & GLOSS POLISHED, POLISHED CONCRETE FLOOR WITH POLISHED FINISH
FF-7	SMOOTH & GLOSS POLISHED, POLISHED CONCRETE FLOOR WITH POLISHED FINISH
FF-8	SMOOTH & GLOSS POLISHED, POLISHED CONCRETE FLOOR WITH POLISHED FINISH



FOURTH FLOOR PLAN-FLOOR FINISHES-for future development

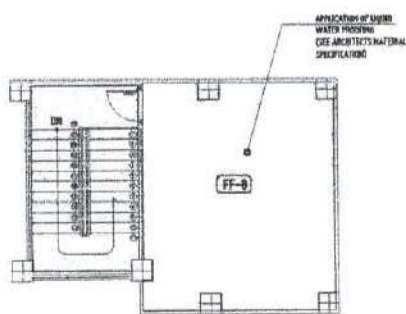
SCALE: 1:100 MTS

MARK	DESCRIPTION
FF-1	SMOOTH & GLOSS POLISHED, POLISHED CONCRETE FLOOR WITH POLISHED FINISH
FF-2	SMOOTH & GLOSS POLISHED, POLISHED CONCRETE FLOOR WITH POLISHED FINISH
FF-3	SMOOTH & GLOSS POLISHED, POLISHED CONCRETE FLOOR WITH POLISHED FINISH
FF-4	SMOOTH & GLOSS POLISHED, POLISHED CONCRETE FLOOR WITH POLISHED FINISH
FF-5	SMOOTH & GLOSS POLISHED, POLISHED CONCRETE FLOOR WITH POLISHED FINISH
FF-6	SMOOTH & GLOSS POLISHED, POLISHED CONCRETE FLOOR WITH POLISHED FINISH
FF-7	SMOOTH & GLOSS POLISHED, POLISHED CONCRETE FLOOR WITH POLISHED FINISH
FF-8	SMOOTH & GLOSS POLISHED, POLISHED CONCRETE FLOOR WITH POLISHED FINISH



FIFTH FLOOR PLAN-FLOOR FINISHES-for future development

SCALE: 1:100 MTS



ROOF DECK PLAN

SCALE: 1:100 MTS

- APPROVED BY:
1. CHECK AND VERIFY ALL THE INFORMATION CONTAINED HEREIN.
 2. CHECK AND VERIFY ALL THE INFORMATION CONTAINED HEREIN.
 3. CHECK AND VERIFY ALL THE INFORMATION CONTAINED HEREIN.
 4. CHECK AND VERIFY ALL THE INFORMATION CONTAINED HEREIN.
 5. CHECK AND VERIFY ALL THE INFORMATION CONTAINED HEREIN.
 6. CHECK AND VERIFY ALL THE INFORMATION CONTAINED HEREIN.
 7. CHECK AND VERIFY ALL THE INFORMATION CONTAINED HEREIN.
 8. CHECK AND VERIFY ALL THE INFORMATION CONTAINED HEREIN.
 9. CHECK AND VERIFY ALL THE INFORMATION CONTAINED HEREIN.
 10. CHECK AND VERIFY ALL THE INFORMATION CONTAINED HEREIN.

REPUBLIC OF THE PHILIPPINES
 OFFICE OF THE BUILDING OFFICIAL
 WILLAMENA, NEGROS ORIENTAL



REPUBLIC OF THE PHILIPPINES
UNIVERSITY OF SCIENCE AND TECHNOLOGY OF SOUTHERN PHILIPPINES
CAGAYAN DE ORO CAMPUS
INFRASTRUCTURE PLANNING AND FACILITY DEVELOPMENT UNIT
CLASSICAL ARCHITECTURE DIVISION
TEL: (082) 71-60-00 / (082) 71-60-1138 / (082) 71-60-1139 | FAX: (082) 71-60-1138
WWW: www.usstp.edu.ph

FERDINAND A. DOLPA
ARCHITECT & DESIGNER
PRACTICE ADDRESS:
UNIT 10-102
FLORANTE BUILDING
193 - 197 - 3 - 7
FLORANTE DRIVE
CITY CENTER
DURAN, CAGAYAN DE ORO CITY

PROPOSED 21ST CENTURY 5 STOREY CLASSROOM BUILDING
USP VALANGUNA CAMPUS, MISAMIS ORIENTAL
UNIVERSITY OF SCIENCE AND TECHNOLOGY OF SOUTHERN PHILIPPINES

RECOMMENDING APPROVAL:
DR. FERDINAND A. DOLPA
ARCHITECT & DESIGNER

RECOMMENDING APPROVAL:
ATTY. ERMIL B. BRICIDO
DR. VP FOR ADMINISTRATION & LEGAL AFFAIRS

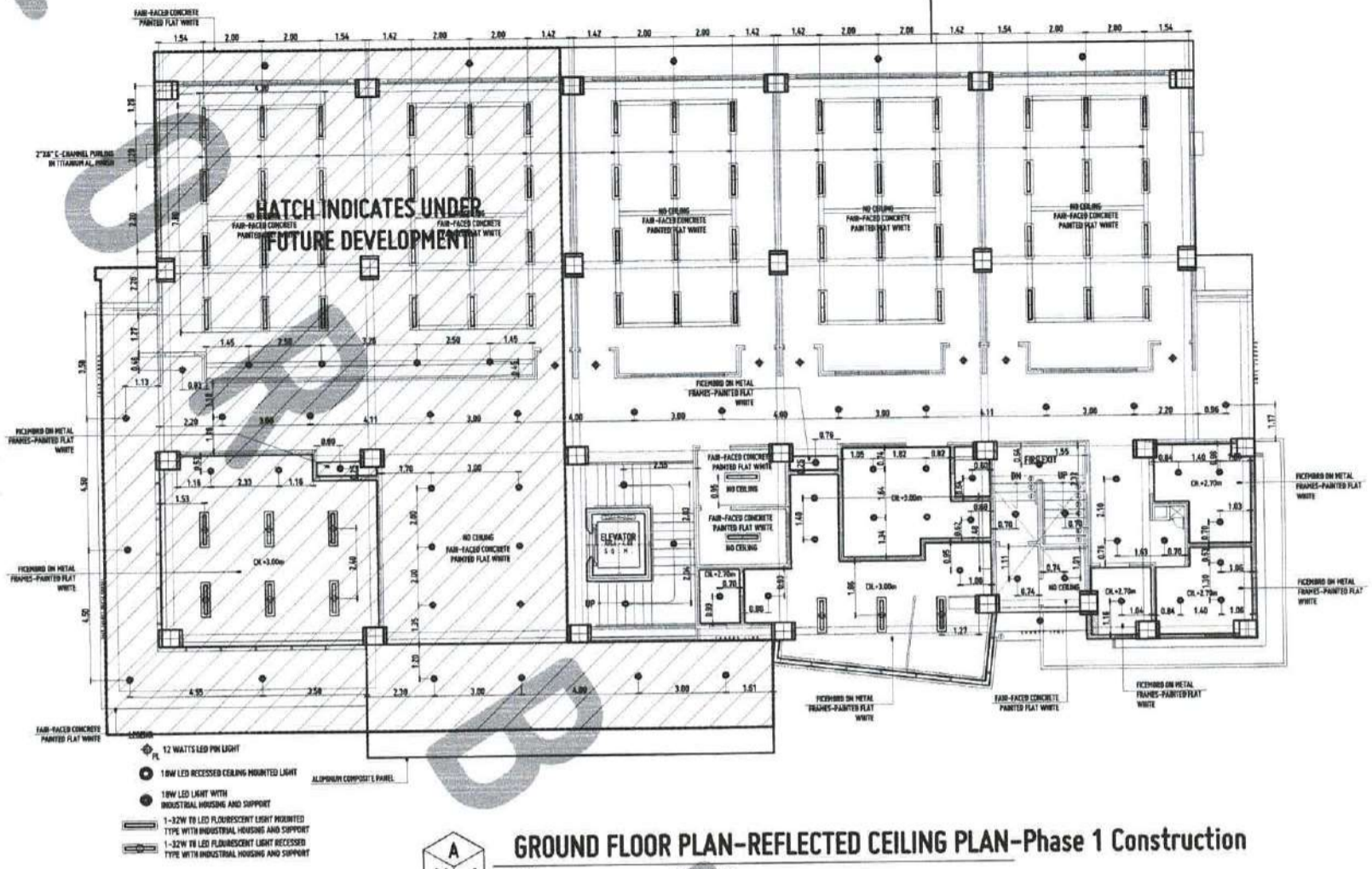
APPROVED BY:
DR. AMBROSIO B. CULTURA II
PRESIDENT, USDP SYSTEM

SHEET CONTENTS:
GROUND AND SECOND FLOOR

DATE DRAWN:
BY:

A14

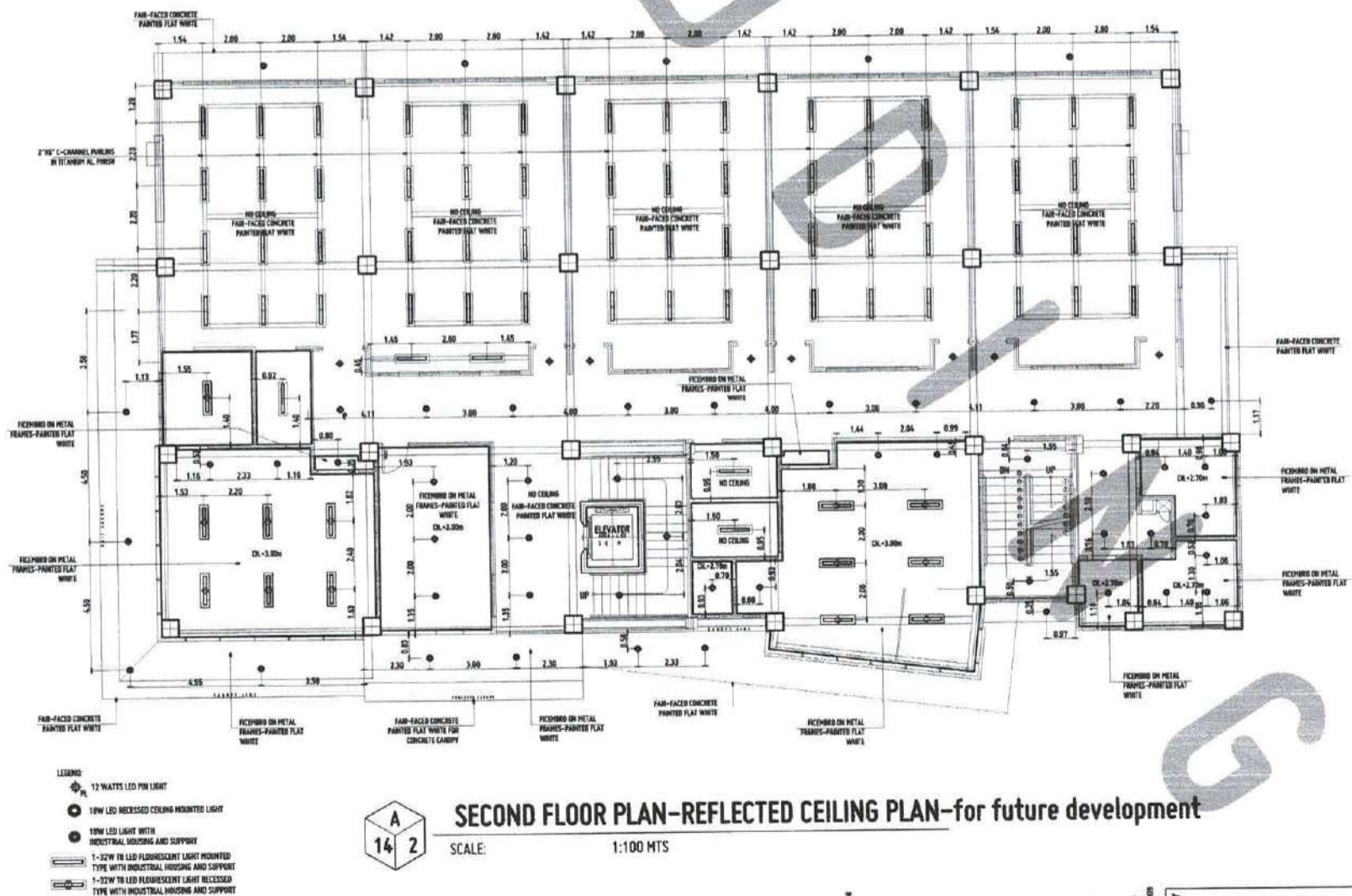
PHASE 1-CONSTRUCTION



A
14
1

GROUND FLOOR PLAN-REFLECTED CEILING PLAN-Phase 1 Construction

SCALE: 1:100 MTS



A
14
2

SECOND FLOOR PLAN-REFLECTED CEILING PLAN-for future development

SCALE: 1:100 MTS

REMARKS:
1. THIS SET OF DRAWINGS IS THE PROPERTY OF THE ARCHITECT AND SHOULD NOT BE REPRODUCED OR TRANSMITTED IN ANY FORM OR BY ANY MEANS, ELECTRONIC OR MECHANICAL, INCLUDING PHOTOCOPYING, RECORDING, OR BY ANY INFORMATION STORAGE AND RETRIEVAL SYSTEM, WITHOUT THE WRITTEN PERMISSION OF THE ARCHITECT.
2. THE ARCHITECT ASSUMES NO LIABILITY FOR ANY DAMAGE TO PERSONS OR PROPERTY ARISING FROM THE USE OF THESE DRAWINGS.
3. THE ARCHITECT ASSUMES NO LIABILITY FOR ANY DAMAGE TO PERSONS OR PROPERTY ARISING FROM THE USE OF THESE DRAWINGS.
4. THE ARCHITECT ASSUMES NO LIABILITY FOR ANY DAMAGE TO PERSONS OR PROPERTY ARISING FROM THE USE OF THESE DRAWINGS.
5. THE ARCHITECT ASSUMES NO LIABILITY FOR ANY DAMAGE TO PERSONS OR PROPERTY ARISING FROM THE USE OF THESE DRAWINGS.
6. THE ARCHITECT ASSUMES NO LIABILITY FOR ANY DAMAGE TO PERSONS OR PROPERTY ARISING FROM THE USE OF THESE DRAWINGS.
7. THE ARCHITECT ASSUMES NO LIABILITY FOR ANY DAMAGE TO PERSONS OR PROPERTY ARISING FROM THE USE OF THESE DRAWINGS.
8. THE ARCHITECT ASSUMES NO LIABILITY FOR ANY DAMAGE TO PERSONS OR PROPERTY ARISING FROM THE USE OF THESE DRAWINGS.
9. THE ARCHITECT ASSUMES NO LIABILITY FOR ANY DAMAGE TO PERSONS OR PROPERTY ARISING FROM THE USE OF THESE DRAWINGS.
10. THE ARCHITECT ASSUMES NO LIABILITY FOR ANY DAMAGE TO PERSONS OR PROPERTY ARISING FROM THE USE OF THESE DRAWINGS.

APPROVED BY:
REPUBLIC OF THE PHILIPPINES
OFFICE OF THE BUILDING OFFICIAL
VALANGUNA, MISAMIS ORIENTAL