

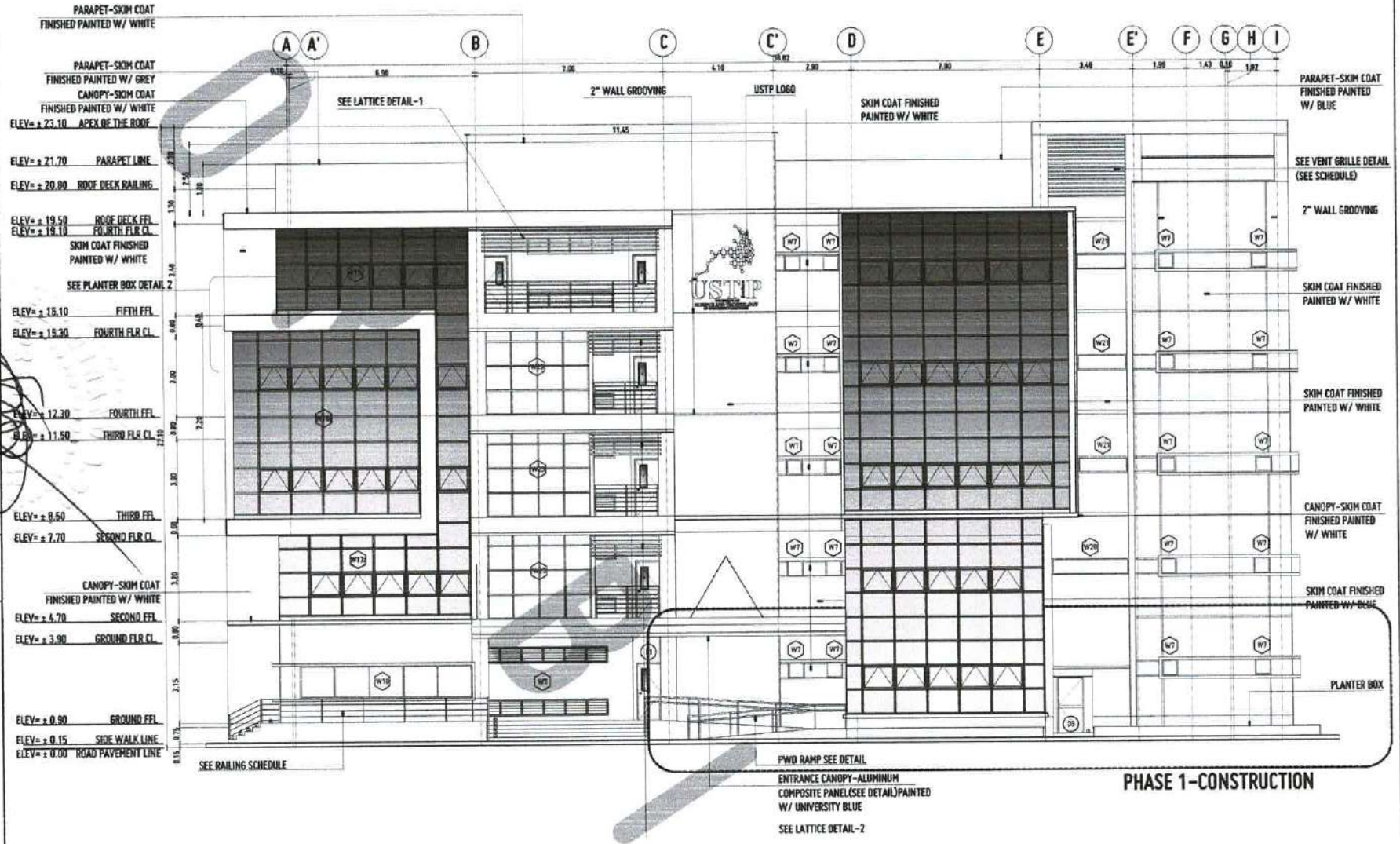


REPUBLIC OF THE PHILIPPINES
 UNIVERSITY OF SCIENCE AND TECHNOLOGY OF SOUTHERN PHILIPPINES
 OFFICE OF THE CHIEF ENGINEER
 INFRASTRUCTURE PLANNING AND FACILITY DEVELOPMENT UNIT
 CLAYTON K. REYES, CHIEF ENGINEER
 TEL: (035) 253-1111 / (035) 253-1112 / (035) 253-1113 / (035) 253-1114 / (035) 253-1115 / (035) 253-1116 / (035) 253-1117 / (035) 253-1118 / (035) 253-1119 / (035) 253-1120 / (035) 253-1121 / (035) 253-1122 / (035) 253-1123 / (035) 253-1124 / (035) 253-1125 / (035) 253-1126 / (035) 253-1127 / (035) 253-1128 / (035) 253-1129 / (035) 253-1130 / (035) 253-1131 / (035) 253-1132 / (035) 253-1133 / (035) 253-1134 / (035) 253-1135 / (035) 253-1136 / (035) 253-1137 / (035) 253-1138 / (035) 253-1139 / (035) 253-1140 / (035) 253-1141 / (035) 253-1142 / (035) 253-1143 / (035) 253-1144 / (035) 253-1145 / (035) 253-1146 / (035) 253-1147 / (035) 253-1148 / (035) 253-1149 / (035) 253-1150 / (035) 253-1151 / (035) 253-1152 / (035) 253-1153 / (035) 253-1154 / (035) 253-1155 / (035) 253-1156 / (035) 253-1157 / (035) 253-1158 / (035) 253-1159 / (035) 253-1160 / (035) 253-1161 / (035) 253-1162 / (035) 253-1163 / (035) 253-1164 / (035) 253-1165 / (035) 253-1166 / (035) 253-1167 / (035) 253-1168 / (035) 253-1169 / (035) 253-1170 / (035) 253-1171 / (035) 253-1172 / (035) 253-1173 / (035) 253-1174 / (035) 253-1175 / (035) 253-1176 / (035) 253-1177 / (035) 253-1178 / (035) 253-1179 / (035) 253-1180 / (035) 253-1181 / (035) 253-1182 / (035) 253-1183 / (035) 253-1184 / (035) 253-1185 / (035) 253-1186 / (035) 253-1187 / (035) 253-1188 / (035) 253-1189 / (035) 253-1190 / (035) 253-1191 / (035) 253-1192 / (035) 253-1193 / (035) 253-1194 / (035) 253-1195 / (035) 253-1196 / (035) 253-1197 / (035) 253-1198 / (035) 253-1199 / (035) 253-1200

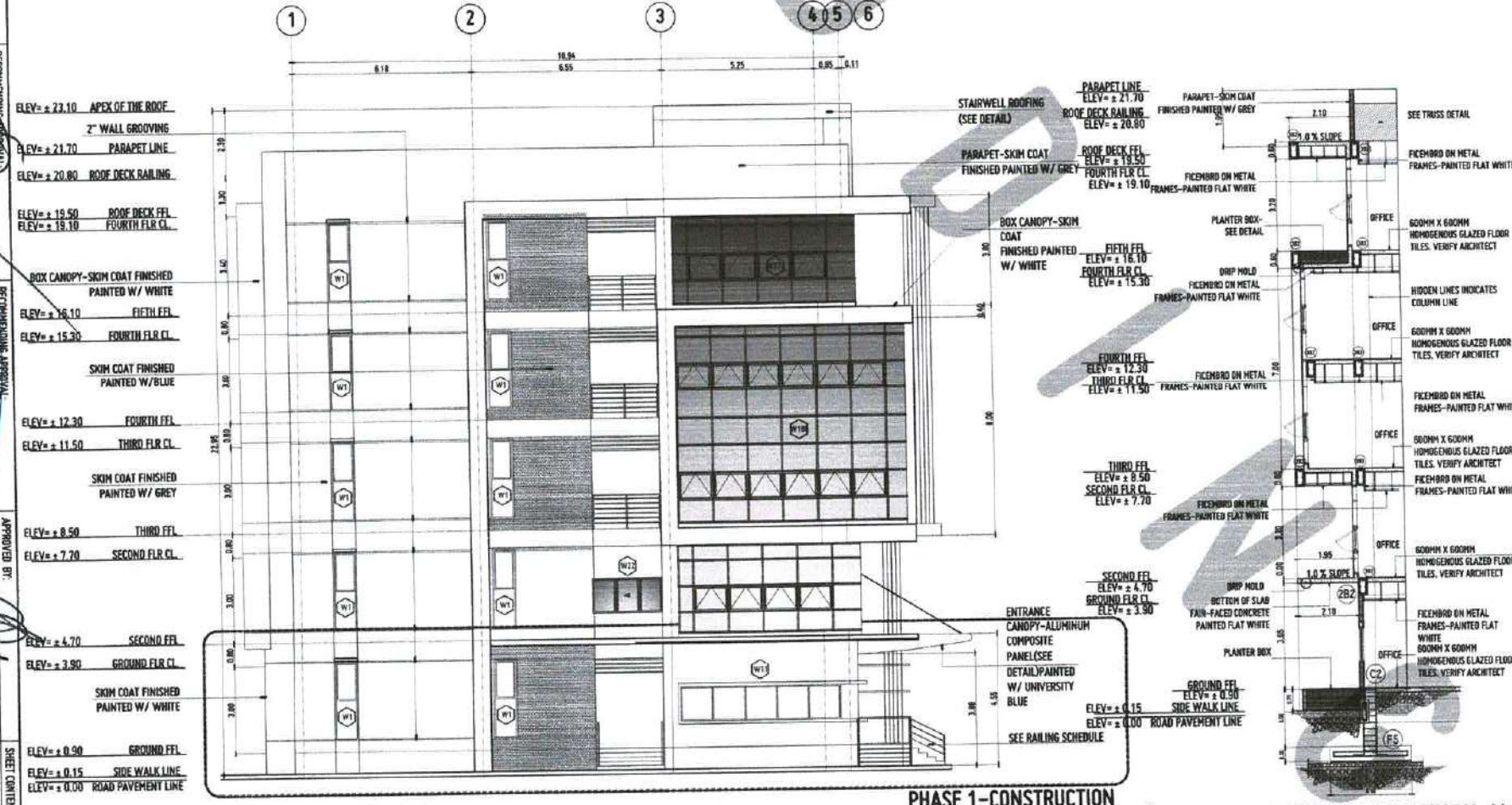
PROJECT: PROPOSED 21ST CENTURY 5 STOREY CLASSROOM BUILDING
 LOCATION: USTIP VALANGUNA CAMPUS, NEGROS ORIENTAL
 OWNER: UNIVERSITY OF SCIENCE AND TECHNOLOGY OF SOUTHERN PHILIPPINES

RECOMMENDING APPROVAL: AR. FERDINAND A. BORDA
 DIRECTOR, USTIP
 APPROVED BY: DR. AMERSON B. CULIURAL II
 PRESIDENT, USTIP SYSTEM

DATE: 08/15/2023
 SHEET NO: A6



FRONT ELEVATION
 SCALE: 1:100 MTS



LEFT SIDE ELEVATION
 SCALE: 1:100 MTS

BAY SECTION DETAIL THRU-X
 SCALE: 1:100 MTS

- REVISIONS:**
1. REVISION: PARAPET LINE, VENT GRILLE DETAIL
 2. REVISION: PARAPET-SKIM COAT FINISHED PAINTED W/ GREY
 3. REVISION: PARAPET-SKIM COAT FINISHED PAINTED W/ WHITE
 4. REVISION: PARAPET-SKIM COAT FINISHED PAINTED W/ GREY
 5. REVISION: PARAPET-SKIM COAT FINISHED PAINTED W/ WHITE
 6. REVISION: PARAPET-SKIM COAT FINISHED PAINTED W/ GREY
 7. REVISION: PARAPET-SKIM COAT FINISHED PAINTED W/ WHITE
 8. REVISION: PARAPET-SKIM COAT FINISHED PAINTED W/ GREY
 9. REVISION: PARAPET-SKIM COAT FINISHED PAINTED W/ WHITE
 10. REVISION: PARAPET-SKIM COAT FINISHED PAINTED W/ GREY
 11. REVISION: PARAPET-SKIM COAT FINISHED PAINTED W/ WHITE
 12. REVISION: PARAPET-SKIM COAT FINISHED PAINTED W/ GREY
 13. REVISION: PARAPET-SKIM COAT FINISHED PAINTED W/ WHITE
 14. REVISION: PARAPET-SKIM COAT FINISHED PAINTED W/ GREY
 15. REVISION: PARAPET-SKIM COAT FINISHED PAINTED W/ WHITE
 16. REVISION: PARAPET-SKIM COAT FINISHED PAINTED W/ GREY
 17. REVISION: PARAPET-SKIM COAT FINISHED PAINTED W/ WHITE
 18. REVISION: PARAPET-SKIM COAT FINISHED PAINTED W/ GREY
 19. REVISION: PARAPET-SKIM COAT FINISHED PAINTED W/ WHITE
 20. REVISION: PARAPET-SKIM COAT FINISHED PAINTED W/ GREY
- APPROVED BY:**
- OFFICE OF THE CHIEF ENGINEER
 INFRASTRUCTURE PLANNING AND FACILITY DEVELOPMENT UNIT
 UNIVERSITY OF SCIENCE AND TECHNOLOGY OF SOUTHERN PHILIPPINES



REPUBLIC OF THE PHILIPPINES
 UNIVERSITY OF SCIENCE AND TECHNOLOGY OF SOUTHERN PHILIPPINES
 OFFICE OF THE CHANCELLER
 INFRASTRUCTURE PLANNING AND FACILITY DEVELOPMENT UNIT
 CLAYTON ROAD, DAVAO DEL SUR, CAVITE, DAVAO REGION VIII
 TELEPHONE: (082) 71-41-41 / (082) 854-1734 / (082) 854-1735 / (082) 854-1736
 WEBSITE: www.ustip.edu.ph

PROJECT: PROPOSED 21ST CENTURY 5 STOREY CLASSROOM BUILDING
 LOCATION: USTIP VILLAGENA CAMPUS, MANSANG ORIENTAL, UNIVERSITY OF SCIENCE AND TECHNOLOGY OF SOUTHERN PHILIPPINES
 OWNER: UNIVERSITY OF SCIENCE AND TECHNOLOGY OF SOUTHERN PHILIPPINES
 ARCHITECT: FERNANDO A. DOMPILA
 PROJECT NO.: 1-13-2-8
 SHEET NO.: A7
 DATE: 08/27/2023

RECOMMENDING ARCHITECT: FERNANDO A. DOMPILA
 REGISTERED ARCHITECT NO. 10000
 APPROVED BY: DR. AMBROSIO B. COLTURA II
 PRESIDENT, USTIP SYSTEM

RECOMMENDING ARCHITECT: ATTY. EMWIN B. BUJIDO
 REGISTERED ARCHITECT NO. 10000
 APPROVED BY: DR. AMBROSIO B. COLTURA II
 PRESIDENT, USTIP SYSTEM

RECOMMENDING ARCHITECT: DR. AMBROSIO B. COLTURA II
 REGISTERED ARCHITECT NO. 10000
 APPROVED BY: DR. AMBROSIO B. COLTURA II
 PRESIDENT, USTIP SYSTEM

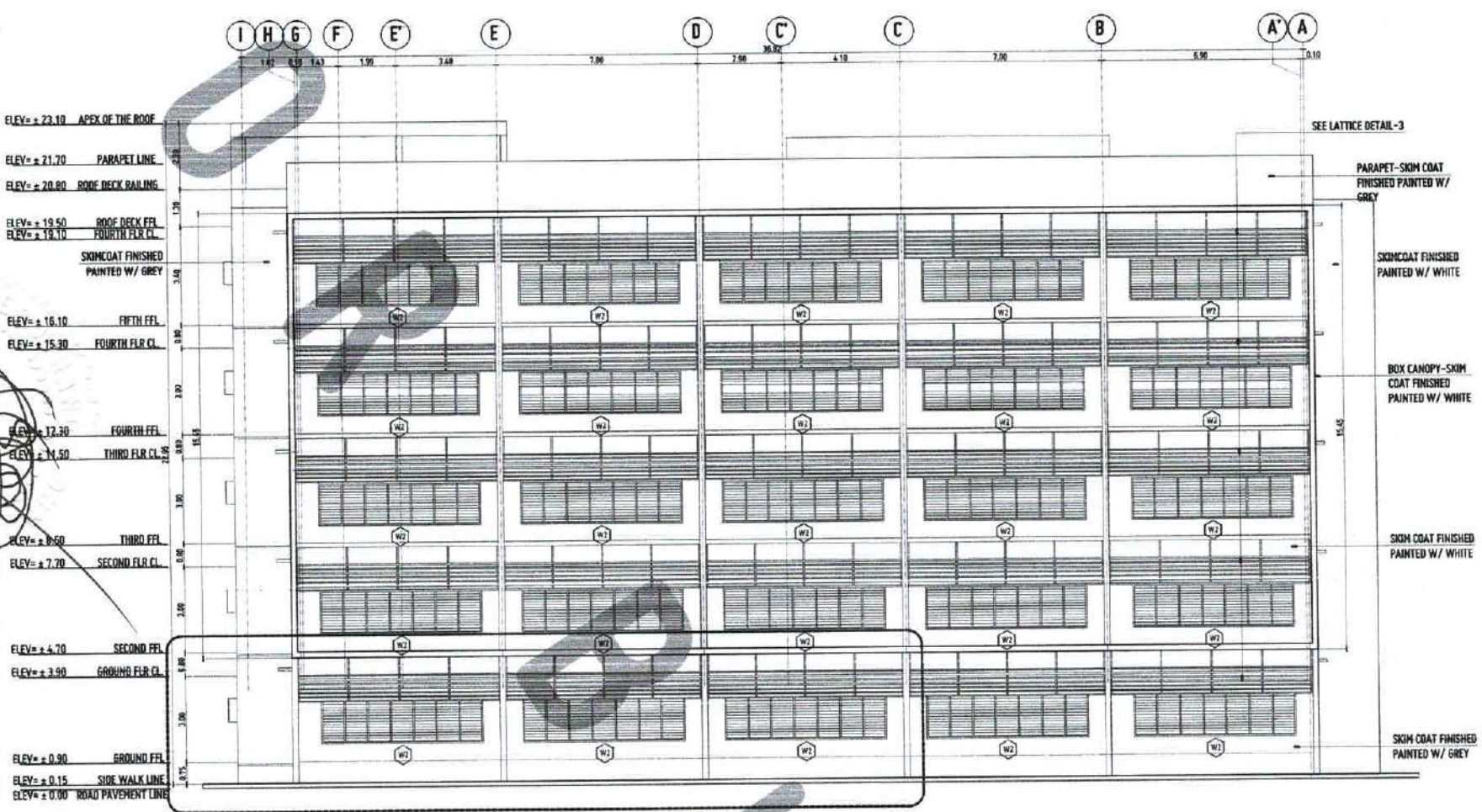
RECOMMENDING ARCHITECT: DR. AMBROSIO B. COLTURA II
 REGISTERED ARCHITECT NO. 10000
 APPROVED BY: DR. AMBROSIO B. COLTURA II
 PRESIDENT, USTIP SYSTEM

RECOMMENDING ARCHITECT: DR. AMBROSIO B. COLTURA II
 REGISTERED ARCHITECT NO. 10000
 APPROVED BY: DR. AMBROSIO B. COLTURA II
 PRESIDENT, USTIP SYSTEM

RECOMMENDING ARCHITECT: DR. AMBROSIO B. COLTURA II
 REGISTERED ARCHITECT NO. 10000
 APPROVED BY: DR. AMBROSIO B. COLTURA II
 PRESIDENT, USTIP SYSTEM

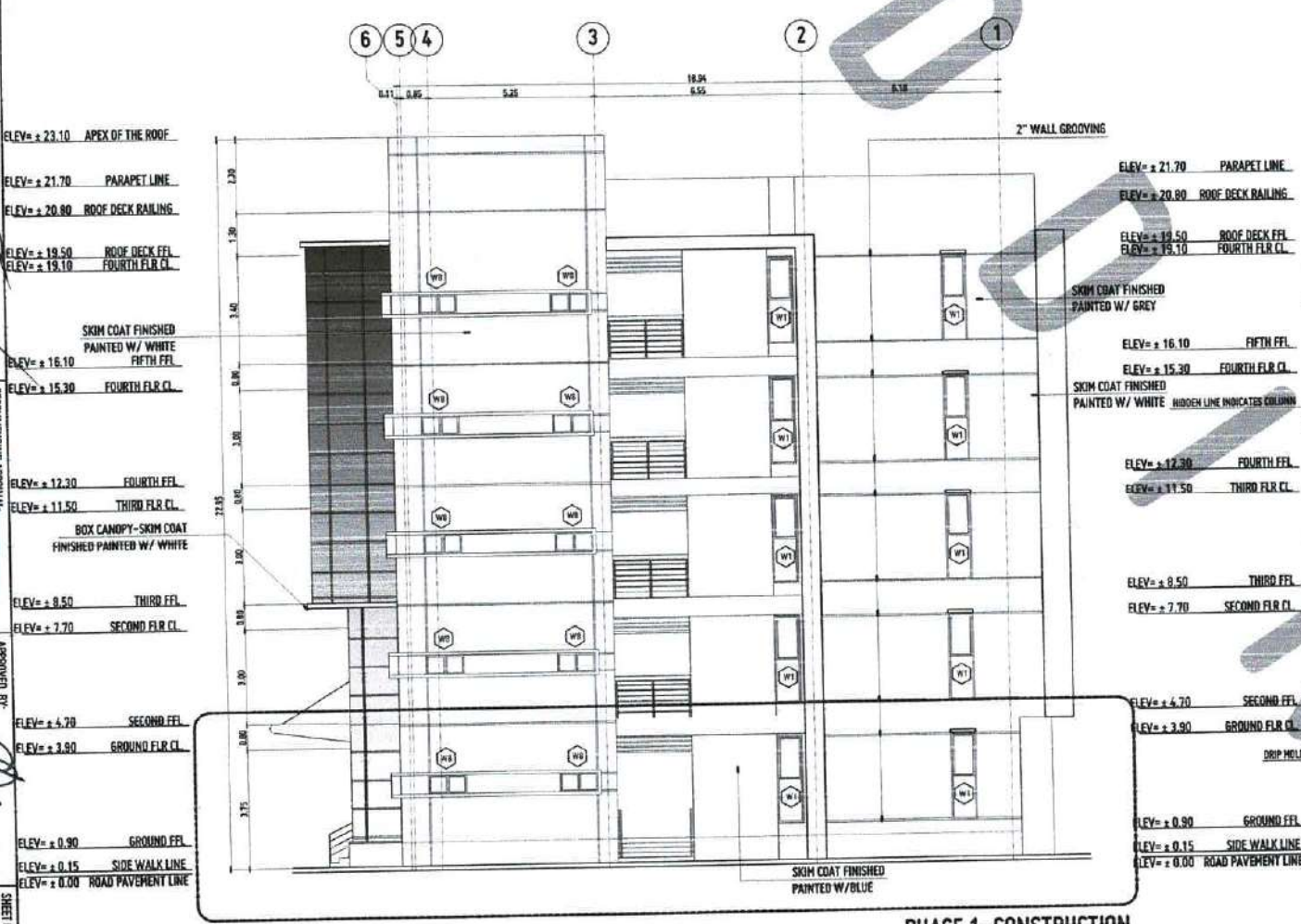
RECOMMENDING ARCHITECT: DR. AMBROSIO B. COLTURA II
 REGISTERED ARCHITECT NO. 10000
 APPROVED BY: DR. AMBROSIO B. COLTURA II
 PRESIDENT, USTIP SYSTEM

RECOMMENDING ARCHITECT: DR. AMBROSIO B. COLTURA II
 REGISTERED ARCHITECT NO. 10000
 APPROVED BY: DR. AMBROSIO B. COLTURA II
 PRESIDENT, USTIP SYSTEM

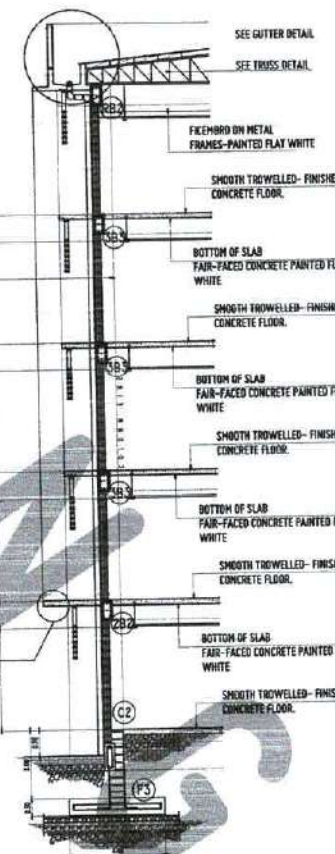


PHASE 1-CONSTRUCTION

REAR ELEVATION
 SCALE: 1:100 MTS



RIGHT SIDE ELEVATION
 SCALE: 1:100 MTS



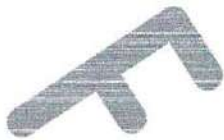
BAY SECTION DETAIL THRU-Y
 SCALE: 1:100 MTS

REPUBLIC OF THE PHILIPPINES
 OFFICE OF THE BUILDINGS OFFICIAL
 VILLAGENA, MANSANG ORIENTAL

APPROVED BY: [Signature]

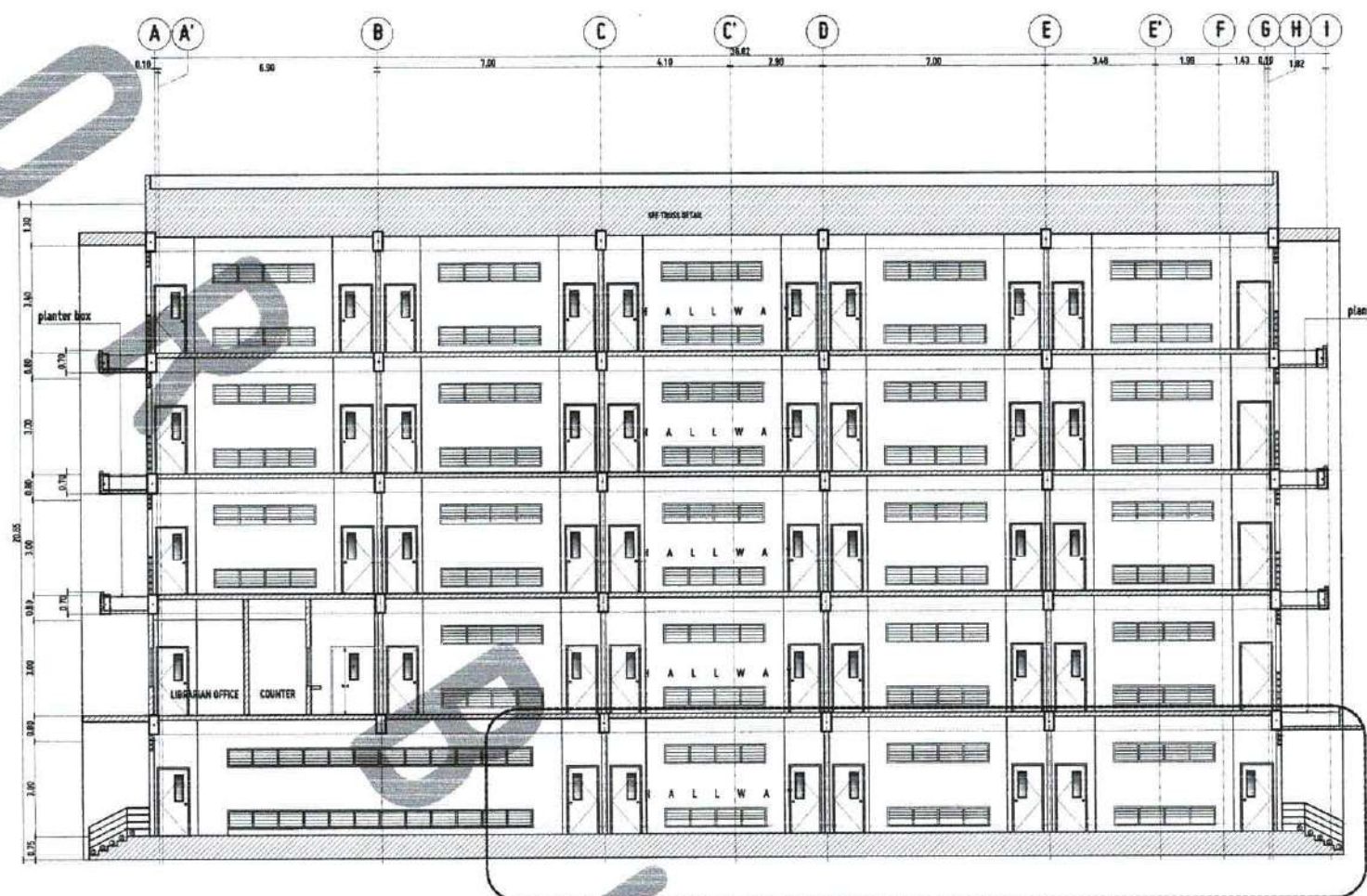
DATE: [Blank]

REMARKS: [Blank]



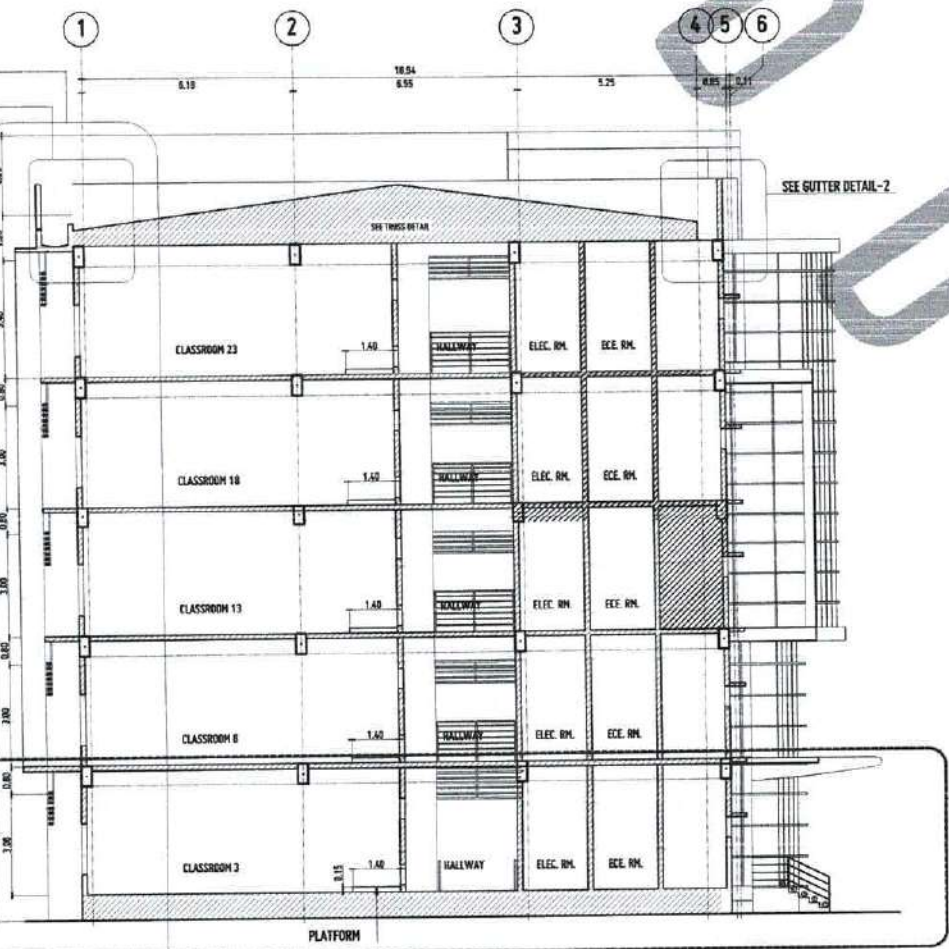
REPUBLIC OF THE PHILIPPINES
 UNIVERSITY OF SCIENCE AND TECHNOLOGY OF SOUTHERN PHILIPPINES
 INSTRUCTION: PLANNING AND FACILITY DEVELOPMENT UNIT
 CLASH: 6073 ANON, LAMPUN, CAVITE RING RD 070 000
 TEL: 042-71-60-45 / 042-71-60-128 / 042-71-60-129 / 042-71-60-130 / 042-71-60-131 / 042-71-60-132 / 042-71-60-133 / 042-71-60-134 / 042-71-60-135 / 042-71-60-136 / 042-71-60-137 / 042-71-60-138 / 042-71-60-139 / 042-71-60-140 / 042-71-60-141 / 042-71-60-142 / 042-71-60-143 / 042-71-60-144 / 042-71-60-145 / 042-71-60-146 / 042-71-60-147 / 042-71-60-148 / 042-71-60-149 / 042-71-60-150 / 042-71-60-151 / 042-71-60-152 / 042-71-60-153 / 042-71-60-154 / 042-71-60-155 / 042-71-60-156 / 042-71-60-157 / 042-71-60-158 / 042-71-60-159 / 042-71-60-160 / 042-71-60-161 / 042-71-60-162 / 042-71-60-163 / 042-71-60-164 / 042-71-60-165 / 042-71-60-166 / 042-71-60-167 / 042-71-60-168 / 042-71-60-169 / 042-71-60-170 / 042-71-60-171 / 042-71-60-172 / 042-71-60-173 / 042-71-60-174 / 042-71-60-175 / 042-71-60-176 / 042-71-60-177 / 042-71-60-178 / 042-71-60-179 / 042-71-60-180 / 042-71-60-181 / 042-71-60-182 / 042-71-60-183 / 042-71-60-184 / 042-71-60-185 / 042-71-60-186 / 042-71-60-187 / 042-71-60-188 / 042-71-60-189 / 042-71-60-190 / 042-71-60-191 / 042-71-60-192 / 042-71-60-193 / 042-71-60-194 / 042-71-60-195 / 042-71-60-196 / 042-71-60-197 / 042-71-60-198 / 042-71-60-199 / 042-71-60-200

ELEV. ± 23.10 APX OF THE ROOF
 ELEV. ± 21.70 PARAPET LINE
 ELEV. ± 20.80 ROOF DECK RAILING
 ELEV. ± 19.50 ROOF DECK FFL
 ELEV. ± 19.10 FOURTH FLR CL.
 ELEV. ± 16.10 FIFTH FFL
 ELEV. ± 15.30 FOURTH FLR CL.
 ELEV. ± 12.30 FOURTH FFL
 ELEV. ± 11.50 THIRD FLR CL.
 ELEV. ± 8.50 THIRD FFL
 ELEV. ± 7.70 SECOND FLR CL.
 ELEV. ± 4.70 SECOND FFL
 ELEV. ± 3.90 GROUND FLR CL.
 ELEV. ± 0.90 GROUND FFL
 ELEV. ± 0.15 SIDE WALK LINE
 ELEV. ± 0.00 ROAD PAVEMENT LINE

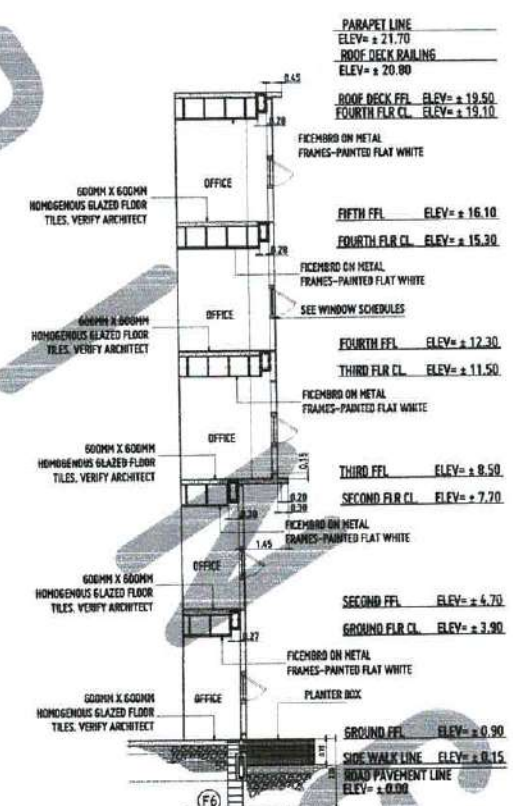


SECTION THRU-A
 SCALE: 1:100 MTS
 PHASE 1-CONSTRUCTION

ELEV. ± 23.10 APX OF THE ROOF
 ELEV. ± 21.70 PARAPET LINE
 ELEV. ± 20.80 ROOF DECK RAILING
 ELEV. ± 19.50 ROOF DECK FFL
 ELEV. ± 19.10 FOURTH FLR CL.
 ELEV. ± 16.10 FIFTH FFL
 ELEV. ± 15.30 FOURTH FLR CL.
 ELEV. ± 12.30 FOURTH FFL
 ELEV. ± 11.50 THIRD FLR CL.
 ELEV. ± 8.50 THIRD FFL
 ELEV. ± 7.70 SECOND FLR CL.
 ELEV. ± 4.70 SECOND FFL
 ELEV. ± 3.90 GROUND FLR CL.
 ELEV. ± 0.90 GROUND FFL
 ELEV. ± 0.15 SIDE WALK LINE
 ELEV. ± 0.00 ROAD PAVEMENT LINE



SECTION THRU-B
 SCALE: 1:100 MTS
 PHASE 1-CONSTRUCTION



BAY SECTION DETAIL THRU-Z
 SCALE: 1:100 MTS

RECOMMENDING APPROVAL:
 AR. FERDINAND S. BURERA
 DR. CAROL ANN M. MORALES
 DR. ANTONIO B. CULTURA II

DATE DRAWN:
 SHEET CONTENTS:
 SECTION THRU-A
 SECTION THRU-B

REPUBLIC OF THE PHILIPPINES
 OFFICE OF THE BUILDING OFFICIAL
 VILAMORON, NICARAGUA ORIENTAL

A8

