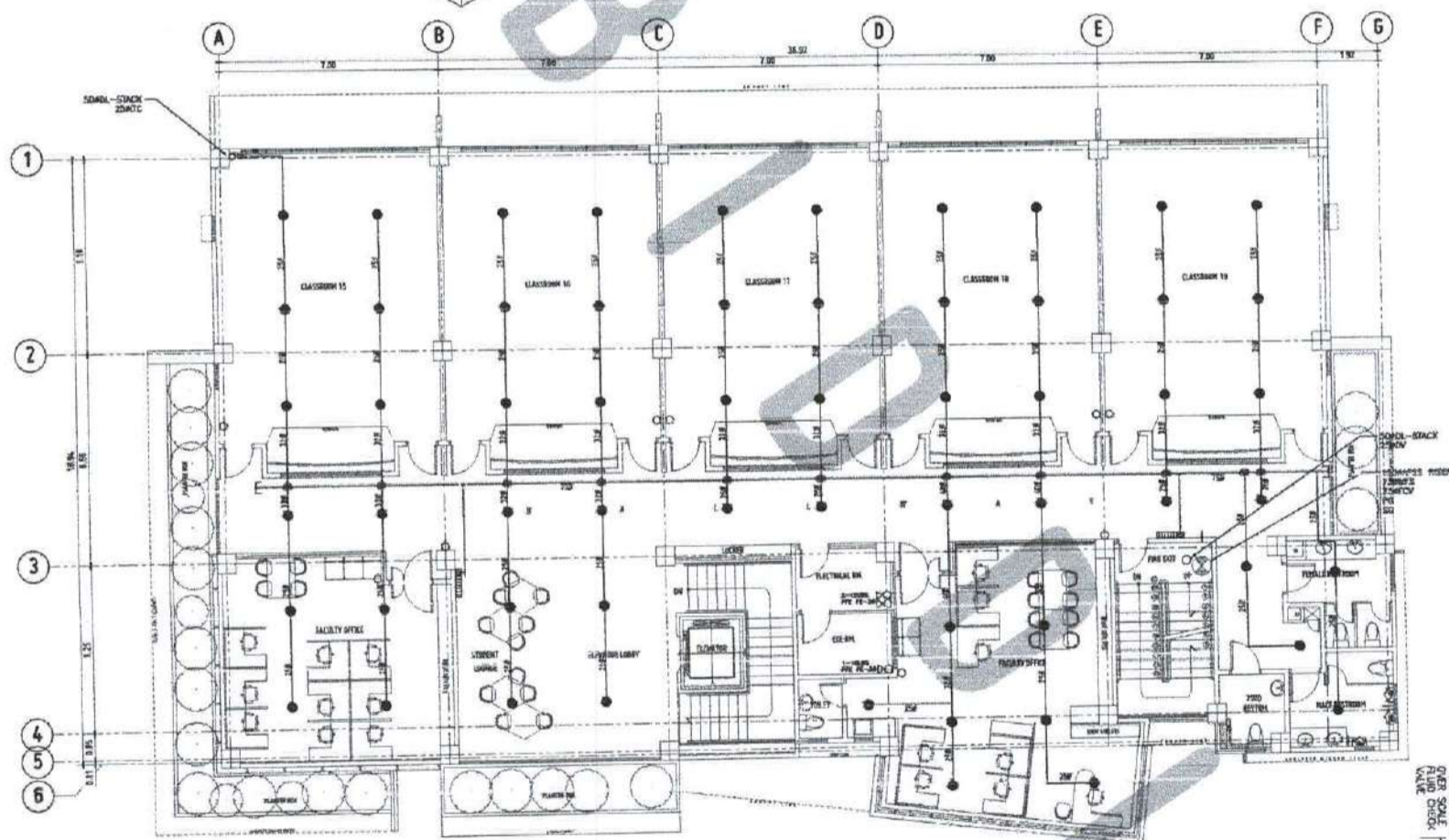
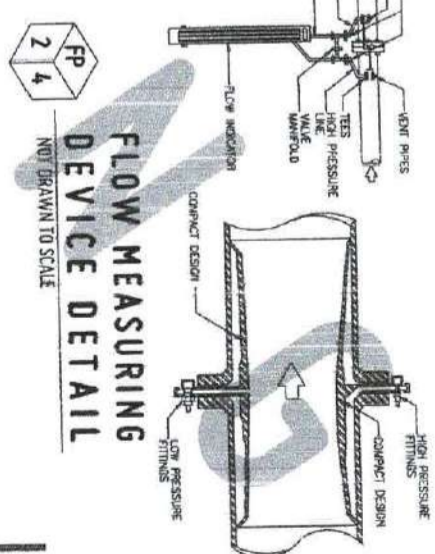


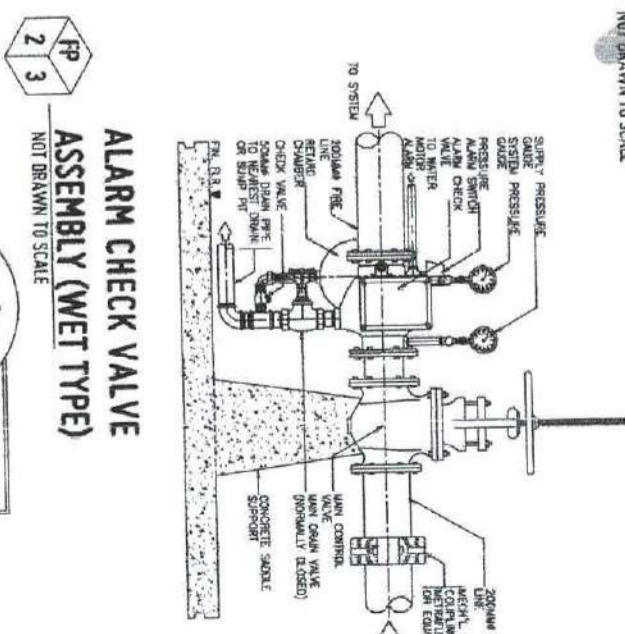
FIRE PROTECTION LAYOUT
 TYPICAL FLOOR - THIRD & FOURTH FLOOR
 SCALE: 1:100 MTS



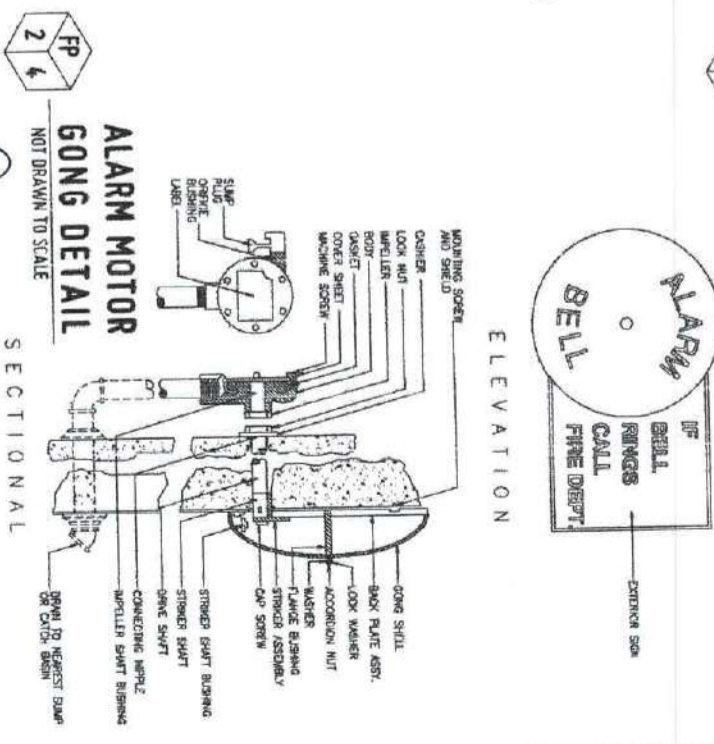
FIRE PROTECTION LAYOUT FIFTH FLOOR
 SCALE: 1:100 MTS



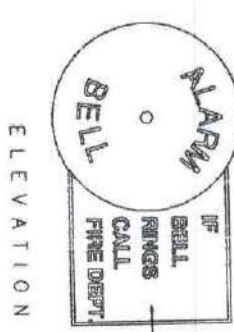
FLOW MEASURING DEVICE DETAIL
 NOT DRAWN TO SCALE



ALARM CHECK VALVE ASSEMBLY (WET TYPE)
 NOT DRAWN TO SCALE

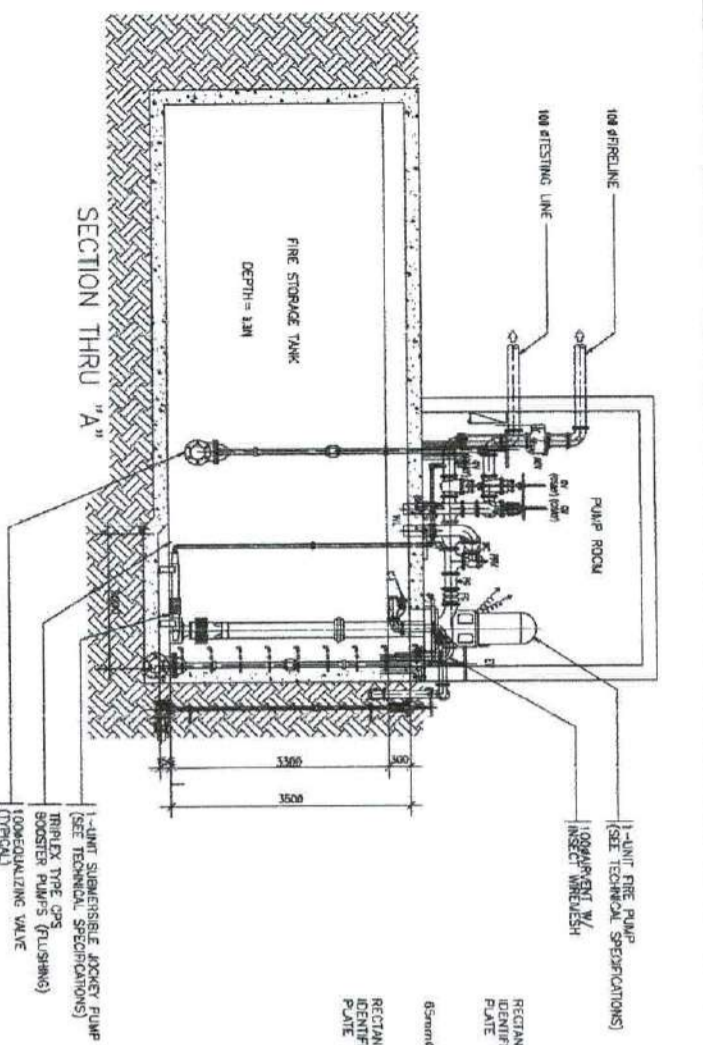


ALARM MOTOR GONG DETAIL
 NOT DRAWN TO SCALE

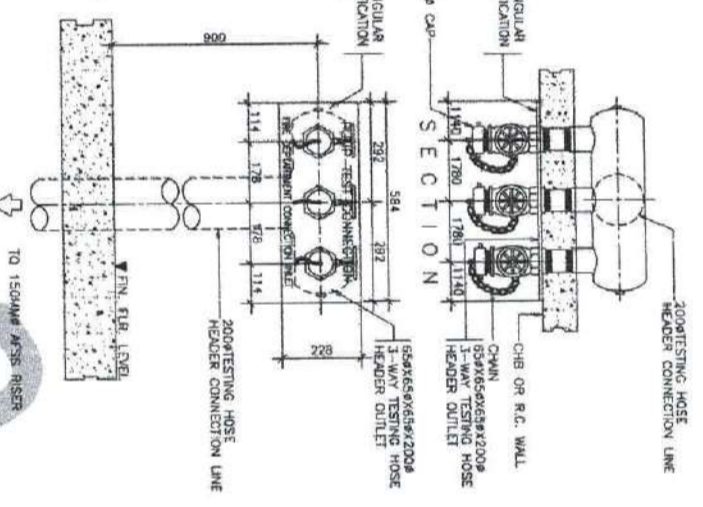


ELEVATION

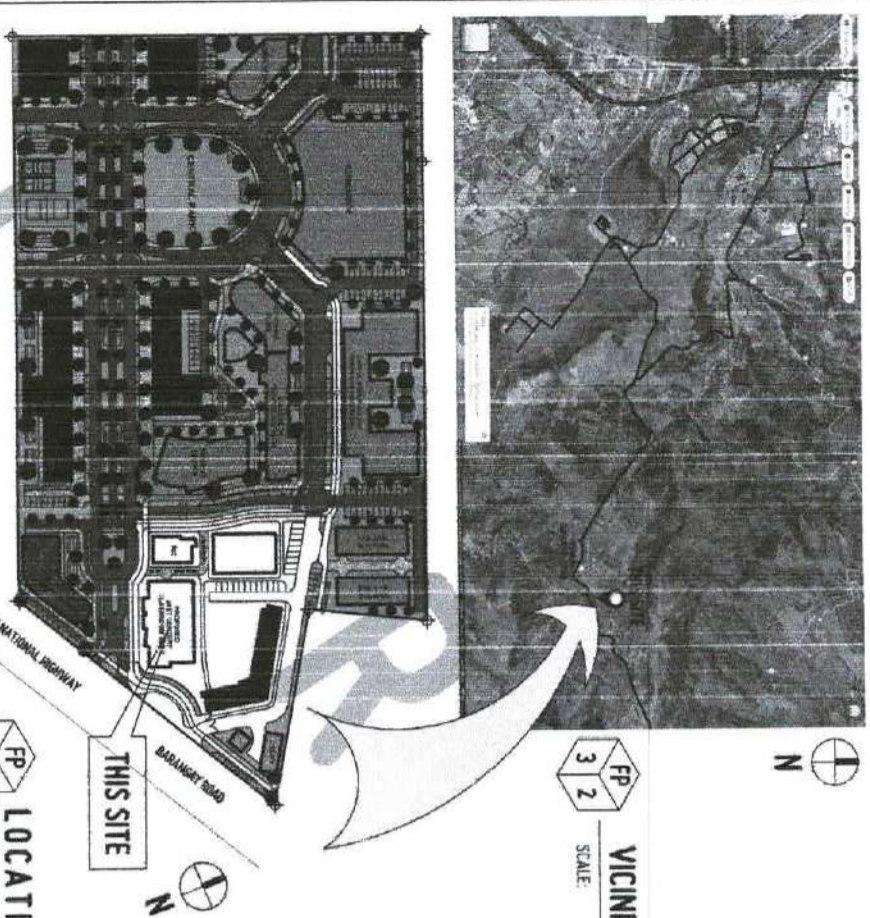
APPROVED BY:



FP 3 1
FIRE STORAGE TANK DETAIL
SCALE: 1:50 MTS

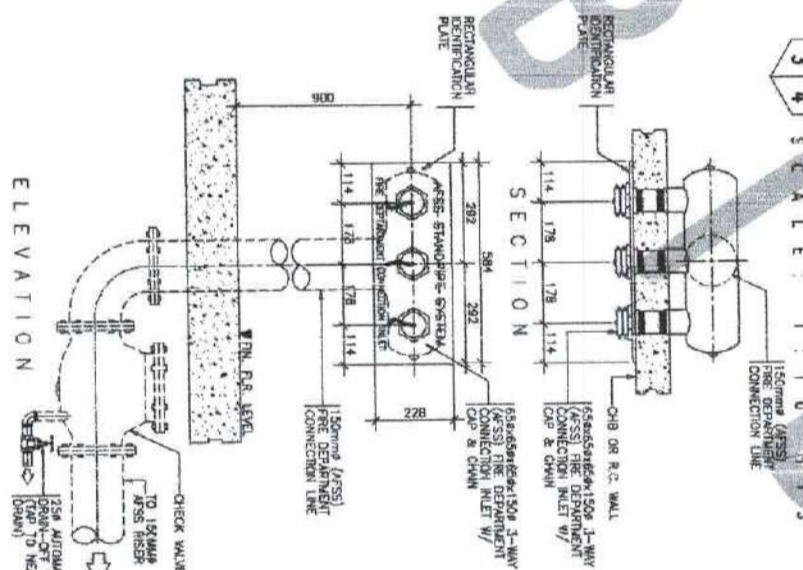


FP 3 4
PUMP TEST CONNECTION DETAIL
SCALE: 1:10 MTS

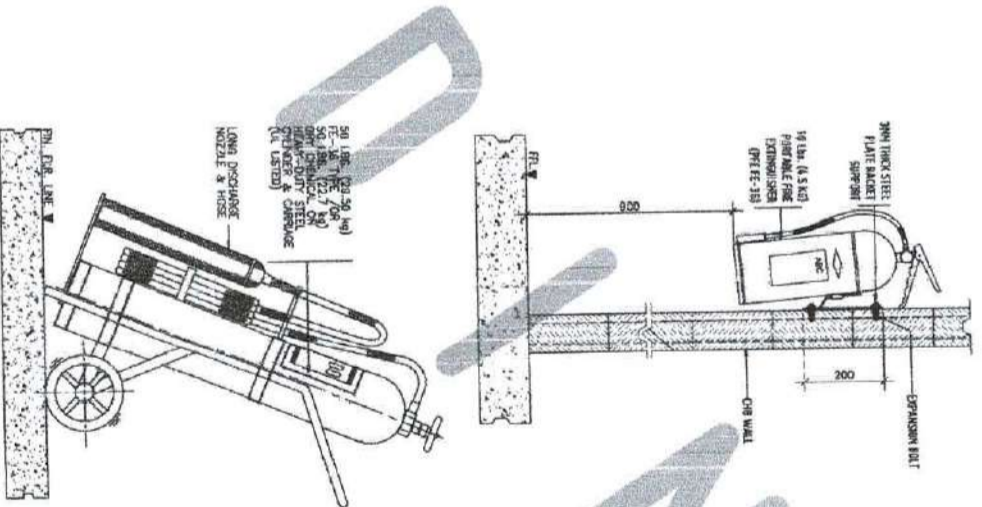


FP 3 2
VICINITY MAP
SCALE: 1:1500 MTS

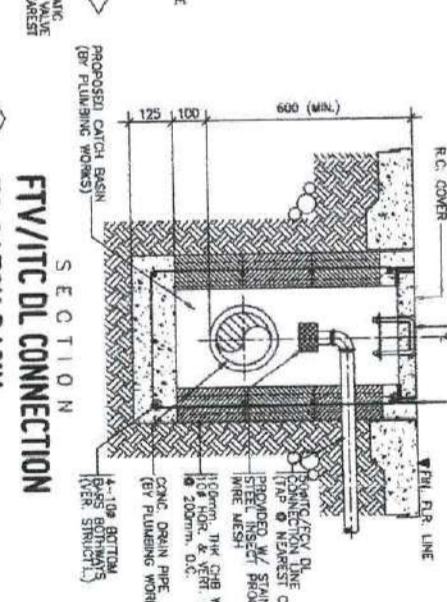
FP 3 3
LOCATION PLAN
SCALE: 1:1500 MTS



FP 3 5
AFSS FIRE DEPT. INLET DETAIL
SCALE: 1:10 MTS



FP 3 6
10 lbs. (4.5kgs) PFE FE-36 PORTABLE FIRE EXTINGUISHER
NOT DRAWN TO SCALE



FP 3 8
FIRE HOSE CABINET DETAIL
NOT DRAWN TO SCALE

FP 3 7
FTV/ITC DL CONNECTION TO CATCH BASIN
SCALE: 1:10 MTS

FP 3 6
PORTABLE FIRE EXTINGUISHER
NOT DRAWN TO SCALE

FP 3 5
AFSS FIRE DEPT. INLET DETAIL
SCALE: 1:10 MTS

FP 3 3
LOCATION PLAN
SCALE: 1:1500 MTS

FP 3 2
VICINITY MAP
SCALE: 1:1500 MTS

FP 3 1
FIRE STORAGE TANK DETAIL
SCALE: 1:50 MTS



REPUBLIC OF THE PHILIPPINES
UNIVERSITY OF SCIENCE AND TECHNOLOGY OF SOUTHERN PHILIPPINES
CLAYMAN DE OSA CAMPUS
INFRASTRUCTURE PLANNING AND FACILITY DEVELOPMENT UNIT
CLAYMAN DE OSA CAMPUS, CALAPAN CITY
TEL: (083) 854-4000
FAX: (083) 854-4001
WWW.USTIP.UTS.PH

| | | |
|----------------------------------|----------|--|
| PROFESSIONAL MECHANICAL ENGINEER | PROJECT | PROPOSED 21ST CENTURY 5 STOREY CLASSROOM BUILDING |
| DATE | LOCATION | USTIP MILWAUKEE CAMPUS, MILWAUKEE, WISCONSIN |
| SCALE | OWNER | UNIVERSITY OF SCIENCE AND TECHNOLOGY OF SOUTHERN PHILIPPINES |

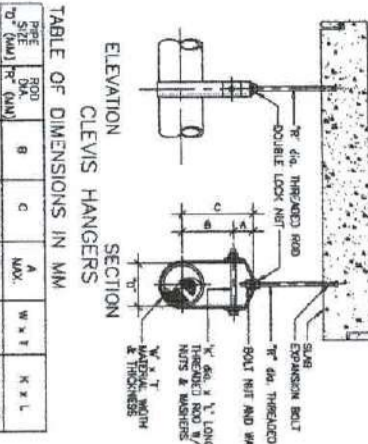
| | |
|----------------------------|----------------------|
| REGISTERED ARCHITECT | REGISTERED ARCHITECT |
| ART. BERNARDINO M. MORALES | ATTY. ERWIN D. SUCIO |
| DR. AMBROSIO A. CULTURA II | |

| | |
|--------------|--------------|
| APPROVED BY: | APPROVED BY: |
| | |

| | |
|-----------------|-----------------|
| SHEET CONTENTS: | DATE SUBMITTED: |
| | |

| |
|------------|
| FP3 |
|------------|

APPROVED BY:

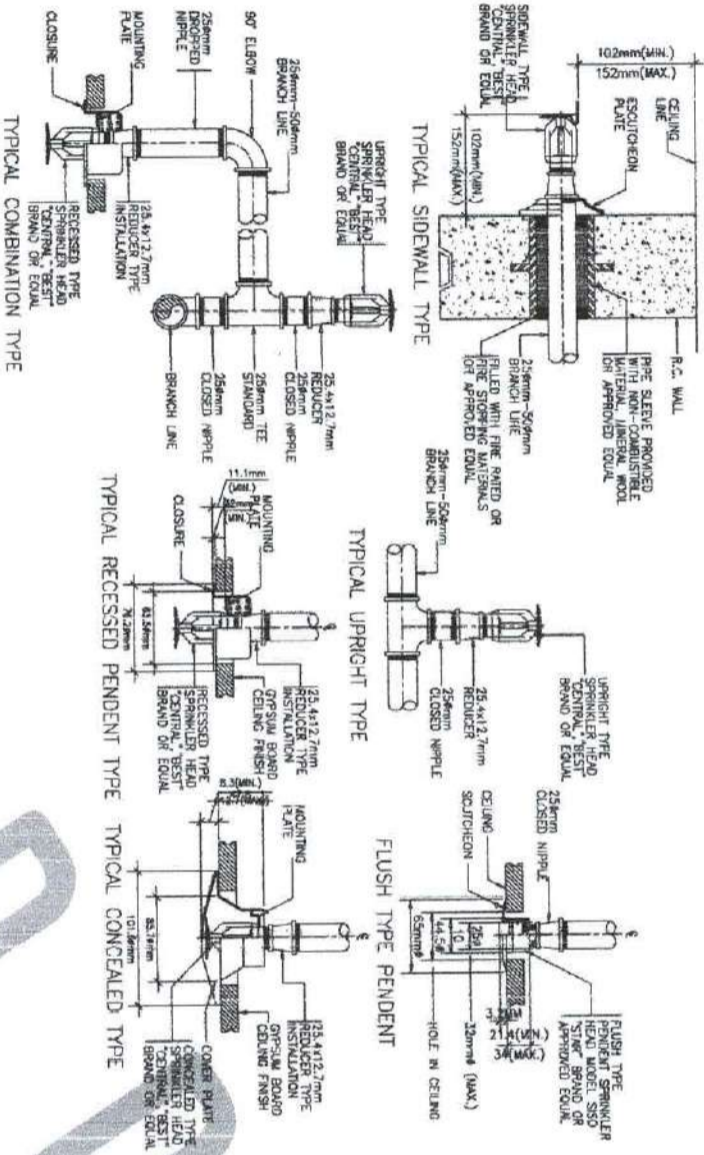


ELEVATION SECTION
CLEVIS HANGERS

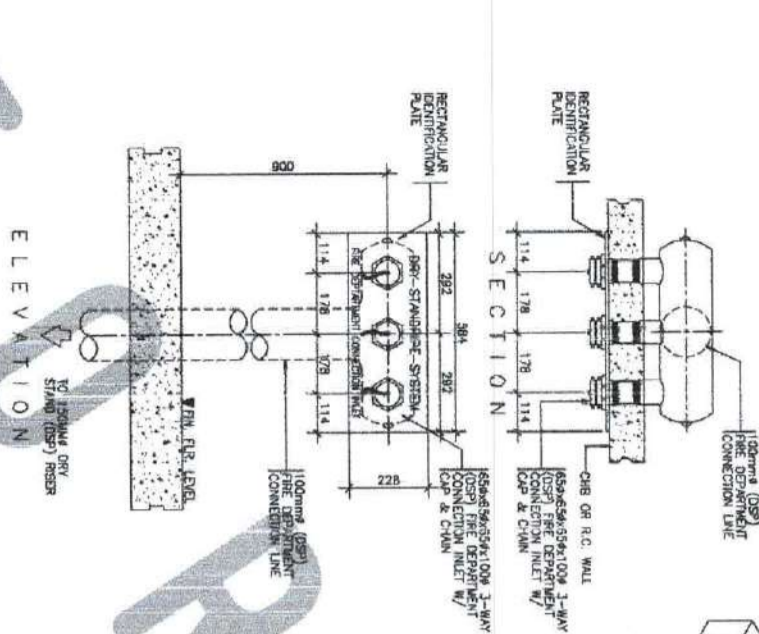
TABLE OF DIMENSIONS IN MM

| PIPE TO (MAX) (mm) | ROD DIA. (mm) | B | C | A | MAX. W x H | K x L |
|--------------------|---------------|--------|-------|-------|------------|-----------|
| 50 | 8.65 | 111.12 | 14.3 | 69.30 | 25 x 31 | M12 x 85 |
| 75 | 12.7 | 158.0 | 16.51 | 30.23 | 40 x 61 | M12 x 115 |
| 100 | 15.9 | 153.35 | 42 | 33.27 | 40 x 61 | M12 x 130 |
| 150 | 19.1 | 178.12 | 26.7 | 50.00 | 40 x 61 | M16 x 190 |

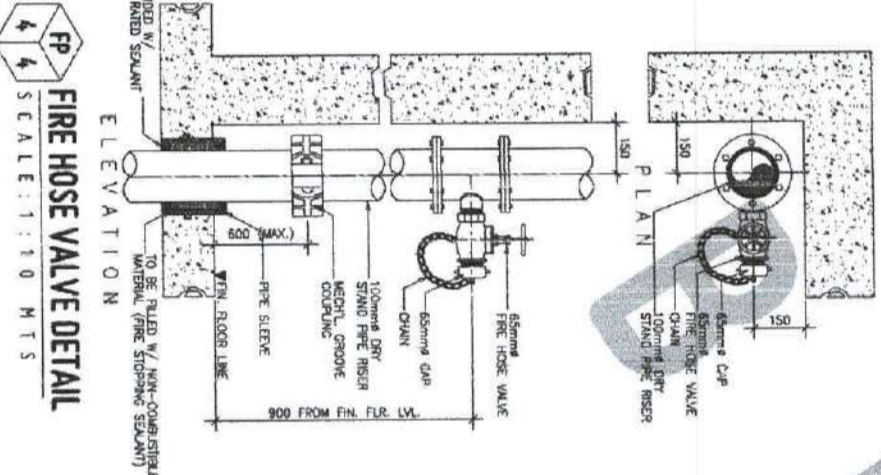
FP 4.1
PIPE HANGER DETAIL
NOT DRAWN TO SCALE



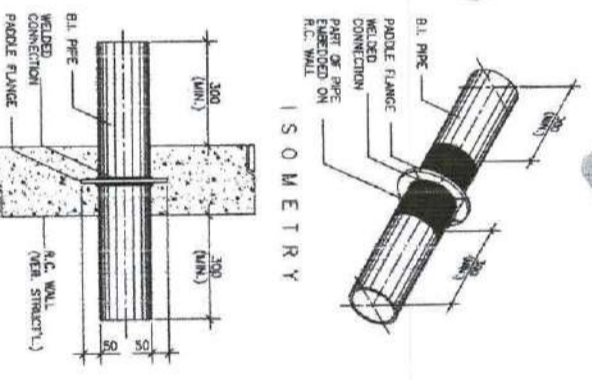
FP 4.2
SPRINKLER HEADS DETAIL
SCALE: 1:10 M.T.S



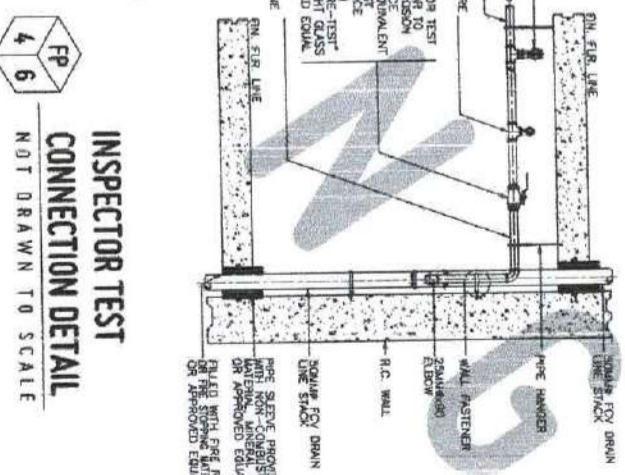
FP 4.3
DPSS FIRE DEPT. INLET DETAIL
SCALE: 1:10 M.T.S



FP 4.4
FIRE HOSE VALVE DETAIL
SCALE: 1:10 M.T.S



FP 4.5
PADLE FLANGE DETAIL
SCALE: 1:10 M.T.S



FP 4.6
INSPECTOR TEST CONNECTION DETAIL
NOT DRAWN TO SCALE

SCHEDULE OF PIPE SLEEVES

| SIZE OF BRANCH LINES | SIZE OF PIPE SLEEVES |
|----------------------|----------------------|
| 25MM | 50MM |
| 32MM | 50MM |
| 40MM | 65MM |
| 50MM | 75MM |
| 65MM | 100MM |
| 75MM | 100MM |
| 100MM | 150MM |
| 150MM | 225MM |
| 200MM | 300MM |

FP 4.7
PIPE SLEEVE DETAIL
NOT DRAWN TO SCALE

NOTES:

- STEELS SHALL BE PROVIDED AROUND ALL PIPING EXTENDING THROUGH WALLS, DOORS, PLATFORMS AND FOUNDATIONS. THE CLEARANCE BETWEEN THE PIPE SLEEVES SHALL BE INSULATED WITH NON-COMBUSTIBLE FIBERGLASS OR EQUIVALENT.
- BRINKMAN CLEARANCE BETWEEN PIPE AND SLEEVES SHALL NOT BE LESS THAN 25MM FOR PIPE 25MM AND LARGER. FLOOR SLEEVES SHALL BE EXTENDED AT LEAST 75MM ABOVE THE TOP OF THE WEARING SURFACE.



REPUBLIC OF THE PHILIPPINES
UNIVERSITY OF THE PHILIPPINES
OFFICE OF THE BUILDING OFFICIAL
MILWAUKEE PLAINS OFFICE

PROPOSED 21ST CENTURY 5 STOREY CLASSROOM BUILDING
UNIVERSITY OF THE PHILIPPINES
MILWAUKEE PLAINS OFFICE

RECOMMENDING APPROVAL:
ATY. ERWIN B. BORDO
DIRECTOR OF THE PHILIPPINE FIRE DEPARTMENT

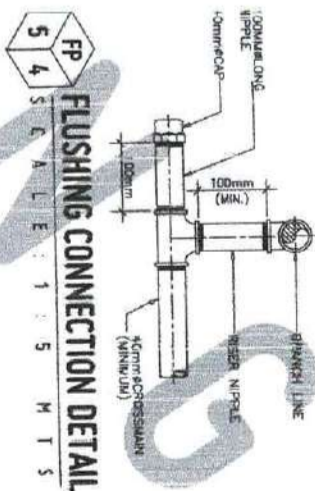
RECOMMENDING APPROVAL:
DR. AMBROSIO B. CULTURAL II
MILWAUKEE PLAINS OFFICE

APPROVED BY:
DR. AMBROSIO B. CULTURAL II
MILWAUKEE PLAINS OFFICE

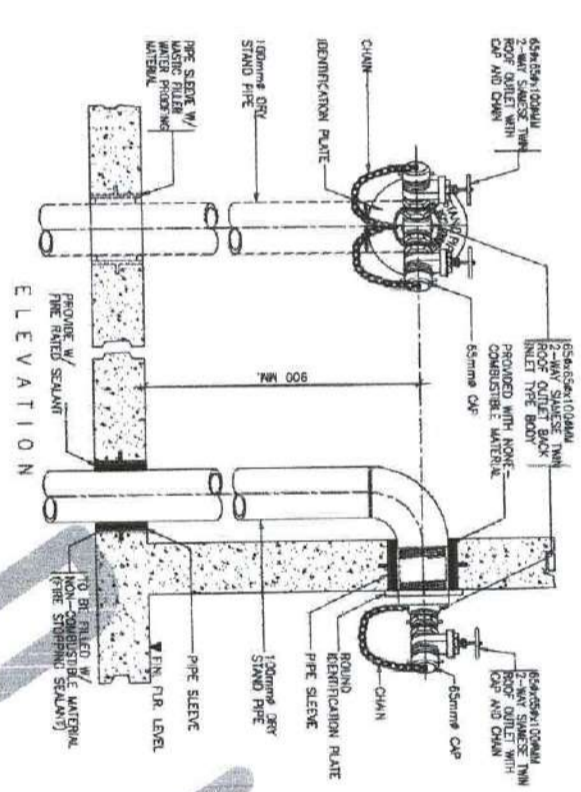
SHEET CONTENTS:
DATE: 10/10/2018
SCALE: 1:10 M.T.S



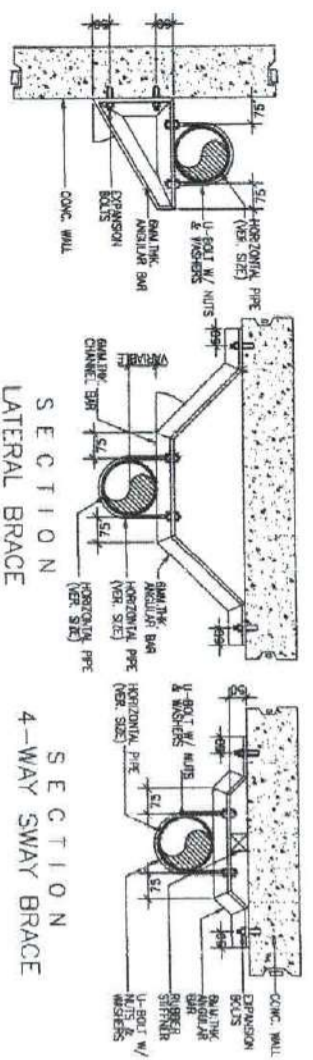
APPROVED BY:



FP 54
FLUSHING CONNECTION DETAIL
SCALE: 1:1.5 MTS



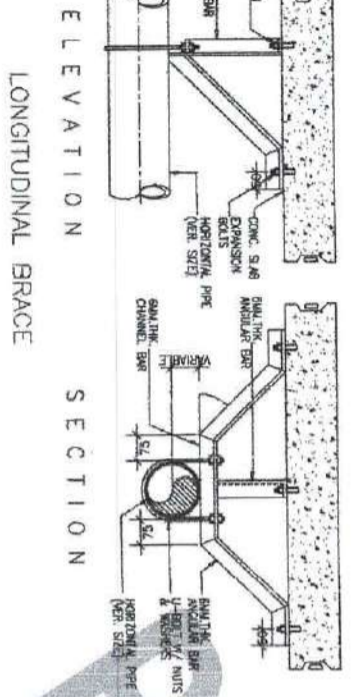
FP 52
SIAMESE TWIN ROOF OUTLET DETAIL
SCALE: 1:1.0 MTS



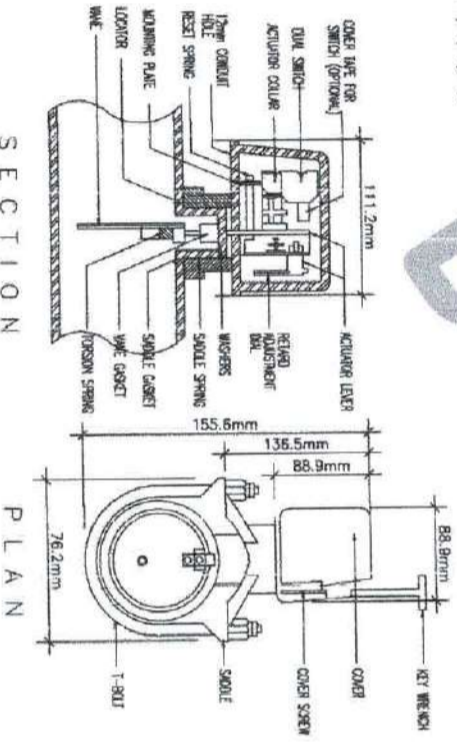
FP 51
PIPE BRACKET

SCHEDULE OF PIPE BRACKET/BRACING

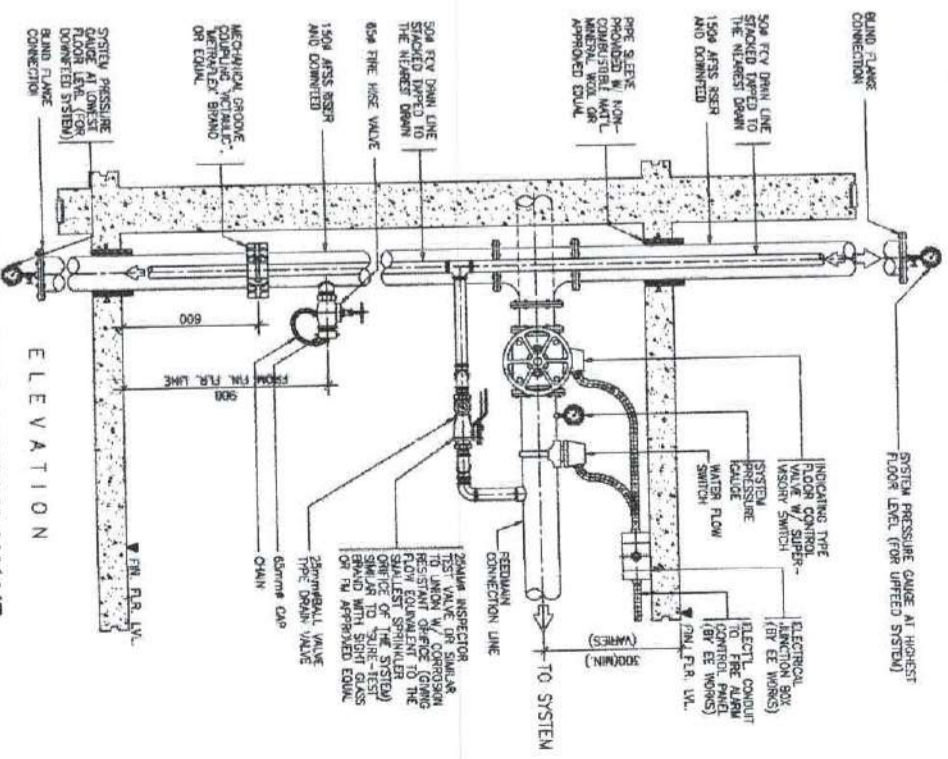
| PIPE SIZE | NO. OF ANCHORS | NO. OF BRACKETS |
|-----------|----------------|-----------------|
| 1/2" | 2 | 1 |
| 3/4" | 2 | 1 |
| 1" | 2 | 1 |
| 1 1/4" | 2 | 1 |
| 1 1/2" | 2 | 1 |
| 2" | 2 | 1 |
| 2 1/2" | 2 | 1 |
| 3" | 2 | 1 |
| 3 1/2" | 2 | 1 |
| 4" | 2 | 1 |
| 4 1/2" | 2 | 1 |
| 5" | 2 | 1 |
| 6" | 2 | 1 |
| 8" | 2 | 1 |
| 10" | 2 | 1 |
| 12" | 2 | 1 |



FP 53
LONGITUDINAL BRACE
SCALE: 1:1.0 MTS



FP 53
WATER FLOW SWITCH DETAIL
SCALE: 1:1.0 MTS



FP 55
SUPERVISORY FLOOR CONTROL VALVE ASSEMBLY & VALVE HOSE DETAIL
SCALE: 1:1.0 MTS

FOR BIDS



REPUBLIC OF THE PHILIPPINES
UNIVERSITY OF SCIENCE AND TECHNOLOGY OF SOUTHERN PHILIPPINES
CLAYTON A. BASTIA
DEPARTMENT OF CIVIL ENGINEERING
CAMPUS
INTEGRATIVE PLANNING AND FACILITY DEVELOPMENT UNIT
CLAYTON A. BASTIA
DEPARTMENT OF CIVIL ENGINEERING
CLAYTON A. BASTIA
DEPARTMENT OF CIVIL ENGINEERING
CLAYTON A. BASTIA
DEPARTMENT OF CIVIL ENGINEERING

PROFESSIONAL MECHANICAL ENGINEER
PROJECT: PROPOSED 21ST CENTURY 5 STOREY CLASSROOM BUILDING
LOCATION: USTP WILAMORADA CAMPUS, MINDANAO ORIENTAL
OWNER: UNIVERSITY OF SCIENCE AND TECHNOLOGY OF SOUTHERN PHILIPPINES

RECOMMENDING APPROVAL: **DR. FERDINAND R. GONZALES**, DIRECTOR (PEP)
RECOMMENDING APPROVAL: **ATTY. EDWIN B. BORDADO**, UIC-UP REPRESENTATIVE & LEGAL ATTORNEY
APPROVED BY: **DR. AMBROSIO B. CULTURA II**, PRESIDENT, USTP SYSTEM

SHEET CONTROLS: THIS SHEET IS PART OF THE PROJECT AND SHOULD NOT BE REPRODUCED OR COPIED WITHOUT THE WRITTEN PERMISSION OF THE ARCHITECT.

DATE: _____
SCALE: _____

PROJECT: PROPOSED 21ST CENTURY 5 STOREY CLASSROOM BUILDING
LOCATION: USTP WILAMORADA CAMPUS, MINDANAO ORIENTAL
OWNER: UNIVERSITY OF SCIENCE AND TECHNOLOGY OF SOUTHERN PHILIPPINES

RECOMMENDING APPROVAL: **DR. FERDINAND R. GONZALES**, DIRECTOR (PEP)
RECOMMENDING APPROVAL: **ATTY. EDWIN B. BORDADO**, UIC-UP REPRESENTATIVE & LEGAL ATTORNEY
APPROVED BY: **DR. AMBROSIO B. CULTURA II**, PRESIDENT, USTP SYSTEM

FP5