

REPUBLIC OF THE PHILIPPINES  
OFFICE OF THE ARCHITECTURAL  
COUNCIL OF MANILA CITY

APPROVED BY:

FLOOR FINISHES

MARK	DESCRIPTION
(F-1)	SMOOTH POLISHED FLOOR FINISH WITH BLENDED
(F-2)	ANTISTATIC POLISHED FLOOR FINISH WITH BLENDED
(F-3)	ANTI-STATIC POLISHED FLOOR FINISH WITH BLENDED

WALL FINISHES

MARK	DESCRIPTION
(W-1)	INTERNAL STONE CLADDING, CONCRETE AND
(W-2)	INTERNAL STONE CLADDING, CONCRETE AND
(W-3)	INTERNAL STONE CLADDING, CONCRETE AND
(W-4)	INTERNAL STONE CLADDING, CONCRETE AND
(W-5)	INTERNAL STONE CLADDING, CONCRETE AND

PARTITION

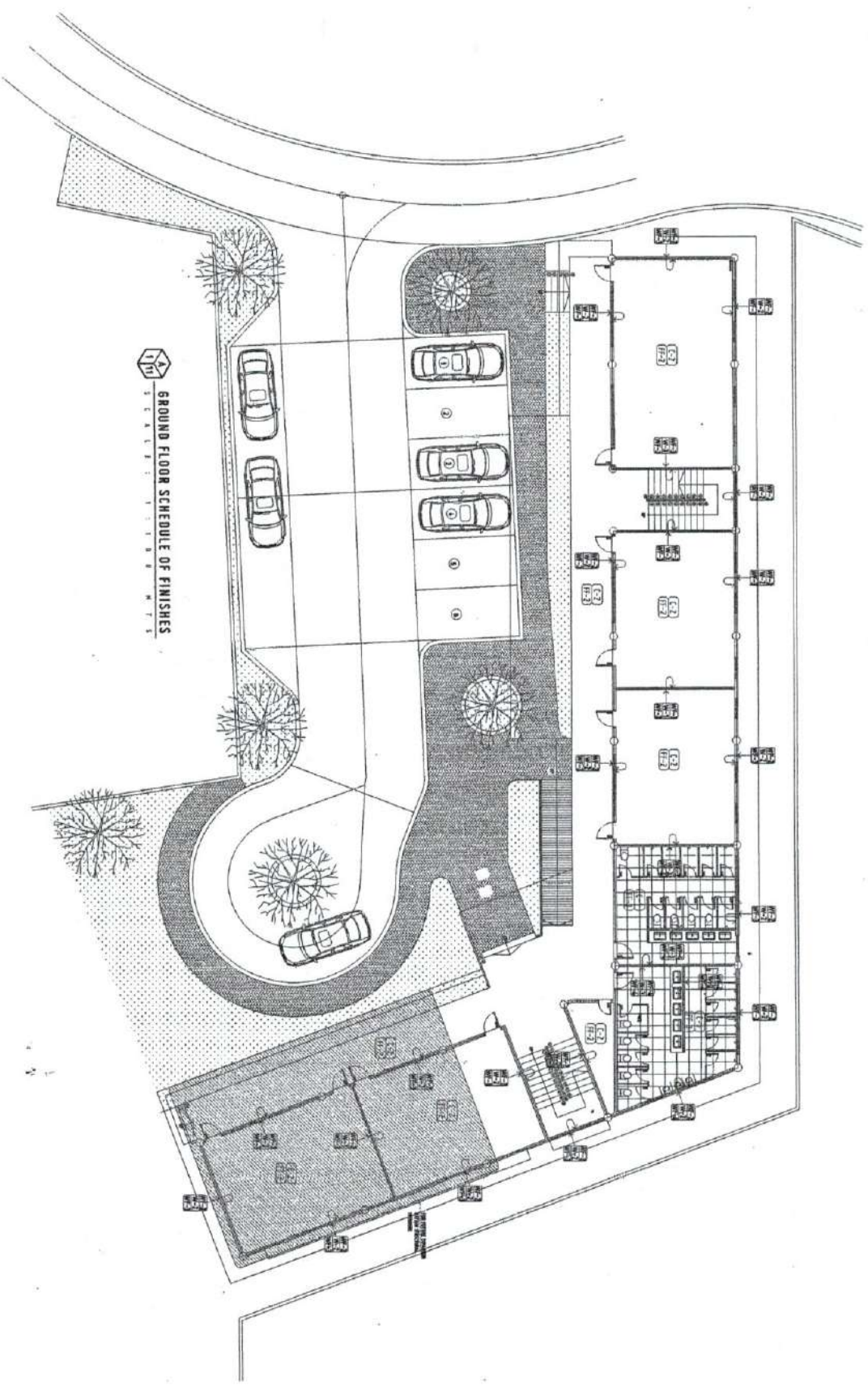
MARK	DESCRIPTION
(P-1)	100MM THICK, LIGHT GREEN PAINTED
(P-2)	100MM THICK, LIGHT GREEN PAINTED
(P-3)	100MM THICK, LIGHT GREEN PAINTED
(P-4)	100MM THICK, LIGHT GREEN PAINTED

CEILING FINISHES

MARK	DESCRIPTION
(C-1)	CONCRETE CEILING, LIGHT PAINT
(C-2)	CONCRETE CEILING, LIGHT PAINT
(C-3)	CONCRETE CEILING, LIGHT PAINT

DRAWING SYMBOLS

MARK	DESCRIPTION
(S-1)	CEILING FINISHES
(S-2)	FLOOR FINISHES
(S-3)	WALL FINISHES
(S-4)	WALL FINISHES
(S-5)	WALL FINISHES



GROUND FLOOR SCHEDULE OF FINISHES



REPUBLIC OF THE PHILIPPINES  
UNIVERSITY OF SCIENCE AND TECHNOLOGY OF SOUTHERN PHILIPPINES  
INTEGRATING EDUCATION AND FACILITY DEVELOPMENT UNIT  
CAMPUS MANAGEMENT, LAMPASA, CAGAYAN DE ORO CITY  
CITY OFFICE: 8000-8000-8000 (8000-8000-8000)  
CITY OFFICE: 8000-8000-8000 (8000-8000-8000)

PROJECT: AR JEFFER JOHN L. TAMIA  
ARCHITECT OF RECORD: AR JEFFER JOHN L. TAMIA  
PROJECT NO.: 1111-1111-1111  
DATE: 11-11-11

COMPLETION OF SPORTS COMPLEX AND RESIDENCES PHASE 1C  
CAMPUS MANAGEMENT, LAMPASA, CAGAYAN DE ORO CITY  
UNIVERSITY OF SCIENCE AND TECHNOLOGY OF SOUTHERN PHILIPPINES

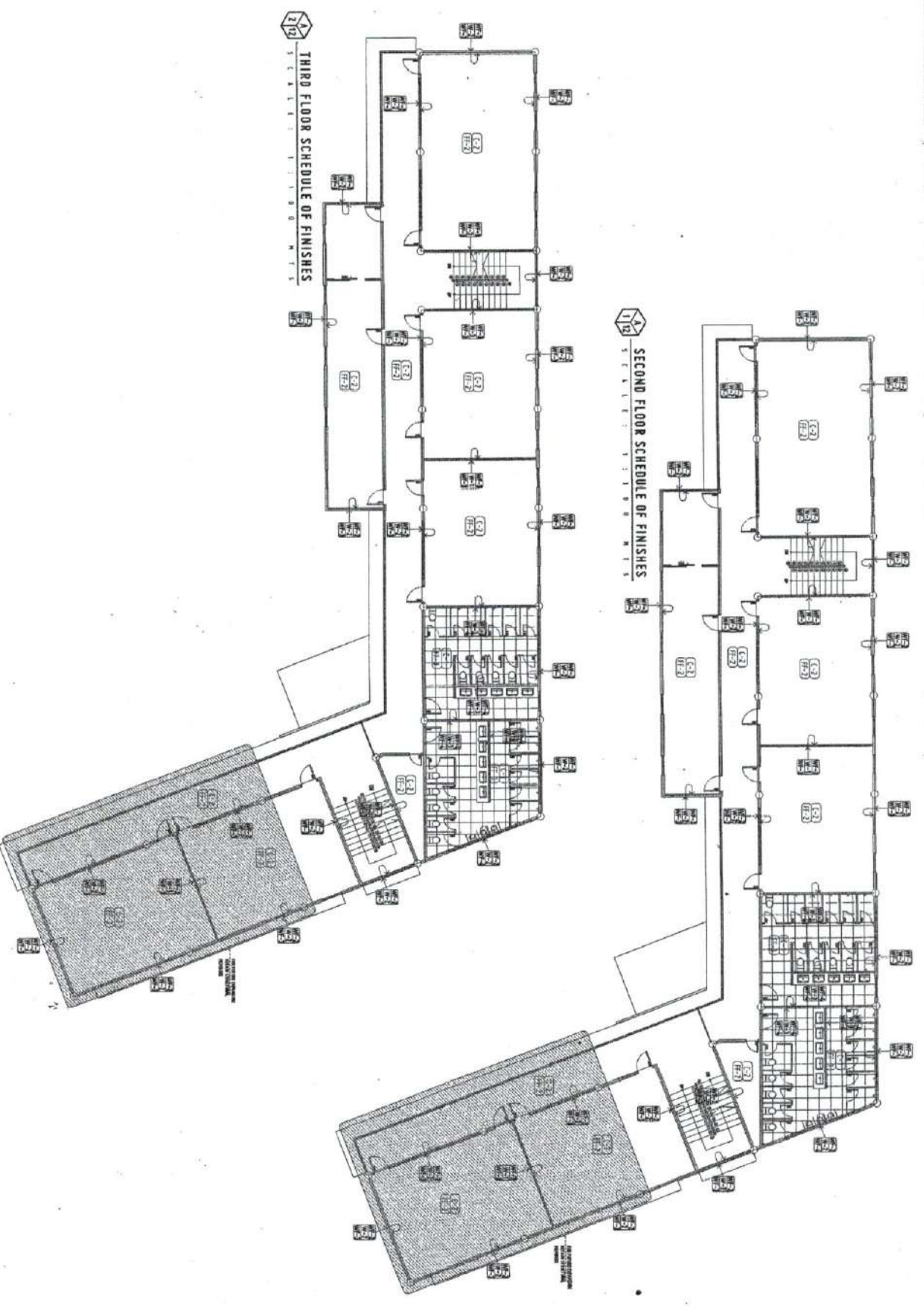
APPROVED BY: [Signature]  
ARCHITECT OF RECORD: AR JEFFER JOHN L. TAMIA

APPROVED BY: [Signature]  
ARCHITECT OF RECORD: AR JEFFER JOHN L. TAMIA

APPROVED BY: [Signature]  
ARCHITECT OF RECORD: AR JEFFER JOHN L. TAMIA

SHEET COMMENTS: [Blank]  
DATE: [Blank]  
NO: [Blank]  
A11

APPROVED BY:



SECOND FLOOR SCHEDULE OF FINISHES

THIRD FLOOR SCHEDULE OF FINISHES



UNIVERSITY OF THE PHILIPPINES  
SOUTHERN MINDANAO  
INTEGRATED TRAINING AND RESEARCH CENTER  
CLARK H. BEEBE AVENUE, LIPATA, CALAPAN BRANCH OFFICE  
TEL: (083) 822-1111 / (083) 822-1112 / (083) 822-1113 / (083) 822-1114  
WWW.USTIP.UMSOU.PH

PROJECT: AR. JEFFERSON L. TALIA  
ARCHITECT OF RECORD  
NO. 1 3 5 8 1 1 / 11111.1 1 1 1 1 1 1 1 1  
PROJECT ADDRESS: 11111.1 1 1 1 1 1 1 1 1  
OWNER: UNIVERSITY OF THE PHILIPPINES

COMPLETION OF SPORTS COMPLEX AND RESIDENCES (PHASE 1G)  
CLARK H. BEEBE AVENUE, LIPATA, CALAPAN BRANCH OFFICE  
UNIVERSITY OF THE PHILIPPINES SOUTHERN MINDANAO

INTERVENING APPROVAL:  
AR. JEFFERSON L. TALIA  
ARCHITECT OF RECORD

RECOMMENDING APPROVAL:  
ATTY. ERNAN B. BRIDO  
DC-17 (THE ADMINISTRATION & LEGAL AFFAIRS)

APPROVED BY:  
DR. AMBROSIO C. CALITUBA II  
PRESIDENT, BATT STATE

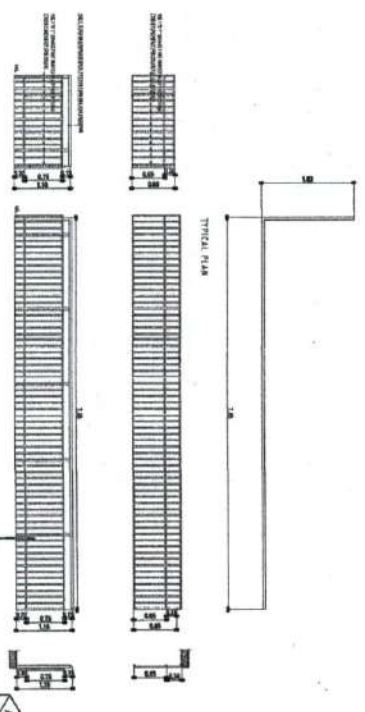
SHEET CONTENTS	DATE

A12

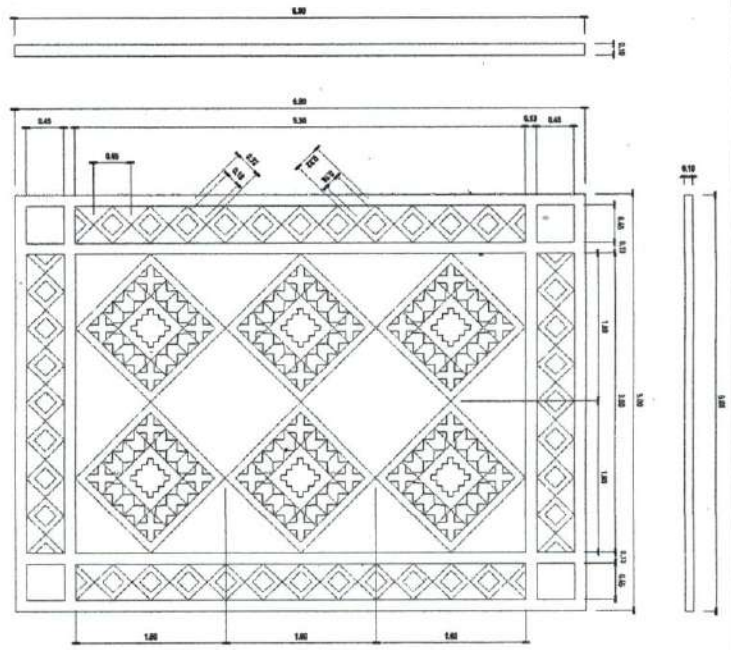
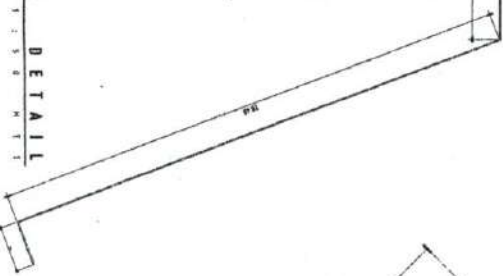
NO.	DESCRIPTION	UNIT	QUANTITY	REMARKS
01	WOOD DOOR (1.80M x 2.10M) WITH GLASS PANEL	SQ. METERS	1.80 x 2.10	
02	WOOD DOOR (1.80M x 2.10M) WITH SOLID PANEL	SQ. METERS	1.80 x 2.10	
03	WOOD DOOR (1.80M x 2.10M) WITH GLASS PANEL AND TRANSOM	SQ. METERS	1.80 x 2.10	
04	WOOD DOOR (1.80M x 2.10M) WITH SOLID PANEL AND TRANSOM	SQ. METERS	1.80 x 2.10	

NO.	DESCRIPTION	UNIT	QUANTITY	REMARKS
05	WOOD WINDOW (1.80M x 0.90M) WITH GLASS PANEL	SQ. METERS	1.80 x 0.90	
06	WOOD WINDOW (1.80M x 0.90M) WITH SOLID PANEL	SQ. METERS	1.80 x 0.90	
07	WOOD WINDOW (1.80M x 0.90M) WITH GLASS PANEL AND TRANSOM	SQ. METERS	1.80 x 0.90	
08	WOOD WINDOW (1.80M x 0.90M) WITH SOLID PANEL AND TRANSOM	SQ. METERS	1.80 x 0.90	

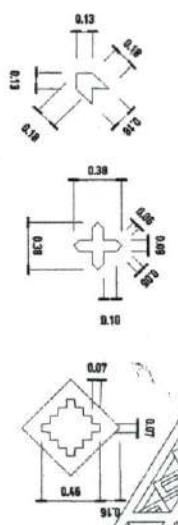
**SCHEDULE OF DOORS AND WINDOWS**

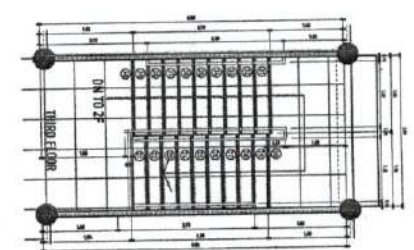
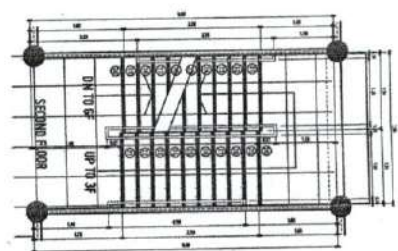
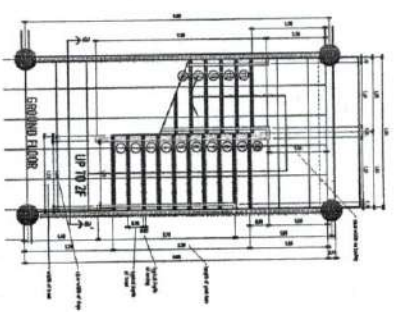


**RAILING DETAIL**

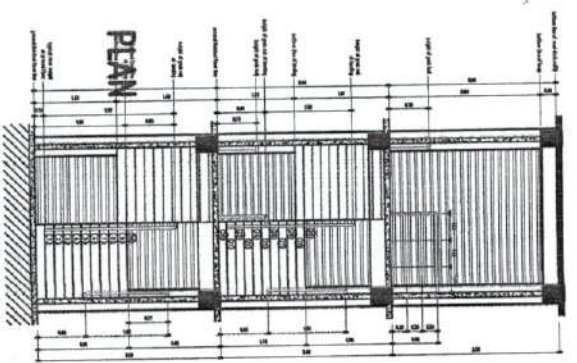


**STEEL BUFFER PATTERN DETAIL**

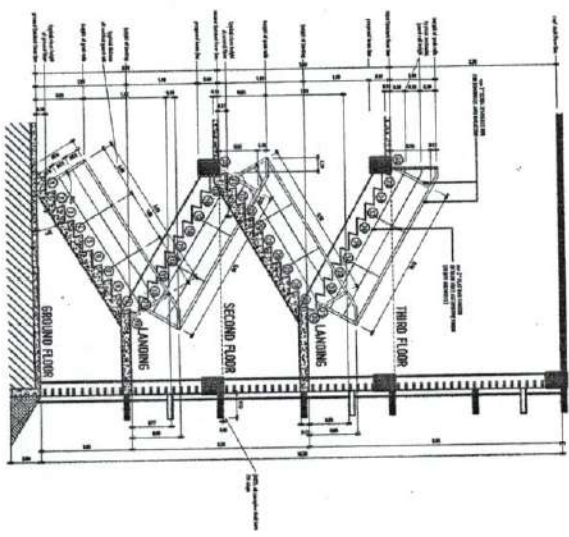




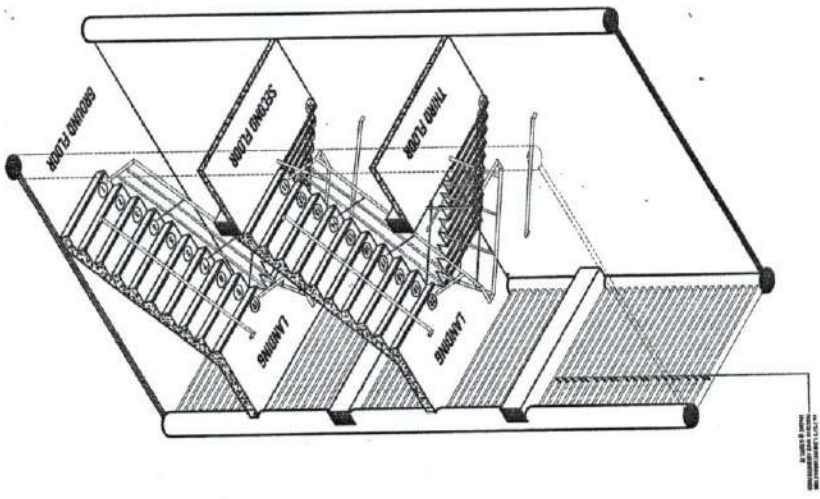
FLOOR PLAN



FRONT ELEVATION



SIDE ELEVATION



ISOMETRIC

MAIN STAIR DETAIL



REPUBLIC OF THE PHILIPPINES  
 UNIVERSITY OF SCIENCE AND TECHNOLOGY OF SOUTHERN PHILIPPINES  
 INTERDISCIPLINARY TRAINING AND FACILITY DEVELOPMENT UNIT  
 TELEPHONE: (8092) 774-01-02 / (8092) 774-03-04 / (8092) 774-05-06  
 WEBSITE: www.ustp.edu.ph

AR. JEFFER JOHN L. YAMA  
 ARCHITECT OF RECORD  
 REG. NO. 13313  
 PROFESSIONAL REGISTERED ARCHITECT  
 TEL. NO. 437-2117-22 / FAX NO. 437-2118-23

PROJECT  
 COMPLETION OF SPORTS COMPLEX AND RESIDENCES PHASE 1C  
 CLAD IN MECHANICAL, ELECTRICAL AND PLUMBING (MEEP) ROOM  
 UNIVERSITY OF SCIENCE AND TECHNOLOGY OF SOUTHERN PHILIPPINES

RECOMMENDING AGENCY  
 ARCHITECTURAL UNIT  
 PROJECT NO. 10-17-10000000-10000000

RECOMMENDING OFFICIAL  
 ATTY. ERWIN B. SANCOS  
 DEPT. OF BUILDING OFFICIALS - CIVIL ENGINEERING

ISSUED BY  
 DR. ANSOLORE, CULTURA II  
 PROJECT NO. 10-17-10000000-10000000

SHEET CONTENTS  
 DRAWING NO.  
 DATE  
 PER.



UNIVERSITY OF THE PHILIPPINES  
OFFICE OF THE BUILDINGS OFFICIAL  
CLAYTON K. DE GONZALES  
UNIVERSITY OF THE PHILIPPINES  
ARCHITECTURE PLANNING AND FACILITY DEVELOPMENT UNIT  
CLAYTON K. DE GONZALES, ARCHITECT  
CLAYTON K. DE GONZALES, ARCHITECT  
CLAYTON K. DE GONZALES, ARCHITECT

PROJECT: AR. JEFERSON L. TALIA  
ARCHITECT OF RECORD  
DATE: 11-11-13  
SCALE: 1/8" = 1'-0"

COMPLETION OF SPORTS COMPLEX AND RESIDENCES (PHASE 1C)  
CLAYTON K. DE GONZALES, ARCHITECT  
UNIVERSITY OF THE PHILIPPINES  
ARCHITECTURE PLANNING AND FACILITY DEVELOPMENT UNIT  
CLAYTON K. DE GONZALES, ARCHITECT  
CLAYTON K. DE GONZALES, ARCHITECT

RECOMMENDING APPROVAL:  
AR. JEFERSON L. TALIA  
ARCHITECT OF RECORD

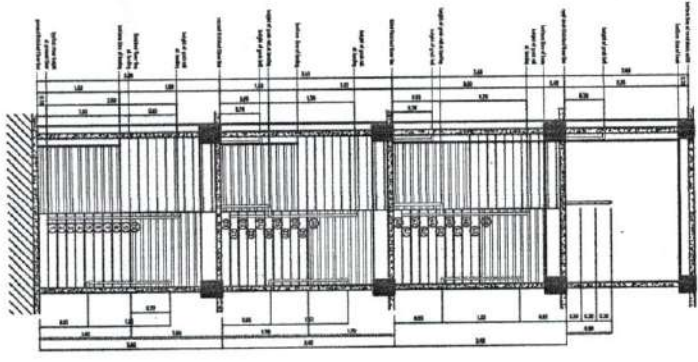
RECOMMENDING APPROVAL:  
ATTY. ERWIN G. BUCAR  
OFFICE OF THE ADMINISTRATOR & LEGAL ATTACHE

APPROVED BY:  
DR. AMBERLY B. CALIOTURA II  
OFFICE OF THE BUILDINGS OFFICIAL

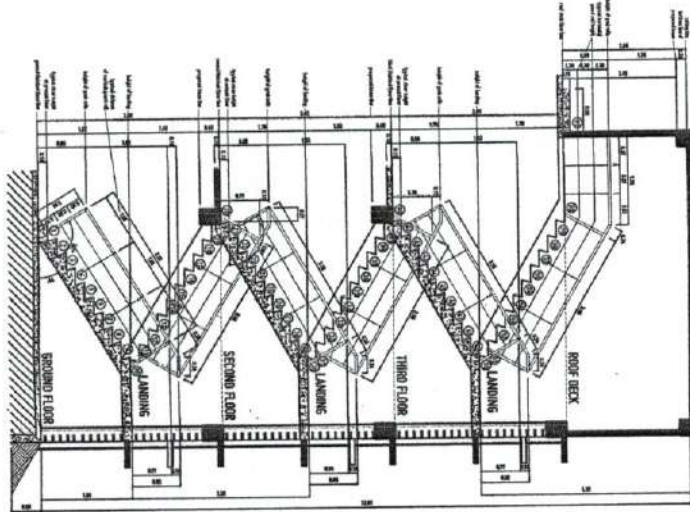
SHEET CONTENTS  
DATE: 11-11-13  
TIME: 11:11 AM

A15

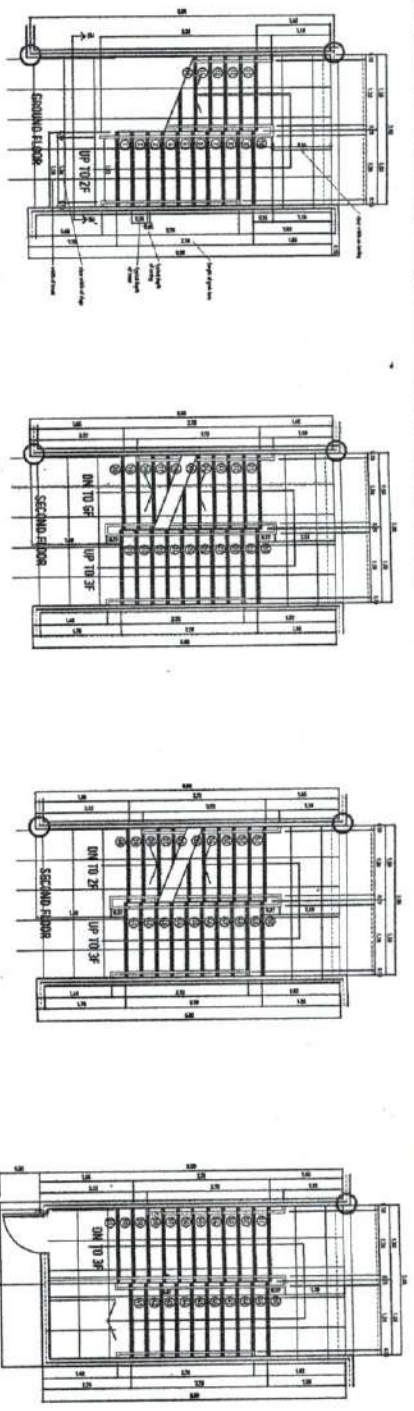
FRONT ELEVATION



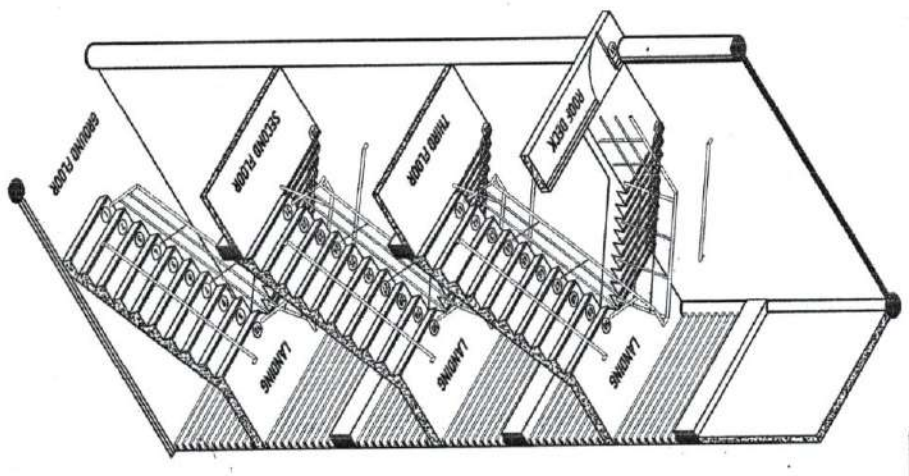
SIDE ELEVATION



FLOOR PLAN

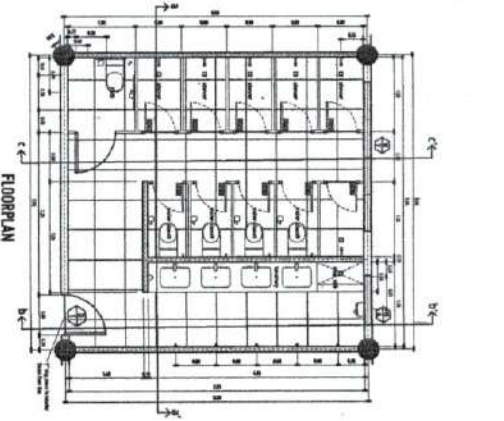


ISOMETRIC  
MAIN STAIR 2 DETAIL



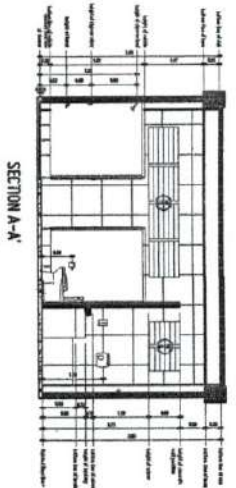
APPROVED BY:  
DR. AMBERLY B. CALIOTURA II  
OFFICE OF THE BUILDINGS OFFICIAL  
CLAYTON K. DE GONZALES

APPROVED BY:

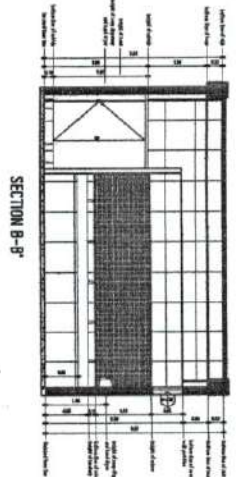


FLOORPLAN

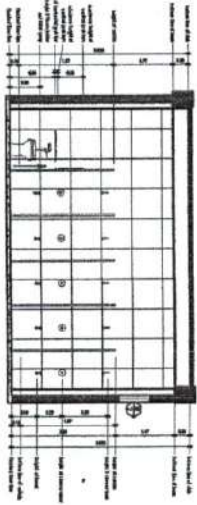
WOMEN'S PUBLIC TOILET AND BATH  
S E C T I O N S



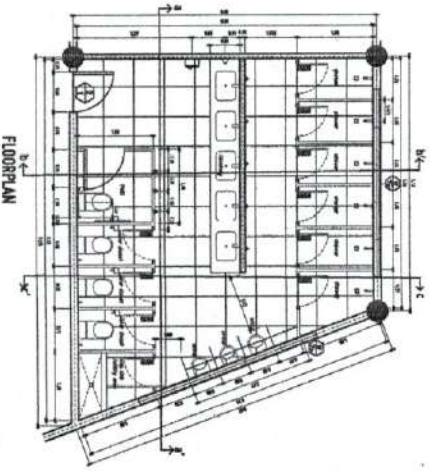
SECTION A-A'



SECTION B-B'

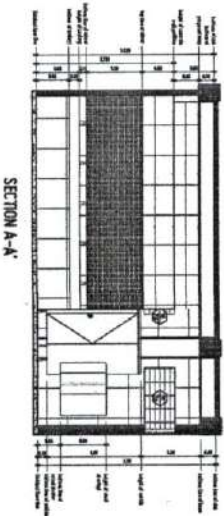


SECTION C-C'

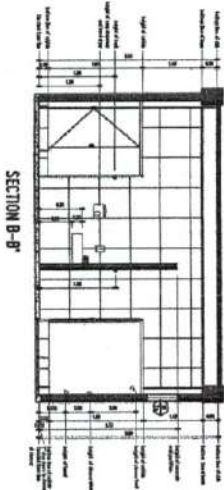


FLOORPLAN

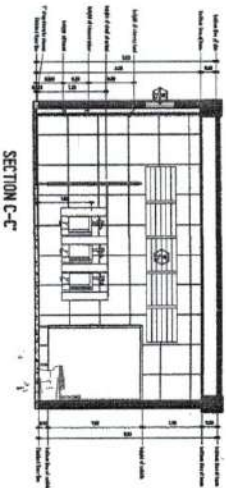
MEN'S PUBLIC TOILET AND BATH  
S E C T I O N S



SECTION A-A'



SECTION B-B'



SECTION C-C'



UNIVERSITY OF THE PHILIPPINES  
OFFICE OF ARCHITECTURAL  
DRAWING SERVICES  
UNIVERSITY OF THE PHILIPPINES  
DIWATA HALL, 1000 UNIVERSITY AVENUE  
DILORIM, QUEZON CITY, PHILIPPINES  
TEL: (632) 771-7111 FAX: (632) 771-7112  
WWW.USTIP.UPD.EDU.PH

PROJECT: MEN'S PUBLIC TOILET AND BATH  
DESIGNER: AR. JIFFER JOHN L. TALIA  
DATE: 11/11/2011  
SCALE: 1/8" = 1'-0"

PROJECT LOCATION: UNIVERSITY OF THE PHILIPPINES  
DIWATA HALL, 1000 UNIVERSITY AVENUE  
DILORIM, QUEZON CITY, PHILIPPINES  
OWNER: UNIVERSITY OF THE PHILIPPINES  
OFFICE OF ARCHITECTURAL DRAWING SERVICES

RECOMMENDING APPROVAL:  
AR. JEFFREY M. BAYAN  
ARCHITECT

RECOMMENDING APPROVAL:  
ATTY. BERNARDO B. BAYAN  
LEGAL COUNSEL

APPROVED BY:  
DR. AMARILIO B. CULTURA II  
PRESIDENT

SHEET CONTENTS:  
DATE: 11/11/2011  
NO. 1

**GENERAL NOTE:**

1. ALL ELECTRONIC WORKS HERE IN SHALL BE DONE ACCORDANCE WITH THE PROVISIONS OF THE LATEST EDITION OF THE PHILIPPINE ELECTRONICS CODE. THE RULES AND REGULATIONS OF THE LOCAL ENGINEERING AUTHORITIES AND THE REQUIREMENTS OF THE UTILITY TELEPHONE COMPANY.
2. ALL ELECTRONIC WORKS HERE IN INCLUDED SHALL BE EXECUTED BY THE PERSONNEL WITH ELECTRICAL EXPERIENCE UNDER THE DIRECT SUPERVISION OF A FULL TIME LICENSED ELECTRONICS ENGINEER. WORKS SHALL BE NEATLY PLACED, SECURELY FASTENED AND PROPERLY FINISHED.
3. THE CONTRACTOR SHALL VERIFY AND ORIENT THE ACTUAL LOCATION OF THE TAPPING POINT FOR CONNECTION TO COMMUNICATION SUPPLY. ALL MATERIALS SHALL BE BRAND NEW AND SHALL CONFORM WITH THE PROVISIONS OF THE UNDER WRITERS LABORATORIES INC. IN EVERY CASE WHERE SUCH A STANDARD HAS BEEN ESTABLISHED.
4. ALL CONDUITS MUST BE PROTECTED AGAINST DAMAGES BY THE ENTRANCE OF THE WATER AND FOREIGN MATTERS DURING CONSTRUCTION. ALL ENDS OF CONDUITS SHALL BE PLUGGED TO EXCLUDE MOISTURE AND DUST IMMEDIATELY AFTER THE CONDUITS ARE PLACED. UNLESS OTHERWISE SPECIFIED, ALL ELECTRONICS WIRING INSTALLATION SHALL BE USED RSC. THE MINIMUM SIZE OF CONDUIT SHALL BE 15MMH.
5. ALL RACEWAYS, WALL AND FLOOR PENETRATION SHALL BE PROVIDED WITH FIRE BARRIER OF THE APPROVED TYPE.
6. ALL OUTLET BOXES SHALL BE GALVANIZED GAGE NO. 16 DEEP TYPE WITH THE FACTORY KNOCKOUTS. PULLBOXES SHALL BE USED WHEN APPLICABLE FOR EASY PULLING OF WIRES AND SHALL BE IN ACCORDANCE WITH THE PHILIPPINE ELECTRICAL CODE REQUIREMENT. PREFERRED BRAND FOR JUNCTION, PULLBOXES OR UTILITY SQUARE BOXES SHALL BE FOMACO, ANCO, TINDO OR APPROVED EQUAL.
7. MOUNTING HEIGHTS OF DEVICES SHALL BE:
  - (SUBJECT TO ARCHITECTS APPROVAL PRIOR TO INSTALLATION)
8. ALL SPEAKER WIRING SHALL BE 2-0-75 SQ. MM SHIELDED SPEAKER WIRE.
9. NETWORK CABLES/ CONDUIT SHALL HAVE A MINIMUM DISTANCE OF 0.3M FROM POWER CONDUIT WHEN LAND PARALLEL AND MUST RUN PERPENDICULAR TO THE STEEL CONDUIT WHEN CUTTING ACROSS A POWER LINE.
10. THE PLANS AS DRAWN ARE BASED UPON THE ARCHITECTURAL PLANS AND THE DETAILS AND SHOWN CONDITION AS ACCURATELY AS IT IS POSSIBLE TO INDICATE THEM IN SCALE. THE PLANS ARE DIAGRAMMATIC AND DOES NOT NECESSARILY SHOW ALL FITTINGS NECESSARY TO FIT TO THE BUILDING CONDITIONS. THE LOCATIONS OF OUTLETS, APPARATUS AND APPLIANCES SHOWN ON THE PLANS ARE APPROXIMATE. THE CONTRACTORS SHALL BE HELD RESPONSIBLE FOR THEIR PROPER LOCATION IN ORDER TO MAKE THEM FIT WITH THE ARCHITECTURAL DETAILS AND INSTRUCTIONS FROM THE ENGINEER'S REPRESENTATIVE AT THE SITE.

**NOTES:**

1. FIRE ALARM SYSTEM SHALL BE CONSTRUCTION TYPE.
2. NETWORK CONDUIT SHALL BE 20MM O.D. 1/2" I.D. USE RSC FOR ALL.
3. ENOUGH CONDUIT FOR INSIDE WALL AND PVC OF CONDUIT THROUGH WALL.
4. ALL REER CONDUIT SHALL BE IN RACEWAY. MINIMUM SIZE 15MMH.

**A. END VIEW AND CONDUIT SCHEDULE**

CONDUIT SIZE (I.D. / O.D. TYPE)	NUMBER OF WIRE (I.C. CABLE TYPE)	CONDUIT SIZE (I.D. / O.D. TYPE)	NUMBER OF WIRE (I.C. CABLE TYPE)
20 / 25.5(A)	25	20 / 25.5(A)	25
25 / 30.5(A)	41	25 / 30.5(A)	41
32 / 40.1(A)	72	32 / 40.1(A)	72
40 / 50.1(A)	91	40 / 50.1(A)	91
50 / 60.2	154	50 / 60.2	154

**S. SYMBOLS**

- 1. FIRE ALARM CONTROL PANEL, IN LISTED BRAND
- 2. SMOKE DETECTOR - CEILING MOUNTED
- 3. SMOKE DETECTOR - WALL MOUNTED
- 4. HEAT DETECTOR - CEILING MOUNTED
- 5. FIRE ALARM STROBE LIGHT SIGNAL, IN LISTED BRAND
- 6. FIRE ALARM MANUAL CALL STATION, IN LISTED BRAND
- 7. FIRE ALARM SYSTEM WIRING BALL LINK
- 8. POWER SUPPLY/CHARGER TRANSFORMER
- 9. ELEVATORS
- 10. FIRE PROTECTION FLOW SWITCH CONTROL PANEL
- 11. ORIGINATOR CONTROL SWITCH/ALARM LOCATION
- 12. SIGNAL RECEPTION/TRANSMISSION FOR SIGNAL ALARM LOCATION
- 13. SIGNAL RECEPTION/TRANSMISSION FOR SIGNAL ALARM LOCATION
- 14. FIRE PUMP CONTROL PANEL
- 15. FIRE PUMP CONTROL PANEL



UNIVERSITY OF THE PHILIPPINES  
 OFFICE OF THE REGISTRAR  
 ENGINEERING BOARD  
 403 RAFFLES PLACE, MANILA  
 TEL: 334-4000, 334-4001, 334-4002, 334-4003, 334-4004, 334-4005, 334-4006, 334-4007, 334-4008, 334-4009, 334-4010, 334-4011, 334-4012, 334-4013, 334-4014, 334-4015, 334-4016, 334-4017, 334-4018, 334-4019, 334-4020, 334-4021, 334-4022, 334-4023, 334-4024, 334-4025, 334-4026, 334-4027, 334-4028, 334-4029, 334-4030, 334-4031, 334-4032, 334-4033, 334-4034, 334-4035, 334-4036, 334-4037, 334-4038, 334-4039, 334-4040, 334-4041, 334-4042, 334-4043, 334-4044, 334-4045, 334-4046, 334-4047, 334-4048, 334-4049, 334-4050, 334-4051, 334-4052, 334-4053, 334-4054, 334-4055, 334-4056, 334-4057, 334-4058, 334-4059, 334-4060, 334-4061, 334-4062, 334-4063, 334-4064, 334-4065, 334-4066, 334-4067, 334-4068, 334-4069, 334-4070, 334-4071, 334-4072, 334-4073, 334-4074, 334-4075, 334-4076, 334-4077, 334-4078, 334-4079, 334-4080, 334-4081, 334-4082, 334-4083, 334-4084, 334-4085, 334-4086, 334-4087, 334-4088, 334-4089, 334-4090, 334-4091, 334-4092, 334-4093, 334-4094, 334-4095, 334-4096, 334-4097, 334-4098, 334-4099, 334-4100, 334-4101, 334-4102, 334-4103, 334-4104, 334-4105, 334-4106, 334-4107, 334-4108, 334-4109, 334-4110, 334-4111, 334-4112, 334-4113, 334-4114, 334-4115, 334-4116, 334-4117, 334-4118, 334-4119, 334-4120, 334-4121, 334-4122, 334-4123, 334-4124, 334-4125, 334-4126, 334-4127, 334-4128, 334-4129, 334-4130, 334-4131, 334-4132, 334-4133, 334-4134, 334-4135, 334-4136, 334-4137, 334-4138, 334-4139, 334-4140, 334-4141, 334-4142, 334-4143, 334-4144, 334-4145, 334-4146, 334-4147, 334-4148, 334-4149, 334-4150, 334-4151, 334-4152, 334-4153, 334-4154, 334-4155, 334-4156, 334-4157, 334-4158, 334-4159, 334-4160, 334-4161, 334-4162, 334-4163, 334-4164, 334-4165, 334-4166, 334-4167, 334-4168, 334-4169, 334-4170, 334-4171, 334-4172, 334-4173, 334-4174, 334-4175, 334-4176, 334-4177, 334-4178, 334-4179, 334-4180, 334-4181, 334-4182, 334-4183, 334-4184, 334-4185, 334-4186, 334-4187, 334-4188, 334-4189, 334-4190, 334-4191, 334-4192, 334-4193, 334-4194, 334-4195, 334-4196, 334-4197, 334-4198, 334-4199, 334-4200, 334-4201, 334-4202, 334-4203, 334-4204, 334-4205, 334-4206, 334-4207, 334-4208, 334-4209, 334-4210, 334-4211, 334-4212, 334-4213, 334-4214, 334-4215, 334-4216, 334-4217, 334-4218, 334-4219, 334-4220, 334-4221, 334-4222, 334-4223, 334-4224, 334-4225, 334-4226, 334-4227, 334-4228, 334-4229, 334-4230, 334-4231, 334-4232, 334-4233, 334-4234, 334-4235, 334-4236, 334-4237, 334-4238, 334-4239, 334-4240, 334-4241, 334-4242, 334-4243, 334-4244, 334-4245, 334-4246, 334-4247, 334-4248, 334-4249, 334-4250, 334-4251, 334-4252, 334-4253, 334-4254, 334-4255, 334-4256, 334-4257, 334-4258, 334-4259, 334-4260, 334-4261, 334-4262, 334-4263, 334-4264, 334-4265, 334-4266, 334-4267, 334-4268, 334-4269, 334-4270, 334-4271, 334-4272, 334-4273, 334-4274, 334-4275, 334-4276, 334-4277, 334-4278, 334-4279, 334-4280, 334-4281, 334-4282, 334-4283, 334-4284, 334-4285, 334-4286, 334-4287, 334-4288, 334-4289, 334-4290, 334-4291, 334-4292, 334-4293, 334-4294, 334-4295, 334-4296, 334-4297, 334-4298, 334-4299, 334-4300, 334-4301, 334-4302, 334-4303, 334-4304, 334-4305, 334-4306, 334-4307, 334-4308, 334-4309, 334-4310, 334-4311, 334-4312, 334-4313, 334-4314, 334-4315, 334-4316, 334-4317, 334-4318, 334-4319, 334-4320, 334-4321, 334-4322, 334-4323, 334-4324, 334-4325, 334-4326, 334-4327, 334-4328, 334-4329, 334-4330, 334-4331, 334-4332, 334-4333, 334-4334, 334-4335, 334-4336, 334-4337, 334-4338, 334-4339, 334-4340, 334-4341, 334-4342, 334-4343, 334-4344, 334-4345, 334-4346, 334-4347, 334-4348, 334-4349, 334-4350, 334-4351, 334-4352, 334-4353, 334-4354, 334-4355, 334-4356, 334-4357, 334-4358, 334-4359, 334-4360, 334-4361, 334-4362, 334-4363, 334-4364, 334-4365, 334-4366, 334-4367, 334-4368, 334-4369, 334-4370, 334-4371, 334-4372, 334-4373, 334-4374, 334-4375, 334-4376, 334-4377, 334-4378, 334-4379, 334-4380, 334-4381, 334-4382, 334-4383, 334-4384, 334-4385, 334-4386, 334-4387, 334-4388, 334-4389, 334-4390, 334-4391, 334-4392, 334-4393, 334-4394, 334-4395, 334-4396, 334-4397, 334-4398, 334-4399, 334-4400, 334-4401, 334-4402, 334-4403, 334-4404, 334-4405, 334-4406, 334-4407, 334-4408, 334-4409, 334-4410, 334-4411, 334-4412, 334-4413, 334-4414, 334-4415, 334-4416, 334-4417, 334-4418, 334-4419, 334-4420, 334-4421, 334-4422, 334-4423, 334-4424, 334-4425, 334-4426, 334-4427, 334-4428, 334-4429, 334-4430, 334-4431, 334-4432, 334-4433, 334-4434, 334-4435, 334-4436, 334-4437, 334-4438, 334-4439, 334-4440, 334-4441, 334-4442, 334-4443, 334-4444, 334-4445, 334-4446, 334-4447, 334-4448, 334-4449, 334-4450, 334-4451, 334-4452, 334-4453, 334-4454, 334-4455, 334-4456, 334-4457, 334-4458, 334-4459, 334-4460, 334-4461, 334-4462, 334-4463, 334-4464, 334-4465, 334-4466, 334-4467, 334-4468, 334-4469, 334-4470, 334-4471, 334-4472, 334-4473, 334-4474, 334-4475, 334-4476, 334-4477, 334-4478, 334-4479, 334-4480, 334-4481, 334-4482, 334-4483, 334-4484, 334-4485, 334-4486, 334-4487, 334-4488, 334-4489, 334-4490, 334-4491, 334-4492, 334-4493, 334-4494, 334-4495, 334-4496, 334-4497, 334-4498, 334-4499, 334-4500, 334-4501, 334-4502, 334-4503, 334-4504, 334-4505, 334-4506, 334-4507, 334-4508, 334-4509, 334-4510, 334-4511, 334-4512, 334-4513, 334-4514, 334-4515, 334-4516, 334-4517, 334-4518, 334-4519, 334-4520, 334-4521, 334-4522, 334-4523, 334-4524, 334-4525, 334-4526, 334-4527, 334-4528, 334-4529, 334-4530, 334-4531, 334-4532, 334-4533, 334-4534, 334-4535, 334-4536, 334-4537, 334-4538, 334-4539, 334-4540, 334-4541, 334-4542, 334-4543, 334-4544, 334-4545, 334-4546, 334-4547, 334-4548, 334-4549, 334-4550, 334-4551, 334-4552, 334-4553, 334-4554, 334-4555, 334-4556, 334-4557, 334-4558, 334-4559, 334-4560, 334-4561, 334-4562, 334-4563, 334-4564, 334-4565, 334-4566, 334-4567, 334-4568, 334-4569, 334-4570, 334-4571, 334-4572, 334-4573, 334-4574, 334-4575, 334-4576, 334-4577, 334-4578, 334-4579, 334-4580, 334-4581, 334-4582, 334-4583, 334-4584, 334-4585, 334-4586, 334-4587, 334-4588, 334-4589, 334-4590, 334-4591, 334-4592, 334-4593, 334-4594, 334-4595, 334-4596, 334-4597, 334-4598, 334-4599, 334-4600, 334-4601, 334-4602, 334-4603, 334-4604, 334-4605, 334-4606, 334-4607, 334-4608, 334-4609, 334-4610, 334-4611, 334-4612, 334-4613, 334-4614, 334-4615, 334-4616, 334-4617, 334-4618, 334-4619, 334-4620, 334-4621, 334-4622, 334-4623, 334-4624, 334-4625, 334-4626, 334-4627, 334-4628, 334-4629, 334-4630, 334-4631, 334-4632, 334-4633, 334-4634, 334-4635, 334-4636, 334-4637, 334-4638, 334-4639, 334-4640, 334-4641, 334-4642, 334-4643, 334-4644, 334-4645, 334-4646, 334-4647, 334-4648, 334-4649, 334-4650, 334-4651, 334-4652, 334-4653, 334-4654, 334-4655, 334-4656, 334-4657, 334-4658, 334-4659, 334-4660, 334-4661, 334-4662, 334-4663, 334-4664, 334-4665, 334-4666, 334-4667, 334-4668, 334-4669, 334-4670, 334-4671, 334-4672, 334-4673, 334-4674, 334-4675, 334-4676, 334-4677, 334-4678, 334-4679, 334-4680, 334-4681, 334-4682, 334-4683, 334-4684, 334-4685, 334-4686, 334-4687, 334-4688, 334-4689, 334-4690, 334-4691, 334-4692, 334-4693, 334-4694, 334-4695, 334-4696, 334-4697, 334-4698, 334-4699, 334-4700, 334-4701, 334-4702, 334-4703, 334-4704, 334-4705, 334-4706, 334-4707, 334-4708, 334-4709, 334-4710, 334-4711, 334-4712, 334-4713, 334-4714, 334-4715, 334-4716, 334-4717, 334-4718, 334-4719, 334-4720, 334-4721, 334-4722, 334-4723, 334-4724, 334-4725, 334-4726, 334-4727, 334-4728, 334-4729, 334-4730, 334-4731, 334-4732, 334-4733, 334-4734, 334-4735, 334-4736, 334-4737, 334-4738, 334-4739, 334-4740, 334-4741, 334-4742, 334-4743, 334-4744, 334-4745, 334-4746, 334-4747, 334-4748, 334-4749, 334-4750, 334-4751, 334-4752, 334-4753, 334-4754, 334-4755, 334-4756, 334-4757, 334-4758, 334-4759, 334-4760, 334-4761, 334-4762, 334-4763, 334-4764, 334-4765, 334-4766, 334-4767, 334-4768, 334-4769, 334-4770, 334-4771, 334-4772, 334-4773, 334-4774, 334-4775, 334-4776, 334-4777, 334-4778, 334-4779, 334-4780, 334-4781, 334-4782, 334-4783, 334-4784, 334-4785, 334-4786, 334-4787, 334-4788, 334-4789, 334-4790, 334-4791, 334-4792, 334-4793, 334-4794, 334-4795, 334-4796, 334-4797, 334-4798, 334-4799, 334-4800, 334-4801, 334-4802, 334-4803, 334-4804, 334-4805, 334-4806, 334-4807, 334-4808, 334-4809, 334-4810, 334-4811, 334-4812, 334-4813, 334-4814, 334-4815, 334-4816, 334-4817, 334-4818, 334-4819, 334-4820, 334-4821, 334-4822, 334-4823, 334-4824, 334-4825, 334-4826, 334-4827, 334-4828, 334-4829, 334-4830, 334-4831, 334-4832, 334-4833, 334-4834, 334-4835, 334-4836, 334-4837, 334-4838, 334-4839, 334-4840, 334-4841, 334-4842, 334-4843, 334-4844, 334-4845, 334-4846, 334-4847, 334-4848, 334-4849, 334-4850, 334-4851, 334-4852, 334-4853, 334-4854, 334-4855, 334-4856, 334-4857, 334-4858, 334-4859, 334-4860, 334-4861, 334-4862, 334-4863, 334-4864, 334-4865, 334-4866, 334-4867, 334-4868, 334-4869, 334-4870, 334-4871, 334-4872, 334-4873, 334-4874, 334-4875, 334-4876, 334-4877, 334-4878, 334-4879, 334-4880, 334-4881, 334-4882, 334-4883, 334-4884, 334-4885, 334-4886, 334-4887, 334-4888, 334-4889, 334-4890, 334-4891, 334-4892, 334-4893, 334-4894, 334-4895, 334-4896, 334-4897, 334-4898, 334-4899, 334-4900, 334-4901, 334-4902, 334-4903, 334-4904, 334-4905, 334-4906, 334-4907, 334-4908, 334-4909, 334-4910, 334-4911, 334-4912, 334-4913, 334-4914, 334-4915, 334-4916, 334-4917, 334-4918, 334-4919, 334-4920, 334-4921, 334-4922, 334-4923, 334-4924, 334-4925, 334-4926, 334-4927, 334-4928, 334-4929, 334-4930, 334-4931, 334-4932, 334-4933, 334-4934, 334-4935, 334-4936, 334-4937, 334-4938, 334-4939, 334-4940, 334-4941, 334-4942, 334-4943, 334-4944, 334-4945, 334-4946, 334-4947, 334-4948, 334-4949, 334-4950, 334-4951, 334-4952, 334-4953, 334-4954, 334-4955, 334-4956, 334-4957, 334-4958, 334-4959, 334-4960, 334-4961, 334-4962, 334-4963, 334-4964, 334-4965, 334-4966, 334-4967, 334-4968, 334-4969, 334-4970, 334-4971, 334-4972, 334-4973, 334-4974, 334-4975, 334-4976, 334-4977, 334-4978, 334-4979, 334-4980, 334-4981, 334-4982, 334-4983, 334-4984, 334-4985, 334-4986, 334-4987, 334-4988, 334-4989, 334-4990, 334-4991, 334-4992, 334-4993, 334-4994, 334-4995, 334-4996, 334-4997, 334-4998, 334-4999, 334-5000, 334-5001, 334-5002, 334-5003, 334-5004, 334-5005, 334-5006, 334-5007, 334-5008, 334-5009, 334-5010, 334-5011, 334-5012, 334-5013, 334-5014, 334-5015, 334-5016, 334-5017, 334-5018, 334-5019, 334-5020, 334-5021, 334-5022, 334-5023, 334-5024, 334-5025, 334-5026, 334-5027, 334-5028, 334-5029, 334-5030, 334-5031, 334-5032, 334-5033, 334-5034, 334-5035, 334-5036, 334-5037, 334-5038, 334-5039, 334-5040, 334-5041, 334-5042, 334-5043, 334



UNIVERSITY OF THE PHILIPPINES  
 COLLEGE OF ENGINEERING  
 DEPARTMENT OF ELECTRICAL ENGINEERING  
 UNIVERSITY OF THE PHILIPPINES  
 DILMUN CAMPUS  
 DILMUN, CAVITE

PROFESSIONAL ELECTRONICS ENGINEER  
 REG. NO. 12345  
 DATE: 1/15/2024

PROJECT: COMPLETION OF SPORTS COMPLEX AND RESIDENCES PHASE 120  
 CLIENT: UNIVERSITY OF THE PHILIPPINES  
 UNIVERSITY OF THE PHILIPPINES  
 UNIVERSITY OF THE PHILIPPINES

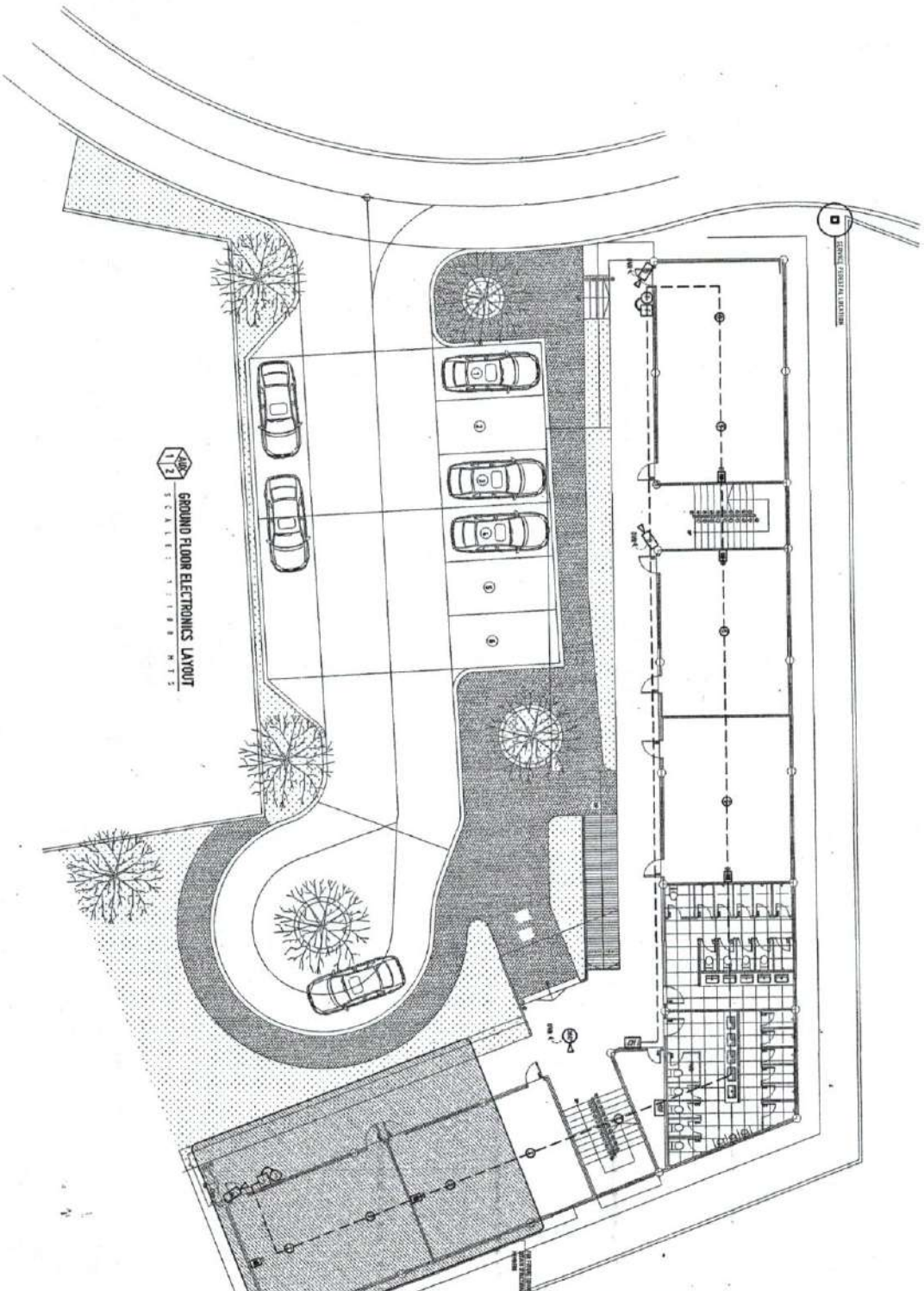
REGISTERED PROFESSIONAL  
 AR FERRER  
 REGISTERED PROFESSIONAL  
 ATT'Y ERWIN B. BORDO  
 REGISTERED PROFESSIONAL  
 DR. AMBERSON B. OLTODIA II

REGISTERED PROFESSIONAL  
 DR. AMBERSON B. OLTODIA II

REGISTERED PROFESSIONAL  
 DR. AMBERSON B. OLTODIA II

SHEET COUNT: 12  
 SHEET NO. 12

AUX2



GROUND FLOOR ELECTRONICS LAYOUT  
 SCALE: 1:1000

NOTES:

1. SYMBOLS
2. TELEPHONE AND CABLE TV SERVICE BOX, INSURED ROOM-42, 1500MM X 1500MM, MOUNTED AT WALL NEAR SERVICE ENTRANCE OR IF POSSIBLE AT THE PERIPHERAL
3. MAIN DISTRIBUTION FRAME
4. TELEPHONE AND CABLE TV SERVICE BOX, INSURED ROOM-42, 1500MM X 1500MM, MOUNTED AT WALL NEAR SERVICE ENTRANCE OR IF POSSIBLE AT THE PERIPHERAL

CONDUIT SIZE	TYPE	NUMBER OF TRAYS	TYPE OF TRAY
20	PVC	1	100-1000
25	PVC	1	100-1000
32	PVC	1	100-1000
40	PVC	1	100-1000
50	PVC	1	100-1000
63	PVC	1	100-1000
75	PVC	1	100-1000
90	PVC	1	100-1000
110	PVC	1	100-1000
125	PVC	1	100-1000
150	PVC	1	100-1000
175	PVC	1	100-1000
200	PVC	1	100-1000

NOTE: CABLE SHALL HAVE VIBRATION LOCKS SLACK

- GENERAL NOTES:
1. ALL WORK SHALL BE IN ACCORDANCE WITH THE NATIONAL ELECTRICAL CODE (NEC) AND THE NATIONAL ELECTRICAL REGULATIONS (NER).
  2. ALL WORK SHALL BE IN ACCORDANCE WITH THE NATIONAL ELECTRICAL REGULATIONS (NER).
  3. ALL WORK SHALL BE IN ACCORDANCE WITH THE NATIONAL ELECTRICAL REGULATIONS (NER).
  4. ALL WORK SHALL BE IN ACCORDANCE WITH THE NATIONAL ELECTRICAL REGULATIONS (NER).
  5. ALL WORK SHALL BE IN ACCORDANCE WITH THE NATIONAL ELECTRICAL REGULATIONS (NER).
  6. ALL WORK SHALL BE IN ACCORDANCE WITH THE NATIONAL ELECTRICAL REGULATIONS (NER).
  7. ALL WORK SHALL BE IN ACCORDANCE WITH THE NATIONAL ELECTRICAL REGULATIONS (NER).
  8. ALL WORK SHALL BE IN ACCORDANCE WITH THE NATIONAL ELECTRICAL REGULATIONS (NER).
  9. ALL WORK SHALL BE IN ACCORDANCE WITH THE NATIONAL ELECTRICAL REGULATIONS (NER).
  10. ALL WORK SHALL BE IN ACCORDANCE WITH THE NATIONAL ELECTRICAL REGULATIONS (NER).

ELECTRONICS

REGISTERED PROFESSIONAL  
 OFFICE OF THE BUILDING OFFICIAL





