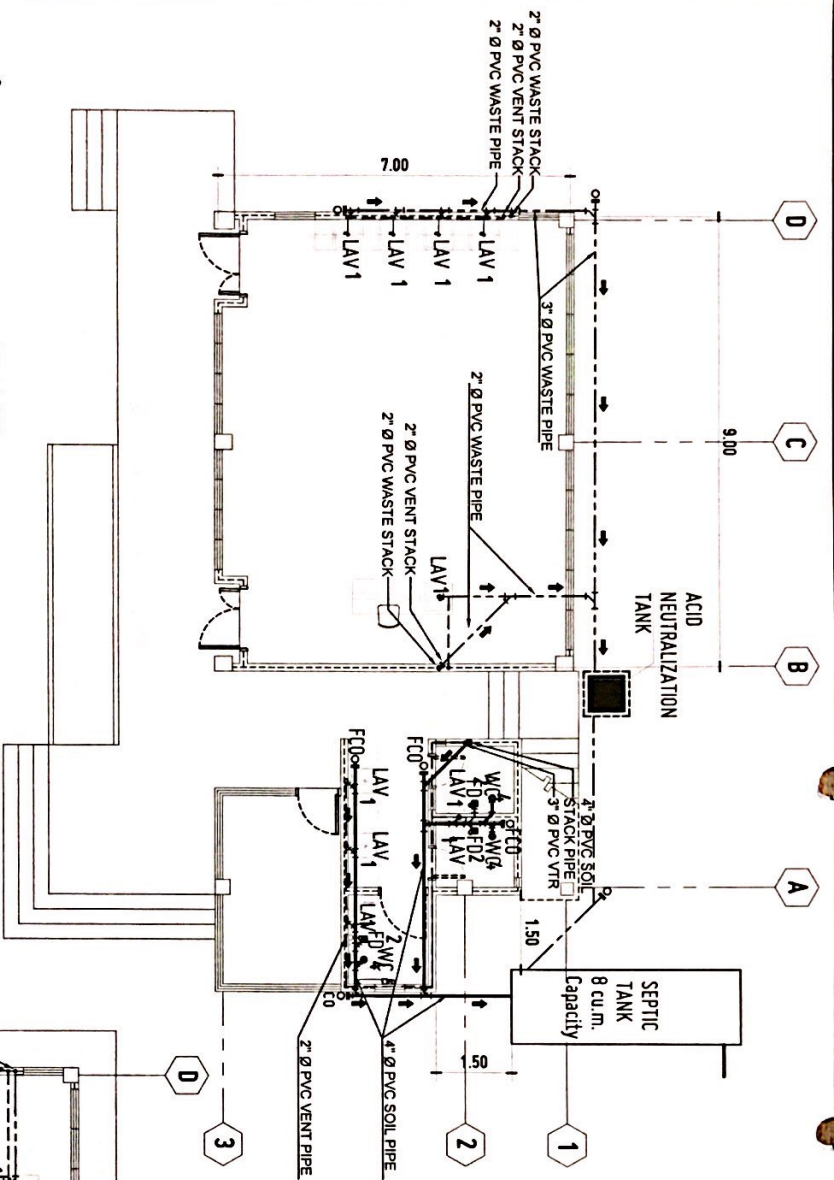
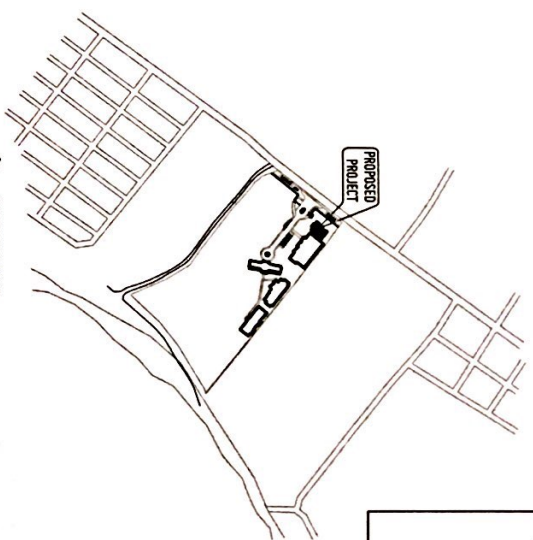


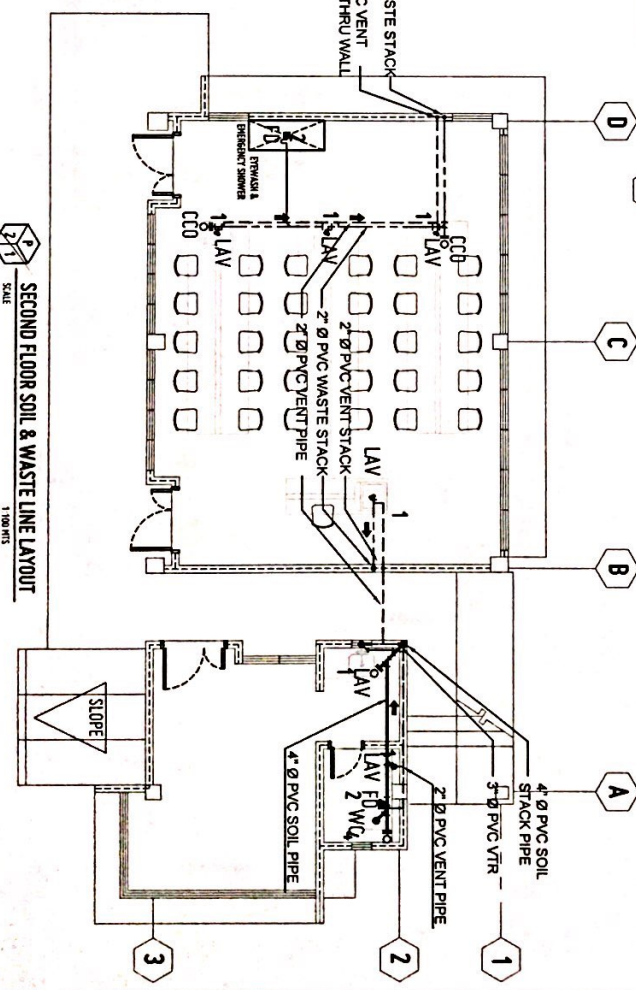
GROUND FLOOR SOIL & WASTE LINE LAYOUT

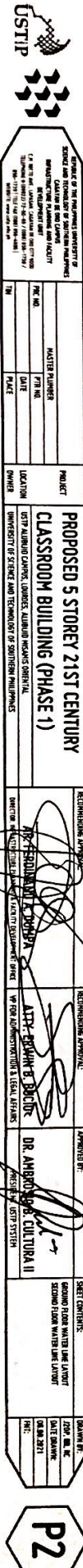


VICINITY MAP
NOT TO SCALE



SECOND FLOOR SOIL & WASTE LINE LAYOUT
SCALE 1/100 HITS

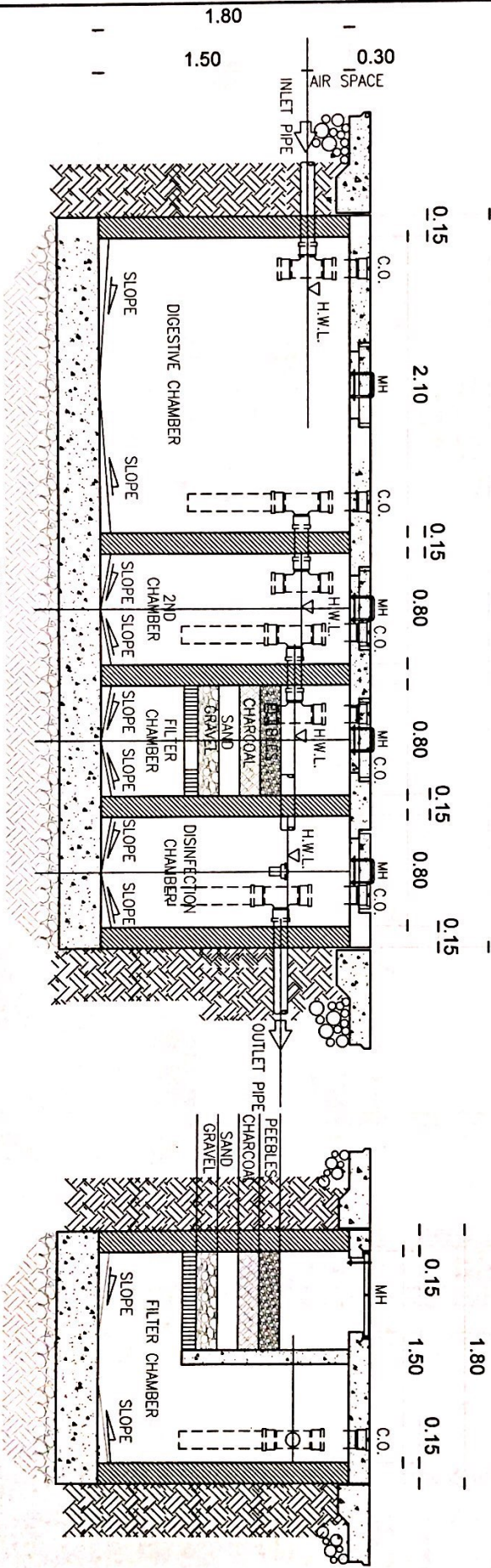














PLAN 5.25



SECTION

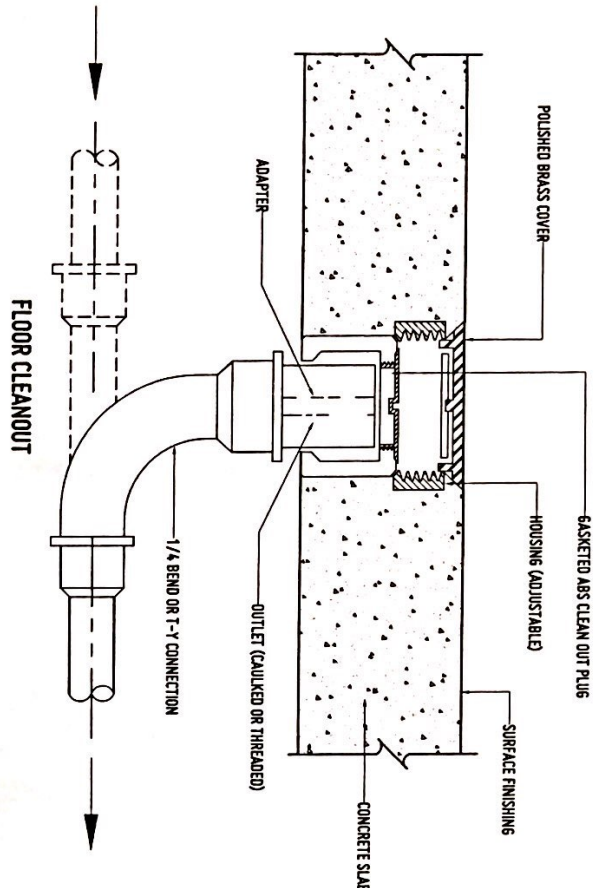
SECTION A

<div></div> <div>OFFICE OF THE UNIVERSITY SUPERVISOR OF SCIENCE AND TECHNOLOGY RESEARCH AND INNOVATION BUILDING/IT CLIMATE AND FACILITY DEVELOPMENT UNIT 12, 13th FL, 14th Floor, University of the Philippines - Diliman, Quezon City 1500 1500-1113 (TELEPHONE NO.) 1500-1113 (FAX NO.) 1500-1113 (E-MAIL ADDRESS)</div>									
<table><tr><td colspan="2">PROJECT NUMBER</td></tr><tr><td>PRJ NO.</td><td>PLN NO.</td></tr><tr><td>DATE</td><td>PLACE</td></tr></table>		PROJECT NUMBER		PRJ NO.	PLN NO.	DATE	PLACE	PROJECT	
PROJECT NUMBER									
PRJ NO.	PLN NO.								
DATE	PLACE								
PROPOSED 5 STOREY 21ST CENTURY CLASSROOM BUILDING (PHASE 1)		UNTP BUILDING CLIMATE, CONSTRUCTION MATERIALS UNIVERSITY OF THE PHILIPPINES UNIVERSITY OF THE PHILIPPINES							
<div> MR. CESAR B. BUIDES</div>		<div> MR. EDWIN B. BUIDES</div>							
<div> DR. ANDRES M. CALTUBA II</div>		<div> MR. CESAR B. BUIDES</div>							
SHEET CONTENTS: SHEET 1: MAIN PLAN - 1st FLOOR SHEET 2: MAIN PLAN - 2nd FLOOR SHEET 3: MAIN PLAN - 3rd FLOOR SHEET 4: MAIN PLAN - 4th FLOOR SHEET 5: MAIN PLAN - 5th FLOOR SHEET 6: MAIN PLAN - 6th FLOOR SHEET 7: MAIN PLAN - 7th FLOOR SHEET 8: MAIN PLAN - 8th FLOOR SHEET 9: MAIN PLAN - 9th FLOOR SHEET 10: MAIN PLAN - 10th FLOOR SHEET 11: MAIN PLAN - 11th FLOOR SHEET 12: MAIN PLAN - 12th FLOOR SHEET 13: MAIN PLAN - 13th FLOOR SHEET 14: MAIN PLAN - 14th FLOOR SHEET 15: MAIN PLAN - 15th FLOOR SHEET 16: MAIN PLAN - 16th FLOOR SHEET 17: MAIN PLAN - 17th FLOOR SHEET 18: MAIN PLAN - 18th FLOOR SHEET 19: MAIN PLAN - 19th FLOOR SHEET 20: MAIN PLAN - 20th FLOOR SHEET 21: MAIN PLAN - 21st FLOOR SHEET 22: MAIN PLAN - 22nd FLOOR SHEET 23: MAIN PLAN - 23rd FLOOR SHEET 24: MAIN PLAN - 24th FLOOR SHEET 25: MAIN PLAN - 25th FLOOR SHEET 26: MAIN PLAN - 26th FLOOR SHEET 27: MAIN PLAN - 27th FLOOR SHEET 28: MAIN PLAN - 28th FLOOR SHEET 29: MAIN PLAN - 29th FLOOR SHEET 30: MAIN PLAN - 30th FLOOR SHEET 31: MAIN PLAN - 31st FLOOR SHEET 32: MAIN PLAN - 32nd FLOOR SHEET 33: MAIN PLAN - 33rd FLOOR SHEET 34: MAIN PLAN - 34th FLOOR SHEET 35: MAIN PLAN - 35th FLOOR SHEET 36: MAIN PLAN - 36th FLOOR SHEET 37: MAIN PLAN - 37th FLOOR SHEET 38: MAIN PLAN - 38th FLOOR SHEET 39: MAIN PLAN - 39th FLOOR SHEET 40: MAIN PLAN - 40th FLOOR SHEET 41: MAIN PLAN - 41st FLOOR SHEET 42: MAIN PLAN - 42nd FLOOR SHEET 43: MAIN PLAN - 43rd FLOOR SHEET 44: MAIN PLAN - 44th FLOOR SHEET 45: MAIN PLAN - 45th FLOOR SHEET 46: MAIN PLAN - 46th FLOOR SHEET 47: MAIN PLAN - 47th FLOOR SHEET 48: MAIN PLAN - 48th FLOOR SHEET 49: MAIN PLAN - 49th FLOOR SHEET 50: MAIN PLAN - 50th FLOOR SHEET 51: MAIN PLAN - 51st FLOOR SHEET 52: MAIN PLAN - 52nd FLOOR SHEET 53: MAIN PLAN - 53rd FLOOR SHEET 54: MAIN PLAN - 54th FLOOR SHEET 55: MAIN PLAN - 55th FLOOR SHEET 56: MAIN PLAN - 56th FLOOR SHEET 57: MAIN PLAN - 57th FLOOR SHEET 58: MAIN PLAN - 58th FLOOR SHEET 59: MAIN PLAN - 59th FLOOR SHEET 60: MAIN PLAN - 60th FLOOR SHEET 61: MAIN PLAN - 61st FLOOR SHEET 62: MAIN PLAN - 62nd FLOOR SHEET 63: MAIN PLAN - 63rd FLOOR SHEET 64: MAIN PLAN - 64th FLOOR SHEET 65: MAIN PLAN - 65th FLOOR SHEET 66: MAIN PLAN - 66th FLOOR SHEET 67: MAIN PLAN - 67th FLOOR SHEET 68: MAIN PLAN - 68th FLOOR SHEET 69: MAIN PLAN - 69th FLOOR SHEET 70: MAIN PLAN - 70th FLOOR SHEET 71: MAIN PLAN - 71st FLOOR SHEET 72: MAIN PLAN - 72nd FLOOR SHEET 73: MAIN PLAN - 73rd FLOOR SHEET 74: MAIN PLAN - 74th FLOOR SHEET 75: MAIN PLAN - 75th FLOOR SHEET 76: MAIN PLAN - 76th FLOOR SHEET 77: MAIN PLAN - 77th FLOOR SHEET 78: MAIN PLAN - 78th FLOOR SHEET 79: MAIN PLAN - 79th FLOOR SHEET 80: MAIN PLAN - 80th FLOOR SHEET 81: MAIN PLAN - 81st FLOOR SHEET 82: MAIN PLAN - 82nd FLOOR SHEET 83: MAIN PLAN - 83rd FLOOR SHEET 84: MAIN PLAN - 84th FLOOR SHEET 85: MAIN PLAN - 85th FLOOR SHEET 86: MAIN PLAN - 86th FLOOR SHEET 87: MAIN PLAN - 87th FLOOR SHEET 88: MAIN PLAN - 88th FLOOR SHEET 89: MAIN PLAN - 89th FLOOR SHEET 90: MAIN PLAN - 90th FLOOR SHEET 91: MAIN PLAN - 91st FLOOR SHEET 92: MAIN PLAN - 92nd FLOOR SHEET 93: MAIN PLAN - 93rd FLOOR SHEET 94: MAIN PLAN - 94th FLOOR SHEET 95: MAIN PLAN - 95th FLOOR SHEET 96: MAIN PLAN - 96th FLOOR SHEET 97: MAIN PLAN - 97th FLOOR SHEET 98: MAIN PLAN - 98th FLOOR SHEET 99: MAIN PLAN - 99th FLOOR SHEET 100: MAIN PLAN - 100th FLOOR SHEET 101: MAIN PLAN - 101st FLOOR SHEET 102: MAIN PLAN - 102nd FLOOR SHEET 103: MAIN PLAN - 103rd FLOOR SHEET 104: MAIN PLAN - 104th FLOOR SHEET 105: MAIN PLAN - 105th FLOOR SHEET 106: MAIN PLAN - 106th FLOOR SHEET 107: MAIN PLAN - 107th FLOOR SHEET 108: MAIN PLAN - 108th FLOOR SHEET 109: MAIN PLAN - 109th FLOOR SHEET 110: MAIN PLAN - 110th FLOOR SHEET 111: MAIN PLAN - 111th FLOOR SHEET 112: MAIN PLAN - 112th FLOOR SHEET 113: MAIN PLAN - 113th FLOOR SHEET 114: MAIN PLAN - 114th FLOOR SHEET 115: MAIN PLAN - 115th FLOOR SHEET 116: MAIN PLAN - 116th FLOOR SHEET 117: MAIN PLAN - 117th FLOOR SHEET 118: MAIN PLAN - 118th FLOOR SHEET 119: MAIN PLAN - 119th FLOOR SHEET 120: MAIN PLAN - 120th FLOOR SHEET 121: MAIN PLAN - 121st FLOOR SHEET 122: MAIN PLAN - 122nd FLOOR SHEET 123: MAIN PLAN - 123rd FLOOR SHEET 124: MAIN PLAN - 124th FLOOR SHEET 125: MAIN PLAN - 125th FLOOR SHEET 126: MAIN PLAN - 126th FLOOR SHEET 127: MAIN PLAN - 127th FLOOR SHEET 128: MAIN PLAN - 128th FLOOR SHEET 129: MAIN PLAN - 129th FLOOR SHEET 130: MAIN PLAN - 130th FLOOR SHEET 131: MAIN PLAN - 131st FLOOR SHEET 132: MAIN PLAN - 132nd FLOOR SHEET 133: MAIN PLAN - 133rd FLOOR SHEET 134: MAIN PLAN - 134th FLOOR SHEET 135: MAIN PLAN - 135th FLOOR SHEET 136: MAIN PLAN - 136th FLOOR SHEET 137: MAIN PLAN - 137th FLOOR SHEET 138: MAIN PLAN - 138th FLOOR SHEET 139: MAIN PLAN - 139th FLOOR SHEET 140: MAIN PLAN - 140th FLOOR SHEET 141: MAIN PLAN - 141st FLOOR SHEET 142: MAIN PLAN - 142nd FLOOR SHEET 143: MAIN PLAN - 143rd FLOOR SHEET 144: MAIN PLAN - 144th FLOOR SHEET 145: MAIN PLAN - 145th FLOOR SHEET 146: MAIN PLAN - 146th FLOOR SHEET 147: MAIN PLAN - 147th FLOOR SHEET 148: MAIN PLAN - 148th FLOOR SHEET 149: MAIN PLAN - 149th FLOOR SHEET 150: MAIN PLAN - 150th FLOOR SHEET 151: MAIN PLAN - 151st FLOOR SHEET 152: MAIN PLAN - 152nd FLOOR SHEET 153: MAIN PLAN - 153rd FLOOR SHEET 154: MAIN PLAN - 154th FLOOR SHEET 155: MAIN PLAN - 155th FLOOR SHEET 156: MAIN PLAN - 156th FLOOR SHEET 157: MAIN PLAN - 157th FLOOR SHEET 158: MAIN PLAN - 158th FLOOR SHEET 159: MAIN PLAN - 159th FLOOR SHEET 160: MAIN PLAN - 160th FLOOR SHEET 161: MAIN PLAN - 161st FLOOR SHEET 162: MAIN PLAN - 162nd FLOOR SHEET 163: MAIN PLAN - 163rd FLOOR SHEET 164: MAIN PLAN - 164th FLOOR SHEET 165: MAIN PLAN - 165th FLOOR SHEET 166: MAIN PLAN - 166th FLOOR SHEET 167: MAIN PLAN - 167th FLOOR SHEET 168: MAIN PLAN - 168th FLOOR SHEET 169: MAIN PLAN - 169th FLOOR SHEET 170: MAIN PLAN - 170th FLOOR SHEET 171: MAIN PLAN - 171st FLOOR SHEET 172: MAIN PLAN - 172nd FLOOR SHEET 173: MAIN PLAN - 173rd FLOOR SHEET 174: MAIN PLAN - 174th FLOOR SHEET 175: MAIN PLAN - 175th FLOOR SHEET 176: MAIN PLAN - 176th FLOOR SHEET 177: MAIN PLAN - 177th FLOOR SHEET 178: MAIN PLAN - 178th FLOOR SHEET 179: MAIN PLAN - 179th FLOOR SHEET 180: MAIN PLAN - 180th FLOOR SHEET 181: MAIN PLAN - 181st FLOOR SHEET 182: MAIN PLAN - 182nd FLOOR SHEET 183: MAIN PLAN - 183rd FLOOR SHEET 184: MAIN PLAN - 184th FLOOR SHEET 185: MAIN PLAN - 185th FLOOR SHEET 186: MAIN PLAN - 186th FLOOR SHEET 187: MAIN PLAN - 187th FLOOR SHEET 188: MAIN PLAN - 188th FLOOR SHEET 189: MAIN PLAN - 189th FLOOR SHEET 190: MAIN PLAN - 190th FLOOR SHEET 191: MAIN PLAN - 191st FLOOR SHEET 192: MAIN PLAN - 192nd FLOOR SHEET 193: MAIN PLAN - 193rd FLOOR SHEET 194: MAIN PLAN - 194th FLOOR SHEET 195: MAIN PLAN - 195th FLOOR SHEET 196: MAIN PLAN - 196th FLOOR SHEET 197: MAIN PLAN - 197th FLOOR SHEET 198: MAIN PLAN - 198th FLOOR SHEET 199: MAIN PLAN - 199th FLOOR SHEET 200: MAIN PLAN - 200th FLOOR SHEET 201: MAIN PLAN - 201st FLOOR SHEET 202: MAIN PLAN - 202nd FLOOR SHEET 203: MAIN PLAN - 203rd FLOOR SHEET 204: MAIN PLAN - 204th FLOOR SHEET 205: MAIN PLAN - 205th FLOOR SHEET 206: MAIN PLAN - 206th FLOOR SHEET 207: MAIN PLAN - 207th FLOOR SHEET 208: MAIN PLAN - 208th FLOOR SHEET 209: MAIN PLAN - 209th FLOOR SHEET 210: MAIN PLAN - 210th FLOOR SHEET 211: MAIN PLAN - 211st FLOOR SHEET 212: MAIN PLAN - 212nd FLOOR SHEET 213: MAIN PLAN - 213rd FLOOR SHEET 214: MAIN PLAN - 214th FLOOR SHEET 215: MAIN PLAN - 215th FLOOR SHEET 216: MAIN PLAN - 216th FLOOR SHEET 217: MAIN PLAN - 217th FLOOR SHEET 218: MAIN PLAN - 218th FLOOR SHEET 219: MAIN PLAN - 219th FLOOR SHEET 220: MAIN PLAN - 220th FLOOR SHEET 221: MAIN PLAN - 221st FLOOR SHEET 222: MAIN PLAN - 222nd FLOOR SHEET 223: MAIN PLAN - 223rd FLOOR SHEET 224: MAIN PLAN - 224th FLOOR SHEET 225: MAIN PLAN - 225th FLOOR SHEET 226: MAIN PLAN - 226th FLOOR SHEET 227: MAIN PLAN - 227th FLOOR SHEET 228: MAIN PLAN - 228th FLOOR SHEET 229: MAIN PLAN - 229th FLOOR SHEET 230: MAIN PLAN - 230th FLOOR SHEET 231: MAIN PLAN - 231st FLOOR SHEET 232: MAIN PLAN - 232nd FLOOR SHEET 233: MAIN PLAN - 233rd FLOOR SHEET 234: MAIN PLAN - 234th FLOOR SHEET 235: MAIN PLAN - 235th FLOOR SHEET 236: MAIN PLAN - 236th FLOOR SHEET 237: MAIN PLAN - 237th FLOOR SHEET 238: MAIN PLAN - 238th FLOOR SHEET 239: MAIN PLAN - 239th FLOOR SHEET 240: MAIN PLAN - 240th FLOOR SHEET 241: MAIN PLAN - 241st FLOOR SHEET 242: MAIN PLAN - 242nd FLOOR SHEET 243: MAIN PLAN - 243rd FLOOR SHEET 244: MAIN PLAN - 244th FLOOR SHEET 245: MAIN PLAN - 245th FLOOR SHEET 246: MAIN PLAN - 246th FLOOR SHEET 247: MAIN PLAN - 247th FLOOR SHEET 248: MAIN PLAN - 248th FLOOR SHEET 249: MAIN PLAN - 249th FLOOR SHEET 250: MAIN PLAN - 250th FLOOR SHEET 251: MAIN PLAN - 251st FLOOR SHEET 252: MAIN PLAN - 252nd FLOOR SHEET 253: MAIN PLAN - 253rd FLOOR SHEET 254: MAIN PLAN - 254th FLOOR SHEET 255: MAIN PLAN - 255th FLOOR SHEET 256: MAIN PLAN - 256th FLOOR SHEET 257: MAIN PLAN - 257th FLOOR SHEET 258: MAIN PLAN - 258th FLOOR SHEET 259: MAIN PLAN - 259th FLOOR SHEET 260: MAIN PLAN - 260th FLOOR SHEET 261: MAIN PLAN - 261st FLOOR SHEET 262: MAIN PLAN - 262nd FLOOR SHEET 263: MAIN PLAN - 263rd FLOOR SHEET 264: MAIN PLAN - 264th FLOOR SHEET 265: MAIN PLAN - 265th FLOOR SHEET 266: MAIN PLAN - 266th FLOOR SHEET 267: MAIN PLAN - 267th FLOOR SHEET 268: MAIN PLAN - 268th FLOOR SHEET 269: MAIN PLAN - 269th FLOOR SHEET 270: MAIN PLAN - 270th FLOOR SHEET 271: MAIN PLAN - 271st FLOOR SHEET 272: MAIN PLAN - 272nd FLOOR SHEET 273: MAIN PLAN - 273rd FLOOR SHEET 274: MAIN PLAN - 274th FLOOR SHEET 275: MAIN PLAN - 275th FLOOR SHEET 276: MAIN PLAN - 276th FLOOR SHEET 277: MAIN PLAN - 277th FLOOR SHEET 278: MAIN PLAN - 278th FLOOR SHEET 279: MAIN PLAN - 279th FLOOR SHEET 280: MAIN PLAN - 280th FLOOR SHEET 281: MAIN PLAN - 281st FLOOR SHEET 282: MAIN PLAN - 282nd FLOOR SHEET 283: MAIN PLAN - 283rd FLOOR SHEET 284: MAIN PLAN - 284th FLOOR SHEET 285: MAIN PLAN - 285th FLOOR SHEET 286: MAIN PLAN - 286th FLOOR SHEET 287: MAIN PLAN - 287th FLOOR SHEET 288: MAIN PLAN - 288th FLOOR SHEET 289: MAIN PLAN - 289th FLOOR SHEET 290: MAIN PLAN - 290th FLOOR SHEET 291: MAIN PLAN - 291st FLOOR SHEET 292: MAIN PLAN - 292nd FLOOR SHEET 293: MAIN PLAN - 293rd FLOOR SHEET 294: MAIN PLAN - 294th FLOOR SHEET 295: MAIN PLAN - 295th FLOOR SHEET 296: MAIN PLAN - 296th FLOOR SHEET 297: MAIN PLAN - 297th FLOOR SHEET 298: MAIN PLAN - 298th FLOOR SHEET 299: MAIN PLAN - 299th FLOOR SHEET 300: MAIN PLAN - 300th FLOOR SHEET 301: MAIN PLAN - 301st FLOOR SHEET 302: MAIN PLAN - 302nd FLOOR SHEET 303: MAIN PLAN - 303rd FLOOR SHEET 304: MAIN PLAN - 304th FLOOR SHEET 305: MAIN PLAN - 305th FLOOR SHEET 306: MAIN PLAN - 306th FLOOR SHEET 307: MAIN PLAN - 307th FLOOR SHEET 308: MAIN PLAN - 308th FLOOR SHEET 309: MAIN PLAN - 309th FLOOR SHEET 310: MAIN PLAN - 310th FLOOR SHEET 311: MAIN PLAN - 311st FLOOR SHEET 312: MAIN PLAN - 312nd FLOOR SHEET 313: MAIN PLAN - 313rd FLOOR SHEET 314: MAIN PLAN - 314th FLOOR SHEET 315: MAIN PLAN - 315th FLOOR SHEET 316: MAIN PLAN - 316th FLOOR SHEET 317: MAIN PLAN - 317th FLOOR SHEET 318: MAIN PLAN - 318th FLOOR SHEET 319: MAIN PLAN - 319th FLOOR SHEET 320: MAIN PLAN - 320th FLOOR SHEET 321: MAIN PLAN - 321st FLOOR SHEET 322: MAIN PLAN - 322nd FLOOR SHEET 323: MAIN PLAN - 323rd FLOOR SHEET 324: MAIN PLAN - 324th FLOOR SHEET 325: MAIN PLAN - 325th FLOOR SHEET 326: MAIN PLAN - 326th FLOOR SHEET 327: MAIN PLAN - 327th FLOOR SHEET 328: MAIN PLAN - 328th FLOOR SHEET 329: MAIN PLAN - 329th FLOOR SHEET 330: MAIN PLAN - 330th FLOOR SHEET 331: MAIN PLAN - 331st FLOOR SHEET 332: MAIN PLAN - 332nd FLOOR SHEET 333: MAIN PLAN - 333rd FLOOR SHEET 334: MAIN PLAN - 334th FLOOR SHEET 335: MAIN PLAN - 335th FLOOR SHEET 336: MAIN PLAN - 336th FLOOR SHEET 337: MAIN PLAN - 337th FLOOR SHEET 338: MAIN PLAN - 338th FLOOR SHEET 339: MAIN PLAN - 339th FLOOR SHEET 340: MAIN PLAN - 340th FLOOR SHEET 341: MAIN PLAN - 341st FLOOR SHEET 342: MAIN PLAN - 342nd FLOOR SHEET 343: MAIN PLAN - 343rd FLOOR SHEET 344: MAIN PLAN - 344th FLOOR SHEET 345: MAIN PLAN - 345th FLOOR SHEET 346: MAIN PLAN - 346th FLOOR SHEET 347: MAIN PLAN - 347th FLOOR SHEET 348: MAIN PLAN - 348th FLOOR SHEET 349: MAIN PLAN - 349th FLOOR SHEET 350: MAIN PLAN - 350th FLOOR SHEET 351: MAIN PLAN - 351st FLOOR SHEET 352: MAIN PLAN - 352nd FLOOR SHEET 353: MAIN PLAN - 353rd FLOOR SHEET 354: MAIN PLAN - 354th FLOOR SHEET 355: MAIN PLAN - 355th FLOOR SHEET 356: MAIN PLAN - 356th FLOOR SHEET 357: MAIN PLAN - 357th FLOOR SHEET 358: MAIN PLAN - 358th FLOOR SHEET 359: MAIN PLAN - 359th FLOOR SHEET 360: MAIN PLAN - 360th FLOOR SHEET 361: MAIN PLAN - 361st FLOOR SHEET 362: MAIN PLAN - 362nd FLOOR SHEET 363: MAIN PLAN - 363rd FLOOR SHEET 364: MAIN PLAN - 364th FLOOR SHEET 365: MAIN PLAN - 365th FLOOR SHEET 366: MAIN PLAN - 366th FLOOR SHEET 367: MAIN PLAN - 367th FLOOR SHEET 368: MAIN PLAN - 368th FLOOR SHEET 369: MAIN PLAN - 369th FLOOR SHEET 370: MAIN PLAN - 370th FLOOR SHEET 371: MAIN PLAN - 371st FLOOR SHEET 372: MAIN PLAN - 372nd FLOOR SHEET 373: MAIN PLAN - 373rd FLOOR SHEET 374: MAIN PLAN - 374th FLOOR SHEET 375: MAIN PLAN - 375th FLOOR SHEET 376: MAIN PLAN - 376th FLOOR SHEET 377: MAIN PLAN - 377th FLOOR SHEET 378: MAIN PLAN - 378th FLOOR SHEET 379: MAIN PLAN - 379th FLOOR SHEET 380: MAIN PLAN - 380th FLOOR SHEET 381: MAIN PLAN - 381st FLOOR SHEET 382: MAIN PLAN - 382nd FLOOR SHEET 383: MAIN PLAN - 383rd FLOOR SHEET 384: MAIN PLAN - 384th FLOOR SHEET 385: MAIN PLAN - 385th FLOOR SHEET 386: MAIN PLAN - 386th FLOOR SHEET 387: MAIN PLAN - 387th FLOOR SHEET 388: MAIN PLAN - 388th FLOOR SHEET 389: MAIN PLAN - 389th FLOOR SHEET 390: MAIN PLAN - 390th FLOOR SHEET 391: MAIN PLAN - 391st FLOOR SHEET 392: MAIN PLAN - 392nd FLOOR SHEET 393: MAIN PLAN - 393rd FLOOR SHEET 394: MAIN PLAN - 394th FLOOR SHEET 395: MAIN PLAN - 395th FLOOR SHEET 396: MAIN PLAN - 396th FLOOR SHEET 397: MAIN PLAN - 397th FLOOR SHEET 398: MAIN PLAN - 398th FLOOR SHEET 399: MAIN PLAN - 399th FLOOR SHEET 400: MAIN PLAN - 400th FLOOR SHEET 401: MAIN PLAN - 401st FLOOR SHEET 402: MAIN PLAN - 402nd FLOOR SHEET 403: MAIN PLAN - 403rd FLOOR SHEET 404: MAIN PLAN - 404th FLOOR SHEET 405: MAIN PLAN - 405th FLOOR SHEET 406: MAIN PLAN - 406th FLOOR SHEET 407: MAIN PLAN - 407th FLOOR SHEET 408: MAIN PLAN - 408th FLOOR SHEET 409: MAIN PLAN - 409th FLOOR SHEET 410: MAIN PLAN - 410th FLOOR SHEET 411: MAIN PLAN - 411st FLOOR SHEET 412: MAIN PLAN - 412nd FLOOR SHEET 413: MAIN PLAN - 413rd FLOOR SHEET 414: MAIN PLAN - 414th FLOOR SHEET 415: MAIN PLAN - 415th FLOOR SHEET 416: MAIN PLAN - 416th FLOOR SHEET 417: MAIN PLAN - 417th FLOOR SHEET 418: MAIN PLAN - 418th FLOOR SHEET 419: MAIN PLAN - 419th FLOOR SHEET 420: MAIN PLAN - 420th FLOOR SHEET 421: MAIN PLAN - 421st FLOOR SHEET 422: MAIN PLAN - 422nd FLOOR SHEET 423: MAIN PLAN - 423rd FLOOR SHEET 424: MAIN PLAN - 424th FLOOR SHEET 425: MAIN PLAN - 425th FLOOR SHEET 426: MAIN PLAN - 426th FLOOR SHEET 427: MAIN PLAN - 427th FLOOR SHEET 428: MAIN PLAN - 428th FLOOR SHEET 429: MAIN PLAN - 429th FLOOR SHEET 430: MAIN PLAN - 430th FLOOR SHEET 431: MAIN PLAN - 431st FLOOR SHEET 432: MAIN PLAN - 432nd FLOOR SHEET 433: MAIN PLAN - 433rd FLOOR SHEET 434: MAIN PLAN - 434th FLOOR SHEET 435: MAIN PLAN - 435th FLOOR SHEET 436: MAIN PLAN - 436th FLOOR SHEET 437: MAIN PLAN - 437th FLOOR SHEET 438: MAIN PLAN - 438th FLOOR SHEET 439: MAIN PLAN - 439th FLOOR SHEET 440: MAIN PLAN - 440th FLOOR SHEET 441: MAIN PLAN - 441st FLOOR SHEET 442: MAIN PLAN - 442nd FLOOR SHEET 443: MAIN PLAN - 443rd FLOOR SHEET 444: MAIN PLAN - 444th FLOOR SHEET 445: MAIN PLAN - 445th FLOOR SHEET 446: MAIN PLAN - 446th FLOOR SHEET 447: MAIN PLAN - 447th FLOOR SHEET 448: MAIN PLAN - 448th FLOOR SHEET 449: MAIN PLAN - 449th FLOOR SHEET 450: MAIN PLAN - 450th FLOOR SHEET 451: MAIN PLAN - 451st FLOOR SHEET 452: MAIN PLAN - 452nd FLOOR SHEET 453: MAIN PLAN - 453rd FLOOR SHEET 454: MAIN PLAN - 454th FLOOR SHEET 455: MAIN PLAN - 455th FLOOR SHEET 456: MAIN PLAN - 456th FLOOR SHEET 457: MAIN PLAN - 457th FLOOR SHEET 458: MAIN PLAN - 458th FLOOR SHEET 459: MAIN PLAN - 459th FLOOR SHEET 460: MAIN PLAN - 460th FLOOR SHEET 461: MAIN PLAN - 461st FLOOR SHEET 462: MAIN PLAN - 462nd FLOOR SHEET 463: MAIN PLAN - 463rd FLOOR SHEET 464: MAIN PLAN - 464th FLOOR SHEET 465: MAIN PLAN - 465th FLOOR SHEET 466: MAIN PLAN - 466th FLOOR SHEET 467: MAIN PLAN - 467th FLOOR SHEET 468: MAIN PLAN - 468th FLOOR SHEET 469: MAIN PLAN - 469th FLOOR SHEET 470: MAIN PLAN - 470th FLOOR SHEET 471: MAIN PLAN - 471st FLOOR SHEET 472: MAIN PLAN - 472nd FLOOR SHEET 473: MAIN PLAN - 473rd FLOOR SHEET 474: MAIN PLAN - 474th FLOOR SHEET 475: MAIN PLAN - 475th FLOOR SHEET 476: MAIN PLAN - 476th FLOOR SHEET 477: MAIN PLAN - 477th FLOOR SHEET 478: MAIN PLAN - 478th FLOOR SHEET 479: MAIN PLAN - 479th FLOOR SHEET 480: MAIN PLAN - 480th FLOOR SHEET 481: MAIN PLAN - 481st FLOOR SHEET 482: MAIN PLAN - 482nd FLOOR SHEET 483: MAIN PLAN - 483rd FLOOR SHEET 484: MAIN PLAN - 484th FLOOR SHEET 485: MAIN PLAN - 485th FLOOR SHEET 486: MAIN PLAN - 486th FLOOR SHEET 487: MAIN PLAN - 487th FLOOR SHEET 488: MAIN PLAN - 488th FLOOR SHEET 489: MAIN PLAN - 489th FLOOR SHEET 490: MAIN PLAN - 490th FLOOR SHEET 491: MAIN PLAN - 491st FLOOR SHEET 492: MAIN PLAN - 492nd FLOOR SHEET 493: MAIN PLAN - 493rd FLOOR SHEET 494: MAIN PLAN - 494th FLOOR SHEET 495: MAIN PLAN - 495th FLOOR SHEET 496: MAIN PLAN - 496th FLOOR SHEET 497: MAIN PLAN - 497th FLOOR SHEET 498: MAIN PLAN - 498th FLOOR SHEET 499: MAIN PLAN - 499th FLOOR SHEET 500: MAIN PLAN - 500th FLOOR SHEET 501: MAIN PLAN - 501st FLOOR SHEET 502: MAIN PLAN - 502nd FLOOR SHEET 503: MAIN PLAN - 503rd FLOOR SHEET 504: MAIN PLAN - 504th FLOOR SHEET 505: MAIN PLAN - 505th FLOOR SHEET 506: MAIN PLAN - 506th FLOOR SHEET 507: MAIN PLAN - 507th FLOOR SHEET 508: MAIN PLAN - 508th FLOOR SHEET 509: MAIN PLAN - 509th FLOOR SHEET 510: MAIN PLAN - 510th FLOOR SHEET 511: MAIN PLAN - 511st FLOOR SHEET 512: MAIN PLAN - 512nd FLOOR SHEET 513: MAIN PLAN - 513rd FLOOR SHEET 514: MAIN PLAN - 514th FLOOR SHEET 515: MAIN PLAN - 515th FLOOR SHEET 516: MAIN PLAN - 516th FLOOR SHEET 517: MAIN PLAN - 517th FLOOR SHEET 518: MAIN PLAN - 518th FLOOR SHEET 519: MAIN PLAN - 519th FLOOR SHEET 520: MAIN PLAN - 520th FLOOR SHEET 521: MAIN PLAN - 521st FLOOR SHEET 522: MAIN PLAN - 522nd FLOOR SHEET 523: MAIN PLAN - 523rd FLOOR SHEET 524: MAIN PLAN - 524th FLOOR SHEET 525: MAIN PLAN - 525th FLOOR SHEET 526: MAIN PLAN - 526th FLOOR SHEET 527: MAIN PLAN - 527th FLOOR SHEET 528: MAIN PLAN - 528th FLOOR SHEET 529: MAIN PLAN - 529th FLOOR SHEET 530: MAIN PLAN - 530th FLOOR SHEET 531: MAIN PLAN - 531st FLOOR SHEET 532: MAIN PLAN - 532nd FLOOR SHEET 533: MAIN PLAN - 533rd FLOOR SHEET 534: MAIN PLAN - 534th FLOOR SHEET 535: MAIN PLAN - 535th FLOOR SHEET 536: MAIN PLAN - 536th FLOOR SHEET 537: MAIN PLAN - 537th FLOOR SHEET 538: MAIN PLAN - 538th FLOOR SHEET 539: MAIN PLAN - 539th FLOOR SHEET 540: MAIN PLAN - 540th FLOOR SHEET 541: MAIN PLAN - 541st FLOOR SHEET 542: MAIN PLAN - 542nd FLOOR SHEET 543: MAIN PLAN - 543rd FLOOR SHEET 544: MAIN PLAN - 544th FLOOR SHEET 545: MAIN PLAN - 545th FLOOR SHEET 546: MAIN PLAN - 546th FLOOR SHEET 547: MAIN PLAN - 547th FLOOR SHEET 548: MAIN PLAN - 548th FLOOR SHEET 549: MAIN PLAN - 549th FLOOR SHEET 550: MAIN PLAN - 550th FLOOR SHEET 551: MAIN PLAN - 551st FLOOR SHEET 552: MAIN PLAN - 552nd FLOOR SHEET 553: MAIN PLAN - 553rd FLOOR SHEET 554: MAIN PLAN - 554th FLOOR SHEET 555: MAIN PLAN - 555th FLOOR SHEET 556: MAIN PLAN - 556th FLOOR SHEET 557: MAIN PLAN - 557th FLOOR SHEET 558: MAIN PLAN - 558th FLOOR SHEET 559: MAIN PLAN - 559th FLOOR SHEET 560: MAIN PLAN - 560th FLOOR SHEET 561: MAIN PLAN - 561st FLOOR SHEET 562: MAIN PLAN - 562nd FLOOR SHEET 563: MAIN PLAN - 563rd FLOOR SHEET 564: MAIN PLAN - 564th FLOOR SHEET 565: MAIN PLAN - 565th FLOOR SHEET 566: MAIN PLAN - 566th FLOOR SHEET 567: MAIN PLAN - 567th FLOOR SHEET 568: MAIN PLAN - 568th FLOOR SHEET 569: MAIN PLAN - 569th FLOOR SHEET 570: MAIN PLAN - 570th FLOOR SHEET 571: MAIN PLAN - 571st FLOOR SHEET 572: MAIN PLAN - 572nd FLOOR SHEET 573: MAIN PLAN - 573rd FLOOR SHEET 574: MAIN PLAN - 574th FLOOR SHEET 575: MAIN PLAN - 575th FLOOR SHEET 576: MAIN PLAN - 576th FLOOR SHEET 577: MAIN PLAN - 577th FLOOR SHEET 578: MAIN PLAN - 578th FLOOR SHEET 579: MAIN PLAN - 579th FLOOR SHEET 580: MAIN PLAN - 580th FLOOR SHEET 581: MAIN PLAN - 581st FLOOR SHEET 582: MAIN PLAN - 582nd FLOOR SHEET 583: MAIN PLAN - 583rd FLOOR SHEET 584: MAIN PLAN - 584th FLOOR SHEET 585: MAIN PLAN - 585th FLOOR SHEET 586: MAIN PLAN - 586th FLOOR SHEET 587: MAIN PLAN - 587th FLOOR SHEET 588: MAIN PLAN - 588th FLOOR SHEET 589: MAIN PLAN - 589th FLOOR SHEET 590: MAIN PLAN - 590th FLOOR SHEET 591: MAIN PLAN - 591st FLOOR SHEET 592: MAIN PLAN - 592nd FLOOR SHEET 593: MAIN PLAN - 593rd FLOOR SHEET 594: MAIN PLAN - 594th FLOOR SHEET 595: MAIN PLAN - 595th FLOOR SHEET 596: MAIN PLAN - 596th FLOOR SHEET 597: MAIN PLAN - 597th FLOOR SHEET 598: MAIN PLAN - 598th FLOOR SHEET 599: MAIN PLAN - 599th FLOOR SHEET 600: MAIN PLAN - 600th FLOOR SHEET 601: MAIN PLAN - 601st FLOOR SHEET 602: MAIN PLAN - 602nd FLOOR SHEET 603: MAIN PLAN - 603rd FLOOR SHEET 604: MAIN PLAN - 604th FLOOR SHEET 605: MAIN PLAN - 605th FLOOR SHEET 606: MAIN PLAN - 606th FLOOR SHEET 607: MAIN PLAN - 607th FLOOR SHEET 608: MAIN PLAN - 608th FLOOR SHEET 609: MAIN PLAN - 609th FLOOR SHEET 610: MAIN PLAN - 610th FLOOR SHEET 611: MAIN PLAN - 611st FLOOR SHEET 612: MAIN PLAN - 612nd FLOOR SHEET 613: MAIN PLAN - 613rd FLOOR SHEET 614: MAIN PLAN - 614th FLOOR SHEET 615: MAIN PLAN - 615th FLOOR SHEET 616: MAIN PLAN - 616th FLOOR SHEET 617: MAIN PLAN - 617th FLOOR SHEET 618: MAIN PLAN - 618th FLOOR SHEET 619: MAIN PLAN - 619th FLOOR SHEET 620: MAIN PLAN - 620th FLOOR SHEET 621: MAIN PLAN - 621st FLOOR SHEET 622: MAIN PLAN - 622nd FLOOR SHEET 623: MAIN PLAN - 623rd FLOOR SHEET 624: MAIN PLAN - 624th FLOOR SHEET 625: MAIN PLAN - 625th FLOOR SHEET 626: MAIN PLAN - 626th FLOOR SHEET 627: MAIN PLAN - 627th FLOOR SHEET 628: MAIN PLAN - 628th FLOOR SHEET 629: MAIN PLAN - 629th FLOOR SHEET 630: MAIN PLAN - 630th FLOOR SHEET 631: MAIN PLAN - 631st FLOOR									



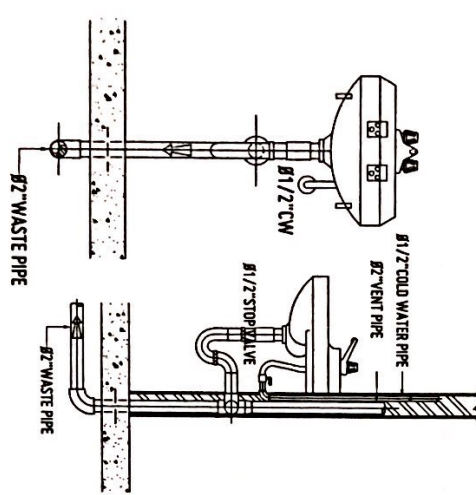
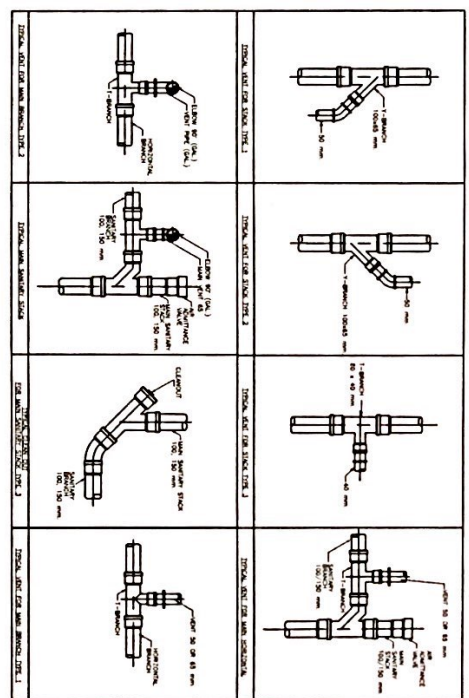
GENERAL NOTES:

1. ALL DIMENSIONS SHALL BE IN MILLIMETERS UNLESS OTHERWISE SPECIFIED.
2. ALL DIMENSIONS SHALL BE TO FACE UNLESS OTHERWISE SPECIFIED.
3. ALL DIMENSIONS SHALL BE TO CENTER UNLESS OTHERWISE SPECIFIED.
4. ALL DIMENSIONS SHALL BE TO THE OUTSIDE UNLESS OTHERWISE SPECIFIED.
5. ALL DIMENSIONS SHALL BE TO THE INSIDE UNLESS OTHERWISE SPECIFIED.
6. ALL DIMENSIONS SHALL BE TO THE CENTERLINE UNLESS OTHERWISE SPECIFIED.
7. ALL DIMENSIONS SHALL BE TO THE CENTERLINE UNLESS OTHERWISE SPECIFIED.
8. ALL DIMENSIONS SHALL BE TO THE CENTERLINE UNLESS OTHERWISE SPECIFIED.
9. ALL DIMENSIONS SHALL BE TO THE CENTERLINE UNLESS OTHERWISE SPECIFIED.
10. ALL DIMENSIONS SHALL BE TO THE CENTERLINE UNLESS OTHERWISE SPECIFIED.

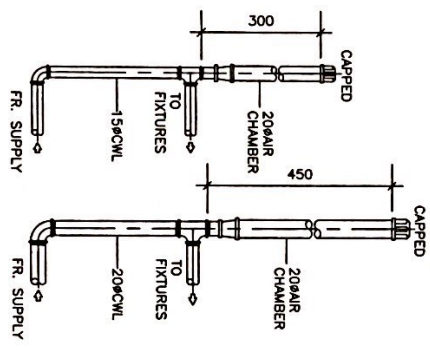


FLOOR CLEANOUT

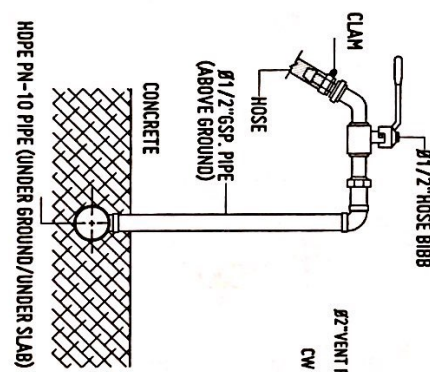
PIPE CONNECTION DETAILS
NOT DRAWN TO SCALE



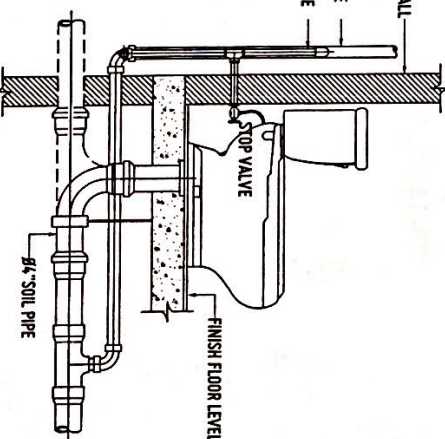
LAVATORY DETAIL
NOT DRAWN TO SCALE



AIR CHAMBER DETAIL
NOT DRAWN TO SCALE



HOSE BIBB DETAIL
NOT DRAWN TO SCALE



WATER CLOSET DETAIL
NOT DRAWN TO SCALE

1. ALL DIMENSIONS SHALL BE IN MILLIMETERS UNLESS OTHERWISE SPECIFIED.
2. ALL DIMENSIONS SHALL BE TO FACE UNLESS OTHERWISE SPECIFIED.
3. ALL DIMENSIONS SHALL BE TO CENTER UNLESS OTHERWISE SPECIFIED.
4. ALL DIMENSIONS SHALL BE TO THE OUTSIDE UNLESS OTHERWISE SPECIFIED.
5. ALL DIMENSIONS SHALL BE TO THE INSIDE UNLESS OTHERWISE SPECIFIED.
6. ALL DIMENSIONS SHALL BE TO THE CENTERLINE UNLESS OTHERWISE SPECIFIED.
7. ALL DIMENSIONS SHALL BE TO THE CENTERLINE UNLESS OTHERWISE SPECIFIED.
8. ALL DIMENSIONS SHALL BE TO THE CENTERLINE UNLESS OTHERWISE SPECIFIED.
9. ALL DIMENSIONS SHALL BE TO THE CENTERLINE UNLESS OTHERWISE SPECIFIED.
10. ALL DIMENSIONS SHALL BE TO THE CENTERLINE UNLESS OTHERWISE SPECIFIED.

USTIP

OFFICE OF THE BUILDING OFFICIAL
REPUBLIC OF THE PHILIPPINES

PROJECT: PROPOSED 5 STOREY 21ST CENTURY CLASSROOM BUILDING (PHASE 1)
LOCATION: UNIVERSITY OF SCIENCE AND TECHNOLOGY OF SOUTHERN PHILIPPINES
OWNER: UNIVERSITY OF SCIENCE AND TECHNOLOGY OF SOUTHERN PHILIPPINES

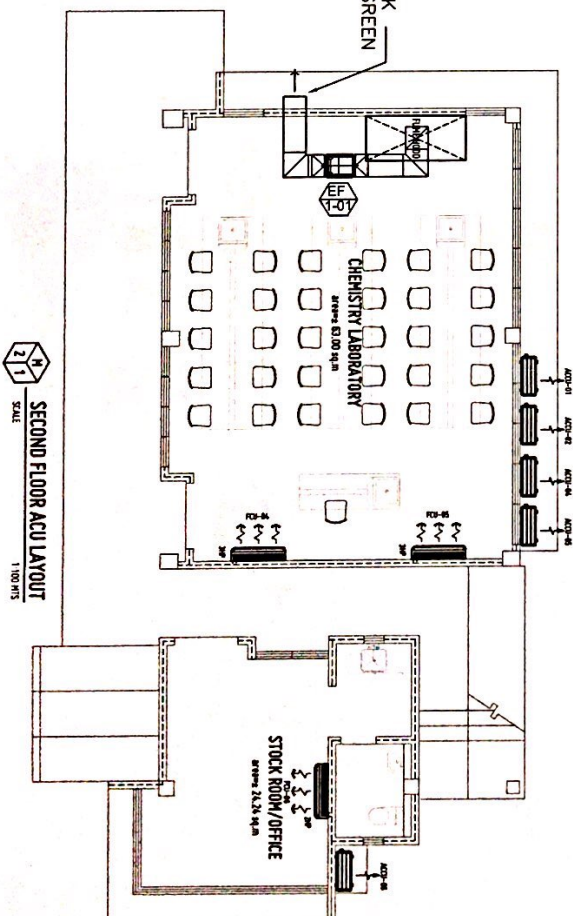
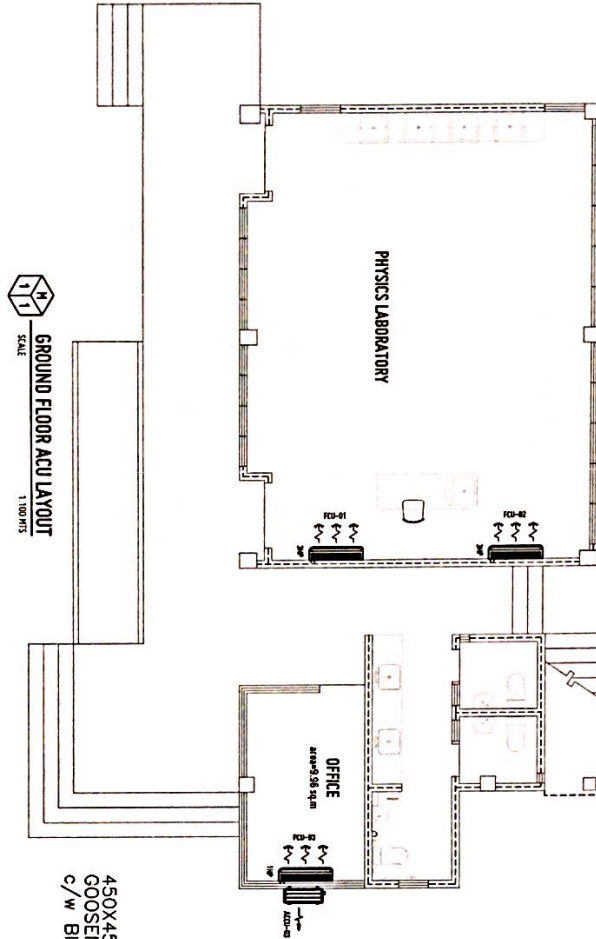
DESIGNED BY: AR. FERNANDO A. DUHAP
CHECKED BY: AR. FERNANDO A. DUHAP
APPROVED BY: DR. AMRANSAH C. CANTARA II

DATE: 10/20/2023
SCALE: 1/4" = 1'-0"

P6

EQUIPMENT SCHEDULE SPLIT-TYPE UNIT AIR CONDITIONING SCHEDULE IT BUILDING

MARK NO.	QTY.	TYPE	LOCATION	CAPACITY HP/TR	SUPPLY FAN				OPERATING TEMPERATURE				COMPRESSOR DATA				REFRIGERANT DATA	
					US	WATS	E.A.T.	EVAPORATING	CONDENSING	REF. 1	REF. 2	REF. 3	REF. 4	REF. 5	REF. 6	REF. 7	REF. 8	REF. 9
ACU 1	1	WALL MOUNTED SPLIT-TYPE	6F - PHYSICS LABORATORY	3 HP	VAR	VAR	44.4	44.4	48.8	120	2.26	230	1	60	RA10 OR APPROVE EQUAL			
ACU 2	1	WALL MOUNTED SPLIT-TYPE	6F - PHYSICS LABORATORY	3 HP	VAR	VAR	44.4	44.4	48.8	120	2.26	230	1	60	RA10 OR APPROVE EQUAL			
ACU 3	1	WALL MOUNTED SPLIT-TYPE	6F - OFFICE	1 HP	VAR	VAR	44.4	44.4	48.8	120	1	230	1	60	RA10 OR APPROVE EQUAL			
ACU 4	1	WALL MOUNTED SPLIT-TYPE	2F - CHEMISTRY LABORATORY	3 HP	VAR	VAR	44.4	44.4	48.8	120	2.26	230	1	60	RA10 OR APPROVE EQUAL			
ACU 5	1	WALL MOUNTED SPLIT-TYPE	2F - STOCK ROOM / OFFICE	2 HP	VAR	VAR	44.4	44.4	48.8	120	2	230	1	60	RA10 OR APPROVE EQUAL			



UNIVERSITY OF THE STATE OF THE PHILIPPINES
OFFICE OF THE BUILDING OFFICIAL

PROJECT: PROPOSED 5 STOREY 21ST CENTURY CLASSROOM BUILDING (PHASE 1)

LOCATION: UNIVERSITY OF THE STATE OF THE PHILIPPINES

DESIGNER: DR. ANTONIO A. BORDADO, JR.

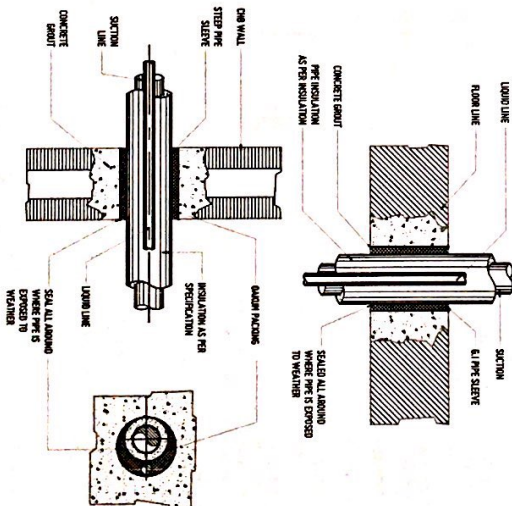
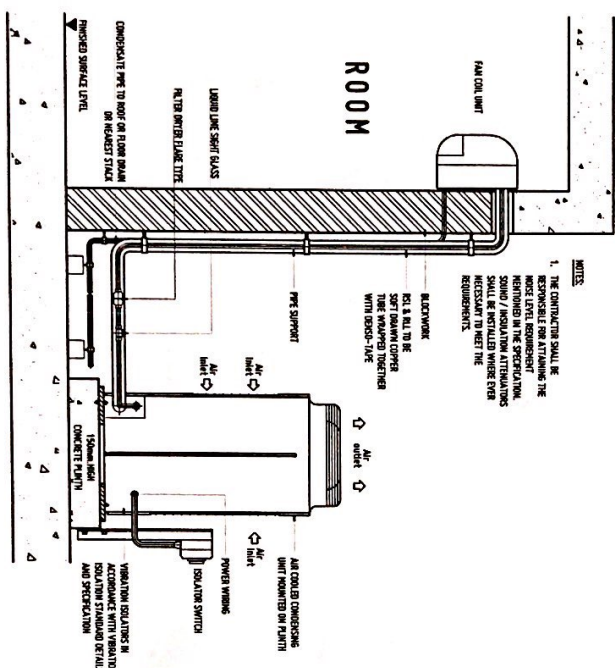
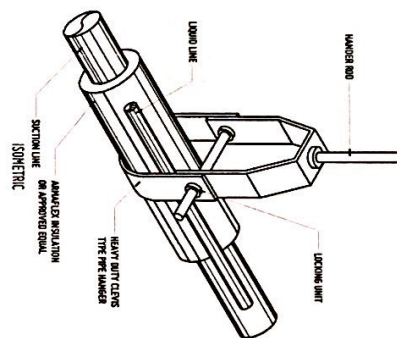
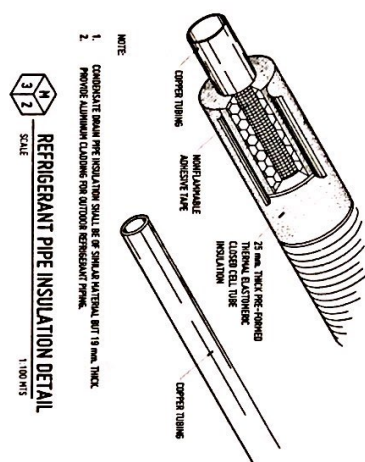
DATE: 07.20.22

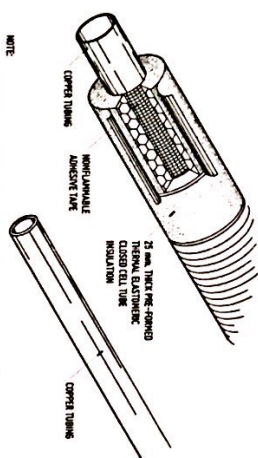
SCALE: 1:100 MTS

APPROVED BY: DR. ANTONIO A. BORDADO, JR.

DATE: 07.20.22

SCALE: 1:100 MTS

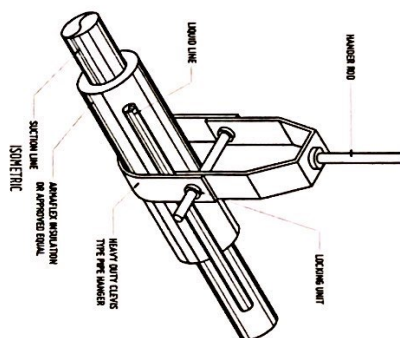




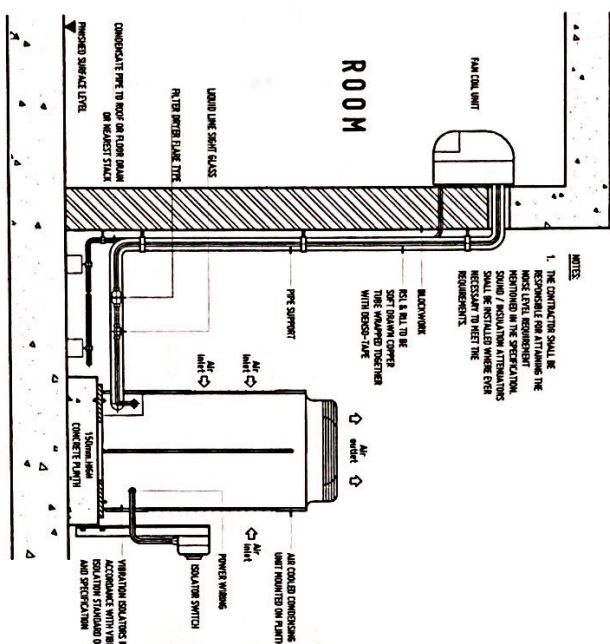
1. CONDENSATE DRAIN PIPE INSULATION SHALL BE OF SOLID MATERIAL BUT 19 MM. THICK
2. PROVIDE ALUMINUM CLADDING FOR OUTDOOR REFRIGERANT PIPING.

REFRIGERANT PIPE INSULATION DETAIL

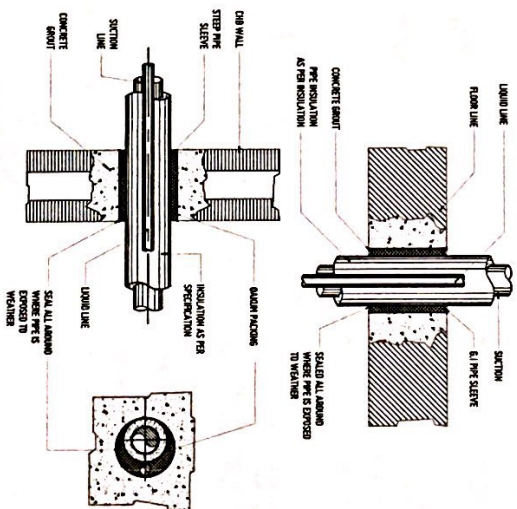
SCALE 1/100 MTS



REFRIGERANT PIPE HANGER DETAIL
NOT TO SCALE



TYPICAL SPLIT-TYPE CONNECTION DETAIL



REFRIGERANT PIPE THRU WALL DETAIL
NOT TO SCALE

OFFICE OF THE PROVINCIAL COMMISSIONER OF EDUCATION AND SPORTS, 401 UNIVERSITY BUILDINGS (CAMPUS IN NEW PHASE) BIRMINGHAM, BIRMINGHAM AND LONDON UNIVERSITY AND LONDON 15, 16, 17, 18, 19, 20, 21, 22, 23, 24, 25, 26, 27, 28, 29, 30, 31, 32, 33, 34, 35, 36, 37, 38, 39, 40, 41, 42, 43, 44, 45, 46, 47, 48, 49, 50, 51, 52, 53, 54, 55, 56, 57, 58, 59, 60, 61, 62, 63, 64, 65, 66, 67, 68, 69, 70, 71, 72, 73, 74, 75, 76, 77, 78, 79, 80, 81, 82, 83, 84, 85, 86, 87, 88, 89, 90, 91, 92, 93, 94, 95, 96, 97, 98, 99, 100, 101, 102, 103, 104, 105, 106, 107, 108, 109, 110, 111, 112, 113, 114, 115, 116, 117, 118, 119, 120, 121, 122, 123, 124, 125, 126, 127, 128, 129, 130, 131, 132, 133, 134, 135, 136, 137, 138, 139, 140, 141, 142, 143, 144, 145, 146, 147, 148, 149, 150, 151, 152, 153, 154, 155, 156, 157, 158, 159, 160, 161, 162, 163, 164, 165, 166, 167, 168, 169, 170, 171, 172, 173, 174, 175, 176, 177, 178, 179, 180, 181, 182, 183, 184, 185, 186, 187, 188, 189, 190, 191, 192, 193, 194, 195, 196, 197, 198, 199, 200, 201, 202, 203, 204, 205, 206, 207, 208, 209, 210, 211, 212, 213, 214, 215, 216, 217, 218, 219, 220, 221, 222, 223, 224, 225, 226, 227, 228, 229, 230, 231, 232, 233, 234, 235, 236, 237, 238, 239, 240, 241, 242, 243, 244, 245, 246, 247, 248, 249, 250, 251, 252, 253, 254, 255, 256, 257, 258, 259, 260, 261, 262, 263, 264, 265, 266, 267, 268, 269, 270, 271, 272, 273, 274, 275, 276, 277, 278, 279, 280, 281, 282, 283, 284, 285, 286, 287, 288, 289, 290, 291, 292, 293, 294, 295, 296, 297, 298, 299, 300, 301, 302, 303, 304, 305, 306, 307, 308, 309, 310, 311, 312, 313, 314, 315, 316, 317, 318, 319, 320, 321, 322, 323, 324, 325, 326, 327, 328, 329, 330, 331, 332, 333, 334, 335, 336, 337, 338, 339, 340, 341, 342, 343, 344, 345, 346, 347, 348, 349, 350, 351, 352, 353, 354, 355, 356, 357, 358, 359, 360, 361, 362, 363, 364, 365, 366, 367, 368, 369, 370, 371, 372, 373, 374, 375, 376, 377, 378, 379, 380, 381, 382, 383, 384, 385, 386, 387, 388, 389, 390, 391, 392, 393, 394, 395, 396, 397, 398, 399, 400, 401, 402, 403, 404, 405, 406, 407, 408, 409, 410, 411, 412, 413, 414, 415, 416, 417, 418, 419, 420, 421, 422, 423, 424, 425, 426, 427, 428, 429, 430, 431, 432, 433, 434, 435, 436, 437, 438, 439, 440, 441, 442, 443, 444, 445, 446, 447, 448, 449, 450, 451, 452, 453, 454, 455, 456, 457, 458, 459, 460, 461, 462, 463, 464, 465, 466, 467, 468, 469, 470, 471, 472, 473, 474, 475, 476, 477, 478, 479, 480, 481, 482, 483, 484, 485, 486, 487, 488, 489, 490, 491, 492, 493, 494, 495, 496, 497, 498, 499, 500, 501, 502, 503, 504, 505, 506, 507, 508, 509, 510, 511, 512, 513, 514, 515, 516, 517, 518, 519, 520, 521, 522, 523, 524, 525, 526, 527, 528, 529, 530, 531, 532, 533, 534, 535, 536, 537, 538, 539, 540, 541, 542, 543, 544, 545, 546, 547, 548, 549, 550, 551, 552, 553, 554, 555, 556, 557, 558, 559, 560, 561, 562, 563, 564, 565, 566, 567, 568, 569, 570, 571, 572, 573, 574, 575, 576, 577, 578, 579, 580, 581, 582, 583, 584, 585, 586, 587, 588, 589, 590, 591, 592, 593, 594, 595, 596, 597, 598, 599, 600, 601, 602, 603, 604, 605, 606, 607, 608, 609, 610, 611, 612, 613, 614, 615, 616, 617, 618, 619, 620, 621, 622, 623, 624, 625, 626, 627, 628, 629, 630, 631, 632, 633, 634, 635, 636, 637, 638, 639, 640, 641, 642, 643, 644, 645, 646, 647, 648, 649, 650, 651, 652, 653, 654, 655, 656, 657, 658, 659, 660, 661, 662, 663, 664, 665, 666, 667, 668, 669, 670, 671, 672, 673, 674, 675, 676, 677, 678, 679, 680, 681, 682, 683, 684, 685, 686, 687, 688, 689, 690, 691, 692, 693, 694, 695, 696, 697, 698, 699, 700, 701, 702, 703, 704, 705, 706, 707, 708, 709, 710, 711, 712, 713, 714, 715, 716, 717, 718, 719, 720, 721, 722, 723, 724, 725, 726, 727, 728, 729, 730, 731, 732, 733, 734, 735, 736, 737, 738, 739, 740, 741, 742, 743, 744, 745, 746, 747, 748, 749, 750, 751, 752, 753, 754, 755, 756, 757, 758, 759, 760, 761, 762, 763, 764, 765, 766, 767, 768, 769, 770, 771, 772, 773, 774, 775, 776, 777, 778, 779, 780, 781, 782, 783, 784, 785, 786, 787, 788, 789, 790, 791, 792, 793, 794, 795, 796, 797, 798, 799, 800, 801, 802, 803, 804, 805, 806, 807, 808, 809, 810, 811, 812, 813, 814, 815, 816, 817, 818, 819, 820, 821, 822, 823, 824, 825, 826, 827, 828, 829, 830, 831, 832, 833,	
--	--

1. SYMBOL

CCTV CLOSED CIRCUIT TELEVISION, DOME TYPE

PROVIDE SIGNAL CABLE & POWER CABLE FOR EACH CAMERA. WIRING IS SUBJECT TO MANUFACTURER'S STANDARD.

CCTV CLOSED CIRCUIT TELEVISION, REVOLVING 360°

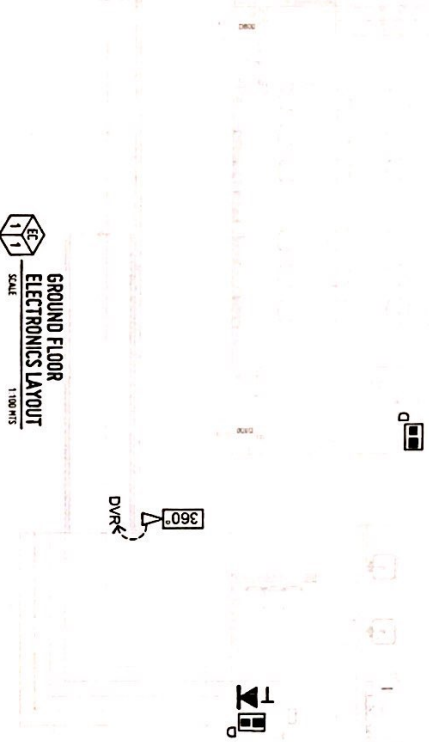
CCTV CCTV WIRING MULTIDOME WITH POWER SUPPLY

DVR DIGITAL VIDEO RECORDER

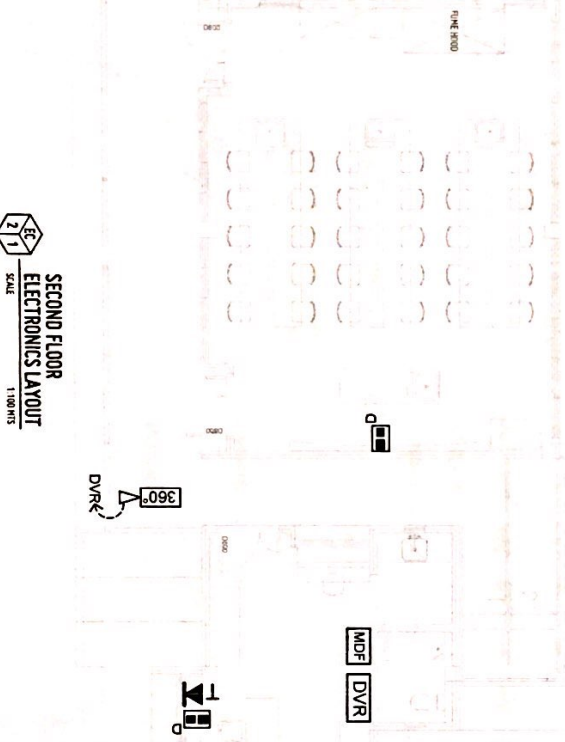
- MINIMUM CONDUIT SHALL BE 20MM (3/4") USE PVC FOR ALL EXPOSED CONDUIT OR INSIDE DRYWALL AND PVC FOR ALL CONCEALED EMBEDDED CONDUIT.
- VERIFY EXACT NUMBER OF CCTV CAMERA WITH LAYOUT.
- VERIFY AND/OR COORDINATE WITH POWER/USER THE EXACT LOCATION OF THE POINT TO LAYOUT OF CONDUIT.
- BOND ALL CABLE THAT USING 5-SHIFT GROUND WIRE AND BOND TO THE GROUND.
- CCTV SYSTEM AND WIRING SCHEDULE.

C	CONDUIT SIZE (MM ² / INCH ²)	
	HE/VAL	JPVC
1	20	25 (3/4)
2	20	25 (3/4)
4	25	32 (1)
8	32	40 (1-1/4)
10	40	50 (1-1/2)
15	50	63 (2)

GROUND FLOOR
ELECTRONICS LAYOUT
SCALE 1:100 MTS



SECOND FLOOR
ELECTRONICS LAYOUT
SCALE 1:100 MTS



CONDUIT SIZE		NUMBER OF TEL/DATA CABLES			
MM ² (INCH ²)	50-75	25-75	50-75	100-75	100-75
HE/VAL	4	4	1	-	-
JPVC	4	1	-	-	-
20	25 (3/4)	1	-	-	-
25	32 (1)	6	3	1	-
32	40 (1-1/4)	12	3	1	-
40	50 (1-1/2)	16	4	1	1
50	63 (2)	21	7	2	1
60	75 (2-1/2)	28	10	4	1
80	90 (3)	40	15	6	3
90	100 (3-1/2)	48	20	8	4
100	110 (4)	56	24	11	5

NOTE: CABLE SHALL HAVE 100MM HOOK SLACK INSIDE THE CABINET OR RACKBOX. USE ONLY ONE END FOR ALL WP CONDUIT BEND.

LEGEND

- 1 SINGLE TELEPHONE WALL OUTLET, B111
- 2 SINGLE TELEPHONE FLOOR MOUNTED OUTLET
- 3 SINGLE UNIVERSAL DATA WALL OUTLET, B145
- 4 DIVERSE UNIVERSAL DATA WALL OUTLET, B145
- 5 INTERMEDIATE DISTRIBUTION FRAME
- 6 MAIN DISTRIBUTION FRAME
- 7 WALL CABLE TV OUTLET, PROVIDE 1-1/2" O.D. CABLE
- 8 CABLE TV BOX
- 9 TELEPHONE AND CABLE TV BOX
- 10 PROVISION FOR NON/VIA CABLE FOR OVERHEAD PROTECTOR, VERIFY EXACT LOCATION WITH ARCHITECT.
- 11 HORN & 6A WALL OUTLET IN SINGLE PLATE, INTERCONNECT WITH OVERHEAD PROTECTOR NON/VIA WIRING PROVISION ON TV APPLIANCE HORN/ VIA CABLE VIA 6MM PVC DUCT TO LAYOUT.

GENERAL NOTE:

- ALL ELECTRONIC WORKS HERE IN SHALL BE DONE ACCORDANCE WITH THE PROVISION OF THE LATEST EDITION OF THE PHILIPPINE ELECTRONICS CODE, THE RULES AND REGULATIONS OF THE LOCAL ENGINEERING AUTHORITIES AND THE REQUIREMENTS OF THE UTILITY TELEPHONE COMPANY.
- ALL ELECTRONIC WORKS HERE IN INCLUDED SHALL BE EXECUTED BY THE PERSONS WITH ELECTRICAL EXPERIENCE UNDER THE DIRECT SUPERVISION OF A FULL TIME LICENSED ELECTRONICS ENGINEER. WORKS SHALL BE NEATLY PLACED, SECURELY FASTENED AND PROPERLY FINISHED.
- THE CONTRACTOR SHALL VERIFY AND DRENT THE ACTUAL LOCATION OF THE TAPPING POINT FOR CONNECTION TO COMMUNICATION SUPPLY.
- ALL MATERIALS SHALL BE BRAND NEW AND SHALL CONFORM WITH THE PROVISIONS OF THE UNDER WRITERS LABORATORIES INC. IN EVERY CASE WHERE SUCH A STANDARD HAS BEEN ESTABLISHED.
- ALL CONDUITS MUST BE PROTECTED AGAINST DAMAGES BY THE ENTRANCE OF THE WATER AND FOREIGN MATTERS DURING CONSTRUCTION. ALL ENDS OF CONDUITS SHALL BE PLUGGED TO EXCLUDE MOISTURE AND DUST IMMEDIATELY AFTER THE CONDUITS ARE PLACED.
- UNLESS OTHERWISE SPECIFIED, ALL ELECTRONICS WIRING INSTALLATION SHALL BE USED FOR THE MINIMUM SIZE OF CONDUIT SHALL BE 19MM.
- ALL ELECTRICAL WALL AND FLOOR PENETRATIONS SHALL BE PROVIDED WITH THE GASKET OF THE MANUFACTURER'S SPECIFICATION.
- ALL ELECTRICAL WORKS SHALL BE EVALUATED CASE NO. 16 CASE TYPE WITH THE FACTORY MANUFACTURER'S PATENTERS SHALL BE USED WHEN APPLICABLE FOR EACH PLANS OF WORKS AND SHALL BE IN ACCORDANCE WITH THE PHILIPPINE ELECTRICAL CODE REQUIREMENT. PREFERRED BRAND FOR JUNCTION, PATENTERS OR UTILITY SQUARE BOXES SHALL BE FINISHED AND/OR TWO OR APPROVED EQUAL.
- GROUNDING HEIGHTS OF DEVICES SHALL BE SUBJECT TO ARCHITECT'S APPROVAL PRIOR TO INSTALLATION.
- ALL SPEAKER WIRING SHALL BE 2-475 SQMM SHIELDED SPEAKER WIRE.
- NETWORK CABLES/ CONDUIT SHALL HAVE A MINIMUM DISTANCE OF 0.3M FROM POWER CONDUIT WHEN LAYED PARALLEL AND MUST RUN PERPENDICULAR TO THE STEEL CONDUIT WHEN CUTTING ACROSS A POWER LINE.
- THE PLANS AS DRAWN ARE BASED UPON THE ARCHITECTURAL PLANS AND THE DETAILS AND SHOWN CONDITION AS ACCURATELY AS IT IS POSSIBLE TO INDICATE THEM IN SCALE. THE PLANS ARE DIAGRAMMATIC AND DOES NOT NECESSARILY SHOW ALL FITTINGS NECESSARY TO FIT TO THE BUILDING CONDITIONS. THE LOCATIONS OF OUTLETS, APPLIANCE AND APPLIANCE SHOWN ON THE PLANS ARE APPROXIMATE. THE CONTRACTOR SHALL BE HELD RESPONSIBLE FOR THEIR PROPER LOCATION IN ORDER TO TAKE THEM INTO ACCOUNT WITH THE ELECTRICAL DETAILS AND INSTALLATION. THE ENGINEER'S REPRESENTATIVE AT THE SITE.



OFFICE OF THE BUILDING OFFICIAL
REPUBLIC OF THE PHILIPPINES
DEPARTMENT OF BUILDING AND CONSTRUCTION
DIVISION OF BUILDING STANDARDS AND CODES
DIVISION OF ELECTRICAL ENGINEERING
DIVISION OF MECHANICAL ENGINEERING
DIVISION OF CIVIL ENGINEERING
DIVISION OF ENVIRONMENTAL ENGINEERING
DIVISION OF INDUSTRIAL ENGINEERING
DIVISION OF MARINE ENGINEERING
DIVISION OF METALLURGICAL ENGINEERING
DIVISION OF MINING ENGINEERING
DIVISION OF NUCLEAR ENGINEERING
DIVISION OF PETROLEUM ENGINEERING
DIVISION OF TRANSPORTATION ENGINEERING
DIVISION OF AEROSPACE ENGINEERING
DIVISION OF AGRICULTURAL ENGINEERING
DIVISION OF FOOD ENGINEERING
DIVISION OF TEXTILE ENGINEERING
DIVISION OF LEATHER ENGINEERING
DIVISION OF PAPER ENGINEERING
DIVISION OF CHEMICAL ENGINEERING
DIVISION OF ENVIRONMENTAL ENGINEERING
DIVISION OF INDUSTRIAL ENGINEERING
DIVISION OF MARINE ENGINEERING
DIVISION OF METALLURGICAL ENGINEERING
DIVISION OF MINING ENGINEERING
DIVISION OF NUCLEAR ENGINEERING
DIVISION OF PETROLEUM ENGINEERING
DIVISION OF TRANSPORTATION ENGINEERING
DIVISION OF AEROSPACE ENGINEERING
DIVISION OF AGRICULTURAL ENGINEERING
DIVISION OF FOOD ENGINEERING
DIVISION OF TEXTILE ENGINEERING
DIVISION OF LEATHER ENGINEERING
DIVISION OF PAPER ENGINEERING
DIVISION OF CHEMICAL ENGINEERING

PROJECT: PROPOSED 5 STOREY 21ST CENTURY CLASSROOM BUILDING (PHASE 1)
LOCATION: UNIVERSITY OF SCIENCE AND TECHNOLOGY OF SOUTHERN PHILIPPINES
DESIGNER: AIR PERINANTIN, DORNA
DATE: 2022
SCALE: 1:100 MTS

APPROVED BY: DR. ANDREW B. CULTURA II
PROJECT ENGINEER

DESIGNING ARCHITECT: DR. ANDREW B. CULTURA II
PROJECT ENGINEER

DESIGNING ARCHITECT: DR. ANDREW B. CULTURA II
PROJECT ENGINEER

DESIGNING ARCHITECT: DR. ANDREW B. CULTURA II
PROJECT ENGINEER

DESIGNING ARCHITECT: DR. ANDREW B. CULTURA II
PROJECT ENGINEER

DESIGNING ARCHITECT: DR. ANDREW B. CULTURA II
PROJECT ENGINEER

DESIGNING ARCHITECT: DR. ANDREW B. CULTURA II
PROJECT ENGINEER

PLAN



NOTES:

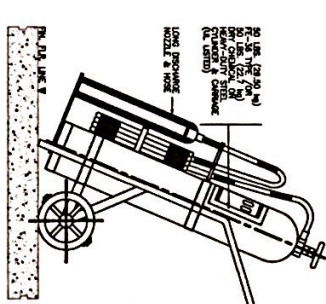
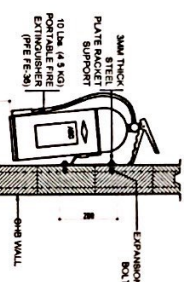
1. FIRE ALARM SYSTEM SHALL BE CONVENTIONAL TYPE
2. MINIMUM CONDUIT SIZE SHALL BE 20MM (3/4") I.C. USE INC. FOR ALL EXPOSED CONDUIT OR INSIDE DRY WALL AND PVC IF CONCRETE EMBEDDED.
3. ALL RISER CONDUIT SHALL BE INC. PROVIDE 50MM (2") SPACE INC. RISER CONDUIT.
4. FLS WIRING AND CONDUIT SCHEDULE.

CONDUIT SIZE MM (INCH)	NUMBER OF 17 WIRES (C.L. CABLE TYPE)	CONDUIT SIZE MM (INCH)	NUMBER OF 17 WIRES (C.L. CABLE TYPE)
METAL UPVC	#18	#16	#18
20	25/2 (A)	25	18
25	32(1)	41	30
32	40(1-1/4)	72	53
40	50(1-1/2)	99	72
50	63(2)	124	100
		128	110(4)
			627
			460

5. SYMBOLS
A = #18/2 AWG. CONDUIT INTERFERENCE (C) CABLE TYPE, UL LISTED BRAND

- FACP** FIRE ALARM CONTROL PANEL, UL LISTED BRAND
- S** SMOKE DETECTOR - CEILING MOUNTED
- SD** SMOKE DETECTOR - WALL MOUNTED
- HD** HEAT DETECTOR, CEILING MOUNTED
- SD** FIRE ALARM STROBE AND HORN, UL LISTED BRAND
- MF** FIRE ALARM MANUAL PULL STATION, UL LISTED BRAND
- FFPB** FIRE ALARM SYSTEM WIRING PULL BOX
6. PROVIDE SUPERVISORY WIRES TO THE FOLLOWING:

- A. ELEVATORS
- B. FIRE PROTECTION FLOW SWITCH CONTROL, PANEL OR INDIVIDUAL FLOW SWITCH (VERIFY LOCATION)
- C. STAIR PRESSURIZATION BLOWERS OR FAN/ST VERIFY EXACT LOCATION
- D. SMOKE VENTILATION SYSTEM AND/OR SMOKE CONTROL SYSTEM.
- E. FIRE FIGHT CONTROL PANEL
7. PROVIDE WIRING FROM FACP TO GENERATOR CONTROL, PANEL TO MONITOR THE FOLLOWING CONDITIONS:
8. FINAL WIRING SHALL BE AS PER MANUFACTURER'S STANDARDS.

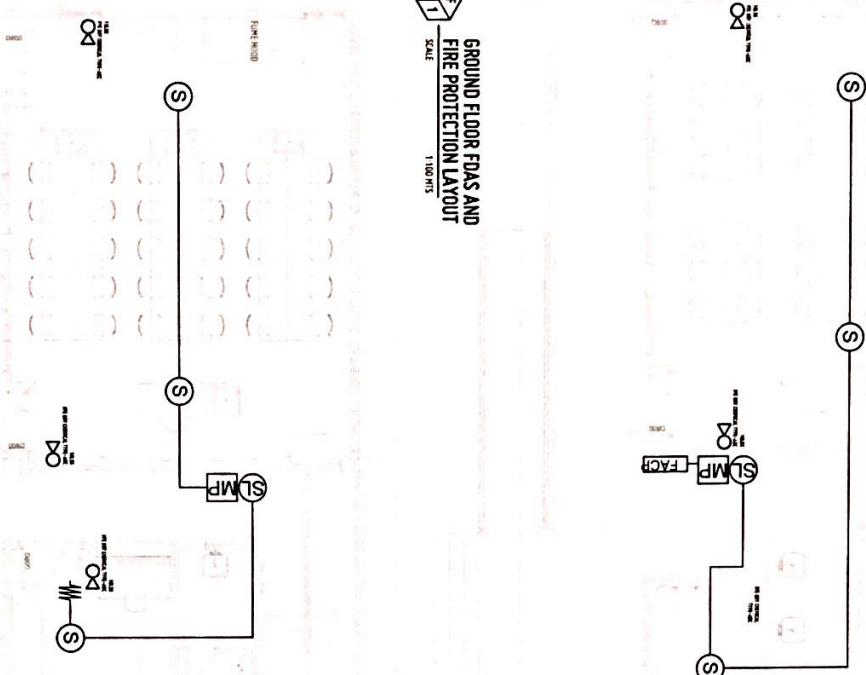


10 lbs. (4.5kg) PFE-36
PORTABLE FIRE EXTINGUISHER
NOT DRAWN TO SCALE

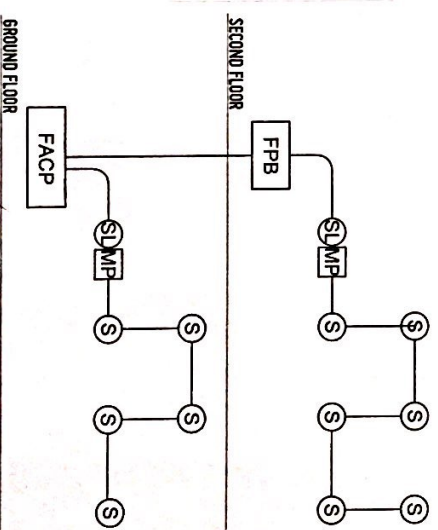
GENERAL NOTES:

1. FFL - FINISH FLOOR LINE VERIFY FLOOR FINISH/MATERIALS.
2. ALL INTERIOR PARTITIONS AND FURNITURE LAYOUT ARE INDICATIVE ONLY AND MAY CHANGE VERIFY INTERIOR DESIGN DRAWINGS.
3. ALL LANDSCAPE ARCHITECTURE ELEMENTS ARE INDICATIVE ONLY AND MAY CHANGE VERIFY LANDSCAPE ARCHITECTURE DRAWINGS.
4. DO NOT SCALE DRAWINGS. WRITTEN DIMENSIONS TO GOVERN.
5. IN CASE OF DISCREPANCY IN THE FIGURES AND DRAWINGS THE MATTER SHALL BE SUBMITTED IMMEDIATELY TO THE ARCHITECT BEFORE ADJUSTMENTS ARE TO BE MADE.
6. VERIFY ACTUAL TECHNICAL SITE CONDITIONS.
7. VERIFY ACTUAL ELEVATION MARKS AND LOT BOUNDARIES PRIOR TO COMMENCING WORK.
8. ALL WORKS HEREIN SHALL BE DONE UNDER THE STRICT SUPERVISION OF DUTY LICENSED AND EXPERIENCED ARCHITECT/ENGINEER.
9. LOT AND BUILDING BOUNDARIES SHOULD BE SUPPORTED BY RETAINING WALLS AND FENCES. VERIFY EXISTING HEIGHTS, ELEVATIONS. ANNOTATE SITE CONDITIONS.
10. THE GENERAL CONTRACTING, SUB-CONTRACTORS, INCLUDING SPECIALTY CONTRACTORS, SHALL SUBMIT PROPER SHOP DRAWINGS INCLUDING MATERIALS SAMPLE PRIOR TO INSTALLATIONS FOR ARCHITECT'S APPROVAL.

GROUND FLOOR FDAS AND
FIRE PROTECTION LAYOUT
SCALE 1:100 MTS



SECOND FLOOR FDAS AND
FIRE PROTECTION LAYOUT
SCALE 1:100 MTS



FIRE ALARM
SYSTEM RISER DIAGRAM
NOT TO SCALE

GROUND FLOOR

SECOND FLOOR

USTIP

OFFICE OF THE BUILDING OFFICIAL
REPUBLIC OF THE PHILIPPINES
OFFICE OF THE BUILDING OFFICIAL

PROJECT: PROPOSED 5 STOREY 21ST CENTURY CLASSROOM BUILDING (PHASE 1)
LOCATION: UNIVERSITY OF SCIENCE AND TECHNOLOGY OF SOUTHERN PHILIPPINES
DATE: 10/10/2020
PAGE: 10

RECOMMENDING APPROVAL: *[Signature]*
RECOMMENDING APPROVAL: *[Signature]*
APPROVED BY: *[Signature]*
DR. AMBROSIO B. CULTURA II
FIRE ALARM SYSTEM RISER DIAGRAM
SHEET NO. 10/10/2020

10/10/2020

F1