

# Section VII. Technical Specifications

## Notes for Preparing the Technical Specifications

A set of precise and clear specifications is a prerequisite for Bidders to respond realistically and competitively to the requirements of the Procuring Entity without qualifying their Bids. In the context of Competitive Bidding, the specifications (e.g. production/delivery schedule, manpower requirements, and after-sales service/parts, descriptions of the lots or items) must be prepared to permit the widest possible competition and, at the same time, present a clear statement of the required standards of workmanship, materials, and performance of the goods and services to be procured. Only if this is done will the objectives of transparency, equity, efficiency, fairness, and economy in procurement be realized, responsiveness of bids be ensured, and the subsequent task of bid evaluation and post-qualification facilitated. The specifications should require that all items, materials and accessories to be included or incorporated in the goods be new, unused, and of the most recent or current models, and that they include or incorporate all recent improvements in design and materials unless otherwise provided in the Contract.

Samples of specifications from previous similar procurements are useful in this respect. The use of metric units is encouraged. Depending on the complexity of the goods and the repetitiveness of the type of procurement, it may be advantageous to standardize the General Technical Specifications and incorporate them in a separate subsection. The General Technical Specifications should cover all classes of workmanship, materials, and equipment commonly involved in manufacturing similar goods. Deletions or addenda should then adapt the General Technical Specifications to the particular procurement.

Care must be taken in drafting specifications to ensure that they are not restrictive. In the specification of standards for equipment, materials, and workmanship, recognized Philippine and international standards should be used as much as possible. Where other particular standards are used, whether national standards or other standards, the specifications should state that equipment, materials, and workmanship that meet other authoritative standards, and which ensure at least a substantially equal quality than the standards mentioned, will also be acceptable. The following clause may be inserted in the Special Conditions of Contract or the Technical Specifications.

### Sample Clause: Equivalency of Standards and Codes

Wherever reference is made in the Technical Specifications to specific standards and codes to be met by the goods and materials to be furnished or tested, the provisions of the latest edition or revision of the relevant standards and codes shall apply, unless otherwise expressly stated in the Contract. Where such standards and codes are national or relate to a particular country or region, other authoritative standards that ensure substantial equivalence to the standards and codes specified will be acceptable.

Reference to brand name and catalogue number should be avoided as far as possible; where unavoidable they should always be followed by the words "*or at least equivalent.*" References to brand names cannot be used when the funding source is the GOP.

Where appropriate, drawings, including site plans as required, may be furnished by the Procuring Entity with the Bidding Documents. Similarly, the Supplier may be requested to provide drawings or samples either with its Bid or for prior review by the Procuring Entity during contract execution.

Bidders are also required, as part of the technical specifications, to complete their statement of compliance demonstrating how the items comply with the specification.

# Technical Specifications

| Item No.  | Specification  | Statement of Compliance   |
|---|--|---|
|   |  | <p><i>[Bidders must state here either "Comply" or "Not Comply" against each of the individual parameters of each Specification stating the corresponding performance parameter of the equipment offered. Statements of "Comply" or "Not Comply" must be supported by evidence in a Bidders Bid and cross-referenced to that evidence. Evidence shall be in the form of manufacturer's un-amended sales literature, unconditional statements of specification and compliance issued by the manufacturer, samples, independent test data etc., as appropriate. A statement that is not supported by evidence or is subsequently found to be contradicted by the evidence presented will render the Bid under evaluation liable for rejection. A statement either in the Bidder's statement of compliance or the supporting evidence that is found to be false either during Bid evaluation, post-qualification or the execution of the Contract may be regarded as fraudulent and render the Bidder or supplier liable for prosecution subject to the applicable laws and issuances.]</i></p> |
| <b>LOT 1 - MATERIALS FOR SCHOOL UNIFORM (P5,381,540.00)</b> |  |   |
| 1   | Buttons, Color: black, medium size w/ 2 holes for slacks (see attached sample)     |   |
| 2   | Electric Iron without water sprayer  |   |
| 3   | Fashion buttons, white w/ USTP Print navy blue (see attached sample)               |   |
| 4   | Geana Earth, Color: Black, W=60"   |   |
| 5   | Hook & Eye - Jumbo for Pants (see attached sample)                                 |   |
| 6   | Ordinary buttons, white with 2 holes w/ USTP Print navy blue (see attached sample) |   |

*Technical Specifications - Proposed Procurement of the Supply and Delivery of P.E. Uniform and Materials for the Production of College and Senior High School Uniform for USTP-CDO CY 2023*

*Isobe*

*4*

|   |  |  |
|---|--|--|
| 7   | Ordinary Eco Bag - Large   |  |
| 8   | Ordinary Eco Bag - Medium  |  |
| 9   | Pattern Paper (Thick)  |  |
| 10  | Peach Twill, Color: Navy Blue, First Class, W=60", (see attached sample) |  |
| 11  | Peach Twill, Color: White, First Class, W=60" (see attached sample)      |  |
| 12  | Pelon Baga #1060 (see attached sample)                                   |  |
| 13  | Pelon Pilit #1035F (see attached sample)                                 |  |
| 14  | Roughthenberg, Color: Navy Blue, W=60" (see attached sample)             |  |
| 15  | Sewing Machine Needle - No. DB14   |  |
| 16  | Sewing Machine Oil   |  |
| 17  | Tailored Chalk   |  |
| 18  | Thread, Color: White, 3000m (20 cones/box ordinary)                      |  |
| 19  | Thread, Color: Navy Blue, 3000m (20 cones/box ordinary)                  |  |
| 20  | USTP PATCHES - USTP Logo (see attached sample)                           |  |
| 21  | Transparent Water Sprayer - plastic bottle for Plantsadora, 500 ml       |  |
| 22  | Zipper 8" Invisible (Navy Blue for Slacks)                               |  |
| 23  | Zipper 8" w/ metal head (Navy Blue Heavyduty for Pants)                  |  |
| <b>LOT 2 - P.E. UNIFORM (P2,894,000.00)</b> |  |  |
| 24  | P.E. Uniform (Size #18)  |  |

*Boche*

*g*

|   |                                   |  |
|---|-----------------------------------|--|
| 25  | P.E. Uniform (Double Extra Large) |  |
| 26  | P.E. Uniform (Size #20)           |  |
| 27  | P.E. uniform (Extra Large)        |  |
| 28  | P.E. Uniform (Large)              |  |
| 29  | P.E. Uniform (Medium)             |  |
| 30  | P.E. Uniform (Small)              |  |
| NOTE:   |                                   |  |
| 1. Please see attached design and measurements (4 pages)  |                                   |  |
| 2. The bidder should submit a cloth sample for the T-shirt and for the Jogging pants in each of the following colors: golden yellow and navy-blue (full-sublimation). |                                   |  |
| <b>***** Nothing Follows*****</b>   |                                   |  |

**Additional Requirements:**

The technical specification that shall be submitted by the Bidder shall include, among others:

- a. brochures or catalogues for Item No. 2; and
- b. product samples for Items No. 1, 5, 10, 11, 12, 13, 14, 22 & 23.

# SAMPLE MATERIALS FOR SCHOOL UNIFORM



ITEM NO.1 BUTTONS, COLOR:  
BLACK, MEDIUM SIZE W/ 2  
HOLES FOR SLACKS



ITEM NO. 3 FASHION BUTTONS,  
WHITE W/ USTP PRINT NAVY BLUE



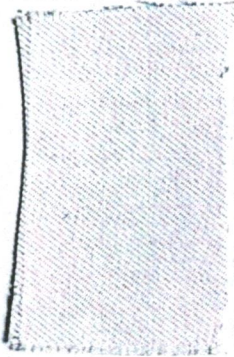
ITEM NO. 5 HOOK & EYE-  
JUMBO FOR PANTS



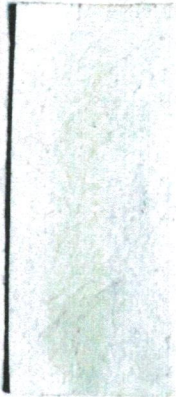
ITEM NO. 6 ORDINARY  
BUTTONS, WHITE WITH 2 HOLES



ITEM NO. 10 PEACH TWILL, COLOR:  
NAVY BLUE, FIRST CLASS, W=60"



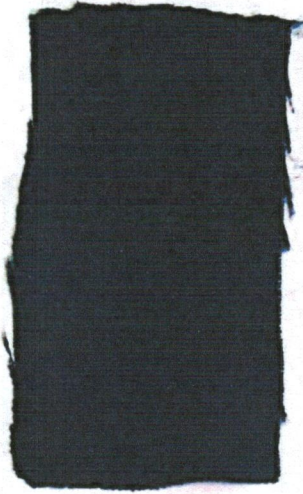
ITEM NO. 11 PEACH TWILL, COLOR:  
WHITE, FIRST CLASS, W=60"



ITEM NO. 12 PELON BAGA #1060



ITEM NO. 13 PELON PILIT # 1035F



ITEM NO. 14 ROUGH THENBERG,  
COLOR: NAVY BLUE, W=60"



ITEM NO. 20 USTP PATCHES -  
USTP LOGO

## DESIGN AND MEASUREMENTS

### T-SHIRT (for Male and Female)

| Size #18      |     | Double Extra Large |       | Size #20      |       | Extra Large   |       |
|---------------|-----|--------------------|-------|---------------|-------|---------------|-------|
| Shoulder Line | 15" | Shoulder Line      | 20"   | Shoulder Line | 15 ½" | Shoulder Line | 19"   |
| Armhole       | 14" | Armhole            | 21"   | Armhole       | 14"   | Armhole       | 19 ½" |
| Length        | 24" | Length             | 30 ½" | Length        | 24"   | Length        | 29"   |

| Large         |        | Medium        |       | Small         |       |
|---------------|--------|---------------|-------|---------------|-------|
| Shoulder Line | 18 ½ " | Shoulder Line | 17 ½" | Shoulder Line | 16 ½" |
| Armhole       | 18"    | Armhole       | 16"   | Armhole       | 15"   |
| Length        | 28"    | Length        | 26"   | Length        | 24 ½" |

### JOGGING PANTS (for Male and Female)

| Size #18   |           | Double Extra Large |           | Size #20   |           | Extra Large |           |
|------------|-----------|--------------------|-----------|------------|-----------|-------------|-----------|
| Waist Line | 20" – 21" | Waist Line         | 35" – 38" | Waist Line | 20" – 21" | Waist Line  | 31" – 34" |
| Length     | 36"       | Length             | 40"       | Length     | 36"       | Length      | 40"       |

| Large      |           | Medium     |           | Small      |           |
|------------|-----------|------------|-----------|------------|-----------|
| Waist Line | 27" – 30" | Waist Line | 24" – 26" | Waist Line | 22" – 23" |
| Length     | 38"       | Length     | 36"       | Length     | 36"       |

Prepared by:



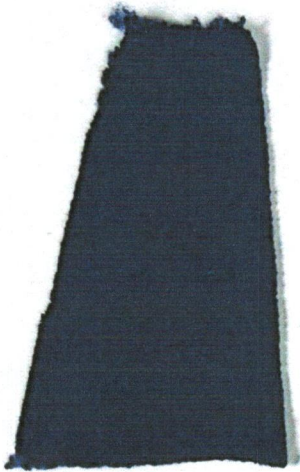
MARCELO C. PALMA  
Master Cutter

Noted by:



GINA N. LASTIMOSA  
Head, Garments Production

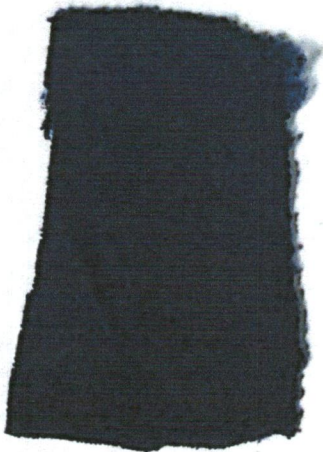
**CLOTH SAMPLE FOR P.E. UNIFORM**



**DRI-FIT SPANDEE NAVY BLUE**  
(FOR T-SHIRT)



**DRI-FIT SPANDEE GOLDEN YELLOW**  
(FOR T-SHIRT)



**UNEX NAVY BLUE**  
(FOR JOGGING PANTS)



**UNEX GOLDEN YELLOW**  
(FOR JOGGING PANTS)

Cloth: Dri Fit Spandee  
 Full Sublimation  
 Color: Golden Yellow  
 Navy BLue  
 Prints: Screen Print  
 Font: Roboto Slab



USTP: Golden Yellow  
 Letter P : Navy blue  
 Letter E : Golden Yellow  
 Logo Size : 2x2 inches  
 Print: Screen Print



USTP Logo  
 Print: Screen Print  
 Level: Arm Hole Line

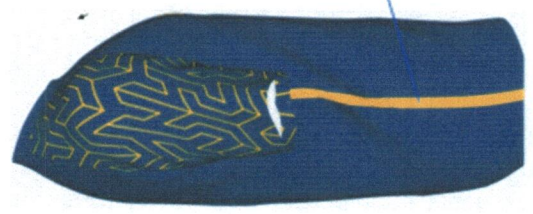


Prints : Screen Print  
 Font : Roboto Slab  
 Font Color : Golden Yellow

T-SHIRT  
 FRONT DESIGN



T-SHIRT  
 BACK DESIGN



Color: Golden Yellow  
 Size: 1 1/2 inches

T-SHIRT  
 RIGHT SIDE  
 DESIGN



Color: Golden Yellow  
 Size: 1 1/2 inches

T-SHIRT  
 LEFT SIDE  
 DESIGN



USTP LOGO  
(Heat Press)

8.5 INCHES  
FROM  
WAISTLINE

LOGO SIZE:  
3X3 INCHES

COLOR: NAVY BLUE  
CLOTH: UNEX

WAIST LINE



JOGGING PANTS  
FRONT DESIGN

POCKET (LEFT &  
RIGHT)



JOGGING PANTS  
LEFT DESIGN

COLOR: NAVY BLUE  
CLOTH: UNEX



JOGGING PANTS  
RIGHT DESIGN

Color: Golden Yellow  
Cloth: UNEX  
Size: 1 1/2 inches



USTP LOGO  
(Heat Press)

COLOR: NAVY BLUE  
CLOTH: UNEX